



Research note

**Queensland State and regional household
projections 2001-26: method and results**

Tom Wilson

February 2005

Queensland Centre for Population Research
School of Geography, Planning and Architecture
The University of Queensland

Acknowledgments

The Core funding to support the activities of the Centre is provided under a collaborative research agreement with the Queensland Government Office of Economic and Statistical Research (OESR).

Author

Tom Wilson
Research Fellow
Email: tom.wilson@uq.edu.au

Warning

The growth of household numbers cannot be forecast precisely. Readers are advised that whilst these projections are based on the best information currently available they will certainly be subject to some degree of error.

© 2005 Queensland Centre for Population Research

Queensland Centre for Population Research
School of Geography, Planning and Architecture
Chamberlain Building
The University of Queensland
St Lucia, Brisbane, Queensland 4072, Australia

<http://www.geosp.uq.edu.au/qcpr>

Contents

1. Introduction	1
2. Method	1
2.1. Calculation of historical proportions	2
2.2. Initial projection of proportions	2
2.3. Calculation of adjusted proportions for Queensland	2
2.4. Projections of people by living arrangement	3
2.5. State projections by household type	4
2.6. Regional projections by household type	6
3. Selected results	7
3.1. State	7
3.2. Regions	7
4. The next set of household projections	8
Appendix	14

List of Tables

Table 1: Living arrangement types

Table 2: Household types

Table 3: Household projections by type, Queensland, 2001-26

Table 4: Average household size by region, 2001-26

Table A: Projections by household type by region, 2001-26

Table B: Projected change by household type by region, 2001-26

List of Figures

Figure 1: The proportion of people who are parents in a couple family in Queensland, 1986-2001

Figure 2: Matrix of Queensland 2001 population by living arrangement

Figure 3: Matrix of regional populations by age and living arrangement

Figure 4: Growth in household numbers by region, 2001-26

Figure 5: Household numbers by type for South East Queensland, 2001 estimates and 2026 projections

Figure 6: Household numbers by type for Queensland outside the South East, 2001 estimates and 2026 projections

1. Introduction

This research note presents State and regional household projections for Queensland for 2001-26 and describes how they were produced. Section 2 details the method used; section 3 contains edited highlights of the projections. A brief note on future household projections is given in section 4. Whilst projection calculations were performed at the statistical division scale, results are given for statistical divisions outside South East Queensland plus South East Queensland as a whole (Brisbane and Moreton statistical divisions combined) as the population projections on which the household projections are based are more reliable for this region.

2. Method

The propensity method employed by ABS (2004a) to prepare official capital city and balance of state household projections was adapted for use at the statistical division scale in Queensland. Although the propensity method suffers from a number of conceptual limitations (as outlined in Bell *et al.* 1995) more sophisticated multistate projection methods require data not currently available in Australia. However, the propensity method has the advantage of being relatively easy to implement because of its lower data requirements and simple calculations. Use of the particular ABS version of the propensity method for this set of projections allowed for an easy data acquisition process. It was a simple matter for ABS to run the same census data extraction program written to obtain data for their set of projections but for the statistical divisions of Queensland.

In essence the ABS approach consists of taking an existing population projection disaggregated by age group, and splitting the numbers in each age group into different living arrangements. Fifteen living arrangements are distinguished; these are listed in Table 1. The existing population projections in this case were the medium series of the Queensland Government 2003 population projections, details of which are available at:

http://www.oesr.qld.gov.au/queensland_by_theme/demography/population/index.shtml.

Once the living arrangement allocation has been made the numbers of households may be computed using assumptions about the average fraction of a household represented by an individual in each living arrangement (e.g. someone living in a group household represents 0.445 of a household, a figure determined from census data; a person living alone represents 1 household). Details of the method are set out in the steps below.

2.1. Calculation of historical proportions

Data from the 1986, 1991, 1996 and 2001 Censuses were obtained to calculate the proportion of people in each age group in each living arrangement type. These proportions were calculated as:

$$\text{prop}_{r,a,l,y} = \frac{C_{r,a,l,y}}{C_{r,a,y}} \quad (1)$$

where ‘prop’ denotes proportion, ‘C’ Census population, ‘r’ region, ‘a’ five year age group, ‘l’ living arrangement and ‘y’ year. For each age group the proportions across all living arrangement types sum to 1.0. Proportions were calculated for the State and each of the statistical divisions. As an example, Figure 1 shows how the proportion of Queenslanders who were parents in a couple family changed over the period 1986-2001.

2.2. Initial projection of proportions

State and statistical division living arrangement proportions were projected to 2026 using the ABS low rate of change method. The 1986-2001 rate of change in proportions was assumed to continue over the period 2001-06, halving for 2006-11, halving again for 2011-16, with no change thereafter. For residents of non-private dwellings only the 1996 and 2001 proportions were used as the basis for projection due to different definitions in earlier censuses (ABS 2004a: 111). Although arbitrary, this low rate of change approach is better than assuming no change from 2001 proportions or linear extrapolations of the trend. Assuming 2001 proportions remain constant into the future would imply serious discontinuities in trend in many cases. The other option, linear extrapolation, is liable to give nonsensical negative projections for those living arrangements which show big declines in proportions over the 1986-2001 period. However, even using the low rate of change method produced negative projected proportions in a small number of cases (for example, people aged 80-84 living in other family types went negative by 2016). These were set to zero and the proportions re-scaled so that they summed to 1.0 across all living arrangements.

2.3. Calculation of adjusted proportions for Queensland

Ideally, multiplying proportions derived from 2001 census data by the mid-2001 ERPs would give suitable 2001 population estimates by living arrangement, i.e.

$$P_{Qld,a,l,2001} = prop_{r,a,l,2001} \times P_{Qld,a,2001} \quad (2)$$

where ‘P’ denotes the mid-year ERP. However, the figures for Queensland which result from this calculation are marginally different to those presented in the ABS household projections volume (ABS 2004a: 88). The reason for this is that ABS adjusted their 2001 living arrangement proportions to agree with independent household estimates (ABS 2004a: 115). Iterative proportional fitting was therefore used to scale these preliminary estimates by living arrangement to the marginal totals of (i) the ABS mid-2001 estimates by living arrangement for Queensland, and (ii) the mid-2001 ERP by age group. Figure 2 shows the matrix and the two sets of marginal totals (shaded cells). The totals across the bottom of the matrix are the published ABS estimates of the Queensland population by living arrangement in 2001; the totals at the right-hand side are the Queensland mid-2001 ERPs by age group. Once the matrix had been fitted, adjusted 2001 proportions were calculated. Adjusted proportions for future years were created by assuming the difference between the original and adjusted proportions in 2001 applied throughout the forecast horizon. For statistical divisions adjusted proportions were not calculated due to the lack of ABS population estimates by living arrangement at this scale.

2.4. Projections of people by living arrangement

Projections of people by living arrangement were calculated for the years 2006, 2011, 2016, 2021 and 2026. For Queensland as a whole projections were calculated simply as:

$$P_{Qld,a,l,y} = prop_{Qld,a,l,y}^* \times P_{Qld,a,y} \quad (3)$$

where ‘prop*’ denotes adjusted proportion and ‘P’ the mid-year ERP. For the statistical divisions the original proportions were used to prepare preliminary projections by living arrangement:

$$P_{r,a,l,y}^* = prop_{r,a,l,y} \times P_{r,a,y} \quad (4)$$

These preliminary projections were then scaled using iterative proportional fitting so that they were consistent with (i) State projections by age and living arrangement, and (ii) statistical division projections by age. Figure 3 represents the matrix and marginal totals.

2.5. State projections by household type

Projections by household type for Queensland were produced by converting the relevant projections by living arrangement into numbers of families and hence into households. Six household types, four family and two non-family types, may be distinguished from the 15 living arrangements (Table 2).

2.5.1. Couple family with children households

Couple families with children contain two parents. Therefore the projected number of these families was calculated by taking the sum of people in the living arrangement 'parent in a couple family with children' across all age groups and dividing by 2. This gave the number of *families*. Because there are a small number of multi-family households this number needed to be reduced slightly to give the number of couple family with children *households*. The multi-family household scaling factor in this case was 0.9873724. It was estimated as follows. The ABS estimate of the total number of households in Queensland in mid-2001 is 1,382,800 (ABS 2004a: 86). The total number of family households was calculated by subtracting the number of non-family households from the total:

$$\begin{aligned}\text{Family households} &= \text{Total households} - \text{Group households} - \text{Lone person households} \\ &= 1,382,800 - 64,077 - 329,595 \\ &= 989,128\end{aligned}$$

where the number of group and lone person households was calculated as set out in subsections 2.5.5 and 2.5.6 below. The scaling factor is therefore the number of family households divided by the number of families, where the number of families was calculated as described at the beginning of this subsection and in subsections 2.5.2, 2.5.3 and 2.5.4 (note that this meant the number of *families* of each type had to be calculated before the number of family *households* could be computed). Thus,

$$\text{Multi-family scaling factor} = \frac{989,128}{1,001,778} = 0.9873724.$$

It had to be assumed that this scaling factor applied to all four types of family households due to the lack of more detailed data.

2.5.2. Couple families without children households

The number of couple families without children was estimated in the same way as for couple families with children. The number of partners in these families was summed across age groups, divided by 2 to obtain the number of families, and then multiplied by the multi-family scaling factor to obtain the number of households.

2.5.3. Lone parent family households

The number of lone parent families is equal to the number of people in the living arrangement 'lone parent'. This number was multiplied by the 0.9873724 multi-family scaling factor to obtain the number of one parent family households.

2.5.4. Other family households

The number of other families was determined by dividing the number of individuals by the average 'other family' household size for Queensland in 2001. This average household size was obtained from the ABS household projections volume (ABS 2004a: 117). Because an all-Queensland figure was not published, a population-weighted average of the listed Brisbane and balance of state average household family sizes was taken. This figure is 2.1103759 and was assumed to remain constant for all projection years. To allow for multi-family households the number of other families was multiplied by the 0.9873724 multi-family scaling factor.

2.5.5. Group households

The number of group households was calculated by dividing the number of group household members by the average group household size for Queensland in 2001. Again, this average was computed as a population-weighted average of the listed Brisbane and balance of state average group household sizes in the ABS household projections volume (ABS 2004a: 117). The average household size is 2.247276, assumed to remain unchanged in the projections.

2.5.6. Lone person households

The number of lone person households is exactly equal to the number of people in the living arrangement 'living alone'.

It is worth commenting here that a small refinement of the above method for converting persons by living arrangement into households is possible. It involves distinguishing between single and multi-family households and arguably makes the process simpler and more

transparent. The family household categories could consist of four single-family household types: (i) couple families with children, (ii) couple families without children, (iii) lone parent families and (iv) other family households; and (v) multi-family households. The number of households in the first three types could be found directly without the use of any scaling factor. The number of couple family with children households would be found by multiplying the number of parents by 0.5; the number of couple family without children households would be calculated by multiplying the number of partners by 0.5; and the number of lone parent family households would be exactly equal to the number of people in the living arrangement 'lone parent'. The number of other family households and multi-family households would have to be computed by dividing the number of members of such households by an empirically-derived average household size. The reason this simpler method was not followed is due to the use of ABS living arrangement definitions, which include re-coded variables from the 1986 and 1991 Censuses. Extracting data on the slightly modified categorisation above would have demanded more time and resources than were available for this set of projections. Empirically this refinement would make little difference to the projections but would be more satisfactory conceptually.

2.6. Regional projections by household type

Preliminary household projections for the statistical divisions were calculated in the same way as for the State but with one exception. The ABS household projections volume presents mid-2001 household estimates not only for Queensland but for Brisbane and the rest of the state (ABS 2004a: 86). Applying the method exactly as set out in section 2.5 gave a total household number in 2001 for Brisbane which was very slightly lower than the published ABS figure (and hence a rest of state number which was very slightly higher). It has been assumed that this arises from spatial variations in the ratio of family households to families (the multi-family scaling factor). Thus the numbers of family households in Brisbane and other statistical divisions were adjusted slightly so that the 2001 household totals agreed with the published ABS figures. These adjusted multi-family scaling factors were applied throughout the projection horizon. For Brisbane a figure of 0.996123 was used whilst for other statistical divisions the multi-family scaling factor was 0.980267.

The household numbers at this stage, however, remain preliminary because the number of households of each type must add up across the statistical divisions to the State total. Small amounts of scaling were required for all household types except lone persons. The number of

lone persons in each statistical division automatically summed to the State total because the number of lone person households is equal to the number of persons in the living arrangement 'living alone', and the statistical division population by living arrangement was constrained to the State figures in section 2.4.

3. Selected results

3.1 State

According to these projections the number of households in Queensland is projected to increase from 1.38 million in 2001 to 2.30 million by 2026 (Table 3). This represents a growth of about two-thirds, faster than the 45% expected increase in population numbers over the same period (from 3.6 to 5.3 million). As a consequence average household size is projected to fall from about 2.6 persons to 2.3. These figures are close to the ABS Series II household projections (ABS 2004a: 86) which suggest a total of 2.32 million households in Queensland by 2026 with an average household size of between 2.2 and 2.3.

The fastest growing household types are lone person households (increasing by 109% over the period 2001-26), followed by couple households without children (93%). The smallest increase, 15%, is expected in the category of couple family households with children. At about the present time (2005) the number of childless couple households is expected to exceed the number with children for the first time.

3.2 Regions

Figure 4 shows how household numbers are expected grow by region over the period 2001-26 relative to 2001. These trends largely reflect population change, with the lowest household growth in the three western statistical divisions and the highest in Wide Bay-Burnett and the South East. Average household size changes are fairly similar across the regions (Table 4).

The increase in household numbers in the South East is projected to be slightly higher than the State as a whole with the 2001 total of 0.91 million increasing by 72% to reach 1.57 million by 2026. Figure 5 illustrates the growth by household type for the South East region whilst Figure 6 shows the expected pattern for Queensland outside the South East. It can be seen that the trends are fairly similar in both graphs except that the South East is projected to experience faster household growth in all categories, and the number of couple family with

children households is expected to change little outside the South East. The full set of regional household projections is given in Tables A and B in the Appendix.

4. The next set of household projections

These household projections were based on the Queensland Government 2001-based population projections and living arrangement proportions extrapolated from 1986-2001 Census data. New projections are required periodically when updated data become available and/or slight changes in demographic trends are identified. New population and household projections for Queensland's regions are planned for 2006 which will be able to take into account the most recent demographic data, including a revised set of international migration figures (for details, see ABS 2004b).

Literature cited

ABS (2004a) *Household and Family Projections, Australia, 2001 to 2026*. Catalogue number 3236.0. Canberra: ABS.

ABS (2004b) *Australian Demographic Statistics*, June quarter 2004. Catalogue number 3101.0. Technical note pp 33-41.

Bell, M., Cooper, J.A. and Les, M. (1995) *Household and Family Forecasting Models: A Review*. Canberra: Department of Housing and Regional Development.

Table 1: Living arrangement types

Parent in a couple family
Child in a couple family
Other related persons in a couple family
Partner in a couple only family
Other related person in a couple only family
Lone parent in a lone parent family (male)
Lone parent in a lone parent family (female)
Child in a lone parent family
Other related persons in a lone parent family
Related persons living in other family types
Unrelated individual living in a family household
Group household member
Living alone (male)
Living alone (female)
Usual resident of a non-private dwelling

Table 2: Household types

Family households
Couple family with children households
Couple without children households
One parent family households
Other family households
Group households
Lone person households

Table 3: Household projections by type, Queensland, 2001-26

	2001	2006	2011	2016	2021	2026
						<i>thousands</i>
Couple family with children households	439	432	439	455	481	505
Couple without children households	371	450	524	596	659	716
One parent family households	162	189	212	231	247	262
Other family households	18	20	21	22	22	23
Family households	989	1,091	1,196	1,303	1,409	1,506
Group households	64	82	92	100	104	107
Lone person households	330	414	486	555	621	690
Total	1,383	1,587	1,774	1,959	2,134	2,303

Table 4: Average household size by region, 2001-26

	2001	2006	2011	2016	2021	2026
Wide Bay-Burnett	2.54	2.41	2.32	2.25	2.20	2.16
Darling Downs	2.67	2.57	2.49	2.43	2.37	2.33
South West	2.62	2.53	2.45	2.39	2.35	2.32
Fitzroy	2.72	2.61	2.53	2.47	2.43	2.39
Central West	2.68	2.59	2.52	2.47	2.42	2.39
Mackay	2.70	2.56	2.46	2.38	2.33	2.30
Northern	2.76	2.69	2.63	2.57	2.53	2.49
Far North	2.64	2.50	2.40	2.33	2.29	2.25
North West	2.94	2.79	2.68	2.60	2.55	2.51
South East Queensland	2.60	2.52	2.45	2.39	2.33	2.29
Queensland	2.62	2.53	2.45	2.39	2.34	2.30

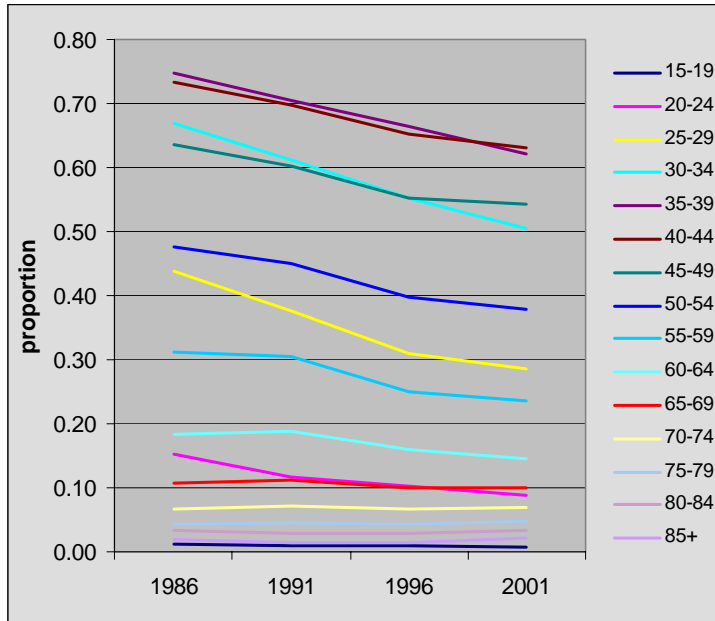


Figure 1: The proportion of people who are parents in a couple family in Queensland, 1986-2001



Figure 2: Matrix of Queensland 2001 population by living arrangement

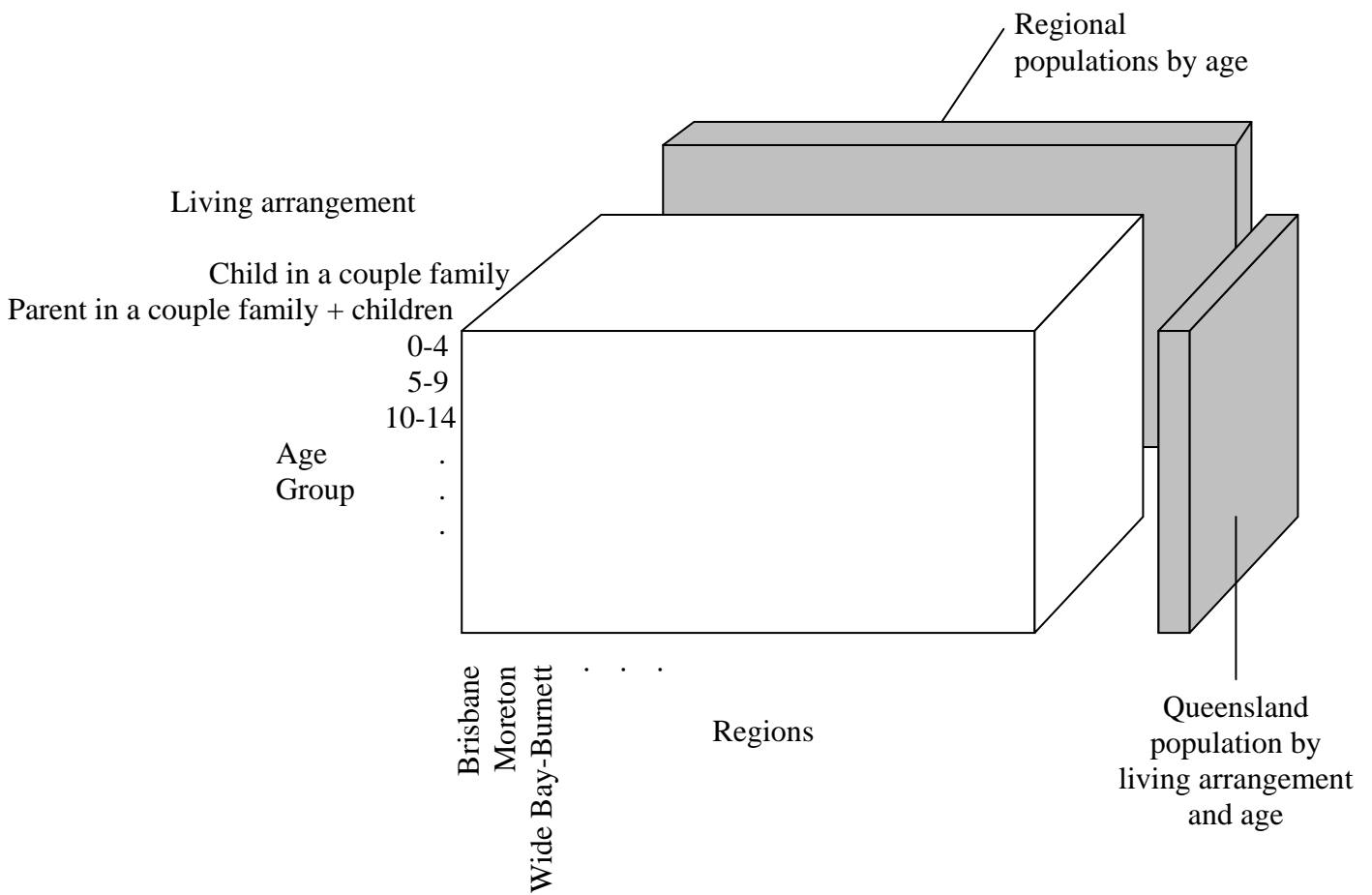


Figure 3: Matrix of regional populations by age and living arrangement

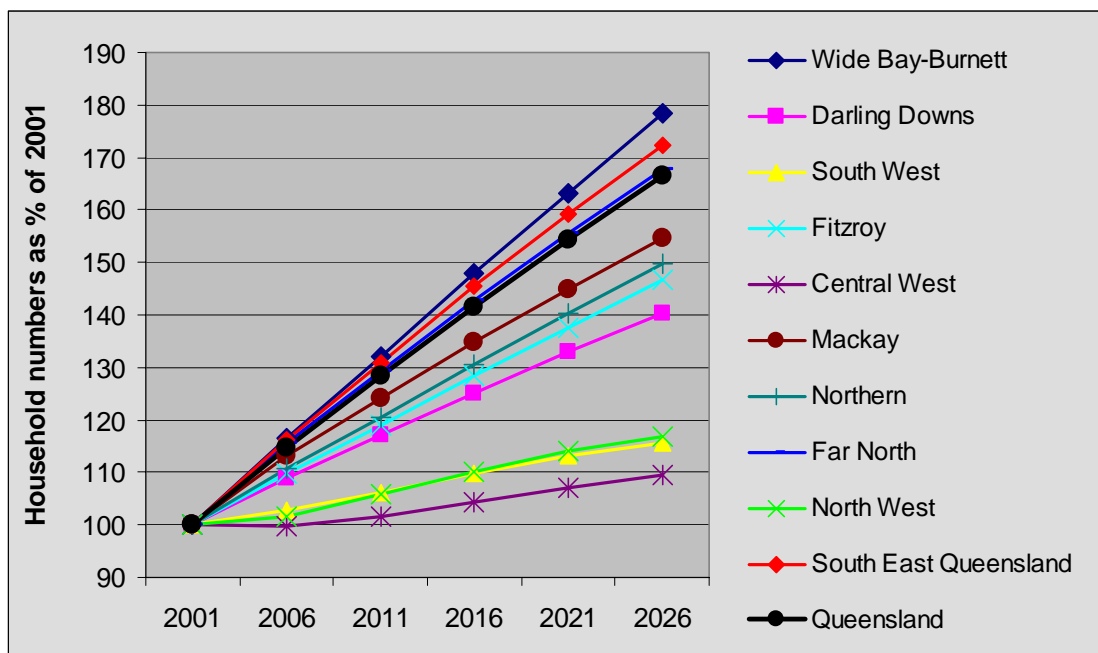


Figure 4: Growth in household numbers by region, 2001-26

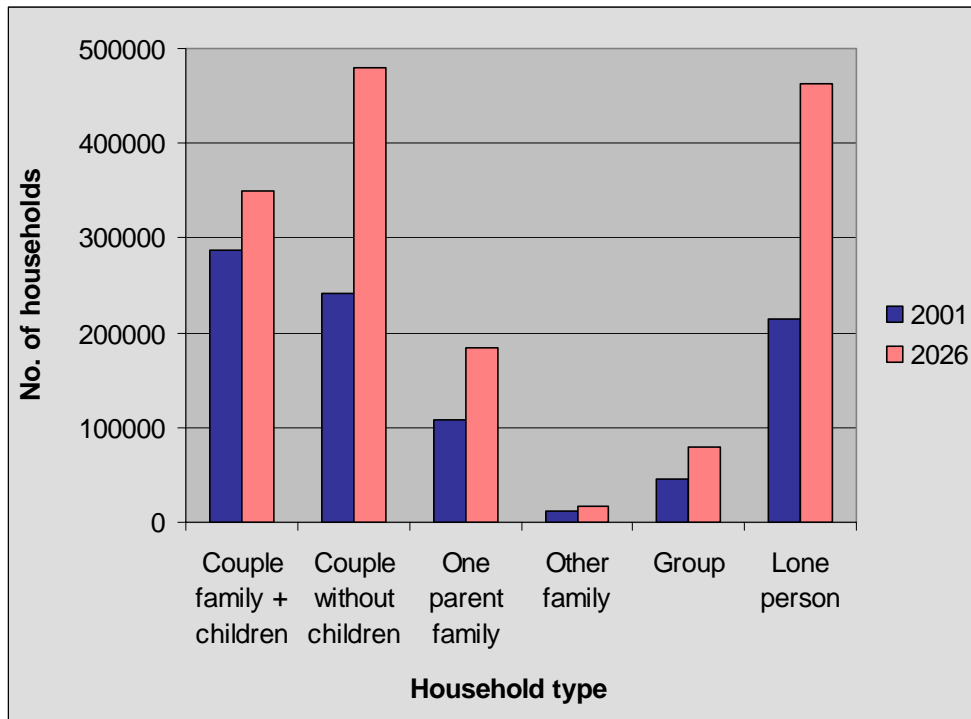


Figure 5: Household numbers by type for South East Queensland, 2001 estimates and 2026 projections

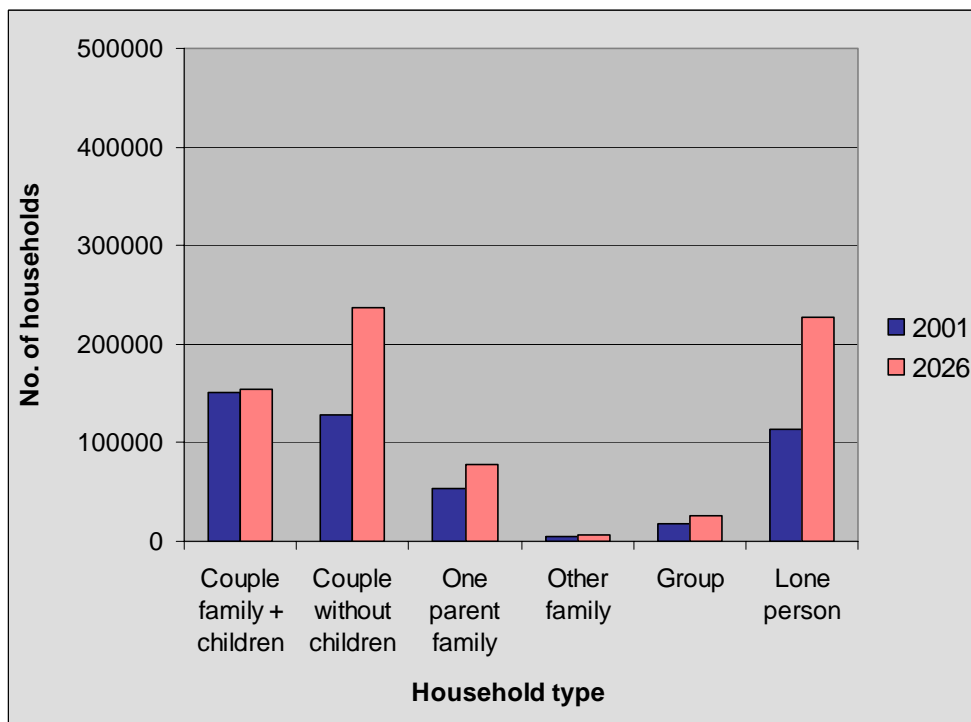


Figure 6: Household numbers by type for Queensland outside the South East, 2001 estimates and 2026 projections

Appendix

Table A: Projections by household type by region, 2001-26

Wide Bay-Burnett	2001	2006	2011	2016	2021	2026
					<i>thousands</i>	
Couple family with children households	26.5	25.2	25.1	25.7	27.4	29.1
Couple without children households	29.6	37.5	44.5	51.1	56.8	61.9
One parent family households	10.5	12.3	13.9	15.2	16.3	17.5
Other family households	0.9	0.8	0.8	0.8	0.8	0.8
Group households	2.5	3.1	3.5	3.8	4.0	4.2
Lone person households	23.1	29.6	35.4	41.1	46.7	52.6
Total	93.1	108.5	123.0	137.7	152.0	166.0
Darling Downs	2001	2006	2011	2016	2021	2026
					<i>thousands</i>	
Couple family with children households	25.8	23.7	22.9	22.8	23.4	24.0
Couple without children households	21.6	25.5	28.8	31.7	34.1	36.0
One parent family households	7.9	8.6	9.1	9.5	9.9	10.3
Other family households	1.0	1.0	1.0	1.0	1.0	1.0
Group households	2.8	3.5	3.7	3.9	3.9	3.9
Lone person households	19.5	23.5	26.6	29.5	32.3	35.2
Total	78.7	85.7	92.0	98.5	104.6	110.4
South West	2001	2006	2011	2016	2021	2026
					<i>thousands</i>	
Couple family with children households	3.6	3.1	2.9	2.8	2.9	2.9
Couple without children households	2.6	2.9	3.2	3.4	3.5	3.6
One parent family households	0.9	0.9	0.9	1.0	1.0	1.0
Other family households	0.1	0.1	0.1	0.1	0.1	0.1
Group households	0.3	0.3	0.3	0.3	0.3	0.3
Lone person households	2.8	3.2	3.5	3.7	3.9	4.1
Total	10.3	10.6	10.9	11.3	11.6	11.9
Fitzroy	2001	2006	2011	2016	2021	2026
					<i>thousands</i>	
Couple family with children households	22.8	21.3	21.0	21.3	22.3	23.3
Couple without children households	17.7	21.0	23.8	26.4	28.6	30.5
One parent family households	7.5	8.3	9.1	9.7	10.2	10.7
Other family households	0.8	0.8	0.8	0.8	0.8	0.9
Group households	2.3	2.8	3.0	3.1	3.2	3.3
Lone person households	15.8	19.2	22.0	24.5	26.9	29.5
Total	66.9	73.4	79.6	85.9	92.0	98.2

Table A continued

Central West	2001	2006	2011	2016	2021	2026
					<i>thousands</i>	
Couple family with children households	1.6	1.4	1.3	1.3	1.3	1.3
Couple without children households	1.2	1.3	1.4	1.4	1.5	1.5
One parent family households	0.4	0.4	0.4	0.4	0.4	0.4
Other family households	0.0	0.0	0.0	0.0	0.0	0.0
Group households	0.2	0.2	0.2	0.2	0.1	0.1
Lone person households	1.3	1.4	1.5	1.6	1.7	1.8
Total	4.7	4.7	4.7	4.9	5.0	5.1
Mackay	2001	2006	2011	2016	2021	2026
					<i>thousands</i>	
Couple family with children households	17.9	17.0	16.6	16.7	17.4	18.0
Couple without children households	13.8	17.2	20.0	22.4	24.2	25.8
One parent family households	5.3	5.9	6.4	6.8	7.2	7.6
Other family households	0.4	0.4	0.4	0.4	0.5	0.5
Group households	1.8	2.1	2.2	2.4	2.4	2.5
Lone person households	11.8	15.0	17.6	20.0	22.2	24.4
Total	51.0	57.7	63.3	68.7	73.8	78.8
Northern	2001	2006	2011	2016	2021	2026
					<i>thousands</i>	
Couple family with children households	23.1	22.2	22.2	22.7	24.0	25.1
Couple without children households	17.9	21.1	23.9	26.6	28.9	30.9
One parent family households	8.0	8.9	9.7	10.4	11.1	11.7
Other family households	0.9	0.9	1.0	1.0	1.1	1.1
Group households	3.5	4.0	4.4	4.7	4.8	5.0
Lone person households	15.6	19.1	21.8	24.5	26.9	29.4
Total	69.0	76.3	83.1	90.0	96.8	103.3
Far North	2001	2006	2011	2016	2021	2026
					<i>thousands</i>	
Couple family with children households	25.2	23.9	23.9	24.5	26.1	27.6
Couple without children households	21.9	26.9	31.4	35.6	39.2	42.4
One parent family households	10.9	12.6	14.1	15.3	16.5	17.7
Other family households	1.2	1.4	1.6	1.6	1.7	1.8
Group households	4.1	5.4	6.0	6.5	6.7	7.0
Lone person households	21.5	27.7	32.7	37.4	41.6	45.9
Total	84.8	98.1	109.6	121.0	131.8	142.4

Table A continued

North West	2001	2006	2011	2016	2021	2026
					<i>thousands</i>	
Couple family with children households	4.2	3.6	3.4	3.3	3.3	3.3
Couple without children households	2.7	3.0	3.3	3.5	3.6	3.7
One parent family households	1.4	1.4	1.5	1.5	1.6	1.6
Other family households	0.2	0.2	0.2	0.2	0.2	0.2
Group households	0.5	0.5	0.5	0.5	0.5	0.5
Lone person households	2.7	3.2	3.5	3.8	4.1	4.3
Total	11.7	11.8	12.3	12.9	13.3	13.6
					<i>thousands</i>	
South East Queensland	2001	2006	2011	2016	2021	2026
					<i>thousands</i>	
Couple family + children	288.0	290.2	300.1	313.5	332.9	350.4
Couple without children	241.8	293.6	343.7	393.5	438.8	479.5
One parent family	108.8	129.8	147.0	161.3	172.7	183.7
Other family	12.6	14.0	15.0	15.8	16.2	16.5
Group	46.1	60.3	68.6	74.7	77.8	80.2
Lone person	215.4	271.9	321.1	369.1	414.8	463.1
Total	912.7	1,059.8	1,195.5	1,327.8	1,453.2	1,573.3
					<i>thousands</i>	
Queensland	2001	2006	2011	2016	2021	2026
					<i>thousands</i>	
Couple family with children households	438.8	431.7	439.4	454.8	480.9	505.1
Couple without children households	370.7	449.9	523.9	595.7	659.2	715.8
One parent family households	161.6	189.3	211.9	231.1	246.8	262.2
Other family households	18.0	19.6	20.9	21.8	22.4	22.8
Group households	64.1	82.1	92.4	100.0	104.0	107.0
Lone person households	329.6	413.8	485.7	555.3	621.0	690.3
Total	1,382.8	1,586.5	1,774.2	1,958.7	2,134.3	2,303.1

Table B: Projected change by household type by region, 2001-26

Wide Bay-Burnett	Households, '000s		Change 2001-26		% of total	
	2001	2026	'000s	%	2001	2026
Couple family + children	26.5	29.1	2.5	9.5	28.5	17.5
Couple without children	29.6	61.9	32.3	109.3	31.8	37.3
One parent family	10.5	17.5	7.0	66.4	11.3	10.5
Other family	0.9	0.8	-0.1	-5.8	0.9	0.5
Group	2.5	4.2	1.7	70.4	2.6	2.5
Lone person	23.1	52.6	29.4	127.1	24.8	31.6
Total	93.1	166.0	72.9	78.3	100.0	100.0
Darling Downs	Households, '000s		Change 2001-26		% of total	
	2001	2026	'000s	%	2001	2026
Couple family + children	25.8	24.0	-1.8	-7.0	32.8	21.7
Couple without children	21.6	36.0	14.4	66.9	27.4	32.6
One parent family	7.9	10.3	2.3	29.3	10.1	9.3
Other family	1.0	1.0	0.0	2.4	1.2	0.9
Group	2.8	3.9	1.1	39.7	3.6	3.6
Lone person	19.5	35.2	15.7	80.2	24.8	31.9
Total	78.7	110.4	31.8	40.4	100.0	100.0
South West	Households, '000s		Change 2001-26		% of total	
	2001	2026	'000s	%	2001	2026
Couple family + children	3.6	2.9	-0.7	-19.6	34.5	24.0
Couple without children	2.6	3.6	0.9	36.0	25.5	30.0
One parent family	0.9	1.0	0.1	10.1	8.8	8.4
Other family	0.1	0.1	0.0	-14.4	1.0	0.7
Group	0.3	0.3	0.0	-6.8	3.3	2.7
Lone person	2.8	4.1	1.3	47.6	26.8	34.2
Total	10.3	11.9	1.6	15.7	100.0	100.0
Fitzroy	Households, '000s		Change 2001-26		% of total	
	2001	2026	'000s	%	2001	2026
Couple family + children	22.8	23.3	0.4	2.0	34.1	23.7
Couple without children	17.7	30.5	12.8	72.6	26.5	31.1
One parent family	7.5	10.7	3.3	43.6	11.2	10.9
Other family	0.8	0.9	0.1	12.8	1.1	0.9
Group	2.3	3.3	1.0	42.7	3.4	3.3
Lone person	15.8	29.5	13.7	86.4	23.7	30.0
Total	66.9	98.2	31.3	46.8	100.0	100.0
Central West	Households, '000s		Change 2001-26		% of total	
	2001	2026	'000s	%	2001	2026
Couple family + children	1.6	1.3	-0.3	-19.1	33.8	25.0
Couple without children	1.2	1.5	0.3	22.5	26.4	29.6
One parent family	0.4	0.4	0.0	3.0	8.0	7.6
Other family	0.0	0.0	0.0	-37.2	0.9	0.5
Group	0.2	0.1	0.0	-9.2	3.5	2.9
Lone person	1.3	1.8	0.5	37.6	27.4	34.5
Total	4.7	5.1	0.4	9.4	100.0	100.0

Table B continued

Mackay	Households, '000s		Change 2001-26		% of total	
	2001	2026	'000s	%	2001	2026
Couple family + children	17.9	18.0	0.1	0.6	35.1	22.9
Couple without children	13.8	25.8	12.0	87.1	27.0	32.7
One parent family	5.3	7.6	2.3	44.6	10.3	9.7
Other family	0.4	0.5	0.0	4.3	0.9	0.6
Group	1.8	2.5	0.7	40.1	3.4	3.1
Lone person	11.8	24.4	12.6	106.5	23.2	31.0
Total	51.0	78.8	27.8	54.5	100.0	100.0
Northern	Households, '000s		Change 2001-26		% of total	
	2001	2026	'000s	%	2001	2026
Couple family + children	23.1	25.1	2.0	8.8	33.5	24.3
Couple without children	17.9	30.9	13.1	73.1	25.9	30.0
One parent family	8.0	11.7	3.7	46.5	11.6	11.3
Other family	0.9	1.1	0.2	23.2	1.3	1.1
Group	3.5	5.0	1.5	43.6	5.0	4.8
Lone person	15.6	29.4	13.8	88.2	22.7	28.5
Total	69.0	103.3	34.3	49.8	100.0	100.0
Far North	Households, '000s		Change 2001-26		% of total	
	2001	2026	'000s	%	2001	2026
Couple family + children	25.2	27.6	2.4	9.6	29.7	19.4
Couple without children	21.9	42.4	20.5	94.0	25.8	29.8
One parent family	10.9	17.7	6.8	62.3	12.8	12.4
Other family	1.2	1.8	0.6	49.5	1.4	1.2
Group	4.1	7.0	2.9	69.8	4.9	4.9
Lone person	21.5	45.9	24.4	113.2	25.4	32.2
Total	84.8	142.4	57.6	67.9	100.0	100.0
North West	Households, '000s		Change 2001-26		% of total	
	2001	2026	'000s	%	2001	2026
Couple family + children	4.2	3.3	-0.8	-20.1	35.8	24.5
Couple without children	2.7	3.7	1.0	38.5	22.8	27.1
One parent family	1.4	1.6	0.2	11.9	12.3	11.8
Other family	0.2	0.2	0.0	19.0	1.6	1.7
Group	0.5	0.5	0.0	-4.5	4.4	3.6
Lone person	2.7	4.3	1.6	59.2	23.0	31.3
Total	11.7	13.6	2.0	16.8	100.0	100.0
South East Queensland	Households, '000s		Change 2001-26		% of total	
	2001	2026	'000s	%	2001	2026
Couple family + children	288.0	350.4	62.4	21.7	31.6	22.3
Couple without children	241.8	479.5	237.6	98.3	26.5	30.5
One parent family	108.8	183.7	74.8	68.8	11.9	11.7
Other family	12.6	16.5	3.9	31.1	1.4	1.0
Group	46.1	80.2	34.0	73.7	5.1	5.1
Lone person	215.4	463.1	247.8	115.1	23.6	29.4
Total	912.7	1,573.3	660.6	72.4	100.0	100.0

Table B continued

Queensland	Households, '000s		Change 2001-26		% of total	
	2001	2026	'000s	%	2001	2026
Couple family + children	438.8	505.1	66.3	15.1	31.7	21.9
Couple without children	370.7	715.8	345.1	93.1	26.8	31.1
One parent family	161.6	262.2	100.5	62.2	11.7	11.4
Other family	18.0	22.8	4.8	26.6	1.3	1.0
Group	64.1	107.0	42.9	66.9	4.6	4.6
Lone person	329.6	690.3	360.7	109.4	23.8	30.0
Total	1,382.8	2,303.1	920.3	66.6	100.0	100.0