

### Main Features

	Goodna
Language other than English spoken	23.9%
Rent to ownership ratio	1.80
Changed address in the last 5 years	54.6%
Socio-economic index	863.9*

### Commentary

This brief contains information on residents and households in the suburb of Goodna (figure 1), which is located between Brisbane and Ipswich.

- In 2001, Goodna had a usual resident population of 6,599 persons. This included 2,007 overseas born persons (32.5%) and 395 Indigenous persons (6.0%). In comparison 19.4% of Queensland residents were born overseas and 3.1% were Indigenous persons.
- Of Goodna residents, 23.9% spoke a language other than English. The most common language spoken other than English was Samoan (7.8% of the population). Figure 2 shows the top 10 languages other than English. A much lower proportion (6.9%) of Queensland residents spoke a language other than English.
- Half of Goodna residents were under the age of 31. Half of Queensland residents were under the age of 35. For half of Goodna residents the weekly household income was \$600-\$699 or less, while for Queensland it was \$700-\$799.
- Among Goodna residents, 52.8% belonged to a couple family with children, 13.9% to a couple family without children and 22.0% came from a one parent family. A further 8.2% of Goodna residents lived alone and 3.1% were classified as other.
- About a third (31.6%) of Goodna residents left school after year 12, compared with 39.8% for Queensland. A further 30.4% left after year 10, while 9.3% finished year 9 and 13.5% finished year 8. A small proportion (2.4%) never attended school.
- Within Goodna 23.4% of residents aged 15 years and over had post-school education qualifications, lower than the Queensland average of 36.3%.
- The most common occupation for Goodna residents was labouring and related work (19.0%).
- The unemployment rate for Goodna was 15.4%, nearly double the rate for Queensland (8.2%).
- The index of disadvantage for Goodna was 863.9. This is one of the lowest indexed suburbs in the state.
- In Goodna, 28.8% of people used a computer at home, with 24.0% using the internet, lower than the proportions for Queensland (42.8% and 37.3% respectively).
- There were 45.4% of residents in Goodna that had changed address in the previous five years. This was lower than the Queensland figure with 50.5% of people in Queensland having changed address in the same period.
- Of households within Goodna, 25.5% were fully owned, 46.1% were rented and 21.8% were being purchased (figure 4). The rent to ownership ratio in this area was 1.80 households renting to every household fully owning their home.
- For households in Goodna, 36.7% had two or more cars. There were 15.6% of households that had no cars.

Figure 1: Map of Goodna suburb

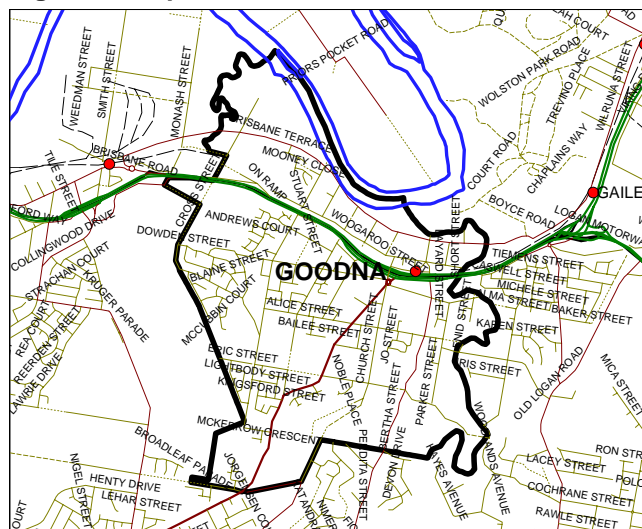


Figure 2: Main languages other than English spoken at home

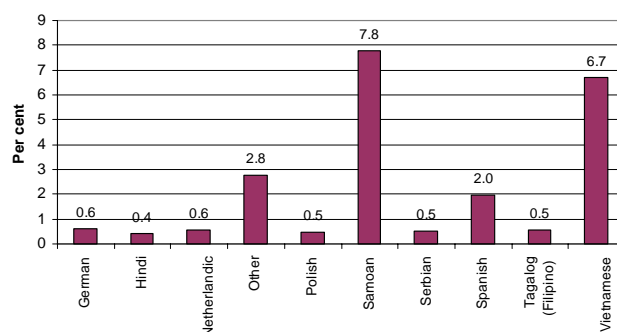


Figure 3: Age structure of Goodna residents

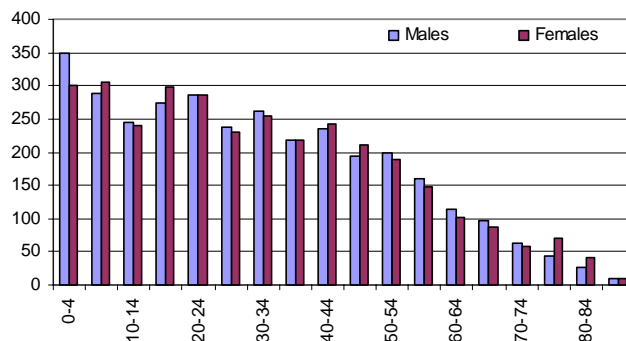
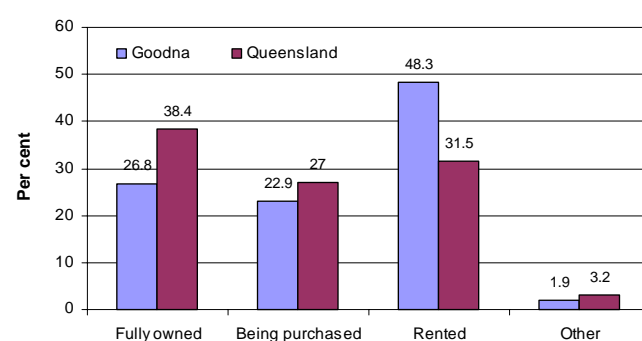


Figure 4: Proportion of households by tenure type



\* Based on Census 1996 SEIFA index