

DEMOGRAPHIC ANALYSIS OF THE BOWEN BASIN, 2010

Produced by the Office of Economic and Statistical Research, Queensland Treasury for the Queensland Department of Employment, Economic Development and Innovation

December 2010

This report is based on information available to the Office of Economic and Statistical Research at the time of preparation. It does not necessarily reflect the opinions or views of Queensland Treasury or the Queensland Government.

Any statement, opinion or advice expressed or implied in this report is made in good faith but on the basis that the State of Queensland, its agents and employees are not liable for any damage or loss whatsoever which may occur in relation to its use by the client or any third party.

Prepared by

Queensland Treasury

Prepared for

Queensland Department of Employment, Economic Development and Innovation

Contact details

For technical inquiries or further information contact:

Demography and Planning
Office of Economic and Statistical Research
Queensland Treasury
PO Box 15037, City East QLD 4002 Australia

Ph: (07) 3405 8573

www.oesr.qld.gov.au/pifu

© The State of Queensland (Queensland Treasury) 2010



You are free to copy, communicate and adapt the work, as long as you attribute the authors.

This document is licensed under a Creative Commons Attribution 2.5 Australia licence.

To view a copy of this licence, visit <http://creativecommons.org/licenses/by/2.5/au>.

To attribute this work, cite *Demographic analysis of the Bowen Basin region, 2010*, Office of Economic and Statistical Research, Queensland Treasury.

CONTENTS

| | | |
|---|---------------------------------------|----|
| 1 | SUMMARY..... | 1 |
| 2 | KEY FINDINGS..... | 2 |
| 3 | INTRODUCTION..... | 3 |
| 4 | BACKGROUND..... | 6 |
| 5 | POPULATION AND POPULATION GROWTH..... | 7 |
| 6 | POPULATION PROFILE..... | 14 |
| 7 | SOCIO-ECONOMIC PROFILE..... | 23 |
| 8 | HOUSING AND ACCOMMODATION..... | 27 |
| | APPENDICES..... | 33 |
| | GLOSSARY..... | 36 |
| | REFERENCES..... | 38 |

1. SUMMARY

This report presents a demographic profile of the Bowen Basin region based largely on the results of the 2006 Census of Population and Housing. The companion report, *Workforce analysis of the Bowen Basin region, 2010* presents an analysis of selected characteristics of the workforce of the region also based on the 2006 Census.

The report contains statistical analysis of 2006 Census results, including population and population growth, age structure, population projections, household projections, income, socio-economic advantage/disadvantage, housing types and housing tenure. Also, the report presents recent trends in dwelling activity and residential property sales based on unpublished data. Statistical information is presented for reformed local government areas (LGAs) and also former LGAs for some aspects of the demographic profile.

The region experienced significant population increases between 1976 and 1986, which coincided with rapid development of coal mining. Between 1986 and 2001, out-migration resulted in population losses with the resident population falling from 79,600 to 71,800 during that period. A resurgence in mining activity since 2001 resulted in strong population growth in the last decade. By 2009, the estimated resident population reached 82,600 people, exceeding the level last seen in 1986. The resident population growth rate in the year to June 2009 was 2.5 per cent, slightly lower than the state growth rate of 2.7 per cent. Based on the projected growth rate of 2.2 per cent used in OESR's 2008 high series projections, the population of the Bowen Basin will increase to 133,900 people by 2031. Using the more moderate growth assumption (1.6 per cent) used in OESR's medium series, the regional population will increase to 116,200 by 2031.

Non-resident workers constitute a significant proportion of the population and workforce of the Bowen Basin. OESR's 2009 Survey of Accommodation Providers showed that 12,200 people, or 13 per cent of the full-time equivalent population of the region, comprised non-resident workers. Many of these workers have their usual place of residence in Mackay, Gladstone or Rockhampton and are therefore excluded from ABS resident population estimates of the Bowen Basin.

Compared with the whole population of Queensland, the region's population is younger. In 2006, the median age of the resident population was 33 years, three years younger than the state median age. Ageing of the population in the next 20 to 30 years will result in increases in median ages, but the population of the Bowen Basin region will remain comparatively younger than the state population, due largely to expected continued migration of young workers and their families to the area. By 2031, the median age of the regional population will be 35 years, compared with the state median of 41 years.

The region's socio-economic profile, like its population profile, shows differences from the respective state profiles. Widespread well-paid mining employment in the region contributed to higher incomes for individuals, families and households than other Queenslanders at the 2006 Census. For example, median weekly family income in the LGA of Isaac was \$1,980, much higher than the state median of \$1,154. In other areas of the region with less mining activity, incomes were lower. For example, in the Bowen area the median weekly family income was only \$1,077.

Housing and accommodation patterns in the Bowen Basin region are similar to those elsewhere in Queensland, with separate houses being the dominant dwelling type and most homes owned outright or being purchased. Differences exist in the proportions in each category. Separate houses account for 86 per cent of occupied private dwellings in the region, compared with only 80 per cent of dwellings across the state. On the other hand, detached dwellings such as townhouses and units are less prevalent in the region than elsewhere. Also, rental tenure accounts for 40 per cent of housing tenures in the Bowen Basin, compared with only 31 per cent in Queensland.

Median land and house sale prices in the region have increased significantly in all areas since 2001–02. For example, the median sale price of houses in Isaac LGA increased nearly 11-fold from about \$35,000 in 2001–02 to \$379,000 in 2008–09, which was almost as high as the median price of \$385,000 in the nearby coastal LGA of Mackay.

2. KEY FINDINGS

Estimated resident population of the Bowen Basin region was almost 83,000 people in 2006

The estimated resident population of the Bowen Basin region was 82,592 people at 30 June 2006. Central Highlands LGA, where mining is the main industry, added 1,060 people to its population in the year to June 2009 or more than half of the regional population growth of 2,003 people.

Regional population growth was 2.5 per cent in the year to June 2009

Growth in the Bowen Basin region in the year to June 2009 was 2.5 per cent, almost as fast as state population growth of 2.7 per cent in the same period. Central Highlands LGA was the fastest growing area with an annual growth rate of 3.6 per cent over the year.

Regional population may be as high as 134,000 people by 2031

Based on OESR's 2008 high series projections, the population of the region is projected to reach 133,896 based on an average annual growth rate of 2.9 per cent between 2006 and 2031. The medium series projection is that the population will reach 116,196, based on more moderate annual growth of 1.9 per cent over the 25 year period.

At least one in eight people in the Bowen Basin region in 2009 was a non-resident worker

There were 12,228 non-resident workers in the Bowen Basin region in July 2009, representing 13 per cent of the full-time equivalent (FTE) population of 93,506 people. The resident population of 81,278 people comprised the balance of the region's FTE population.

Projected median age of 35 years in 2031

The median age of the regional population is projected to increase slightly from 33 years in 2006 to 35 years in 2031. In comparison, the state population is projected to age more, with the median age expected to increase from 36 years in 2006 to 41 years in 2031.

Median incomes in the Bowen Basin were higher than median Queensland incomes in 2006

In 2006, the highest median individual, family and household incomes in the region occurred in Central Highlands LGA. The respective weekly income values of \$635, \$1,732 and \$1,535 were well above the corresponding medians for Queensland of \$476, \$1,154 and \$1,033.

Separate houses and caravans more common in the region than elsewhere in Queensland

Separate houses comprised 86 per cent of all occupied private dwellings in the region in 2006, whereas only 80 per cent of Queensland dwellings were in this category. By contrast, attached dwellings such as townhouses and units comprised 9 per cent of occupied private dwellings in the Bowen Basin, but 19 per cent of Queensland dwellings. Improvised dwellings such as caravans and cabins comprised 4 per cent of occupied dwellings in the region, a much higher proportion of occupied private dwellings than in the state as a whole (1 per cent).

Median house and land sale prices at least doubled between 2001–02 and 2008–09

Between 2001–02 and 2008–09, the median sale price of houses increased nearly 11-fold in the LGA of Isaac from \$34,900 to \$379,000. In Central Highlands LGA, the median price rose from \$85,000 to \$320,000 in the same period. Median land sale prices also increased significantly over the eight year period. For example, in the statistical local area (SLA) of Bowen, the median land sale price was \$25,000 in 2001–02 and increased to \$142,000 by 2008–09.

3. INTRODUCTION

3.1 About this report

This is the first report of the Population study for Bowen Basin region, 2010 project. It contains an analysis of the demographic characteristics of the region at the 2006 Census, including population growth and projections, household composition, household and dwelling projections, income, qualifications and dwelling tenure. The second report presents workforce characteristics, including occupation and industry of the employed population at the 2006 Census, and also an analysis of place of work by place of usual residence. The *Bowen Basin population report, 2009* was the key deliverable of stage one of the project.

3.2 Description of the project

The project was divided into three stages, with the following outputs:

- **Stage one:** Full-time equivalent population and non-resident population estimates for Bowen Basin LGAs from 2006 to 2009 (*Bowen Basin population report, 2009*).
- **Stage two:** Scoping study for stage three—consultations with stakeholders to identify variables and issues to be analysed at local government area and locality level.
- **Stage three:** A detailed demographic, employment and housing analysis of the Bowen Basin in two reports.

3.3 Project clients

The primary client for the project is the Department of Employment, Economic Development and Innovation (DEEDI). The secondary client for the project is the Coal Infrastructure Task Force of the Department of Infrastructure and Planning (DIP).

3.4 Rationale for the project

The project will:

- provide baseline information for regional planning studies of Central Queensland;
- provide time series information on non-resident workers and estimates of the full-time equivalent population of the Bowen Basin;
- inform local government planning schemes; and
- inform the implementation of the Sustainable Resources Community Policy.

3.5 Geographical coverage

The Bowen Basin covers LGAs of Banana Shire, Central Highlands Regional Council, Isaac Regional Council and Whitsunday Regional Council. These areas were formed in 2008 following local government amalgamations in Queensland.

In this report, statistical tables are presented for existing LGAs and also pre-amalgamated LGAs. Boundaries of pre-amalgamated LGAs correspond with those in existence at the 2006 Census. At the SLA level, boundaries for the Bowen Basin differ from the former 2006 boundaries only in the case of Banana (S) SLA, which now incorporates part of the former Taroom (S). Nevertheless this report retains the 2006 SLA naming convention, rather than adopting the 2008 names, in order to avoid confusion.

Table 1 shows the concordance between the new LGAs and the pre-amalgamated LGAs and also SLAs introduced in 2008 following the local government reforms.

Table 1. LGAs and SLAs making up Bowen Basin region

| Local government area | Pre-amalgamated LGAs included in current LGA | 2008 ASGC SLA name |
|-----------------------|--|---|
| Banana (S) | Banana (S) Taroom (S) - part | Banana (S) |
| Central Highlands (R) | Bauhinia (S) Duarina (S) Emerald (S) Peak Downs (S) | Central Highlands (R) - Bauhinia Central Highlands (R) - Duaringa Central Highlands (R) - Emerald Central Highlands (R) - Peak Downs |
| Isaac (R) | Belyando (S) Broadsound (S) Nebo (S) | Isaac (R) - Belyando Isaac (R) - Broadsound Isaac (R) - Nebo |
| Whitsunday (R)* | Bowen (S) Whitsunday (S) | Whitsunday (R) - Bowen |

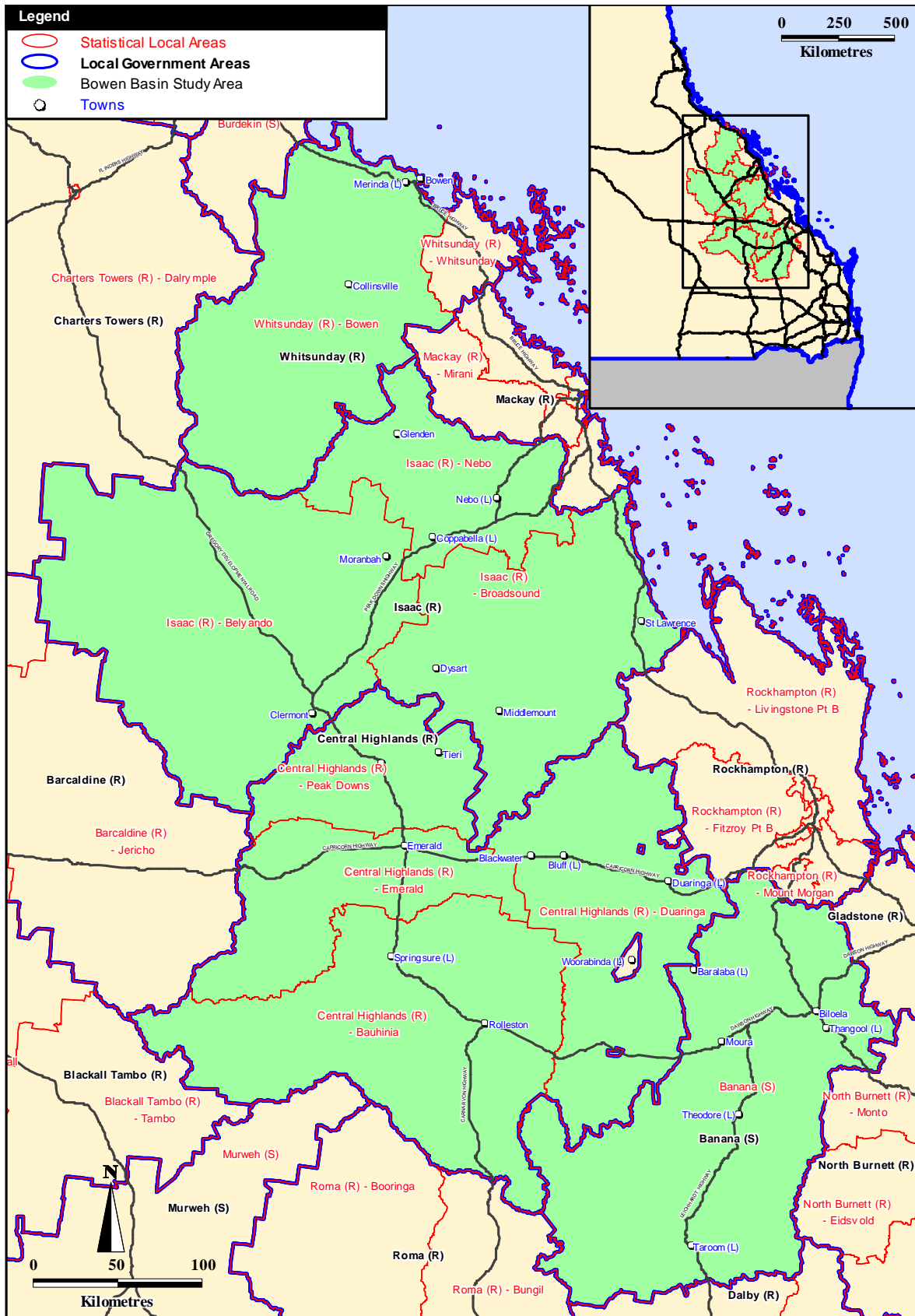
(R) - Regional Council, (S) - Shire

* Note: This report only includes the former Bowen (S) and does not include the former Whitsunday (S).

Source: OESR, 2010

Figure 1 on the next page shows the geographical coverage of the Bowen Basin and 2008 statistical boundaries in the region.

Figure 1: Bowen Basin showing 2008 LGA and SLA boundaries



(L) - Locality, (R) - Regional Council, (S) - Shire
 Source: PIFU, 2010

4. BACKGROUND

4.1 Economic and social impacts of Bowen Basin mining

The Bowen Basin contains world-class mining resources. It produces most of Queensland's high-grade coking coal, and much of the export-traded thermal coal. In 2008–09, Queensland exported approximately 152 million tonnes of coal, with a gross sales value of about \$A16.4 billion. Most of this coal was exported from collieries in the Bowen Basin through the Central Queensland ports of Abbot Point, Dalrymple Bay, Hay Point and Gladstone¹. Consequently, mining and mineral processing industries make a vital contribution to Central Queensland's economic performance. OESR's estimates of gross regional product indicate that the value of output from the Bowen Basin area (Fitzroy and Mackay statistical divisions) in 2005–06 was almost \$28 billion or 15 per cent of gross state product.

Coal mining has generated considerable employment in the region and will continue to do so as world demand for Queensland coal continues to increase. In conjunction with the increase in employment, there has been a measurable increase in the population due to construction and operational workforces in coal mining and related industries. Monitoring and planning for social impacts arising from this growth is complicated by the increasing use of fly-in/fly-out and drive-in/drive-out (FIFO/DIDO) workers to meet the employment needs of resource communities. These non-resident workers are not included in official population estimates prepared by the Australian Bureau of Statistics (ABS).

In order to derive estimates of non-resident worker populations in resource areas, the former Planning Information and Forecasting Unit (PIFU) conducted annual surveys of accommodation providers between 2006 and 2009. Results of these surveys inform estimates of the region's total population, including non-resident workers engaged in construction and mining activity. The participation of non-resident workers in Queensland's coal mining industry is slowly increasing, with these workers making up 13 per cent of Bowen Basin's full-time equivalent population in 2009 compared with just 12 per cent in 2006.

Results from PIFU's annual surveys of accommodation providers in the Bowen Basin indicate how the region could develop if further expansion occurs in mining operations. For example, the combination of FIFO/DIDO workforces and non-private accommodation is now well established, and provides a flexible solution to meeting rapid workforce expansion. Even with the sudden increase in demand experienced in 2007–08, single persons quarters (SPQs) continued to house an increasing proportion of non-resident workers, due to expanding capacity and improvements in amenity. In 2009, SPQ accommodation accounted for 90 per cent of all non-resident workers who stayed in the Bowen Basin in July 2009, compared with 81 per cent in 2006.

Assessment of social impacts associated with growth in the mining industry has gained further prominence following Cabinet's endorsement of the Sustainable Resources Communities Policy on 7 July 2008. This policy will require assessment of cumulative population thresholds through a Social Impact Plan as a condition of granting tenure to all new mining projects. Effective implementation of the policy will require accurate, up-to-date monitoring of population growth, including the non-resident worker populations of current and future mining projects. Major growth arising from other sources, such as construction of major infrastructure and other projects, will also need to be considered.

¹ Department of Employment, Economic Development and Innovation, *Coal statistics*, online

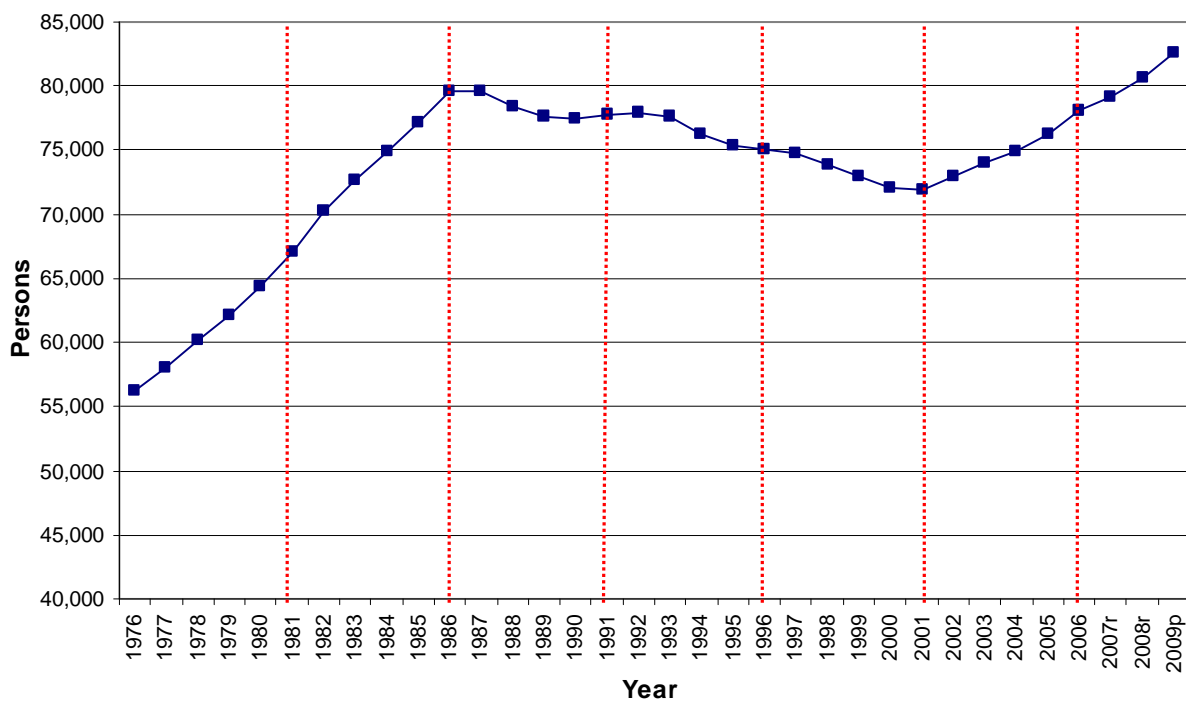
5. POPULATION AND POPULATION GROWTH

5.1 Estimated resident population

The Bowen Basin region had an estimated resident population (ERP) of 82,592 people at 30 June 2009², representing a growth rate of 2.5 per cent over the previous year. The latest annual population growth in the region was almost as fast as that of Queensland (2.7 per cent) in the same period. In Central Highlands (R), where mining is the main industry, the growth rate (3.6 per cent) in the year to June 2009 exceeded the state average. The population increase (1,060 people) in Central Highlands (R) accounted for more than half (53 per cent) of the total increase (2,003 people) in the region in the same period.

The region experienced significant population increases between 1976 and 1986, with the resident population increasing from around 56,000 to 79,600 during that period (Figure 2). This increase coincided with the rapid development of coal mines such as Goonyella, Peak Downs, Saraji and Norwich Park during the 1970s. The region experienced significant population losses between 1986 and 2001, with the resident population falling from 79,600 to 71,800 during that period. This decline was largely triggered by out-migration of working age families from the area following job losses in the mining industry, particularly between 1996 and 2001. Since 2001 there has been a resurgence of mining activity across the entire Bowen Basin region, along with construction of new port and tourist facilities in Abbot Point and Bowen. Job growth from these activities reversed Bowen's population decline, such that the population of the region in 2009 (82,600 people) exceeded the level last seen in 1986.

Figure 2. Resident population estimates for Bowen Basin region, 1976 to 2009p



p - preliminary, r - revised

Source: ABS, *Regional population growth, Australia*, cat. no. 3218.0, online

² ABS, *Regional population growth*, cat. no. 3218.0, online

The LGA of Central Highlands (R) contained the largest population in the Bowen Basin, with an estimated 30,403 people at 30 June 2009. In Isaac (R), the ERP was 22,417 people (Table 2). The largest proportion of the employed resident population in these two LGAs is engaged in the mining industry. Their combined population of 52,820 people in June 2009 represented almost two thirds (64 per cent) of the total population of the region. Between 2001 and 2006, Queensland's population grew by an average of 2.5 per cent annually. Coinciding with the increase in mining employment in the region since 2001, Queensland's average annual population growth was equalled by the growth in Central Highlands (R) and exceeded by the growth in Isaac (R) (2.7 per cent) in the same period. Growth in Isaac (R) between 2008 and 2009 slowed to 1.9 per cent following a decline in mining activity in some areas.

The economies of Banana (S) and Whitsunday (R) - Bowen SLA are more diversified than those of Central Highlands (R) and Isaac (R), with more people employed in the agriculture, forestry and fishing industry than in mining. In 2009, the ERP of Whitsunday (R) - Bowen SLA (14,175 people) was the smallest of the four LGAs in the region, while Banana (S) had a slightly higher population (15,597 people). Between 2001 and 2006, growth in both LGAs was more moderate than in the other two LGAs in the region, with Banana (S) experiencing an average annual population decline (53 people) in the five-year period. Since 2006, both LGAs have recorded positive growth and in 2009, Whitsunday (R) - Bowen SLA increased its population by 417 people or 3.0 per cent. This exceeded the population increase of 410 people or 1.9 per cent in Isaac (R), where the population (22,417 people) was much larger. Recent developments in Whitsunday (R) - Bowen SLA include the opening of the Sonoma coal mine near Collinsville in May 2008, and the expansion of the port facilities at Abbot Point.

Table 2. Resident population estimates for Bowen Basin LGAs and Queensland, 2001 to 2009p, persons

| Local government area | Estimated resident population at 30 June | | | | | Average annual change, five years to June 2006 | | Annual change, year to June 2009 | |
|---------------------------|--|------------------|------------------|------------------|------------------|--|------------|----------------------------------|------------|
| | 2001 | 2006 | 2007r | 2008r | 2009p | no. | % | no. | % |
| Banana (S) | 15,838 | 15,572 | 15,382 | 15,481 | 15,597 | -53 | -0.3 | 116 | 0.7 |
| Central Highlands (R) | 25,061 | 28,256 | 28,772 | 29,343 | 30,403 | 639 | 2.4 | 1,060 | 3.6 |
| Isaac (R) | 18,524 | 21,113 | 21,543 | 22,007 | 22,417 | 518 | 2.7 | 410 | 1.9 |
| Whitsunday (R)* | 12,409 | 13,135 | 13,410 | 13,758 | 14,175 | 145 | 1.1 | 417 | 3.0 |
| Bowen Basin region | 71,832 | 78,076 | 79,107 | 80,589 | 82,592 | 1,249 | 1.7 | 2,003 | 2.5 |
| Queensland | 3,628,946 | 4,090,908 | 4,195,981 | 4,308,570 | 4,425,103 | 92,520 | 2.4 | 116,533 | 2.7 |

p - preliminary, r - revised

(R) - Regional Council, (S) - Shire

* Only the 2006 Census LGA of Bowen (S) is included. Whitsunday (S) is not in the Bowen Basin.

Source: ABS, *Regional population growth, Australia*, cat. no. 3218.0, online

Emerald is the largest SLA in the region, with an ERP of 17,300 people in June 2009 (Table 3). Reflecting its population size, Emerald SLA also had the largest population increase (682 people) of all SLAs during the year. Duaringa SLA had the fastest growth (4.9 per cent) in the region, well above that of Emerald SLA with 4.1 per cent. Duaringa's growth in the latest year was much faster than its average annual growth (1.8 per cent) over the five years to June 2006; however, Emerald SLA has grown consistently since 2001. In the intercensal period, its population increased by an average of 462 people annually, or 3.3 per cent. The urban centre of Emerald is an administrative and service centre for the region and provides a focus for wholesale, retail and tourist activities. Another SLA which experienced relatively large population growth in the year to June 2009 was Bowen. This SLA has a diversified economy based on agriculture, mining and tourism. In the year to June 2009, Bowen's population increased by 417 people or 3.0 per cent. Almost half of this increase occurred in the urban centre of Bowen, where the population increased by 199 people to reach 8,587 by the end of June 2009.

The Bowen Basin region is not as urbanised as Queensland as a whole. In June 2009, the population of all urban centres and localities in the region, excluding Woorabinda³, was 62,352. This represented 75 per cent of the total population of the Bowen Basin region (82,592 people) in 2009. By contrast, the proportion of Queensland's population which lived in urban centres and localities in 2009 was 88 per cent.⁴ There are some areas of the Bowen Basin region which have relatively high concentrations of urban population, such as the SLAs of Emerald and Duaringa. These two SLAs have large, fast growing urban centres accounting for a large share of the total population of the SLA. The urban centre of Blackwater, in Duaringa SLA, had an ERP of 5,420 people in 2009, representing three quarters (75 per cent) of the population of the SLA (Appendix A). Its annual growth in the year to June 2009, 5.0 per cent, was even faster than that of the SLA as a whole. The population of Emerald SLA was centralised in the urban centre of Emerald where 76 per cent of the SLA's population lived. The urban centre population was 13,118 people in 2009, an increase of 3.7 per cent over the previous year. This increase was slightly less than that of Emerald SLA (4.1 per cent) in the same period.

The urban centre with the third largest population increase during the year to June 2009, after Emerald (470 people) and Blackwater (259 people), was Moranbah, which is located in Belyando SLA. The population of Moranbah increased to 8,326 people during the year, an increase of 215 people or 2.7 per cent. In the five years to June 2006, Moranbah's population growth was even higher with an average annual increase of 254 people or 3.7 per cent. This growth rate was well above the state average (2.4 per cent), but not as high as other urban centres closely linked to the mining industry. These include Dysart with 6.0 per cent average annual growth between 2001 and 2006 and Glenden with 5.3 per cent growth. However, the intercensal population growth rates of both urban centres were based on much smaller populations than that of Moranbah in 2001. Dysart's population in 2001 was 2,500 and reached 3,444 by 2009. Glenden's population was only 909 people in 2001 and grew to 1,313 in 2009. In the latest year, Dysart's population declined by 0.1 per cent, while Glenden's population continued to grow strongly by 5.6 per cent (Appendix A).

Table 3. Resident population estimates for Bowen Basin SLAs and Queensland, 2001 to 2009p, persons

| Statistical local area | Estimated resident population at 30 June | | | | | Average annual change, five years to June 2006 | | Annual change, year to June 2009 | |
|---------------------------|--|------------------|------------------|------------------|------------------|--|------------|----------------------------------|------------|
| | 2001 | 2006 | 2007r | 2008r | 2009p | no. | % | no. | % |
| Banana | 15,838 | 15,572 | 15,382 | 15,481 | 15,597 | -323 | -0.3 | 116 | 0.7 |
| Bauhinia | 2,252 | 2,325 | 2,373 | 2,347 | 2,367 | 14 | 0.6 | 20 | 0.9 |
| Belyando | 9,948 | 11,149 | 11,402 | 11,629 | 11,876 | 247 | 2.3 | 247 | 2.1 |
| Bowen | 12,409 | 13,135 | 13,410 | 13,758 | 14,175 | 147 | 1.1 | 417 | 3.0 |
| Broadsound | 6,482 | 7,291 | 7,413 | 7,505 | 7,552 | 166 | 2.4 | 47 | 0.6 |
| Duaringa | 6,608 | 7,214 | 7,070 | 6,917 | 7,256 | 116 | 1.8 | 339 | 4.9 |
| Emerald | 13,056 | 15,334 | 15,917 | 16,616 | 17,298 | 462 | 3.3 | 682 | 4.1 |
| Nebo | 2,094 | 2,673 | 2,728 | 2,873 | 2,989 | 118 | 5.0 | 116 | 4.0 |
| Peak Downs | 3,145 | 3,383 | 3,412 | 3,463 | 3,482 | 51 | 1.5 | 19 | 0.5 |
| Taroom | 2,664 | 2,526 | n.a. | n.a. | n.a. | -28 | -1.1 | n.a. | n.a. |
| Bowen Basin region | 73,106 | 79,346 | 79,107 | 80,589 | 82,592 | 1,248 | 1.7 | 2,003 | 2.5 |
| Queensland | 3,628,946 | 4,090,908 | 4,195,981 | 4,308,570 | 4,425,103 | 92,520 | 2.4 | 116,533 | 2.7 |

p - preliminary, r - revised, n.a. - not available

Source: ABS, *Regional population growth, Australia*, cat. no. 3218.0, online

³ The urban centre of Woorabinda is located in the LGA of Woorabinda (S), which is not included in the economic area of the Bowen Basin region.

⁴ OESR, *Estimated resident population by urban centre and locality, Queensland 2001 to 2009p*, online

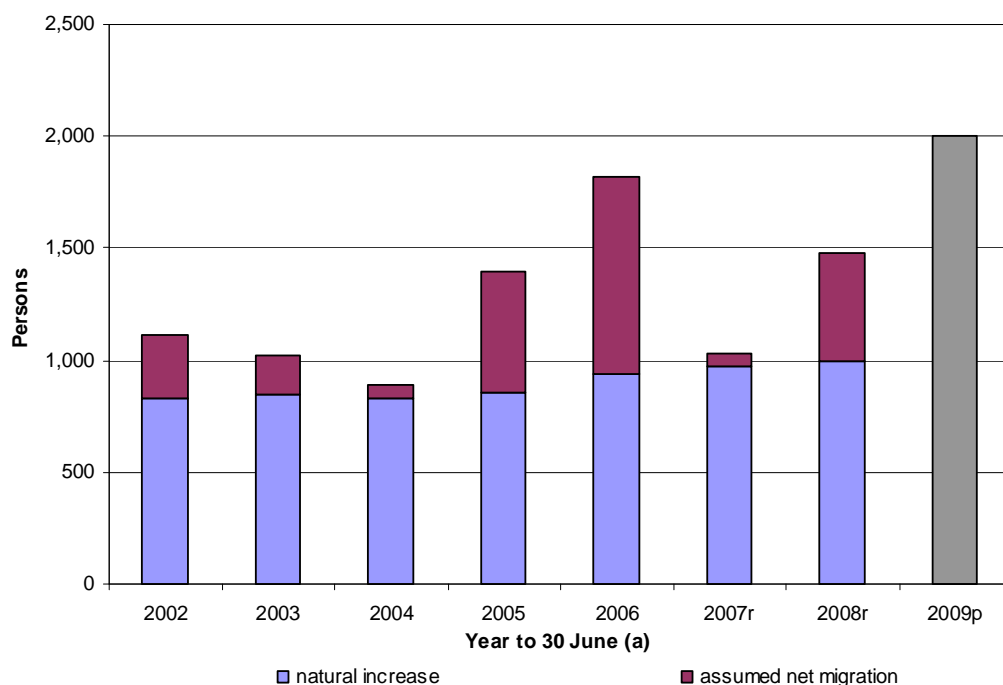
5.2 Components of population growth

The two drivers of population change are natural increase and net migration. Natural increase, which is the difference between the number of births and deaths, tends to be stable from year to year. On the other hand, net migration numbers can change considerably from year to year. At the state level, net migration is the sum of net overseas migration and net interstate migration. As the ABS does not calculate net migration at sub-state level, assumed net migration is often used to estimate population change due to migration in small areas. Assumed net migration is the difference between the total annual change in the ERP and the natural increase in the same period.

Population change in the Bowen Basin region resulting from natural increase and assumed net migration is shown in Figure 3. The volatility in assumed net migration is apparent, particularly during mining expansion in 2004–05 and 2005–06. It can be expected that assumed net migration numbers will also be high in 2008–09, when natural increase data becomes available for that year. Results from the 2009 Bowen Basin population report⁵ showed that the downturn in the mining industry following the global financial crisis did not significantly affect mining employment in the Bowen Basin. Although the number of non-resident workers decreased from 13,656 at 30 June 2008 to 12,228 at 30 June 2009, numbers in 2009 were higher than in 2006 or 2007. This suggests that net migration of workers and their families into the region in 2008–09 would have equalled or exceeded the number in 2007–08.

Figure 3 shows only the overall pattern of population change in the Bowen Basin region in the last decade. The individual LGA contributions to regional growth were quite different and reflect the pattern of population growth between 2001 and 2006 as shown in Table 2. In Central Highlands, Isaac and Whitsunday LGAs, natural increase and assumed net migration were positive in almost all years shown in Figure 3. In Banana (S), assumed net migration was negative in almost all years of the decade and natural increase was insufficient to offset the impact on population change. However, in 2008 and 2009, the ERP in Banana (S) increased as the result of a reduction in migration outflow. In Whitsunday (R) - Bowen SLA, annual natural increases between 30 and 60 people were outweighed in most years by assumed net migration of up to 300 people.

Figure 3. Components of annual population growth for Bowen Basin region, 2001–02 to 2008–09



p - preliminary, r - revised

(a) Data for natural increase and assumed net migration are not yet available for 2008–09.

Source: ABS, *Regional population growth, Australia* cat. no. 3218.0, online; ABS, unpublished data; OESR, unpublished data

⁵ OESR, *Bowen Basin population report, 2009*, online

5.3 Population projections

The population of the Bowen Basin region is projected to increase to 116,196 people by 2031, an increase of 38,000 from 2006 (PIFU, 2008 medium series projections). Table 4 shows that this projection represents an average annual increase of 1,522 people or 1.6 per cent. In the same period, Queensland's population is projected to increase by an average annual rate of 1.7 per cent, which equalled the average annual regional growth between 2001 and 2006. The high series projection represents a more rapid growth scenario driven largely by higher net migration, with an average annual growth of 2,230 people or 2.2 per cent. This growth rate is equal to the projected growth of Queensland as a whole between 2006 and 2031.

Note that the 2008 series projections were based on existing population trends and future developments in the region which would have an impact on future population growth. Emerging projects since 2008 will be considered in the next round of resident population projections, due in 2011. Also, resident population projections do not account for temporary population increases in the region which result from the influx of non-resident workers or short-term visitors such as tourists. The infrastructure and services required to support service populations in excess of the resident population can be significant in regional areas. In the Bowen Basin region in 2009, the non-resident population represented an additional 12,200 people to the resident population of 81,300, or about 13 per cent, excluding tourists and other short-term visitors.

Table 4. Projected resident population for Bowen Basin region, 2006 to 2031, persons

| Projection series | Year | | | | | | Average annual growth 2006–31 | |
|-------------------|---------------|---------------|---------------|----------------|----------------|----------------|-------------------------------|------------|
| | 2006 (a) | 2011 | 2016 | 2021 | 2026 | 2031 | no. | % |
| High | 78,146 | 89,303 | 100,465 | 111,467 | 122,414 | 133,896 | 2,230 | 2.2 |
| Medium | 78,146 | 86,499 | 94,315 | 101,785 | 108,942 | 116,196 | 1,522 | 1.6 |
| Low | 78,146 | 84,532 | 90,468 | 95,948 | 100,955 | 105,874 | 1,109 | 1.2 |

(a) Estimated resident population.

Source: ABS, *Regional population growth, Australia*, cat. no. 3218.0 (for 2006 ERP), online; Department of Infrastructure and Planning, *Queensland's future population, 2008 edition*, online

While the projected growth rate of the region to 2031 is equal to that of Queensland, there is considerable variation in the projected growth rates of the individual LGAs in the region. The LGAs with the largest mining workforces, Central Highlands (R) and Isaac (R), are projected to grow more quickly than Banana (S) and Whitsunday (R) - Bowen SLA (Table 5). Central Highlands and Isaac LGAs are expected to grow by 2.0 per cent annually between 2006 and 2031, based on the medium series projections. The average annual increase in Central Highlands (R) (745 people) over the 25 year period represents almost half (48 per cent) of the total projected increase in the regional population. Annual population growth in Whitsunday (R) - Bowen SLA will be moderate (1.2 per cent), while the population in Banana (S) will remain stable, with 0.3 per cent growth annually.

Table 5. Projected resident population for Bowen Basin region LGAs, 2006 to 2031 (2008 medium series), persons

| LGA | Year | | | | | | Average annual growth 2006–31 | |
|----------------------------|---------------|---------------|---------------|----------------|----------------|----------------|-------------------------------|------------|
| | 2006(a) | 2011 | 2016 | 2021 | 2026 | 2031 | no. | % |
| Banana (S) | 15,642 | 15,830 | 15,987 | 16,182 | 16,495 | 16,882 | 50 | 0.3 |
| Central Highlands (R) | 28,256 | 32,359 | 35,765 | 39,264 | 43,053 | 46,872 | 745 | 2.0 |
| Isaac (R) | 21,113 | 24,131 | 27,436 | 30,289 | 32,432 | 34,580 | 539 | 2.0 |
| Whitsunday (R) - Bowen SLA | 13,135 | 14,179 | 15,127 | 16,050 | 16,962 | 17,862 | 189 | 1.2 |
| Bowen Basin region | 78,146 | 86,499 | 94,315 | 101,785 | 108,942 | 116,196 | 1,522 | 1.6 |

(R) - Regional Council, (S) - Shire, SLA - Statistical local area

(a) Estimated resident population.

Source: ABS, *Regional population growth, Australia*, cat. no. 3218.0 (for 2006 ERP), online; Department of Infrastructure and Planning, *Queensland's future population, 2008 edition*, online

5.4 Non-resident workers

The issue of whether a person is identified as a usual resident of an area (and included in that area's resident population estimate) commonly leads to gross underestimates of population numbers and misinterpretation of census demographic data. Most confusion arises from a failure to distinguish the census usual residents estimate from the census counted population, which includes visitors and non-resident workers (see Glossary). Measures of the resident population refer only to the number of people who live in the local area for a period of six months or more in a given year. This definition excludes those who are present in the area for less than that period, whether for the purpose of tourism, visiting relatives or working in short-term employment. It also excludes people who live in the area while working, but commute to their usual place of residence in between shifts, i.e. those who drive in/drive out or fly in/fly out, commonly referred to as FIFO/DIDO workers (see Glossary).

Non-resident workers who drive in/drive out or fly in/fly out are most commonly found in the mining industry, where they form part of a workforce and accommodation strategy that incorporates extended shift rosters with temporary accommodation located close to the mine. This is the case in many areas of the Bowen Basin region. For example, in 2009 a total of 8,568 people or 28 per cent of the full-time equivalent population (see Glossary) of Isaac (R) were non-resident workers (Table 6). In Central Highlands (R), there were 2,682 non-resident workers, representing 8.3 per cent of the full-time equivalent population in 2009. Many of these workers have their usual place of residence in population centres such as Mackay, Gladstone or Rockhampton. In such cases, these workers would be included in the resident population estimate for their place of usual residence rather than in the Bowen Basin, according to whether they have identified this to be the case when completing their census form.

Table 6. Full-time equivalent (FTE) population for Bowen Basin LGAs, July 2009

| LGA | Resident population (estimated) | Number of non-resident workers | FTE population estimate | Non-resident workers as % of FTE |
|----------------------------|---------------------------------|--------------------------------|-------------------------|----------------------------------|
| Banana (S) | 15,497 | 726 | 16,223 | 4% |
| Central Highlands (R) | 29,607 | 2,682 | 32,289 | 8% |
| Isaac (R) | 22,186 | 8,568 | 30,754 | 28% |
| Whitsunday (R) - Bowen SLA | 13,988 | 252 | 14,240 | 2% |
| Bowen Basin region | 81,278 | 12,228 | 93,506 | 13% |

(R) - Regional Council, (S) - Shire, SLA - Statistical local area
Source: OESR, *Bowen Basin population report, 2009*, online

Construction workforces associated with large infrastructure and development projects also contain a large number of non-resident workers, who usually occupy commercial accommodation or are housed in worker camps⁶ located close to the work site. Although these workers live in the region for the duration of the project, most have a place of usual residence (and often dependants) that they regularly return to. As with mining workers, it is not always clear whether these workers have self-identified as residents during the Census, or form part of the non-resident worker population.

Some overseas visitors are non-resident workers, including guest workers sponsored under the 457 visa scheme and backpackers performing casual jobs. Holders of 457 visas (and their dependants) often live in Australia for a period of 12 months or more, sufficient to be recorded as a usual resident in the Census rather than as an overseas visitor. This, of course, is dependent on whether the worker is present in the area when the five-yearly Census is taken, and whether they correctly answered the question regarding residence on the census form.

On the other hand, backpackers are not included in resident population estimates as they are classified as overseas visitors along with other tourists. The horticultural industry in Bowen utilises both backpackers and 457 visa holders during the peak growing and picking season to supplement local and itinerant seasonal workers. Table 7 shows that the 2006 Census recorded just over 500 overseas visitors in Whitsunday (R) - Bowen SLA, with the majority (81 per cent) living in the town of Bowen and Bowen SLA Balance (17 per cent).

⁶ These camps are often referred to as single persons quarters (SPQs), which refers to the unit of accommodation rather than to the marital status of the occupant. Refer Glossary.

Table 7. Overseas visitors to Whitsunday (R) - Bowen SLA and localities, 2006, persons

| | Merinda | Collinsville | Bowen | Bowen SLA Bal. | Bowen SLA |
|-------------------|----------------|---------------------|--------------|---------------------------|------------------|
| Overseas visitors | 0 | 10 | 406 | 85 | 501 |
| Per cent of total | 0 | 2 | 81 | 17 | 100 |

(R) - Regional Council, SLA - Statistical local area

Source: ABS, 2006 Census, Table P01

The issue of distinguishing residents from non-resident workers and estimating their numbers becomes most acute in the five-year interval between census collections. Because the ERP in local areas can only be estimated from other sources⁷ during this period, changes to the population recorded in the last Census may not be adequately detected. Changes to the number of non-resident workers without dependants, particularly those staying in commercial accommodation, and overseas workers are not always adequately reflected in the intercensal ERP estimates.

⁷ The ABS models changes to the ERP during intercensal periods by referencing other data sources such as Medicare enrolment data, electoral roll address changes and dwelling approvals.

6. POPULATION PROFILE

6.1 Indigenous people

At the 2006 Census, the usually resident Indigenous population of the Bowen Basin region was 2,575 people, representing 4 per cent of the total population (Table 8). This was slightly higher than the equivalent proportion in Queensland (3 per cent). The non-Indigenous population was 64,929 or 89 per cent of the regional population. An additional 5,746 people or 8 per cent did not indicate their indigenous status. The LGA of Central Highlands (R) had the largest population (894 people) of Indigenous people, although the highest proportion was found in Whitsunday (R) - Bowen SLA (7 per cent). As 'not stated' responses exceeded the number of Indigenous people in all LGAs in the region, the actual proportion of Indigenous people in these areas cannot be stated with certainty.

Table 8. Usual resident population by Indigenous status, Bowen Basin LGAs and Queensland, 2006, proportion of the population

| Area | Indigenous | Non-Indigenous | Not stated | Total |
|----------------------------|------------|----------------|------------|-------------|
| Banana (S) | 3% | 92% | 5% | 100% |
| Central Highlands (R) | 3% | 90% | 7% | 100% |
| Isaac (R) | 2% | 87% | 10% | 100% |
| Whitsunday (R) - Bowen SLA | 7% | 84% | 10% | 100% |
| Bowen Basin region | 4% | 89% | 8% | 100% |
| Queensland | 3% | 91% | 6% | 100% |

(R) - Regional Council, (S) - Shire, SLA - Statistical local area

Source: ABS, 2006 Census, Table B07

6.2 Age and sex

The ERP of the Bowen Basin region at 30 June 2006 comprised 42,239 males (or 52 per cent of the total) and 35,907 females (or 48 per cent of the total) (Table 9). In comparison, Queensland had an equal share of males and females in 2006. The predominance of males in the Bowen Basin region, and particularly in the LGAs of Isaac (R) and Central Highlands (R), where 56 per cent and 54 per cent respectively of the population were males, reflects high male employment ratios in major industries such as mining, construction and agriculture.

Table 9. Estimated resident population by sex, Bowen Basin LGAs and Queensland, 30 June 2006

| Area | Males | | Females | | Persons | |
|----------------------------|------------------|-----------|------------------|-----------|------------------|------------|
| | no. | % | no. | % | no. | % |
| Banana (S) | 8,190 | 52 | 7,452 | 48 | 15,642 | 100 |
| Central Highlands (R) | 15,326 | 54 | 12,930 | 46 | 28,256 | 100 |
| Isaac (R) | 11,764 | 56 | 9,349 | 44 | 21,113 | 100 |
| Whitsunday (R) - Bowen SLA | 6,959 | 52 | 6,176 | 48 | 13,135 | 100 |
| Bowen Basin region | 42,239 | 52 | 35,907 | 48 | 78,146 | 100 |
| Queensland | 2,041,291 | 50 | 2,049,617 | 50 | 4,090,908 | 100 |

(R) - Regional Council, (S) - Shire, SLA - Statistical local area

Source: ABS, *Population by age and sex, Australia, 2006*, cat. no. 3235.0, online

The median age of the population of the Bowen Basin (33 years) was lower by three years than the state median age (36 years) in 2006 (Table 10). Age differences among LGAs in the region were marked in 2006. The LGAs with the largest mining industry, Central Highlands and Isaac, had the equal lowest median age (31 years), as a result of the predominance of young workers and their families in these two areas. In Banana (S) and Whitsunday (R) - Bowen SLA, the mining industry employs fewer people than in Central Highlands and Isaac LGAs, and agriculture, forestry and fishing is the main industry. Workers in this industry tend to be older than workers in other industries, and this was reflected in the higher median ages of both LGAs in 2006. In Whitsunday (R) - Bowen SLA, the median age was 41 years, well above the state median age.

A feature that distinguishes the age profile of the Bowen Basin region is the relatively low proportion of people aged 45 years and over. As Table 10 shows, most areas in the region have proportions of the population aged 45–64 years lower than the Queensland average (25 per cent), notably Central Highlands (R) and Isaac (R), both with 22 per cent. Also, these two LGAs and Banana (S) had proportions of the population aged 65–74 years and 75 years and over lower than the state averages in both age groups (7 per cent and 6 per cent respectively).

In Whitsunday (R) - Bowen SLA, people of retirement age (65 and over) make up around 14 per cent of the SLA population, compared with just 12 per cent for Queensland overall and 4 per cent in Isaac (R). Although 'sea changers' make up some part of this older population, the highest incidences of this age group occur in Bowen township (16 per cent) and Collinsville (15 per cent), rather than in the rural and coastal areas of Bowen SLA Balance (11 per cent). This suggests that older Bowen SLA residents seek to retire in the communities where they have lived and worked and where support services are located, in preference to rural residential options or new greenfield developments⁸.

Table 10. Estimated resident population by age group, Bowen Basin LGAs and Queensland, 30 June 2006, persons, and median ages, 2006 and 2031

| Area | Age group (years) | | | | | | | Median age (years) | | |
|----------------------------|-----------------------|-----------|-----------|-----------|----------|----------|------------|--------------------|-----------|-----------|
| | 0-14 | 15-24 | 25-44 | 45-64 | 65-74 | 75+ | Total | 2006 | 2031 | |
| | per cent (% of total) | | | | | | % | | | no. |
| Banana (S) | 24 | 13 | 30 | 24 | 6 | 4 | 100 | 15,642 | 35 | 37 |
| Central Highlands (R) | 25 | 15 | 33 | 22 | 3 | 2 | 100 | 28,256 | 31 | 36 |
| Isaac (R) | 25 | 13 | 35 | 22 | 2 | 1 | 100 | 21,113 | 31 | 33 |
| Whitsunday (R) - Bowen SLA | 19 | 12 | 25 | 29 | 8 | 6 | 100 | 13,135 | 41 | 45 |
| Bowen Basin region | 24 | 13 | 32 | 23 | 4 | 3 | 100 | 78,146 | 33 | 35 |
| Queensland | 20 | 14 | 29 | 25 | 7 | 6 | 100 | 4,090,908 | 36 | 41 |

(R) - Regional Council, (S) - Shire, SLA - Statistical local area

Source: ABS, *Population by age and sex, Australia*, cat. no. 3235.0, online; Department of Infrastructure and Planning, *Queensland's future population, 2008 edition*, online

⁸ DIP, Bowen Abbot Point Accommodation & Community Infrastructure Study 2009 (unpublished)

6.3 Total population projections

Although population ageing will cause an increase in median ages by 2031 across Queensland, the median age difference between the region and the state will increase over the 25 year period. By 2031, the age difference will have increased to five years, up from two years in 2006. Differences between the median ages of LGAs in the region in 2006 will still exist in 2031, although ageing will be more apparent in some LGAs than others. For example, the median age of the Isaac (R) population will increase only slightly to 33 years, but in the adjoining LGA of Central Highlands (R), the median age will increase from 31 to 36 years. These differences reflect the assumptions about the three components of population change (fertility, mortality and migration) applied to the base LGA populations at June 2006. Migration patterns may prove to be different in Central Highlands and Isaac LGAs, for example, older residents in Central Highlands may decide to retire in the regional centre of Emerald. On the other hand, some residents of Isaac LGA who migrated to the area for work may choose to retire to the coast or to Emerald. The cumulative effect of this scenario would be that the population of Central Highlands LGA would be older than that of Isaac LGA by 2031, as the median age projections show (Table 10).

Between 2006 and 2031, the population of the Bowen Basin region is projected to increase by almost half (49 per cent) from 78,146 to 116,196 people, based on the 2008 medium series projections (Table 11). The largest contributor to this increase will be Central Highlands (R), which will increase by 18,616 people from 28,256 in 2006 to 46,872 in 2031. Differing rates of population change over the 25 year period will alter the relative population size of the LGAs in the region. Relatively stable population change of 1,240 people in Banana (S) between 2006 and 2031 will result in it having the smallest population of the four regional LGAs.

Table 11. Estimated resident population, 2006 and projected population (medium series), 2011 to 2031, Bowen Basin LGAs and Queensland

| Area | ERP, 30 June 2006 | Projected population (medium series) | | | Total population change, 2006–2031 |
|----------------------------|-------------------|--------------------------------------|------------------|------------------|------------------------------------|
| | | 2011 | 2021 | 2031 | |
| Banana (S) | 15,642 | 15,830 | 16,182 | 16,882 | 1,240 |
| Central Highlands (R) | 28,256 | 32,359 | 39,264 | 46,872 | 18,616 |
| Isaac (R) | 21,113 | 24,131 | 30,289 | 34,580 | 13,467 |
| Whitsunday (R) - Bowen SLA | 13,135 | 14,179 | 16,050 | 17,862 | 4,727 |
| Bowen Basin region | 78,146 | 86,499 | 101,785 | 116,196 | 38,050 |
| Queensland | 4,090,908 | 4,567,713 | 5,478,715 | 6,273,885 | 2,182,977 |

(R) - Regional Council, (S) - Shire, SLA - Statistical local area

Source: ABS, *Population by age and sex, Australia*, cat. no. 3235.0, online; Department of Infrastructure and Planning, *Queensland's future population, 2008 edition*, online

Average annual population changes between 2006 and 2031 are projected to be largest between 2006 and 2011 in all LGAs except Banana (S) (Table 12). Population growth will ease as natural increase and net migration decline. As the population ages, the number of births will fall and the number of deaths will rise. Based on current expectations, in-migration is expected to slow also with workforce ageing. However, different policy settings could change in-migration numbers, for example, if the skilled migration intake were increased to meet labour shortages in resource areas.

Table 12. Projected population change (medium series), 2011 to 2031 and average annual change 2006 to 2031, Bowen Basin LGAs and Queensland

| Area | Projected population (medium series) | | | | |
|----------------------------|--|---------------|---------------|---|------------|
| | Average annual population change, five years to: | | | Average annual population change, 2006–2031 | |
| | 2011 | 2021 | 2031 | No. of persons | % |
| Banana (S) | 38 | 39 | 77 | 50 | 0.3 |
| Central Highlands (R) | 821 | 700 | 764 | 745 | 2.6 |
| Isaac (R) | 604 | 571 | 430 | 539 | 2.6 |
| Whitsunday (R) - Bowen SLA | 209 | 185 | 180 | 189 | 1.4 |
| Bowen Basin region | 1,671 | 1,494 | 1,451 | 1,522 | 1.9 |
| Queensland | 95,361 | 87,678 | 77,899 | 87,319 | 2.1 |

(R) - Regional Council, (S) - Shire, SLA - Statistical local area

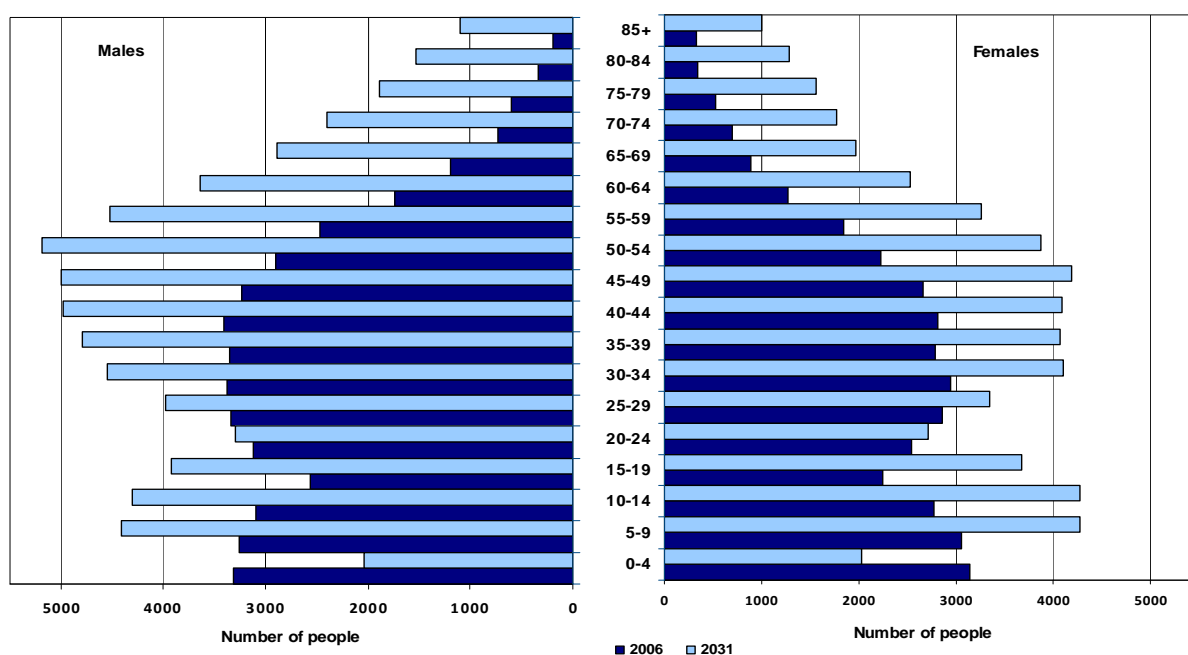
Source: ABS, *Population by age and sex, Australia*, cat. no. 3235.0, online; Department of Infrastructure and Planning, *Queensland's future population, 2008 edition*, online

6.4 Age/sex projections

The regional population is projected to age rapidly over the next two decades, mainly as a result of the large 'baby boomer' generation reaching retirement. As Figure 4 shows, the prominent cohort of people aged 30–44 years in 2006 will be replaced by an older cohort of 40–54 year olds in 2031. Because of the male/female imbalance in 2006, the region's older population in 2031 will continue to have higher numbers of males than females, who usually outnumber men in older age groups due to lower mortality rates.

Appendices B to F contain information on the 2008 medium series population projections for the Bowen Basin region.

Figure 4. Recent and projected age/sex profiles of Bowen Basin region, 2006 and 2031



Source: Department of Infrastructure and Planning, *Queensland's future population, 2008 edition*, unpublished data

6.5 Age dependency ratio

A consequence of population ageing in Bowen Basin region over the next two decades is that there will be a diminishing ratio of working age people (15–64 years) to people of non-working age (0–14 years and 65 years and over). This age dependency ratio is indicative of the number of people who are capable of providing support to those likely to be dependent on such support for daily living, namely young people and the elderly. Table 13 shows that the age dependency ratio for Bowen Basin region is projected to decline noticeably from 2.20 in 2006 to 1.96 in 2031. The most rapid decline will occur from 2011 (2.21) to 2021 (2.05) as the majority of the baby boomer generation passes into retirement. In all years to 2031, the age dependency ratio of the Bowen Basin is projected to be higher than the ratio for Queensland, which indicates that there are relatively more young children and retirees living elsewhere in the state.

Table 13. Recent and projected age dependency ratios for Bowen Basin region and Queensland, 2006 to 2031

| Year | Non-working age (a) | Working age (b) | Total population | Dependency ratio | |
|------|---------------------|-----------------|------------------|--------------------|------------|
| | | | | Bowen Basin region | Queensland |
| 2006 | 24,458 | 53,688 | 78,146 | 2.20 | 2.08 |
| 2011 | 26,934 | 59,564 | 86,498 | 2.21 | 2.06 |
| 2016 | 30,207 | 64,110 | 94,317 | 2.12 | 1.94 |
| 2021 | 33,386 | 68,396 | 101,782 | 2.05 | 1.83 |
| 2026 | 36,313 | 72,631 | 108,944 | 2.00 | 1.72 |
| 2031 | 39,225 | 76,973 | 116,198 | 1.96 | 1.63 |

(a) The non-working age category comprises people aged 0–14 years, and people aged 65 years and over.

(b) The working age category comprises people aged 15–64 years.

Source: Department of Infrastructure and Planning, *Queensland's future population, 2008 edition*, unpublished data

6.6 Educational attainment

In comparison to the Queensland average and other areas, Bowen Basin region has lower proportions of people with graduate and postgraduate qualifications. As Table 14 shows, only 15 per cent of people in the region aged 15 years and over stated a bachelor degree or higher qualification in 2006, compared with 24 per cent for Queensland overall. The attainment rate for advanced diploma qualifications (10 per cent) was also lower than that for Queensland (15 per cent). However, the rate for persons with certificates in the region (44 per cent) was higher than the corresponding rate for Queensland (36 per cent), which is to be expected given the large number of trade-qualified people and certified machinery operators working in the mining industry in the region. The shares of people in the categories of non-school qualifications shown in Table 14 should be interpreted carefully because of the high proportion (30 per cent) of inadequately described and not stated responses to the census question.

Table 14. Population aged 15 years and over by non-school qualification, Bowen Basin LGAs and Queensland, 2006

| Area | Bachelor degree or higher | Graduate or advanced diploma | Certificate | Inadequately described / not stated | Total |
|----------------------------|---------------------------|------------------------------|-------------|-------------------------------------|------------------|
| | | | | | no. |
| % of total | | | | | |
| Banana (S) | 17 | 12 | 45 | 26 | 4,398 |
| Central Highlands (R) | 16 | 11 | 47 | 25 | 9,232 |
| Isaac (R) | 16 | 9 | 44 | 31 | 7,316 |
| Whitsunday (R) - Bowen SLA | 10 | 9 | 38 | 43 | 4,374 |
| Bowen Basin region | 15 | 10 | 44 | 30 | 25,320 |
| Queensland | 24 | 15 | 36 | 25 | 1,560,868 |

(R) - Regional Council, (S) - Shire, SLA - Statistical local area

Source: ABS, 2006 Census, Table B39

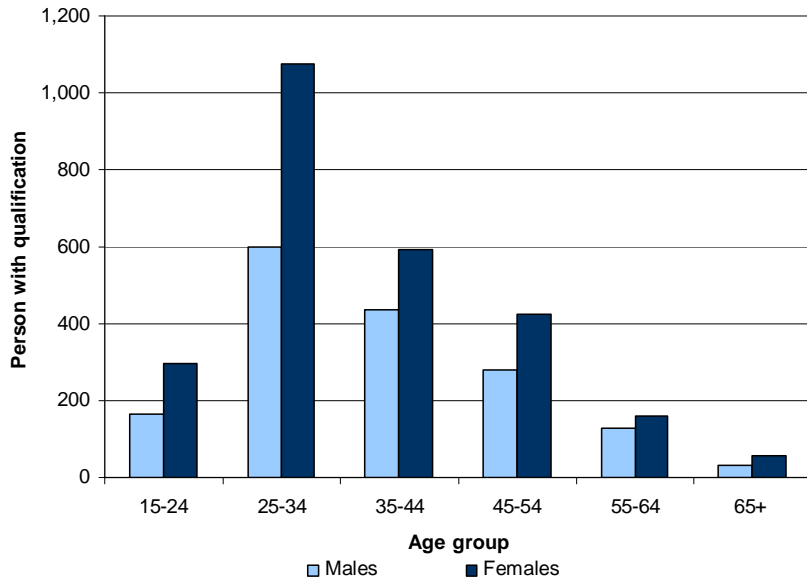


Figure 5. Persons with bachelor degree or higher by age and sex, Bowen Basin region, 2006

Females with a bachelor degree or higher qualification outnumbered males in all age groups (Figure 5). Younger people aged 25–34 years represented the largest age group (1,675 people) with qualifications in this category, followed by people in the 35–44 years age bracket (1,029 people). In total, 4,244 people (2,602 females and 1,642 males) held a bachelor degree or higher in Bowen Basin region in 2006.

Figure 6. Persons with diploma by age and sex, Bowen Basin region, 2006

Females with graduate diploma qualifications outnumbered males in all age groups (Figure 6). Mid-working age people (35–44 years) represented the largest age group (611 people) with qualifications in this category, followed by people in the 25–34 years and 45–54 years age brackets (546 and 532 people respectively). In total, 2,268 people (1,345 females and 923 males) held a diploma in Bowen Basin region in 2006.

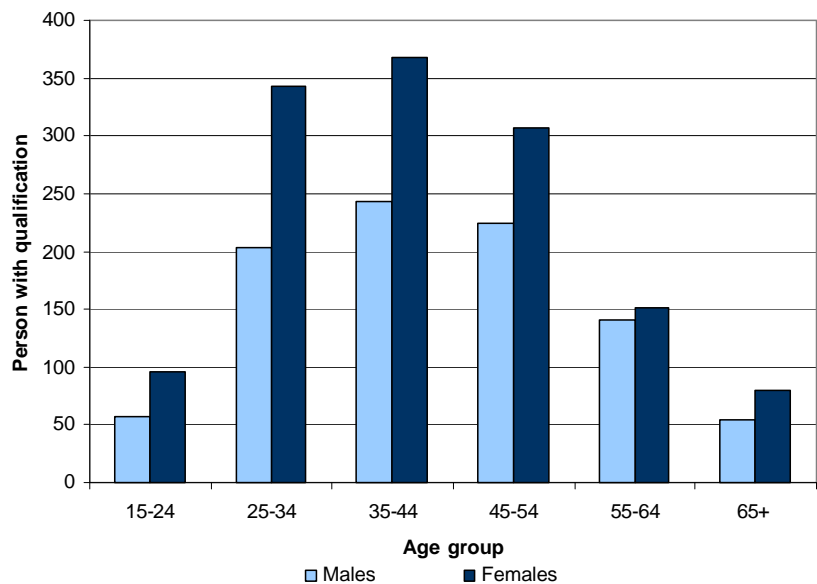
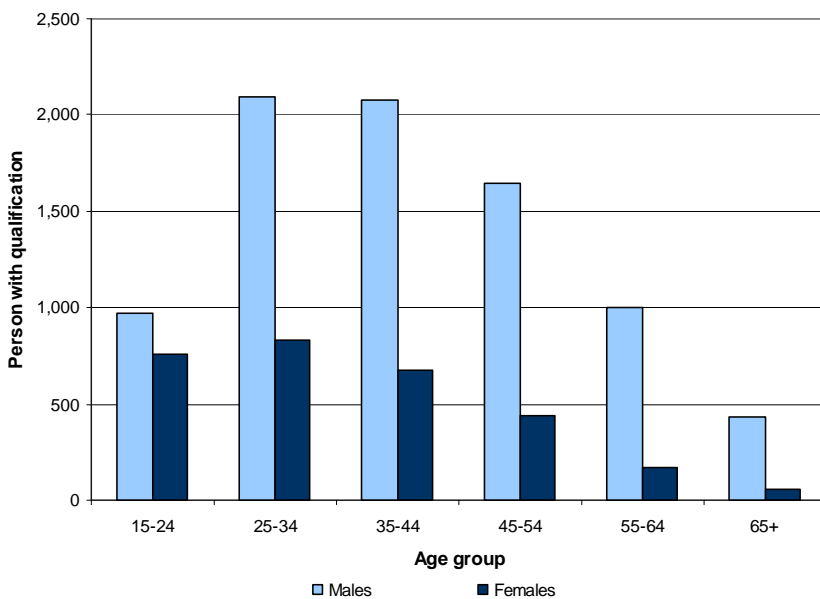


Figure 7. Persons with certificate by age and sex, Bowen Basin region, 2006

Males with certificate qualifications outnumbered females in all age groups (Figure 7). Younger working age people (25–34 years) made up the largest age category (2,925 people), followed closely by the 35–44 years age group (2,750 people). A total of 11,144 people (8,218 males and 2,926 females) held a certificate level qualification in Bowen Basin region in 2006.



Source for Figures 5–7: ABS, 2006 Census, Table B39

6.7 Household and family structure

Family households represent a slightly higher proportion of household types in Bowen Basin region than in other areas of Queensland. Table 15 shows that almost three quarters (74 per cent) of classifiable households recorded by the 2006 Census in Bowen Basin region were family households, whereas the Queensland average was 72 per cent.

Non-family households, particularly lone person households, made up just less than one quarter (23 per cent) of all households in the region in 2006. The proportion of lone person households in Whitsunday (R) - Bowen SLA (29 per cent) was noticeably higher than in other LGAs. Several factors contributed to the high representation of lone person households in Whitsunday (R) - Bowen SLA:

- the high number of unaccompanied singles employed in the mining and construction industries;
- single young people employed as workers in the agricultural industry, including guest workers on the 457 Visa scheme; and
- an ageing population, whereby older people are more likely to be the sole survivor of a former family household.

Table 15. Proportion of family and non-family households in Bowen Basin LGAs and Queensland, 2006

| Area | Family households (a) | Non-family households | | Classifiable households (b) |
|----------------------------|-----------------------|------------------------|------------------|-----------------------------|
| | | Lone person households | Group households | |
| Banana (S) | 73% | 24% | 2% | 5,846 |
| Central Highlands (R) | 75% | 21% | 4% | 9,728 |
| Isaac (R) | 77% | 20% | 3% | 6,960 |
| Whitsunday (R) - Bowen SLA | 68% | 29% | 3% | 5,000 |
| Bowen Basin region | 74% | 23% | 3% | 27,534 |
| Queensland | 72% | 24% | 4% | 1,515,899 |

(R) - Regional Council, (S) - Shire, SLA - Statistical local area

(a) Family households include couple with children, couple without children, one parent family and multiple family household categories.

(b) Classifiable households exclude not classifiable and not stated households.

Source: OESR, *Household and dwelling projections, Queensland local government areas 2009*, online

6.8 Household projections

Based on projected population growth and household formation patterns, the Bowen Basin region is likely to have around 45,800 households by 2031, an increase of 16,600 households from 2006. While much of this anticipated change will occur as a result of more people living in the region, the rate of household growth will actually exceed the population growth rate, since many future households will be smaller than at present. The population of the Bowen Basin region is projected to increase by around 49 per cent between 2006 and 2031 (PIFU, 2009), but the percentage increase in household numbers will be considerably higher (57 per cent). The ageing of the Australian population will ensure the continuation into the foreseeable future of the trend for smaller household size, as older persons tend to live in smaller households.

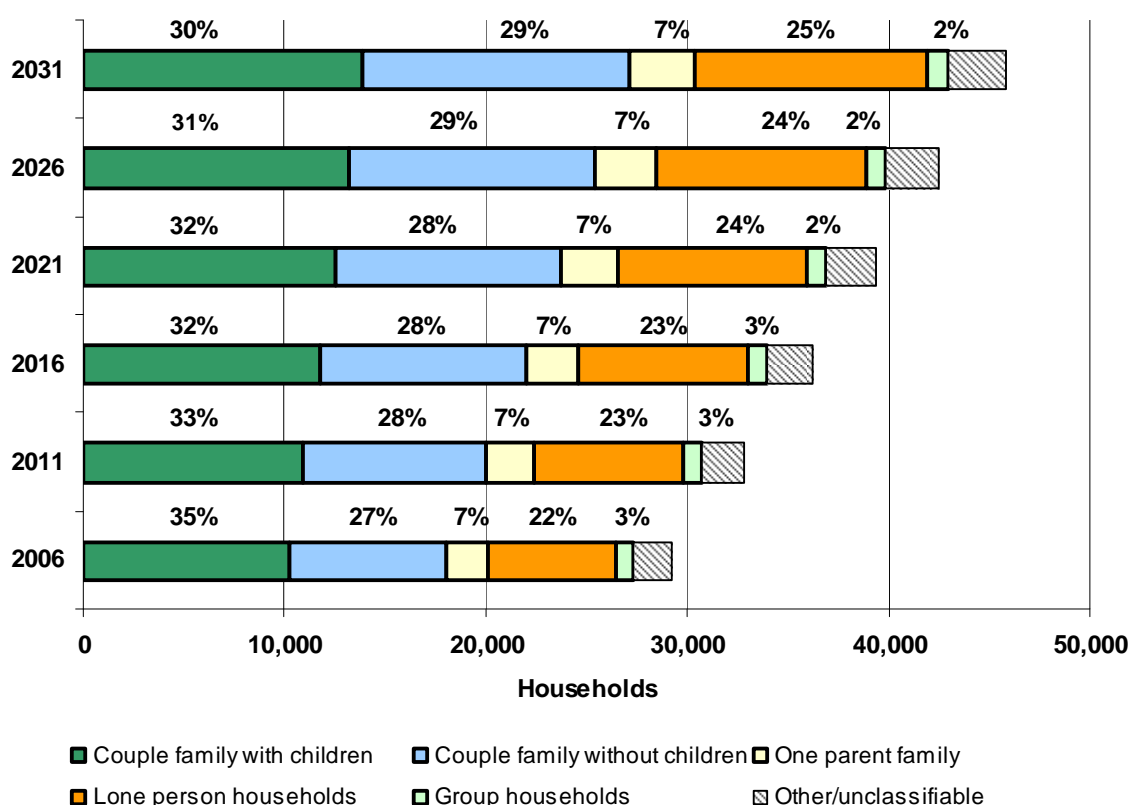
The size of the average Australian household has been declining for almost a century, from around 4.5 persons per household in 1911 to just 2.6 persons per household in 2006. This decline is thought to result from a number of influences, ranging from societal change, population ageing, declining fertility rates and increasing life expectancy, as well as temporary anomalies in household formation. The growing incidence of some household types, including lone person, couple without children and one parent with children households, may be partly attributed to distinctive shifts in the nature of relationships. Changing attitudes to social roles, along with liberalisation of legal arrangements regarding marriage, divorce and parenthood, have contributed to an increasing incidence and acceptance of living arrangements that differ from traditional family relationships.

On a local level, the population decline experienced by Bowen Basin region between 1996 and 2001 included large numbers of young family households with children. While these population losses have been recovering since 2001 due to positive net migration, most of the recent growth in the region has been in the number of couple families with no children, non-family households and other households including visitor only households. By 2006 the number of couple without children households (7,859) and lone person households (6,354) in Bowen Basin region exceeded the number of couple with children households (10,211).

Building on these past influences, population ageing will contribute most to the increasing prevalence of smaller households in the future (Figure 8). The population of the Bowen Basin region is growing older, with many of the large 'baby boomer' generation (born 1946–1965) now moving into retirement. This group will exert a strong influence on changing household patterns, as subsequent cohorts will be smaller in size due to low fertility rates over the last three decades of life. Older couple without children households—so-called 'empty nesters'—will become more prevalent as baby boomer families mature, and their adult children leave home. Over time, most of these older households will evolve into lone person households following the death of one partner. With improved life expectancy due to better health care, the region will contain more aged but smaller households by 2031 than ever before.

As Figure 8 illustrates, families with children represent a shrinking proportion of all households in Bowen Basin region. By 2031, couple with children households and one parent with children households will make up only 30 per cent of all households, down from 35 per cent in 2006. More than half of all households in the region in 2031 are likely to be lone person households (25 per cent) or couple without children households (29 per cent).

Figure 8. Projected household growth and change in household types, Bowen Basin region, 2006 to 2031



Source: OESR, *Household and dwelling projections, Queensland local government areas 2009*, online

Table 16 shows that couple without children households (5,477, or 70 per cent) are projected to have the largest growth, followed by lone person households (5,139, or 81 per cent) between 2006 and 2031.

Table 16. Projected household growth by household type, Bowen Basin region, 2006 to 2031

| Household type | 2006 | 2011 | 2016 | 2021 | 2026 | 2031 | Change, 2006–31 |
|--------------------------------|---------------|---------------|---------------|---------------|---------------|---------------|-----------------|
| Couple family with children | 10,211 | 10,935 | 11,737 | 12,490 | 13,195 | 13,810 | 35% |
| Couple family without children | 7,859 | 9,124 | 10,242 | 11,226 | 12,217 | 13,336 | 70% |
| One parent family | 2,022 | 2,343 | 2,619 | 2,834 | 3,057 | 3,251 | 61% |
| Lone person | 6,354 | 7,416 | 8,444 | 9,452 | 10,412 | 11,493 | 81% |
| Group | 847 | 876 | 906 | 941 | 1,011 | 1,093 | 29% |
| Other/unclassifiable | 1,920 | 2,098 | 2,287 | 2,464 | 2,656 | 2,832 | 48% |
| Total | 29,213 | 32,792 | 36,235 | 39,407 | 42,548 | 45,815 | 57% |

Source: OESR, *Household and dwelling projections, Queensland local government areas 2009*, online

7. SOCIO-ECONOMIC PROFILE

7.1 Median incomes

Overall median income levels for most areas of the Bowen Basin region in 2006 were above those for Queensland, although they were lower in Whitsunday (R) - Bowen SLA (Figure 9). While the median income indicates the relative earning power of individuals and households, it is also affected by factors relating to the age distribution of the area, the number of income earners in each household and how their income is derived. So the relatively low median incomes in Bowen SLA are not only indicative of its large 'blue collar' workforce, but also of its age and household structure.

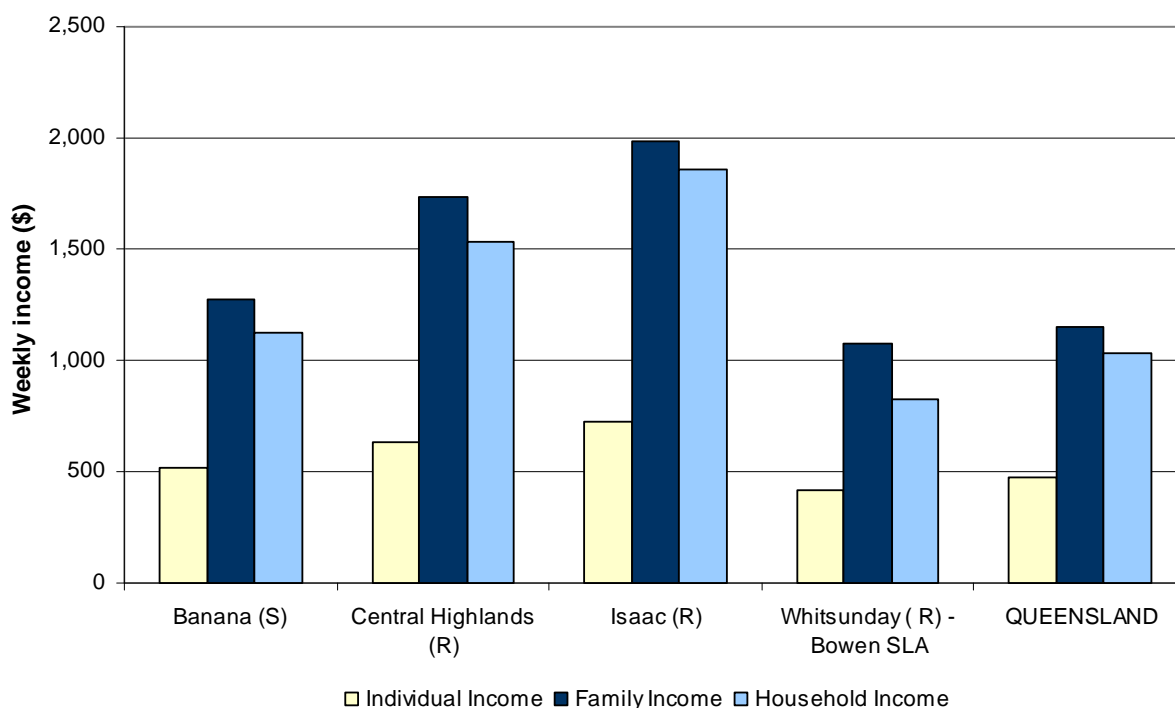
The median individual income for Bowen SLA in 2006 was \$417 per week, lower than the Queensland average of \$476 and considerably lower than the medians for Banana (S) (\$518), Central Highlands (R) (\$635) and Isaac (R) (\$722). Despite having a large population of well-paid miners in Collinsville, Bowen SLA had a much older population than other areas in the region. Its median age in 2006 was 41 years, compared with 33 years for the region as a whole. Areas such as Bowen SLA, which have a high proportion of people who are not in the labour force, also have large proportions of their population earning their primary income from benefits such as the Age Pension or Newstart Allowance. These areas are more likely to have a low median individual income than those with a young working population. As a result, the high number of retirees in Bowen SLA with low incomes outnumbers the high number of well-paid coal miners, forcing the area's median income downward.

Median household incomes are also influenced by the number of earners in the household. With the highest proportion (26 per cent) of lone person households in the region⁹, Bowen SLA is less likely to have a similar incidence of dual income households than areas with younger populations. As a result, Bowen's median household income of \$826 was lower than for Queensland (\$1,033) and well below that of Banana (S) (\$1,121), Central Highlands (R) (\$1,535) and Isaac (R) (\$1,859), where dual income families are much more prevalent.

As it excludes lone person and group households, the median family income measure is a better indicator of comparative earnings than household or individual incomes, although it does include couple without children households who could be age pensioners. Nevertheless, the median household income for Bowen (\$1,077 per week) in 2006 was still below the state average (\$1,154) and those of the other LGAs in the region: Banana (S) (\$1,279), Central Highlands (R) (\$1,732) and Isaac (R) (\$1,980).

⁹ OESR, *Household and dwelling projections, Queensland local government areas 2009*, online

Figure 9. Median individual, household and family incomes, Bowen Basin LGAs and Queensland, 2006



(R) - Regional Council, (S) - Shire, SLA - Statistical local area

Source: ABS, 2006 Census, Table B02

7.2 Weekly family incomes

Figure 10 illustrates the comparative distribution of households according to family income for LGAs in the Bowen Basin region in 2006.

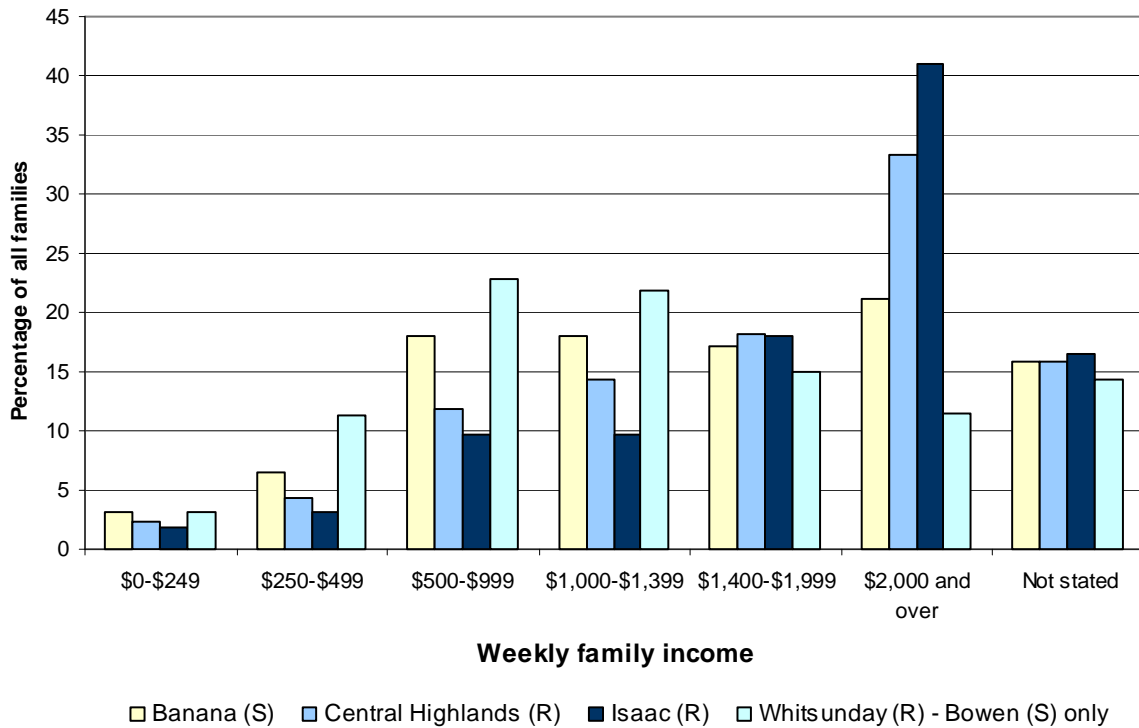
Whitsunday (R) - Bowen SLA had a relatively high proportion of family households earning \$250–\$499 per week compared with the other areas, due largely to its high population of retired couple without children households. More importantly, Bowen SLA also dominated in the next income category (\$500–\$999 per week), which mainly contains working family households. Several influences are likely to have contributed to this result:

- the number of households receiving low wages for unskilled jobs;
- a high number of households dependent upon one income, or on one income supplemented by a part-time income or benefit; and
- a large number of households where one or more incomes are part-time or seasonal in nature.

The \$1,000–\$1,399 per week category was also the largest for Bowen SLA, with the proportion of households in this group (22 per cent) more than twice the proportion in Isaac (R) (10 per cent). The proportions in the next income group, \$1,400–\$1,999, were similar in all four LGAs, reflecting the presence of dual income families in all areas.

Considerable variation between areas was evident, however, in the proportion of high income households (\$2,000 per week and above), with Bowen SLA falling behind the other areas by between 9 and 29 per cent. The large representation of households in this income bracket in Central Highlands and Isaac LGAs is largely due to the high proportion of dual income families, as well as higher individual incomes.

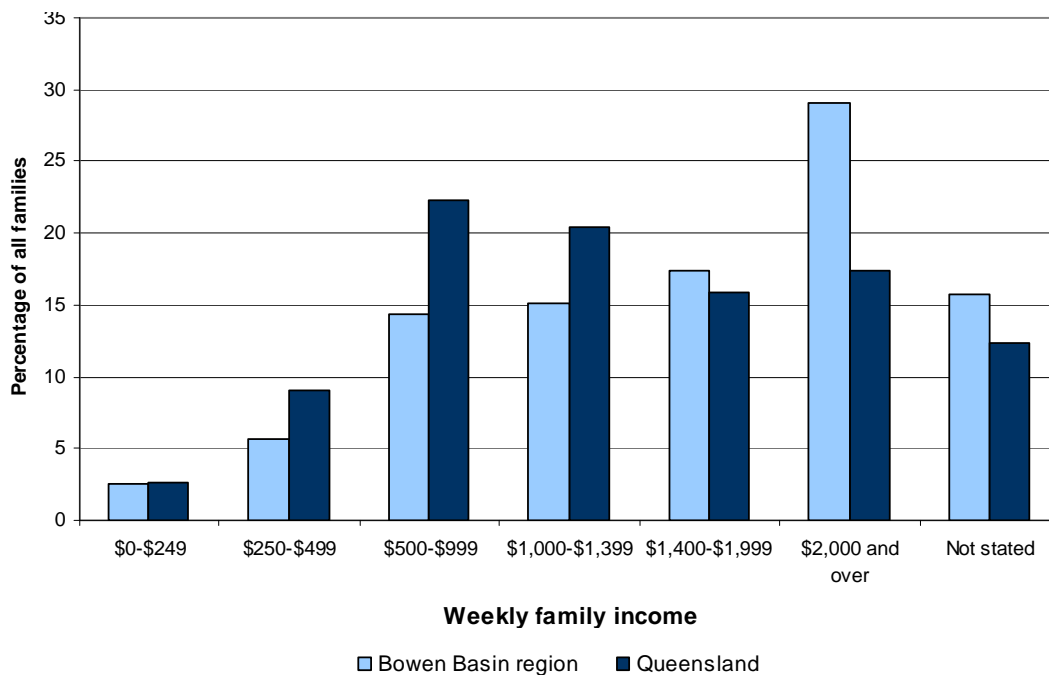
Figure 10. Weekly family income, Bowen Basin LGAs, 2006



(R) - Regional Council, (S) - Shire, SLA - Statistical local area
 Source: ABS, 2006 Census, Table B26

Figure 11 illustrates the comparative distribution of households according to family income for the Bowen Basin region and Queensland in 2006. It shows that family incomes in the region were higher than elsewhere in Queensland as the proportion of Bowen Basin families was higher than the Queensland average for weekly income categories of \$1,400 or more.

Figure 11. Weekly family income, Bowen Basin region and Queensland, 2006



Source: ABS, 2006 Census, Table B26

7.3 Socio-economic advantage/disadvantage

The Socio-Economic Indexes for Areas (SEIFA Indexes) are summary measures of the comparative socio-economic status of an area, based on a component analysis of relevant variables. The SEIFA Index of Relative Advantage/Disadvantage assumes that people living in areas of relative disadvantage are less likely to have access to material and social resources than people living in a relatively advantaged area. The converse also holds true, in that areas with high SEIFA scores are considered to be relatively advantaged.

A low score in the SEIFA Index of Relative Advantage/Disadvantage indicates that the area has a higher proportion of households with characteristics related to disadvantage, such as low income, low education, unskilled jobs, and lone person or single parent households. A high score indicates that the area has a low incidence of people with characteristics associated with disadvantage, such as higher incomes, skilled and professional jobs, tertiary education, larger houses, and internet access.

Table 17 shows that Whitsunday (R) - Bowen SLA had the lowest SEIFA score (904) of all SLAs in the Bowen Basin region in 2006, ranking it as the 57th most disadvantaged area out of the 157 LGAs within Queensland. By contrast, SLAs such as Emerald (S) and Broadsound (S) have SEIFA scores above 1000. These areas were in the 10th decile, which means that they were in the top 10 per cent of the distribution of LGA SEIFA scores. Outside the Bowen Basin region, Gladstone (979), Mackay (992), Rockhampton (945) and Townsville (1004) were more advantaged than some SLAs in the region, such as Bowen, although less advantaged than Belyando SLA, which had a SEIFA score of 1025 and a ranking of 152. Brisbane City had the highest ranking (157) of all areas in Queensland in 2006.

Table 17. Index of socio-economic advantage/disadvantage, pre-reformed LGAs in the Bowen Basin and other LGAs, 2006

| Local government area | Pre-reformed local government area | SEIFA score | Queensland ranking | |
|-----------------------|------------------------------------|-------------|--------------------|--------|
| | | | SLA ranking | Decile |
| Banana (S) | Banana (S) | 958 | 122 | 8 |
| Central Highlands (R) | Bauhinia (S) | 965 | 124 | 8 |
| Central Highlands (R) | Duarina (S) | 991 | 136 | 9 |
| Central Highlands (R) | Emerald (S) | 1,013 | 147 | 10 |
| Central Highlands (R) | Peak Downs (S) | 1,023 | 150 | 10 |
| Isaac (R) | Belyando (S) | 1,025 | 152 | 10 |
| Isaac (R) | Broadsound (S) | 1,001 | 143 | 10 |
| Isaac (R) | Nebo (S) | 991 | 137 | 9 |
| Whitsunday (R) | Bowen (S) | 904 | 57 | 4 |
| Mackay (R) | Mackay (C) | 992 | 138 | 9 |
| Gladstone (R) | Gladstone (C) | 979 | 130 | 9 |
| Rockhampton (R) | Rockhampton (C) | 945 | 109 | 7 |
| Townsville (C) | Townsville (C) | 1,004 | 145 | 10 |

(C) - City, (R) - Regional Council, (S) - Shire

Source: ABS, *Census of Population and Housing: Socio-Economic Indexes for Areas (SEIFA), Australia - data only, 1996*, cat. no. 2033.0.55.001, online

8. HOUSING AND ACCOMMODATION

8.1 Housing types

Table 18 shows that separate houses made up 86 per cent of private dwellings in Bowen Basin region in 2006, slightly above the Queensland average of 80 per cent but below the proportions in the LGAs of Rockhampton (88 per cent) and Gladstone (87 per cent). The numbers in this table are based on a count of occupied private dwellings at the 2006 Census, excluding those occupied by visitor only households and non-classifiable households.

The SLA of Whitsunday (R) - Bowen has a more diverse mix of housing types than other areas in the region. In 2006, it had the lowest proportion (75 per cent) of separate houses in the region, but the highest proportions of semi-detached, row or terrace houses, and townhouses (11 per cent) and flats, units and apartments (7 per cent). It also had a slightly higher proportion (5 per cent) of caravans, cabins and houseboats than the regional average (4 per cent). The high number of dwellings other than separate houses in the area reflects the need to accommodate seasonal workers and visitors, including tourists and non-resident workers. The private dwelling category also includes self-contained retirement villages. The size of the visitor component of private dwelling occupancy in Bowen SLA is indicated by the difference between the number of private dwellings excluding visitor only and non-classifiable households (4,441) and the total number of private dwellings (6,343) in 2006. Visitor only and non-classifiable households comprised 30 per cent of all households in private dwellings in 2006.

Away from the coastal areas of Bowen SLA, separate houses represent the dominant dwelling type in the region. In the inland LGAs of Banana, Central Highlands and Isaac, the proportions of separate houses ranged from 87 to 90 per cent, well above the state average of 80 per cent. In more densely settled areas of Queensland, units and townhouses are more common than in the Bowen Basin region. Conversely, caravans, cabins and houseboats represent a much lower proportion (1 per cent) of occupied private dwellings across the state than in the Bowen Basin (4 per cent). The prevalence of these dwellings is the result of the demand for suitable accommodation to house non-resident workers during their rostered stay in the region and also the demand for cheaper accommodation by low-income permanent residents.

Table 18. Count of occupied dwellings (a) and proportion of occupied dwellings by structure, Bowen Basin LGAs, other LGAs and Queensland, 2006

| Area | Separate houses | Semi-detached, row or terrace houses, townhouses etc. | Flats, units or apartments | Caravans, cabins, houseboats | Improvised homes, tents, sleepers out | Other, not stated | Total occupied private dwellings |
|----------------------------|-----------------|---|----------------------------|------------------------------|---------------------------------------|-------------------|----------------------------------|
| Banana (S) | 90% | 2% | 5% | 2% | 0% | 1% | 5,174 |
| Central Highlands (R) | 87% | 2% | 6% | 4% | 1% | 0% | 8,547 |
| Isaac (R) | 90% | 1% | 3% | 4% | 0% | 0% | 5,977 |
| Whitsunday (R) - Bowen SLA | 75% | 11% | 7% | 5% | 1% | 1% | 4,441 |
| Bowen Basin region | 86% | 3% | 5% | 4% | 1% | 0% | 24,139 |
| Mackay (R) | 84% | 4% | 9% | 2% | 1% | 0% | 33,970 |
| Gladstone (R) | 87% | 2% | 7% | 2% | 1% | 0% | 17,401 |
| Rockhampton (R) | 88% | 3% | 7% | 2% | 0% | 0% | 35,397 |
| Townsville (C) | 81% | 4% | 13% | 1% | 0% | 0% | 53,459 |
| Queensland | 80% | 8% | 11% | 1% | 0% | 0% | 1,391,632 |

(C) - City, (R) - Regional Council, (S) - Shire, SLA - Statistical local area

(a) Excludes visitors only and other non-classifiable households.

Source: ABS, 2006 Census, Table B31

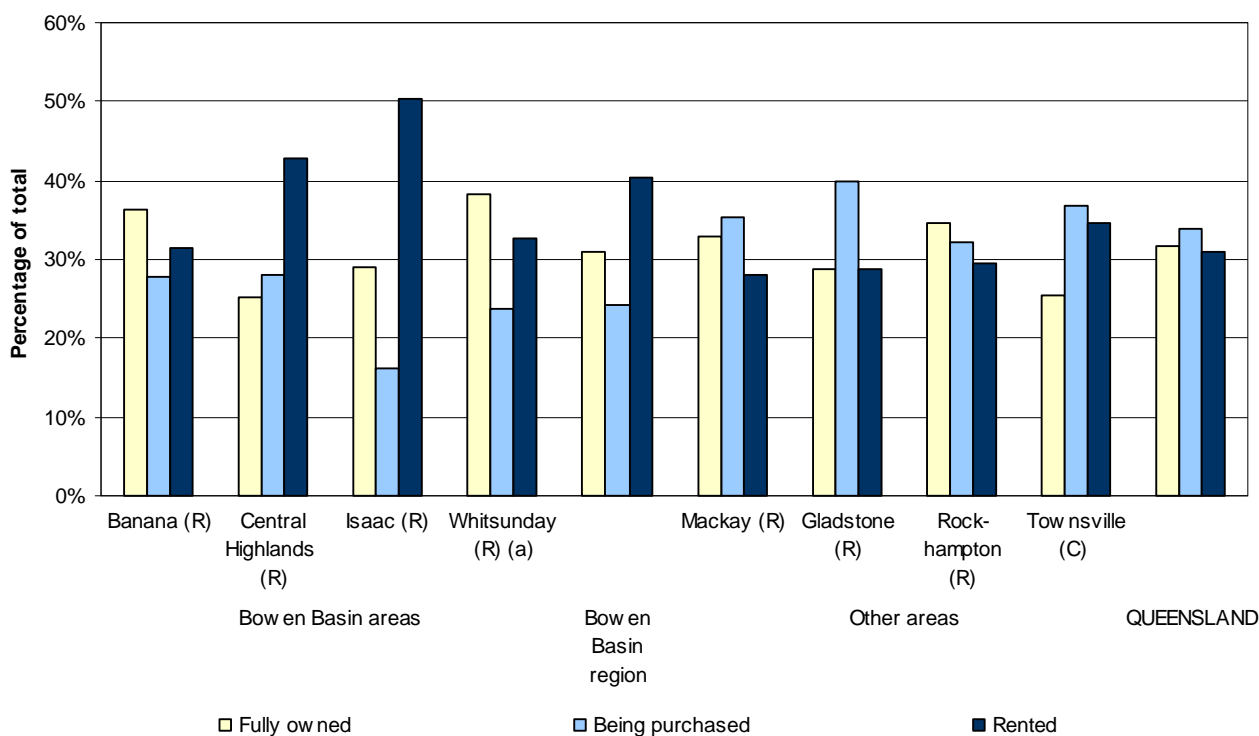
8.2 Housing tenure

One feature of private housing tenure in the Bowen Basin region is the high incidence of outright home ownership in the SLA of Whitsunday (R) - Bowen SLA and in Banana (S). As Figure 12 shows, some 38 per cent of private dwellings were owned outright in 2006 in Bowen SLA, a high rate compared with Queensland overall (32 per cent) and also the LGAs of Gladstone (R) (29 per cent) and Townsville (C) (25 per cent). Home ownership was also relatively high in Banana (S), where the rate was 36 per cent. Overall, the proportion of homes owned outright in the region (31 per cent) was similar to the state proportion.

On the other hand, the proportion of dwellings being purchased was much lower for the Bowen Basin region (24 per cent) than for Queensland (34 per cent) and also other LGAs such as Gladstone (R) (40 per cent). Within the region, the proportion of dwellings being purchased was lowest in Isaac (R) (16 per cent). This pattern of high outright home ownership and low rates of housing being purchased is consistent with a mature age population and low market activity.

Rentals account for 40 per cent of tenures in Bowen Basin region. This is much higher than for Queensland overall (31 per cent) and LGAs such as Mackay (R) (28 per cent). In Isaac (R), half of all private dwellings are rented. In Central Highlands (R), 43 per cent of dwellings are rented. Many dwellings in these areas are rented to mining workers as part of a rental arrangement with their employer. For example, of the 3,009 dwellings rented in Isaac (R) at the time of the 2006 Census, 2,066 or more than two thirds (69 per cent) were rented from employers. In Central Highlands (R), the corresponding proportion was 44 per cent.

Figure 12. Housing tenure in Bowen Basin LGAs, other LGAs and Queensland, 2006



(C) - City, (R) - Regional Council, (S) - Shire
(a) Bowen SLA.

Source: ABS, 2006 Census, Table B32

8.3 Weekly rents

The cost of renting in the Bowen Basin region is significantly lower than for Queensland overall. In 2006, the median weekly rent for Isaac (R) and Central Highlands (R) was \$61 and \$91 respectively, compared with the state average of \$200 per week. Median weekly rents were also comparatively low for Banana (S) (\$109) and Whitsunday (R) - Bowen SLA (\$135). Table 19 shows that weekly rents for the region are lower on average than for Queensland as a whole. In the region, 68 per cent of dwellings have rents of less than \$140, compared with 25 per cent of Queensland dwellings. It should be pointed out that these low rents are likely to be associated with the high incidence of caravans, cabins and houseboats, and improvised dwellings and tents, particularly those in rural areas.

Another factor contributing to low weekly rents, particularly in Central Highlands (R) and Isaac (R), are the generous housing subsidies paid to mining workers, rather than the availability of cheap rental housing in the area. This is demonstrated by the comparatively high proportion (5 per cent) of dwellings in Isaac (R) for which the weekly rent paid was \$550 or more. This proportion was matched only by the Queensland average (5 per cent), which is influenced by the higher rents charged in metropolitan areas and for holiday accommodation in tourist areas.

Table 19. Private dwellings by weekly rent for Bowen Basin LGAs, other LGAs and Queensland, 2006

| Area | \$0-\$49 | \$50-\$99 | \$100-\$139 | \$140-\$179 | \$180-\$224 | \$225-\$349 | \$350-\$549 | \$550 and over | No. of dwellings (a) |
|----------------------------|------------|------------|-------------|-------------|-------------|-------------|-------------|----------------|----------------------|
| Banana (S) | 23% | 22% | 21% | 15% | 7% | 7% | 4% | 1% | 1,626 |
| Central Highlands (R) | 35% | 18% | 11% | 7% | 7% | 14% | 7% | 1% | 3,669 |
| Isaac (R) | 43% | 31% | 9% | 4% | 3% | 3% | 2% | 5% | 3,010 |
| Whitsunday (R) - Bowen SLA | 13% | 13% | 25% | 26% | 13% | 8% | 1% | 1% | 1,446 |
| Bowen Basin region | 32% | 22% | 14% | 10% | 7% | 9% | 4% | 2% | 9,751 |
| Mackay (R) | 7% | 10% | 12% | 17% | 17% | 29% | 8% | 1% | 9,559 |
| Gladstone (R) | 6% | 10% | 14% | 20% | 23% | 24% | 2% | 1% | 4,997 |
| Rockhampton (R) | 6% | 12% | 20% | 28% | 19% | 13% | 1% | 1% | 10,437 |
| Townsville (C) | 3% | 8% | 13% | 21% | 22% | 29% | 3% | 1% | 18,434 |
| Queensland | 6% | 9% | 10% | 14% | 19% | 34% | 7% | 5% | 432,294 |

(C) - City, (R) - Regional Council, (S) - Shire, SLA - Statistical local area

(a) Includes dwellings where rent payment was not stated.

Cells that are shaded indicate the high point for an area.

Source: ABS, 2006 Census, Table B34

8.4 Home purchase costs

The cost of dwelling purchase in Bowen Basin region is lower than for Queensland overall, except in Central Highlands (R), where the median housing loan repayment was \$1,333 per month. In 2006, the median housing repayment for Bowen SLA was \$953 per month, well below the state average of \$1,300 per month. Median monthly repayments were also lower than the state benchmark in Banana (S) (\$999) and Isaac (R) (\$1,126). In regional cities such as Rockhampton, Gladstone and Townsville, median monthly repayments were also lower than the state average, except in Mackay (R) where the median was \$1,311.

Table 20 shows that the most common monthly repayment category for the Bowen Basin region was \$750-\$1,199 in 2006. More than half (53 per cent) of stated housing repayments in the Bowen Basin region were below \$1,200 per month.

Table 20. Private dwellings by monthly loan repayments for Bowen Basin LGAs, other LGAs and Queensland, 2006

| Area | \$1-\$399 | \$400-\$749 | \$750-\$1,199 | \$1,200-\$1,599 | \$1,600-\$1,999 | \$2,000-\$2,999 | \$3,000 and over | Total (a) |
|----------------------------|-----------|-------------|---------------|-----------------|-----------------|-----------------|------------------|----------------|
| Banana (S) | 8% | 25% | 31% | 17% | 9% | 8% | 3% | 1,444 |
| Central Highlands (R) | 5% | 14% | 23% | 22% | 15% | 15% | 6% | 2,384 |
| Isaac (R) | 14% | 17% | 23% | 16% | 15% | 12% | 3% | 968 |
| Whitsunday (R) - Bowen SLA | 8% | 25% | 33% | 16% | 7% | 8% | 3% | 1,055 |
| Bowen Basin region | 8% | 19% | 27% | 19% | 12% | 12% | 4% | 5,851 |
| Mackay (R) | 4% | 12% | 27% | 22% | 15% | 16% | 4% | 12,029 |
| Gladstone (R) | 4% | 13% | 31% | 26% | 13% | 10% | 3% | 6,930 |
| Rockhampton (R) | 6% | 22% | 34% | 19% | 9% | 7% | 2% | 11,371 |
| Townsville (C) | 4% | 13% | 31% | 25% | 14% | 11% | 3% | 19,632 |
| Queensland | 5% | 14% | 26% | 21% | 14% | 14% | 5% | 470,112 |

(C) - City, (R) - Regional Council, (S) - Shire, SLA - Statistical local area

(a) Includes dwellings where housing loan repayment was not stated.

Cells that are shaded indicate the high point for an area.

Source: ABS, 2006 Census, Table B33

8.5 Dwelling approvals

Dwelling approvals in the region grew strongly from early in the decade when total approvals were only 107 in 2001–02 (Table 21). Significant growth in mining activity in the next five years saw regional dwelling approvals jump to 720 by 2006–07. In more recent years, the number of dwellings approved has declined to more moderate levels. Over the 2001–2010 period, the numbers of dwellings approved were highest in Central Highlands (R). For example, almost half (47 per cent) of the total number of dwellings approved in the region (2,140) between 2005–06 and 2008–09 were in Central Highlands LGA.

Other LGAs such as Mackay, Rockhampton and Townsville experienced a surge of activity in 2006–07 and 2007–08. Building activity in Gladstone tends to be more cyclical than other areas, with peaks occurring in 2002–03 and again in 2007–08.

The results for the nine months to the end of March 2010 show a resurgence of activity in most areas, with total approvals for the region (401) exceeding the number for the whole of 2008–09 (373). Quarterly results should be treated with caution, as there is a known lag in reporting of approvals to ABS from some local government areas. The latest figures are subject to revision by the ABS.

Table 21. Dwelling approvals for Bowen Basin LGAs, other LGAs and Queensland, 2001–02 to 2008–09 and nine months to March quarter 2010

| Area | Year to 30 June | | | | | | | | Nine mths to March qtr 2010 |
|----------------------------|-----------------|---------------|---------------|---------------|---------------|---------------|---------------|---------------|-----------------------------|
| | 2002 | 2003 | 2004 | 2005 | 2006 | 2007 | 2008 | 2009 | |
| Banana (S) | 23 | 26 | 24 | 48 | 58 | 51 | 55 | 13 | 17 |
| Central Highlands (R) | 40 | 75 | 110 | 160 | 216 | 400 | 196 | 198 | 244 |
| Isaac (R) | 18 | 45 | 46 | 181 | 151 | 167 | 127 | 78 | 51 |
| Whitsunday (R) - Bowen SLA | 26 | 20 | 60 | 41 | 129 | 102 | 115 | 84 | 89 |
| Bowen Basin region | 107 | 166 | 240 | 430 | 554 | 720 | 493 | 373 | 401 |
| Mackay (R) | 688 | 635 | 1,017 | 1,009 | 932 | 1,127 | 1,080 | 781 | 812 |
| Gladstone (R) | 464 | 699 | 584 | 518 | 541 | 702 | 715 | 389 | 217 |
| Rockhampton (R) | 592 | 543 | 611 | 601 | 719 | 945 | 962 | 439 | 314 |
| Townsville (C) | 1,611 | 1,264 | 1,914 | 1,924 | 1,967 | 2,106 | 2,817 | 1,265 | 1,364 |
| Queensland | 36,298 | 41,544 | 45,089 | 39,057 | 37,865 | 41,516 | 45,052 | 28,415 | 24,006 |

(C) - City, (R) - Regional Council, (S) - Shire, SLA - Statistical local area

Source: ABS, unpublished data

8.6 House sales—volumes and prices

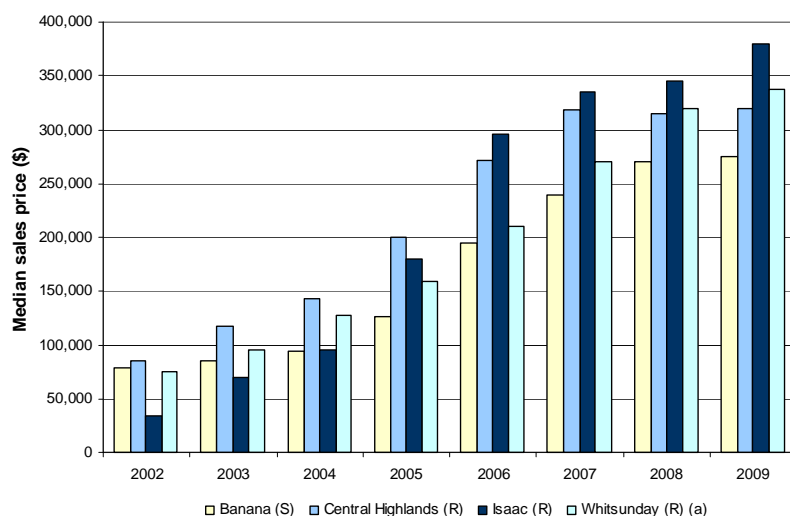


Figure 13. Median sales price for houses, Bowen Basin LGAs, 2001–02 to 2008–09

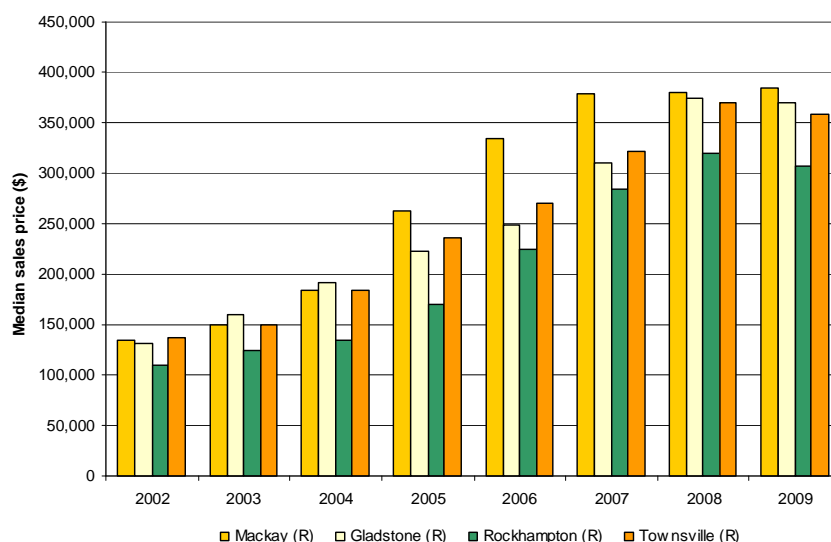
The median sales price of detached houses in Isaac (R) for the year to 30 June 2009 was \$379,000, the highest in the region and more than \$100,000 above the median price in Banana (S) (\$275,000) in the same year (Figure 13). House prices in all LGAs have increased considerably since 2002, when the median price for Isaac (R) was just \$34,900.

(C) - City, (R) - Regional Council, (S) - Shire
(a) Bowen SLA.

Source for Figures 13–14: OESR, 2010; Qld Department of Environment and Resource Management, unpublished data

Figure 14. Median sales price for houses, selected regional LGAs, 2001–02 to 2008–09

The median sales price of detached houses in Mackay (R) for the year to 30 June 2009 was \$385,000, slightly higher than the figure for Isaac (R) in that year (\$379,000) (Figure 14). Median prices in all four LGAs have increased considerably since 2002, but not as sharply as prices in the Bowen Basin region. The lowest median price in 2001–02 was \$110,000 in Rockhampton (R).



The number of house sales in the region declined to 1,383 in the year to 30 June 2009, down from a peak of 2,327 sales in 2005 (Table 22). The strongest results have occurred in Central Highlands (R), which has contributed at least one third of all annual houses sales in the region since 2001–02.

Table 22. Number of house sales for Bowen Basin LGAs, year to 30 June 2002 to 2009

| LGA | 2002 | 2003 | 2004 | 2005 | 2006 | 2007 | 2008 | 2009 |
|----------------------------|--------------|--------------|--------------|--------------|--------------|--------------|--------------|--------------|
| Banana (S) | 315 | 315 | 388 | 413 | 341 | 354 | 271 | 225 |
| Central Highlands (R) | 885 | 838 | 881 | 871 | 894 | 804 | 565 | 605 |
| Isaac (R) | 341 | 406 | 533 | 671 | 625 | 422 | 464 | 361 |
| Whitsunday (R) - Bowen SLA | 314 | 435 | 373 | 372 | 367 | 397 | 245 | 192 |
| Bowen Basin region | 1,855 | 1,994 | 2,175 | 2,327 | 2,227 | 1,977 | 1,545 | 1,383 |

(R) - Regional Council, (S) - Shire, SLA - Statistical local area

Source: OESR; Qld Department of Environment and Resource Management, unpublished data

8.7 Sales of residential land

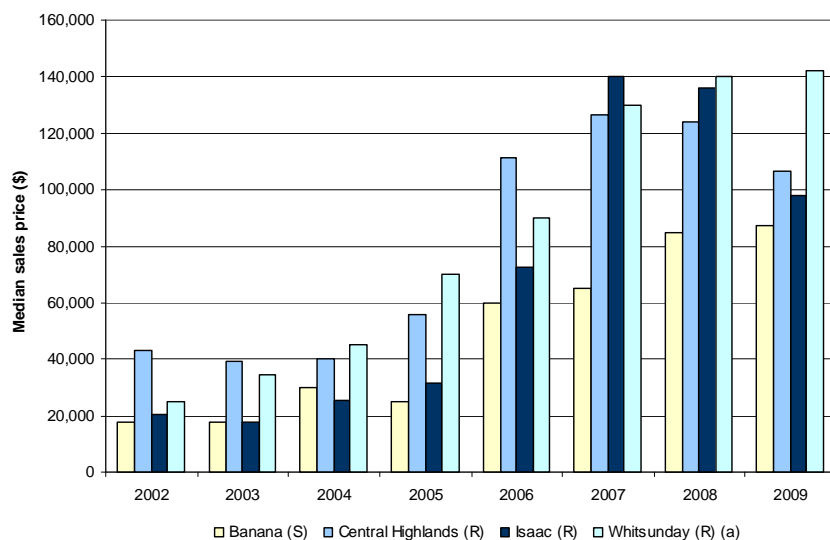


Figure 15. Median sales price for land, Bowen Basin LGAs, 2001-02 to 2008-09

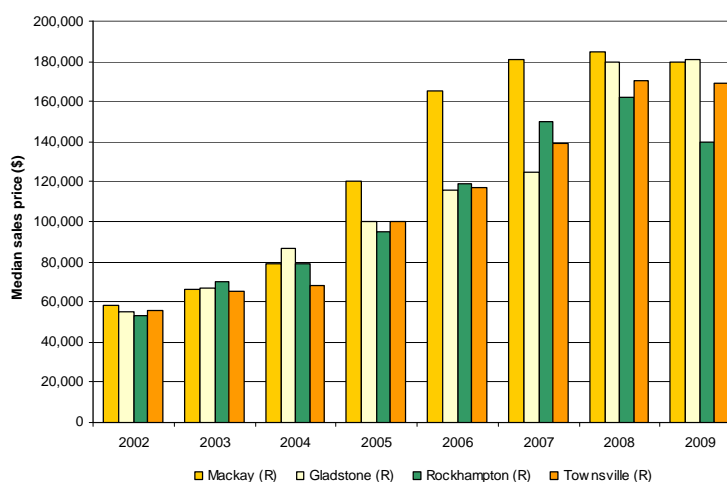
The median sales price of residential lots in Bowen SLA for the year to 30 June 2009 was \$142,000, higher than in any other LGA in the region (Figure 15). Land prices in all LGAs have increased considerably since 2002, when the median price for Bowen SLA was just \$25,000.

(C) - City, (R) - Regional Council, (S) - Shire
(a) Bowen SLA.

Source for Figures 15-16: OESR, 2010; Qld Department of Environment and Resource Management, unpublished data

Figure 16. Median sales price for land, selected regional LGAs, 2001-02 to 2008-09

The median sales price of residential land in Gladstone (R) for the year to 30 June 2009 was \$181,000, slightly higher than the median price for Mackay (R) (\$179,500) (Figure 16). Land prices have increased significantly since 2002, when the median price in Gladstone (R) was \$55,000.



The number of land sales in the region increased marginally to 499 in the year to 30 June 2009, although it was well down from a peak of 759 sales in 2004-05 (Table 23). However, land sales in the last two years were well above those recorded in 2001-02 (180) and 2002-03 (339).

Table 23. Number of land sales for Bowen Basin LGAs, year to 30 June 2002 to 2009

| LGA | 2002 | 2003 | 2004 | 2005 | 2006 | 2007 | 2008 | 2009 |
|----------------------------|------------|------------|------------|------------|------------|------------|------------|------------|
| Banana (S) | 24 | 41 | 48 | 93 | 105 | 98 | 69 | 18 |
| Central Highlands (R) | 69 | 125 | 269 | 326 | 260 | 246 | 181 | 160 |
| Isaac (R) | 34 | 65 | 152 | 200 | 164 | 72 | 55 | 236 |
| Whitsunday (R) - Bowen SLA | 53 | 108 | 109 | 140 | 160 | 133 | 108 | 85 |
| Bowen Basin region | 180 | 339 | 578 | 759 | 689 | 549 | 413 | 499 |

(R) - Regional Council, (S) - Shire, SLA - Statistical local area

Source: OESR; Qld Department of Environment and Resource Management, unpublished data

APPENDICES

Appendix A. Resident population estimates for Bowen Basin urban centres and localities, and Queensland, 2001 to 2009p

| Urban centre / locality (UCLs) | Estimated resident population at 30 June | | | | | Average annual change | | | |
|--------------------------------|--|------------------|------------------|------------------|------------------|-----------------------|------------|----------------|------------|
| | | | | | | 5 years to 2006 | | 1 year to 2009 | |
| | 2001 | 2006 | 2007r | 2008r | 2009p | no. | % | no. | % |
| Baralaba (L) | 260 | 308 | 299 | 294 | 288 | 10 | 3.4 | -6 | -2.0 |
| Biloela | 5,531 | 5,724 | 5,675 | 5,782 | 5,825 | 39 | 0.7 | 43 | 0.7 |
| Blackwater | 4,762 | 5,381 | 5,246 | 5,161 | 5,420 | 124 | 2.5 | 259 | 5.0 |
| Bluff (L) | 337 | 382 | 397 | 374 | 414 | 9 | 2.5 | 40 | 10.7 |
| Bowen | 7,463 | 7,939 | 8,105 | 8,388 | 8,587 | 95 | 1.2 | 199 | 2.4 |
| Capella (L) | 766 | 847 | 883 | 860 | 903 | 16 | 2.0 | 43 | 5.0 |
| Clermont | 2,006 | 1,976 | 1,986 | 1,941 | 1,940 | -6 | -0.3 | -1 | -0.1 |
| Collinsville | 2,087 | 2,191 | 2,148 | 2,143 | 2,068 | 21 | 1.0 | -75 | -3.5 |
| Duaringa (L) | 234 | 265 | 273 | 266 | 265 | 6 | 2.5 | -1 | -0.4 |
| Dysart | 2,500 | 3,340 | 3,421 | 3,449 | 3,444 | 168 | 6.0 | -5 | -0.1 |
| Emerald | 9,931 | 11,748 | 12,197 | 12,648 | 13,118 | 363 | 3.4 | 470 | 3.7 |
| Glenden | 909 | 1,179 | 1,190 | 1,243 | 1,313 | 54 | 5.3 | 70 | 5.6 |
| Merinda (L) | 236 | 243 | 243 | 247 | 284 | 1 | 0.6 | 37 | 15.0 |
| Middlemount | 2,001 | 2,174 | 2,262 | 2,239 | 2,249 | 35 | 1.7 | 10 | 0.4 |
| Moranbah | 6,338 | 7,607 | 7,847 | 8,111 | 8,326 | 254 | 3.7 | 215 | 2.7 |
| Moura | 1,843 | 1,893 | 1,900 | 1,883 | 1,891 | 10 | 0.5 | 8 | 0.4 |
| Nebo (L) | 206 | 298 | 291 | 347 | 342 | 18 | 7.7 | -5 | -1.4 |
| Rubyvale (L) | 501 | 545 | 526 | 553 | 529 | 9 | 1.7 | -24 | -4.3 |
| Sapphire (L) | 508 | 589 | 600 | 649 | 670 | 16 | 3.0 | 21 | 3.2 |
| Springsure (L) | 850 | 880 | 878 | 901 | 901 | 6 | 0.7 | 0 | 0.0 |
| Taroom (L) | 692 | 668 | 651 | 617 | 607 | -5 | -0.7 | -10 | -1.6 |
| Thangool (L) | 359 | 357 | 355 | 359 | 356 | 0 | -0.1 | -3 | -0.8 |
| Theodore (L) | 453 | 475 | 456 | 436 | 430 | 4 | 1.0 | -6 | -1.4 |
| Tieri | 1,610 | 1,784 | 1,742 | 1,755 | 1,661 | 35 | 2.1 | -94 | -5.4 |
| Wandoan (L) | 490 | 413 | 410 | 425 | 421 | -15 | -3.4 | -4 | -0.9 |
| Willows Gemfields (L) | 104 | 111 | 107 | 98 | 100 | 1 | 1.3 | 2 | 2.0 |
| Woorabinda (L) | 1,027 | 918 | 947 | 965 | 965 | -22 | -2.2 | 0 | 0.0 |
| Total UCLs | 54,004 | 60,235 | 61,035 | 62,134 | 63,317 | 1,246 | 2.2 | 1,183 | 1.9 |
| Queensland | 3,628,946 | 4,090,908 | 4,195,981 | 4,308,570 | 4,425,103 | 92,392 | 2.4 | 116,533 | 2.7 |

p - preliminary, r - revised

(L) - Locality

Source: ABS, *Regional population growth, Australia*, cat. no. 3218.0, online

Appendix B: Estimated resident population 2006, projected population 2011 to 2031 (medium series), and total population change, 2006 to 2031, Bowen Basin SLAs and Queensland

| Statistical local area | ERP, 30 June 2006 | Projection year (medium series) | | | | | Total population change 2006–2031 |
|------------------------|-------------------|---------------------------------|------------------|------------------|------------------|------------------|-----------------------------------|
| | | 2011 | 2016 | 2021 | 2026 | 2031 | |
| | No. of persons | | | | | | |
| Banana | 14,238 | 14,424 | 14,542 | 14,666 | 14,879 | 15,139 | 901 |
| Bauhinia | 2,325 | 2,444 | 2,527 | 2,603 | 2,739 | 2,935 | 610 |
| Belyando | 11,149 | 12,485 | 14,137 | 15,674 | 16,976 | 18,479 | 7,330 |
| Bowen | 13,135 | 14,179 | 15,127 | 16,050 | 16,962 | 17,862 | 4,727 |
| Broadsound | 7,291 | 8,320 | 9,323 | 10,034 | 10,421 | 10,675 | 3,384 |
| Duarina | 7,214 | 8,025 | 8,660 | 9,303 | 9,963 | 10,635 | 3,421 |
| Emerald | 15,334 | 18,167 | 20,598 | 23,085 | 25,727 | 28,285 | 12,951 |
| Nebo | 2,673 | 3,325 | 3,976 | 4,581 | 5,034 | 5,427 | 2,754 |
| Peak Downs | 3,383 | 3,723 | 3,980 | 4,273 | 4,623 | 5,017 | 1,634 |
| Taroom | 2,538 | 2,539 | 2,611 | 2,740 | 2,922 | 3,153 | 615 |
| Queensland | 4,090,908 | 4,567,713 | 5,040,325 | 5,478,715 | 5,884,389 | 6,273,885 | 2,182,977 |

Source: Department of Infrastructure and Planning, *Queensland's future population, 2008 edition*, online

Appendix C: Average annual population change 2006 to 2031 (medium series), Bowen Basin SLAs and Queensland

| Statistical local area | Average annual population change, five years to: | | | | | Average annual population change, 2006–2031 | |
|------------------------|--|---------------|---------------|---------------|---------------|---|------------|
| | 2011 | 2016 | 2021 | 2026 | 2031 | No. of persons | % |
| Banana | 37 | 24 | 25 | 43 | 52 | 36 | 0.3 |
| Bauhinia | 24 | 17 | 15 | 27 | 39 | 24 | 1.0 |
| Belyando | 267 | 330 | 307 | 260 | 301 | 293 | 2.6 |
| Bowen | 209 | 190 | 185 | 182 | 180 | 189 | 1.4 |
| Broadsound | 206 | 201 | 142 | 77 | 51 | 135 | 1.9 |
| Duarina | 162 | 127 | 129 | 132 | 134 | 137 | 1.9 |
| Emerald | 567 | 486 | 497 | 528 | 512 | 518 | 3.4 |
| Nebo | 130 | 130 | 121 | 91 | 79 | 110 | 4.1 |
| Peak Downs | 68 | 51 | 59 | 70 | 79 | 65 | 1.9 |
| Taroom | 0 | 14 | 26 | 36 | 46 | 25 | 1.0 |
| Queensland | 95,361 | 94,522 | 87,678 | 81,135 | 77,899 | 87,319 | 2.1 |

Source: Department of Infrastructure and Planning, *Queensland's future population, 2008 edition*, online

Appendix D: Estimated resident population: number by age group, Bowen Basin LGAs and Queensland, 30 June 2006, persons

| Area | Age group (years) | | | | | | |
|----------------------------|-------------------|----------------|------------------|------------------|----------------|----------------|------------------|
| | 0-14 | 15-24 | 25-44 | 45-64 | 65-74 | 75+ | Total |
| | No. of persons | | | | | | |
| Banana (S) | 3,693 | 1,969 | 4,629 | 3,684 | 972 | 695 | 15,642 |
| Central Highlands (R) | 7,047 | 4,107 | 9,454 | 6,133 | 972 | 543 | 28,256 |
| Isaac (R) | 5,363 | 2,818 | 7,457 | 4,709 | 502 | 264 | 21,113 |
| Whitsunday (R) - Bowen SLA | 2,537 | 1,572 | 3,332 | 3,824 | 1,053 | 817 | 13,135 |
| Bowen Basin region | 18,640 | 10,466 | 24,872 | 18,350 | 3,499 | 2,319 | 78,146 |
| Queensland | 834,682 | 578,600 | 1,169,244 | 1,013,986 | 267,532 | 226,864 | 4,090,908 |

(R) - Regional Council, (S) - Shire

Source: Department of Infrastructure and Planning, *Queensland's future population, 2008 edition*, online

Appendix E: Projected resident population (medium series): number by age group, Bowen Basin LGAs and Queensland, 30 June 2031, persons

| Area | Age group (years) | | | | | | |
|----------------------------|-------------------|----------------|------------------|------------------|----------------|----------------|------------------|
| | 0-14 | 15-24 | 25-44 | 45-64 | 65-74 | 75+ | Total |
| | No. of persons | | | | | | |
| Banana (S) | 3,744 | 1,882 | 4,728 | 3,948 | 1,316 | 1,268 | 16,885 |
| Central Highlands (R) | 9,924 | 5,447 | 14,362 | 11,826 | 3,077 | 2,231 | 46,867 |
| Isaac (R) | 8,456 | 4,299 | 12,278 | 7,992 | 1,040 | 519 | 34,584 |
| Whitsunday (R) - Bowen SLA | 2,736 | 1,708 | 4,401 | 4,102 | 2,196 | 2,719 | 17,862 |
| Bowen Basin region | 24,860 | 13,336 | 35,769 | 27,868 | 7,629 | 6,737 | 116,198 |
| Queensland | 1,109,853 | 756,591 | 1,599,185 | 1,533,630 | 640,486 | 634,138 | 6,273,883 |

(R) - Regional Council, (S) - Shire

Source: Department of Infrastructure and Planning, *Queensland's future population, 2008 edition*, online

Appendix F: Estimated resident population: proportions by age group, Bowen Basin SLAs and Queensland, 30 June 2006, persons, and median ages, 2006 and 2031

| Statistical local area | Age group (years) | | | | | | | Median age (years) | |
|------------------------|-------------------|-----------|-----------|-----------|----------|----------|------------------|--------------------|-----------|
| | 0-14 | 15-24 | 25-44 | 45-64 | 65-74 | 75+ | Total | 2006 | 2031 |
| | % of total | | | | | | | No. of persons | |
| Banana | 24 | 13 | 30 | 23 | 6 | 4 | 14,238 | 34 | 36 |
| Bauhinia | 23 | 12 | 31 | 24 | 5 | 5 | 2,325 | 35 | 43 |
| Belyando | 26 | 14 | 36 | 21 | 2 | 2 | 11,149 | 30 | 32 |
| Bowen | 19 | 12 | 25 | 29 | 8 | 6 | 13,135 | 41 | 45 |
| Broadsound | 26 | 12 | 34 | 24 | 3 | 1 | 7,291 | 32 | 33 |
| Duaringa | 25 | 14 | 34 | 24 | 2 | 1 | 7,214 | 31 | 36 |
| Emerald | 25 | 16 | 33 | 21 | 4 | 2 | 15,334 | 31 | 35 |
| Nebo | 22 | 13 | 37 | 24 | 3 | 1 | 2,673 | 33 | 37 |
| Peak Downs | 27 | 13 | 37 | 20 | 2 | 1 | 3,383 | 31 | 37 |
| Taroom | 22 | 10 | 28 | 28 | 8 | 6 | 2,538 | 39 | 45 |
| Queensland | 20 | 14 | 29 | 25 | 7 | 6 | 4,090,908 | 36 | 41 |

Source: Department of Infrastructure and Planning, *Queensland's future population, 2008 edition*, online

GLOSSARY

ABS

The Australian Bureau of Statistics.

Census

The Census of Population and Housing is the largest statistical operation undertaken by the Australian Bureau of Statistics. It aims to accurately measure the number of people in Australia on census night, their key characteristics, and the dwellings in which they live. The scope of the Census is all people in Australia on census night, other than foreign diplomats and their families. Visitors to Australia are counted regardless of how long they have been in the country or how long they plan to stay. Australian residents out of the country on census night are not included. The 2006 Census was conducted on 8 August 2006. The next Census will be conducted on 9 August 2011.

Estimated Resident Population (ERP)

The ABS prepares annual estimates of the resident population for Australia during intercensal years, which are based on the usual resident population measure derived from the previous Census. This ERP is derived from data on population indicators at the sub-state level, including dwelling approvals, Medicare change of address records and electoral enrolments.

Fly in/fly out or drive in/drive out (FIFO/DIDO)

An arrangement whereby workers live for an extended period in an area removed from their usual place of residence while on-shift and commute by air or road between home and place of work. Flexible work schedules and accommodation arrangements in the mining industry have made FIFO/DIDO more feasible, to the point where it has now supplanted provision of local housing as a condition of employment for many operations. See also Non-resident workers.

Full-time equivalent (FTE) population

A measure derived by PIFU that approximates the total population living in an area at a given point in time, as applied to the nine pre-amalgamated local government areas of the Bowen Basin included in this report. The FTE is based on two components—a survey of accommodation providers that counts the number of non-resident workers and the resident population component estimated to be present in the area at the time of survey. See also Non-resident workers.

Local government area (LGA)

According to the Australian Standard Geographical Classification (ASGC), the local government area (LGA) is a spatial unit that represents the geographical area under the responsibility of an incorporated local government council, or an Aboriginal or Island Council. An LGA may be a City (C), Regional Council (R), Shire (S) or Town (T).

In the statistical geography current at the time of the Census in August 2006 (ASGC, 2006), LGAs were equal to or larger than statistical local areas (SLAs) and collection districts (CDs). In March 2008, LGA boundaries were changed as the result of administrative reforms in Queensland and the reformed LGA boundaries were included in the 2008 standard geographical classification (ASGC, 2008).

Non-resident workers

Employees of mining companies, contractors and construction workers who live in an area for extended periods when working, but have a permanent place of residence in another area. This group includes workers engaged in FIFO arrangements and who live locally in non-private dwellings such as single persons quarters (SPQs), hotels, motels, caravan parks and other forms of accommodation while on-shift. Although many non-resident workers may actually spend a total of more than six months of the year in their area of work, they are generally not regarded as being residents by the ABS and are omitted from estimates of the resident population. See also FIFO/DIDO, ERP.

Office of Economic and Statistical Research

The Office of Economic and Statistical Research (OESR), a portfolio office of Queensland Treasury, is the principal economic, demographic and social research agency for the Queensland Government. OESR and the former Planning Information and Forecasting Unit (PIFU) were amalgamated in late 2009.

Resident population

According to the ABS, the resident population is an estimate of the number of persons who are resident within a given area. For census years, the resident population is determined from responses given to questions in the census form regarding occupancy. People are regarded as residents of the area if they identified that they lived in the area for at least six months of the census year. The ABS collates all census results and redistributes resident persons who were absent on census collection night back into their area of usual residence. This usual resident population, which is also adjusted for undercount, then forms the basis for estimating population change in the intercensal period.

Statistical local area (SLA)

The statistical local area (SLA) is a defined area under the ASGC. In Queensland, many SLAs share the same boundaries as LGAs. In the Bowen Basin, many former LGAs became SLAs following local government reforms in 2008 without any further boundary changes. The exception was Banana Shire which was expanded in area following the addition of the northern part of the former Shire of Taroom. The resulting LGA retained the name of the former LGA. The SLA of Banana Shire shares the same boundaries as the LGA of that name. SLAs cover, in aggregate, the whole of Australia without gaps or overlaps. See also Local government area.

Usual residence

The ABS uses two concepts of usual residence—*usual residence in a dwelling* and *usual residence in a household or family home*. These concepts are defined differently:

- Usual residence in a dwelling applies to the dwelling where the person lives for the majority of the time, and is the definition used to estimate the usual resident (UR) population derived from the Census of Population and Housing. The Census establishes usual residence according to the place where the person has lived or intends to live for six months or more in the census year.
- Usual residence in a household or family home applies to the dwelling that the person considers to be their family home or place of usual residence, irrespective of the length of time that they actually live in the dwelling. This definition is used by the ABS for the Monthly Population Survey and other household surveys.

For most people, the family home is the place where they live for the majority of the time, and that dwelling may be considered to be their place of usual residence according to both definitions. An exception occurs in the case of mining and construction workers, who live for extended periods in non-private accommodation near the work site but fly or drive to their family home when off-roster. It is likely that many of these workers would consider the family home to be their usual place of residence, despite spending more than half of the given year at the location of their workplace.

REFERENCES

ABS, *Census of Population and Housing: Socio-Economic Indexes for Areas (SEIFA), Australia - data only, 1996*, cat. no. 2033.0.55.001, online
<http://www.abs.gov.au/AUSSTATS/abs@.nsf/DetailsPage/2033.0.55.0011996?OpenDocument>

ABS, *Population by age and sex, Australia, 2006*, cat. no. 3235.0, online
<http://www.abs.gov.au/AUSSTATS/abs@.nsf/DetailsPage/3235.02006?OpenDocument>

ABS, *Regional population growth, Australia*, cat. no. 3218.0, online
<http://www.abs.gov.au/AUSSTATS/abs@.nsf/DetailsPage/3218.02008-09?OpenDocument>

ABS, *Year book Australia, 2001*, online
<http://www.abs.gov.au/ausstats/abs@.nsf/featurearticlesbyCatalogue/4647DAAE51A452E6CA2569DE0024578E?OpenDocument>

Department of Employment, Economic Development and Innovation, *Coal statistics*, online
http://www.dme.qld.gov.au/zone_files/coal_stats_xls/fyr_0809.xls

Department of Infrastructure and Planning, *Queensland's future population 2008 edition*, online
<http://www.oesr.qld.gov.au/publications/regular-publications/demography/qld-future-population/index.shtml>

Office of Economic and Statistical Research, *Bowen Basin population report, 2009*, online
<http://www.oesr.qld.gov.au/publications/regular-publications/demography/bowen-basin-pop-report/index.shtml>

Office of Economic and Statistical Research, *Estimated resident population by urban centre and locality, Queensland 2001 to 2009p*, online
<http://www.oesr.qld.gov.au/queensland-by-theme/demography/population/tables/erp/erp-ucl-qld/index.shtml>

Office of Economic and Statistical Research, *Queensland regional profiles*, online
<http://statistics.oesr.qld.gov.au/qld-regional-profiles>

Office of Economic and Statistical Research, *Report two—Demographic profile of Darling Downs/Maranoa area, 2009; Background studies for Darling Downs/Maranoa area (Reports 1–3)*, 2009, online
<http://www.oesr.qld.gov.au/publications/single-publications/demography/dd-maranoa-study/demog-profile-dd-maranoa-2009/index.shtml>

Office of Economic and Statistical Research, *Report three—Workforce analysis of Darling Downs/Maranoa area, 2009; Background studies for Darling Downs/Maranoa area (Reports 1–3)*, 2009, online
<http://www.oesr.qld.gov.au/publications/single-publications/economic-performance/dd-maranoa-study/workforce-analysis-dd-maranoa-2009/index.shtml>



Office of Economic and Statistical Research
Queensland Treasury
PO Box 15037, City East QLD 4002
Australia
tel +61 7 3224 5326
fax +61 7 3227 7437
pifu@treasury.qld.gov.au
www.oesr.qld.gov.au/pifu