

Digital broadhectare factsheet

Future residential land supply as a GIS layer

The Department of Infrastructure and Planning, through the Planning Information and Forecasting Unit (PIFU), is a leading provider of planning information for business decision makers.

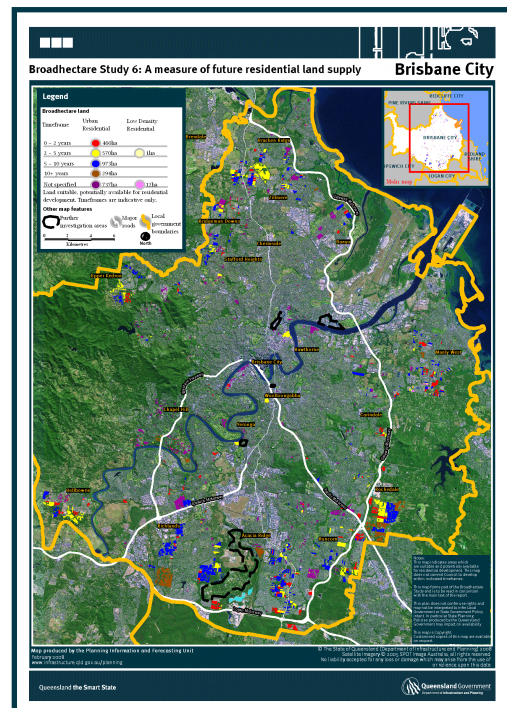
A key component of PIFU's work involves the development of geographic information systems (GIS) where a range of spatial data sets in relation to land, urban development and population are combined to produce value-added outcomes.

What is the digital broadhectare?

The broadhectare study measures land supply based primarily on larger parcels for future residential development and its capacity to house resident population.

The GIS analysis technique used in the broadhectare study involves creating a land parcel based model over a local government area of land. Each segment is then populated with information that affects the suitability and availability for residential development. Using rule-based filtering, broadhectare land stocks can be readily identified.

The results are stored in a spatial data format, which enables the information to be integrated and analysed with other spatial information. The digital broadhectare study result layers can be purchased for each of the local government areas in South East Queensland.



Note: You must have suitable GIS software to use the digital broadhectare. Free GIS viewing software is available for download from various internet sources.



What is included?

The digital broadhectare layer is a cadastral land parcel based GIS dataset. The sizes of the parcels are primarily greater than 2500m². Each grid parcel contains:

- residential category description
- potential development timing
- expected dwelling density
- expected dwelling yield
- reference locality, postcode, and local government area
- Census collection district and statistical local area (SLA) codes for easy integration with Australia Bureau of Statistics data
- area of the parent parcel.

Data can be supplied in the following formats:

- MapInfo (.TAB)
- MapInfo Interchange (.MIF/.MID)
- ArcInfo Export (.Eoo)
- ESRI Shape (.SHP/.SHX)

A sample of the digital broadhectare data can be obtained at no cost by contacting PIFU on 07 3237 1115.

Can I request a customised analysis and map?

PIFU can also provide customised analysis of the broadhectare results and produce maps at a range of sizes on a fee-for-service basis. Please contact PIFU for details on our range of consulting services.

Want more information?

PIFU produces a range of reports and provides consulting services on demographic and housing trends including:

- population trends and projections
- urban land supply analysis
- housing activity and trends
- customised mapping
- geographic information system applications.

Department of **Infrastructure and Planning**
Planning Information and Forecasting Unit
PO Box 15009 City East Qld 4002 Australia
tel +61 7 3237 1115
fax +61 7 3235 4071
pifu@dip.qld.gov.au

www.dip.qld.gov.au