

# Population and Dwelling Profile

Woorabinda Shire Council

Updated April 2012

## Estimated resident population

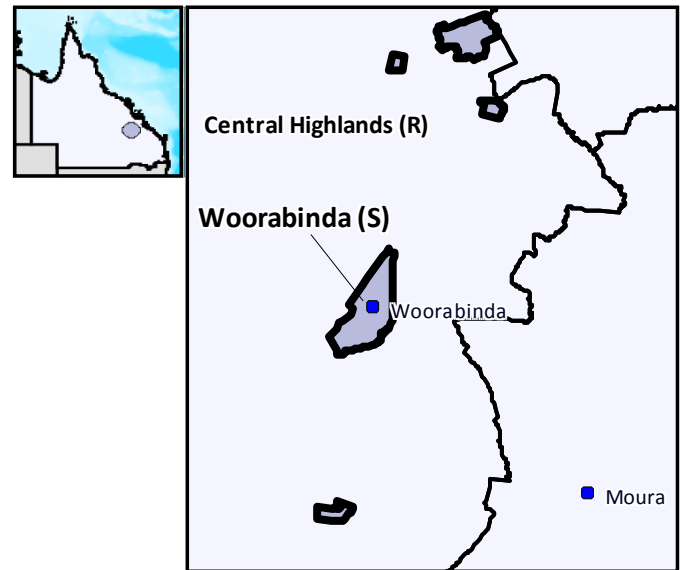
The preliminary estimated resident population of Woorabinda Shire Council at 30 June 2011 was 1,033 persons, an increase of 34 persons or 3.4 per cent over the year. This compares with an increase of 34 persons or 3.5 per cent in the year to June 2010 (Table 1 and Figure 1).

## Components of population change

In the year to June 2009, natural increase (births minus deaths) accounted for an increase of 41 persons while assumed net migration resulted in a loss of 41 persons (Table 1 and Figure 2).

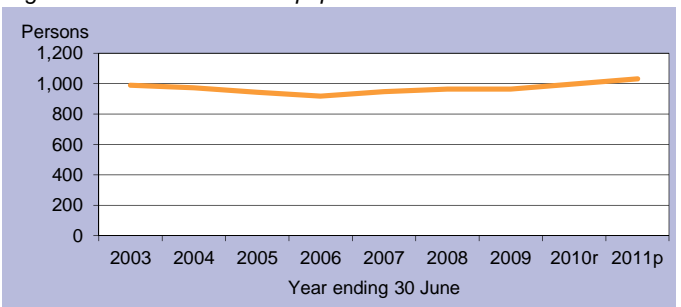
## Population projections

Projections released in 2011 indicate that by 2016 the expected population of Woorabinda Shire Council will be between 1,028 and 1,100 persons (Table 2 and Figure 3). By 2031 this is expected to change to between 1,209 and 1,474 persons (low and high series).



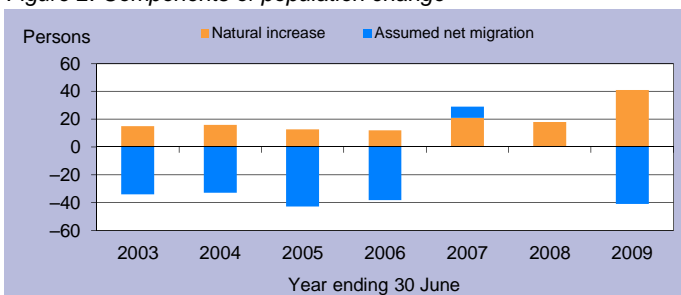
C = City S = Shire R = Regional Council T = Town

Figure 1: Estimated resident population



p = preliminary r = revised

Figure 2: Components of population change



p = preliminary r = revised

Figure 3: Population projections

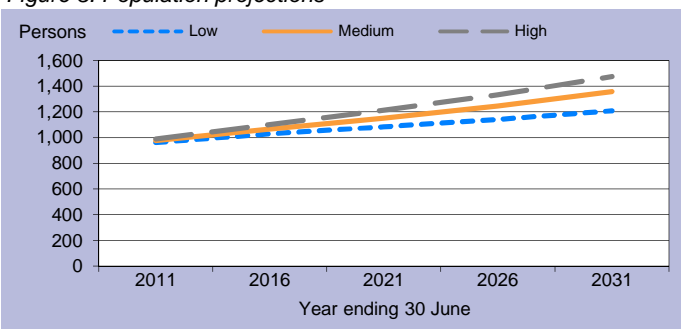


Table 1: Estimated resident population and components of change

Population trends		Annual population change				
As at 30 Jun	Est. resident population	Year to 30 Jun	Natural increase	Assumed net migration	Annual change	
					Total	Per cent
2003	991	2,003	15	-34	-19	-1.9
2004	974	2004	16	-33	-17	-1.7
2005	944	2005	13	-43	-30	-3.1
2006	918	2006	12	-38	-26	-2.8
2007	947	2007	21	8	29	3.2
2008	965	2008	18	0	18	1.9
2009	965	2009	41	-41	0	0.0
2010r	999	2010r	n.y.a.	n.y.a.	34	3.5
2011p	1,033	2011p	n.y.a.	n.y.a.	34	3.4

p = preliminary r = revised n.y.a. = not available

Table 2: Population projections

	Projected population			Average annual change (medium series)	
	Low series	Medium series	High series	Number	Per cent
2011	962	976	990	12	1.2
2016	1,028	1,065	1,100	18	1.8
2021	1,084	1,152	1,212	17	1.6
2026	1,141	1,246	1,332	19	1.6
2031	1,209	1,357	1,474	22	1.7

Table 3: Population by age group, Woorabinda (S)

	Age group					Median age
	0-14	15-24	25-44	45-64	65+	
2006	349	177	249	117	26	21.4
	38.0%	19.3%	27.1%	12.7%	2.8%	
2031*	461	230	373	218	79	24.5
	33.9%	16.9%	27.4%	16.0%	5.8%	

\* Medium series

### Age structure

The median age of Woorabinda Shire Council's population is projected to increase by 3.1 years from a median age of 21.4 years in 2006 to a median age of 24.5 years in 2031 (Table 3 and Figure 4). The median age of Queensland in 2031 is projected to be 40.2 years, under the medium series (Table 4).

### Dwelling approvals

For the year ending December 2011, Woorabinda Shire Council has had no reported new dwelling approvals (Table 5 and Figure 5).

Table 5: New dwelling approvals\*

Year ending	New dwelling approvals			Total
	December	Houses	Other	
2005		0	0	0
2006		2	0	2
2007		0	0	0
2008		0	0	0
2009		0	0	0
2010		0	0	0
2011		0	0	0
Mar qtr 2011		0	0	0
Jun qtr 2011		0	0	0
Sep qtr 2011		0	0	0
Dec qtr 2011		0	0	0

\* Excludes alterations/additions

Figure 5: Dwelling approvals

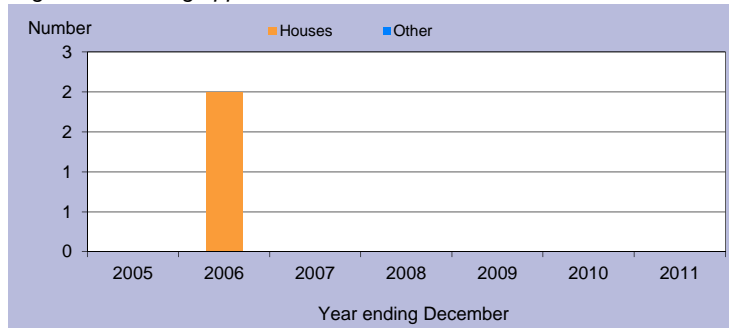
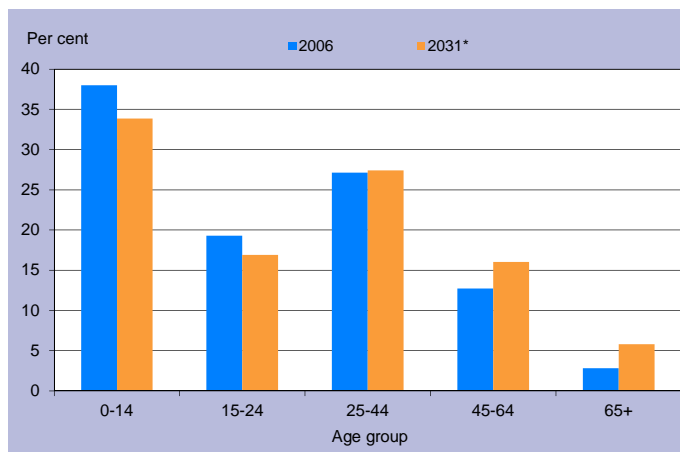


Table 4: Population by age group, Queensland

	Age group					Median age
	0-14	15-24	25-44	45-64	65+	
2006	834,682	578,600	1,169,244	1,013,986	494,396	36.1
	20.4%	14.1%	28.6%	24.8%	12.1%	
2031*	1,205,836	814,688	1,703,235	1,578,741	1,290,350	40.2
	18.3%	12.4%	25.8%	23.9%	19.6%	

\* Medium series

Figure 4: Age distribution, Woorabinda (S), 2006 and 2031\*



\* Medium series

### Household size

In 2006, the average household size for all occupied private dwellings in Woorabinda Shire Council was 4.2 persons. This compares with an average household size of 2.6 for all of Queensland in the same year (Table 6).

Table 6: Average household size by dwelling type

Dwelling type	Average household size			
	Woorabinda (S)			Qld
	1996	2001	2006	2006
Separate house	3.3	3.0	4.3	2.8
Semi-detached, flats, etc	1.7	1.7	0.0	1.8
Other dwellings inc caravans	2.1	1.7	2.4	1.8
All occupied private dwellings	3.2	2.9	4.2	2.6

Sources for the Population and Dwelling Profile:

ABS cat nos 3201.3, 3218.0, 3235.3, 8731.0 (preliminary as at December 2011); ABS unpublished births and deaths data, Census of Population and Housing, 1996, 2001 and 2006; Queensland Government Population Projections, 2011.

You are free to copy, communicate and adapt the work, as long as you attribute the authors. This document is licensed under a Creative Commons Attribution 2.5 Australia licence. To view a copy of this licence, visit <http://creativecommons.org/licenses/by/2.5/au>. To attribute this work, cite Population and Dwelling Profile, Woorabinda Shire Council, Office of Economic and Statistical Research, Queensland Treasury and Trade.

This profile is based on information available to the Office of Economic and Statistical Research at the time of preparation. It does not necessarily reflect the opinions or views of Queensland Treasury and Trade or the Queensland Government. Any statement, opinion or advice expressed or implied in this report is made in good faith but on the basis that the State of Queensland, and its agents and employees are not liable for any damage or loss whatsoever which may occur in relation to its use by the client or any third party.