

Population and Dwelling Profile

Western Downs Regional Council

Updated April 2012

Estimated resident population

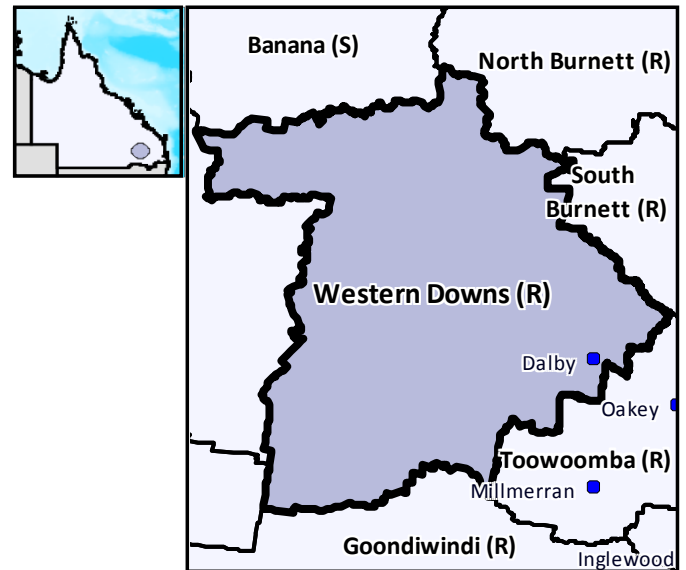
The preliminary estimated resident population of Western Downs Regional Council at 30 June 2011 was 32,831 persons, an increase of 820 persons or 2.6 per cent over the year. This compares with an increase of 543 persons or 1.7 per cent in the year to June 2010 (Table 1 and Figure 1).

Components of population change

In the year to June 2009, natural increase (births minus deaths) accounted for an increase of 302 persons while assumed net migration resulted in a gain of 193 persons (Table 1 and Figure 2).

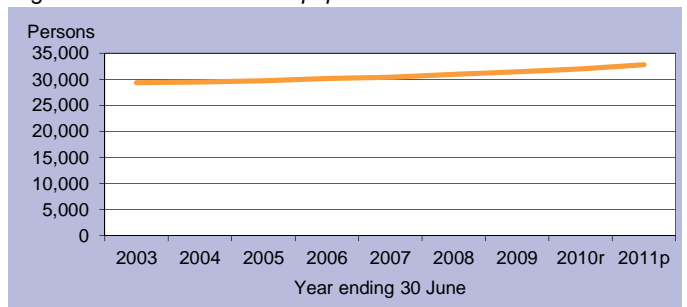
Population projections

Projections released in 2011 indicate that by 2016 the expected population of Western Downs Regional Council will be between 33,551 and 35,532 persons (Table 2 and Figure 3). By 2031 this is expected to change to between 37,292 and 43,701 persons (low and high series).



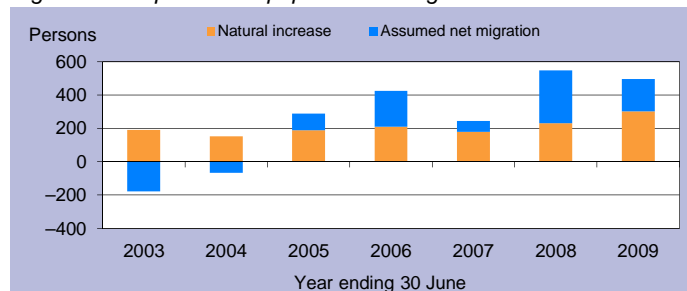
C = City S = Shire R = Regional Council T = Town

Figure 1: Estimated resident population



p = preliminary r = revised

Figure 2: Components of population change



p = preliminary r = revised

Figure 3: Population projections

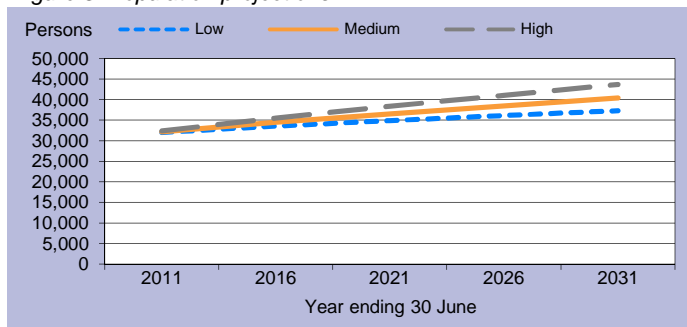


Table 1: Estimated resident population and components of change

Population trends		Annual population change				
As at 30 Jun	Est. resident population	Year to 30 Jun	Natural increase	Assumed net migration	Annual change	
					Total	Per cent
2003	29,382	2,003	191	-178	13	0.0
2004	29,468	2004	152	-66	86	0.3
2005	29,756	2005	188	100	288	1.0
2006	30,180	2006	211	213	424	1.4
2007	30,425	2007	180	65	245	0.8
2008	30,973	2008	230	318	548	1.8
2009	31,468	2009	302	193	495	1.6
2010r	32,011	2010r	n.y.a.	n.y.a.	543	1.7
2011p	32,831	2011p	n.y.a.	n.y.a.	820	2.6

p = preliminary r = revised n.y.a. = not available

Table 2: Population projections

	Projected population			Average annual change (medium series)	
	Low series	Medium series	High series	Number	Per cent
2011	32,000	32,164	32,378	397	1.3
2016	33,551	34,494	35,532	466	1.4
2021	34,839	36,503	38,342	402	1.1
2026	36,081	38,447	41,027	389	1.0
2031	37,292	40,397	43,701	390	1.0

Table 3: Population by age group, Western Downs (R)

	Age group					Median age
	0-14	15-24	25-44	45-64	65+	
2006	6,966	3,618	7,862	7,644	4,096	37.2
	23.1%	12.0%	26.0%	25.3%	13.6%	
2031*	7,634	4,297	10,664	9,937	7,870	40.6
	18.9%	10.6%	26.4%	24.6%	19.5%	

* Medium series

Age structure

The median age of Western Downs Regional Council's population is projected to increase by 3.4 years from a median age of 37.2 years in 2006 to a median age of 40.6 years in 2031 (Table 3 and Figure 4). The median age of Queensland in 2031 is projected to be 40.2 years, under the medium series (Table 4).

Dwelling approvals

There were 219 new dwelling approvals in Western Downs Regional Council over the year ending December 2011, a decrease of 25.5 per cent from the previous year (294) (Table 5). Separate houses made up 90.0 per cent of all new dwelling approvals over the year ending December 2011 (Figure 5).

Table 5: New dwelling approvals*

Year ending	New dwelling approvals			Total
	December	Houses	Other	
2005		118	35	153
2006		176	28	204
2007		126	10	136
2008		61	8	69
2009		176	11	187
2010		247	47	294
2011		197	22	219
Mar qtr 2011		47	3	50
Jun qtr 2011		45	2	47
Sep qtr 2011		56	3	59
Dec qtr 2011		49	14	63

* Excludes alterations/additions

Figure 5: Dwelling approvals

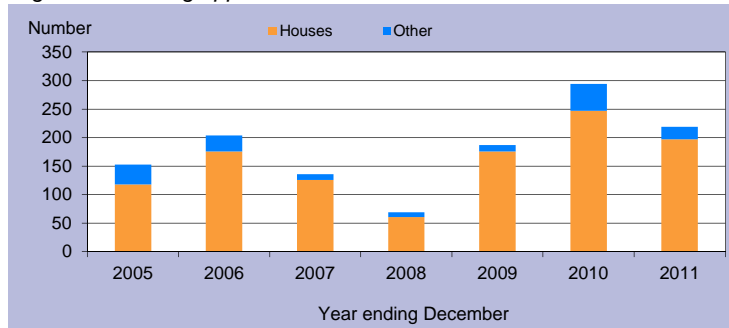
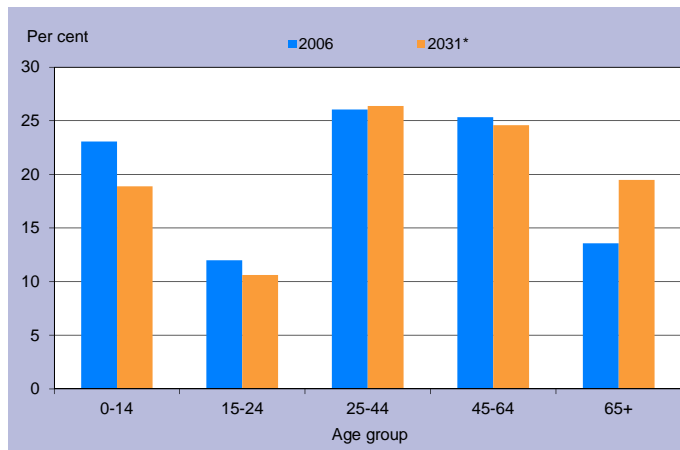


Table 4: Population by age group, Queensland

	Age group					Median age
	0-14	15-24	25-44	45-64	65+	
2006	834,682	578,600	1,169,244	1,013,986	494,396	36.1
	20.4%	14.1%	28.6%	24.8%	12.1%	
2031*	1,205,836	814,688	1,703,235	1,578,741	1,290,350	40.2
	18.3%	12.4%	25.8%	23.9%	19.6%	

* Medium series

Figure 4: Age distribution, Western Downs (R), 2006 and 2031*



* Medium series

Household size

In 2006, the average household size for all occupied private dwellings in Western Downs Regional Council was 2.5 persons. This compares with an average household size of 2.6 for all of Queensland in the same year (Table 6).

Table 6: Average household size by dwelling type

Dwelling type	Average household size			
	Western Downs (R)			Qld
	1996	2001	2006	2006
Separate house	2.7	2.7	2.6	2.8
Semi-detached, flats, etc	1.6	1.5	1.7	1.8
Other dwellings inc caravans	2.1	1.9	1.9	1.8
All occupied private dwellings	2.2	2.6	2.5	2.6

Sources for the Population and Dwelling Profile:

ABS cat nos 3201.3, 3218.0, 3235.3, 8731.0 (preliminary as at December 2011); ABS unpublished births and deaths data, Census of Population and Housing, 1996, 2001 and 2006; Queensland Government Population Projections, 2011.

You are free to copy, communicate and adapt the work, as long as you attribute the authors. This document is licensed under a Creative Commons Attribution 2.5 Australia licence. To view a copy of this licence, visit <http://creativecommons.org/licenses/by/2.5/au>. To attribute this work, cite Population and Dwelling Profile, Western Downs Regional Council, Office of Economic and Statistical Research, Queensland Treasury and Trade.

This profile is based on information available to the Office of Economic and Statistical Research at the time of preparation. It does not necessarily reflect the opinions or views of Queensland Treasury and Trade or the Queensland Government. Any statement, opinion or advice expressed or implied in this report is made in good faith but on the basis that the State of Queensland, and its agents and employees are not liable for any damage or loss whatsoever which may occur in relation to its use by the client or any third party.