

Population and Dwelling Profile

Tablelands Regional Council

Updated April 2012

Estimated resident population

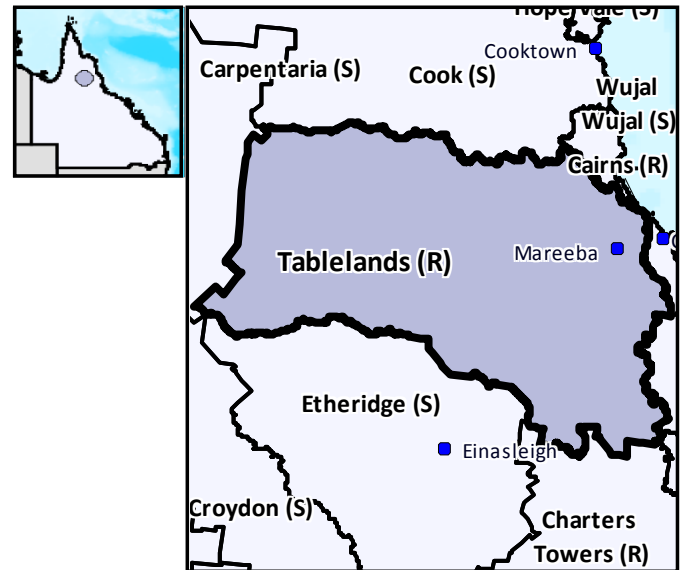
The preliminary estimated resident population of Tablelands Regional Council at 30 June 2011 was 47,282 persons, an increase of 433 persons or 0.9 per cent over the year. This compares with an increase of 485 persons or 1.0 per cent in the year to June 2010 (Table 1 and Figure 1).

Components of population change

In the year to June 2009, natural increase (births minus deaths) accounted for an increase of 215 persons while assumed net migration resulted in a gain of 701 persons (Table 1 and Figure 2).

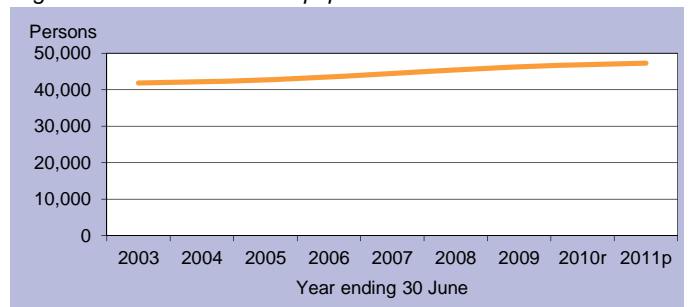
Population projections

Projections released in 2011 indicate that by 2016 the expected population of Tablelands Regional Council will be between 49,522 and 51,876 persons (Table 2 and Figure 3). By 2031 this is expected to change to between 54,949 and 65,506 persons (low and high series).



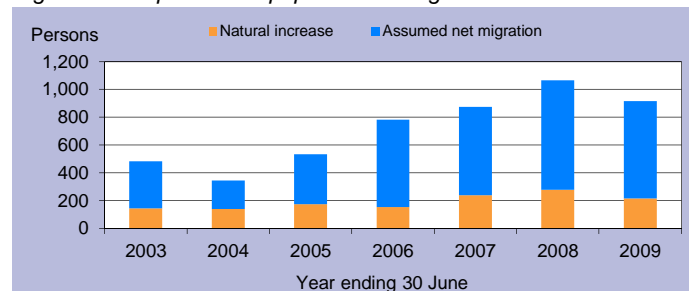
C = City S = Shire R = Regional Council T = Town

Figure 1: Estimated resident population



p = preliminary r = revised

Figure 2: Components of population change



p = preliminary r = revised

Figure 3: Population projections

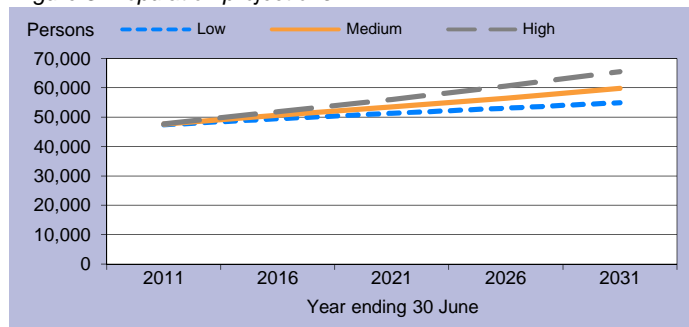


Table 1: Estimated resident population and components of change

Population trends		Annual population change				
As at 30 Jun	Est. resident population	Year to 30 Jun	Natural increase	Assumed net migration	Annual change Total	Per cent
2003	41,845	2,003	144	339	483	1.2
2004	42,190	2004	139	206	345	0.8
2005	42,724	2005	174	360	534	1.3
2006	43,507	2006	154	629	783	1.8
2007	44,382	2007	238	637	875	2.0
2008	45,448	2008	277	789	1,066	2.4
2009	46,364	2009	215	701	916	2.0
2010r	46,849	2010r	n.y.a.	n.y.a.	485	1.0
2011p	47,282	2011p	n.y.a.	n.y.a.	433	0.9

p = preliminary r = revised n.y.a. = not available

Table 2: Population projections

	Projected population			Average annual change (medium series)	
	Low series	Medium series	High series	Number	Per cent
2011	47,362	47,572	47,686	813	1.8
2016	49,522	50,622	51,876	610	1.3
2021	51,292	53,464	56,040	568	1.1
2026	53,056	56,500	60,537	607	1.1
2031	54,949	59,873	65,506	675	1.2

Table 3: Population by age group, Tablelands (R)

	Age group					Median age
	0-14	15-24	25-44	45-64	65+	
2006	9,124	4,578	10,575	12,702	6,528	41.2
	21.0%	10.5%	24.3%	29.2%	15.0%	
2031*	10,143	5,358	12,945	14,462	16,963	47.2
	16.9%	8.9%	21.6%	24.2%	28.3%	

* Medium series

Age structure

The median age of Tablelands Regional Council's population is projected to increase by 6.0 years from a median age of 41.2 years in 2006 to a median age of 47.2 years in 2031 (Table 3 and Figure 4). The median age of Queensland in 2031 is projected to be 40.2 years, under the medium series (Table 4).

Dwelling approvals

There were 197 new dwelling approvals in Tablelands Regional Council over the year ending December 2011, a decrease of 14.7 per cent from the previous year (231) (Table 5). Separate houses made up 82.7 per cent of all new dwelling approvals over the year ending December 2011 (Figure 5).

Table 5: New dwelling approvals*

Year ending	New dwelling approvals		
	Houses	Other	Total
December			
2005	283	0	283
2006	345	31	376
2007	407	37	444
2008	323	27	350
2009	247	18	265
2010	197	34	231
2011	163	34	197
Mar qtr 2011	26	16	42
Jun qtr 2011	47	0	47
Sep qtr 2011	44	12	56
Dec qtr 2011	46	6	52

* Excludes alterations/additions

Figure 5: Dwelling approvals

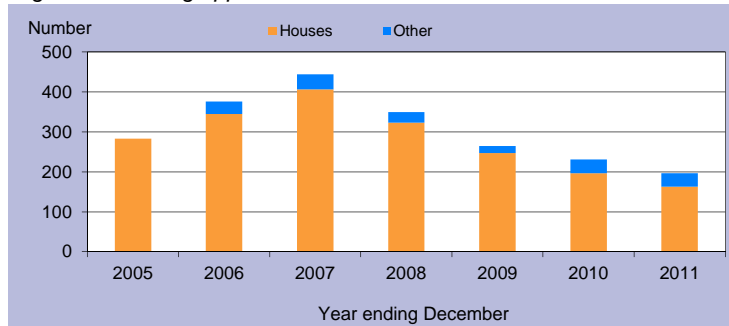
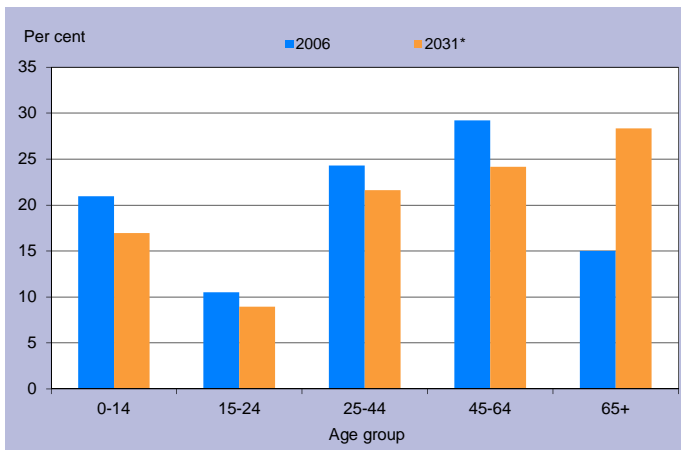


Table 4: Population by age group, Queensland

	Age group					Median age
	0-14	15-24	25-44	45-64	65+	
2006	834,682	578,600	1,169,244	1,013,986	494,396	36.1
	20.4%	14.1%	28.6%	24.8%	12.1%	
2031*	1,205,836	814,688	1,703,235	1,578,741	1,290,350	40.2
	18.3%	12.4%	25.8%	23.9%	19.6%	

* Medium series

Figure 4: Age distribution, Tablelands (R), 2006 and 2031*



* Medium series

Household size

In 2006, the average household size for all occupied private dwellings in Tablelands Regional Council was 2.5 persons. This compares with an average household size of 2.6 for all of Queensland in the same year (Table 6).

Table 6: Average household size by dwelling type

Dwelling type	Average household size			
	Tablelands (R)			Qld
	1996	2001	2006	2006
Separate house	2.8	2.6	2.6	2.8
Semi-detached, flats, etc	2.0	1.7	1.8	1.8
Other dwellings inc caravans	1.8	1.8	1.9	1.8
All occupied private dwellings	2.6	2.5	2.5	2.6

Sources for the Population and Dwelling Profile:

ABS cat nos 3201.3, 3218.0, 3235.3, 8731.0 (preliminary as at December 2011); ABS unpublished births and deaths data, Census of Population and Housing, 1996, 2001 and 2006; Queensland Government Population Projections, 2011.

You are free to copy, communicate and adapt the work, as long as you attribute the authors. This document is licensed under a Creative Commons Attribution 2.5 Australia licence. To view a copy of this licence, visit <http://creativecommons.org/licenses/by/2.5/au>. To attribute this work, cite Population and Dwelling Profile, Tablelands Regional Council, Office of Economic and Statistical Research, Queensland Treasury and Trade.

This profile is based on information available to the Office of Economic and Statistical Research at the time of preparation. It does not necessarily reflect the opinions or views of Queensland Treasury and Trade or the Queensland Government. Any statement, opinion or advice expressed or implied in this report is made in good faith but on the basis that the State of Queensland, and its agents and employees are not liable for any damage or loss whatsoever which may occur in relation to its use by the client or any third party.