

Population and Dwelling Profile

Paroo Shire Council

Updated April 2012

Estimated resident population

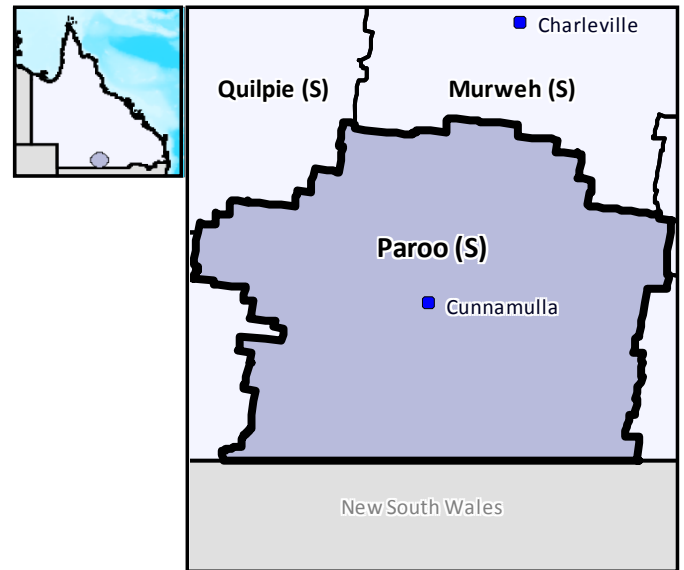
The preliminary estimated resident population of Paroo Shire Council at 30 June 2011 was 1,957 persons, an increase of 10 persons or 0.5 per cent over the year. This compares with an increase of 1 person or 0.1 per cent in the year to June 2010 (Table 1 and Figure 1).

Components of population change

In the year to June 2009, natural increase (births minus deaths) accounted for an increase of 19 persons while assumed net migration resulted in a loss of 35 persons (Table 1 and Figure 2).

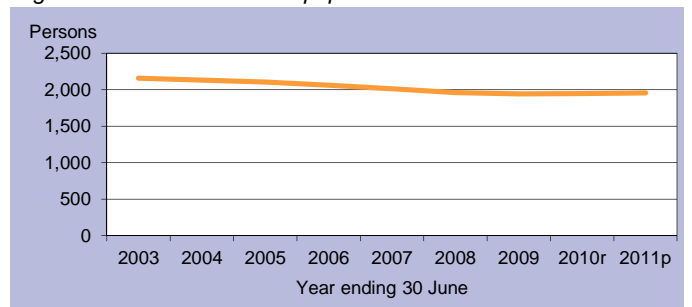
Population projections

Projections released in 2011 indicate that by 2016 the expected population of Paroo Shire Council will be between 1,805 and 1,924 persons (Table 2 and Figure 3). By 2031 this is expected to change to between 1,634 and 2,032 persons (low and high series).



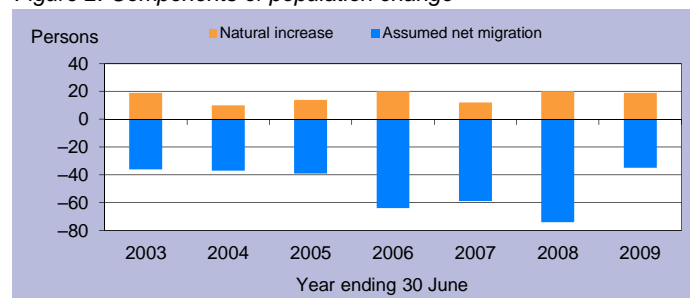
C = City S = Shire R = Regional Council T = Town

Figure 1: Estimated resident population



p = preliminary r = revised

Figure 2: Components of population change



p = preliminary r = revised

Figure 3: Population projections

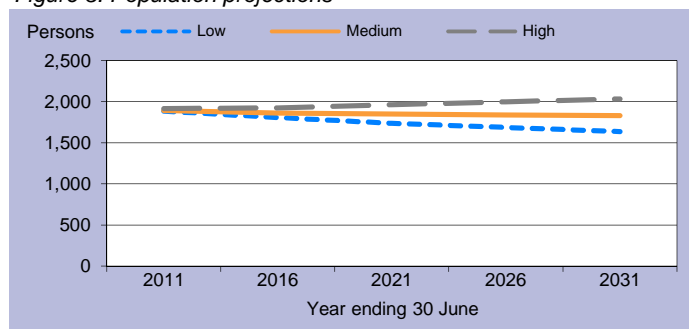


Table 1: Estimated resident population and components of change

| Population trends | | Annual population change | | | | |
|-------------------|--------------------------|--------------------------|------------------|-----------------------|---------------|----------|
| As at 30 Jun | Est. resident population | Year to 30 Jun | Natural increase | Assumed net migration | Annual change | |
| | | | | | Total | Per cent |
| 2003 | 2,159 | 2,003 | 19 | -36 | -17 | -0.8 |
| 2004 | 2,132 | 2004 | 10 | -37 | -27 | -1.3 |
| 2005 | 2,107 | 2005 | 14 | -39 | -25 | -1.2 |
| 2006 | 2,063 | 2006 | 20 | -64 | -44 | -2.1 |
| 2007 | 2,016 | 2007 | 12 | -59 | -47 | -2.3 |
| 2008 | 1,962 | 2008 | 20 | -74 | -54 | -2.7 |
| 2009 | 1,946 | 2009 | 19 | -35 | -16 | -0.8 |
| 2010r | 1,947 | 2010r | n.y.a. | n.y.a. | 1 | 0.1 |
| 2011p | 1,957 | 2011p | n.y.a. | n.y.a. | 10 | 0.5 |

p = preliminary r = revised n.y.a. = not available

Table 2: Population projections

| | Projected population | | | Average annual change (medium series) | |
|------|----------------------|---------------|-------------|---------------------------------------|----------|
| | Low series | Medium series | High series | Number | Per cent |
| 2011 | 1,884 | 1,892 | 1,913 | -34 | -1.7 |
| 2016 | 1,805 | 1,860 | 1,924 | -6 | -0.3 |
| 2021 | 1,735 | 1,848 | 1,963 | -2 | -0.1 |
| 2026 | 1,685 | 1,838 | 1,998 | -2 | -0.1 |
| 2031 | 1,634 | 1,829 | 2,032 | -2 | -0.1 |

Table 3: Population by age group, Paroo (S)

| | Age group | | | | | Median age |
|-------|-----------|-------|-------|-------|-------|------------|
| | 0-14 | 15-24 | 25-44 | 45-64 | 65+ | |
| 2006 | 461 | 235 | 513 | 601 | 253 | 38.7 |
| | 22.3% | 11.4% | 24.9% | 29.1% | 12.3% | |
| 2031* | 277 | 187 | 413 | 508 | 447 | 46.6 |
| | 15.1% | 10.2% | 22.5% | 27.7% | 24.4% | |

* Medium series

Age structure

The median age of Paroo Shire Council's population is projected to increase by 7.9 years from a median age of 38.7 years in 2006 to a median age of 46.6 years in 2031 (Table 3 and Figure 4). The median age of Queensland in 2031 is projected to be 40.2 years, under the medium series (Table 4).

Dwelling approvals

There were 3 new dwelling approvals in Paroo Shire Council over the year ending December 2011, an increase of 50.0 per cent from the previous year (2) (Table 5). Separate houses made up 100.0 per cent of all new dwelling approvals over the year ending December 2011 (Figure 5).

Table 5: New dwelling approvals*

| Year ending | New dwelling approvals | | |
|--------------|------------------------|-------|-------|
| | Houses | Other | Total |
| December | | | |
| 2005 | 0 | 0 | 0 |
| 2006 | 3 | 0 | 3 |
| 2007 | 1 | 0 | 1 |
| 2008 | 3 | 0 | 3 |
| 2009 | 2 | 0 | 2 |
| 2010 | 2 | 0 | 2 |
| 2011 | 3 | 0 | 3 |
| Mar qtr 2011 | 0 | 0 | 0 |
| Jun qtr 2011 | 2 | 0 | 2 |
| Sep qtr 2011 | 0 | 0 | 0 |
| Dec qtr 2011 | 1 | 0 | 1 |

* Excludes alterations/additions

Figure 5: Dwelling approvals

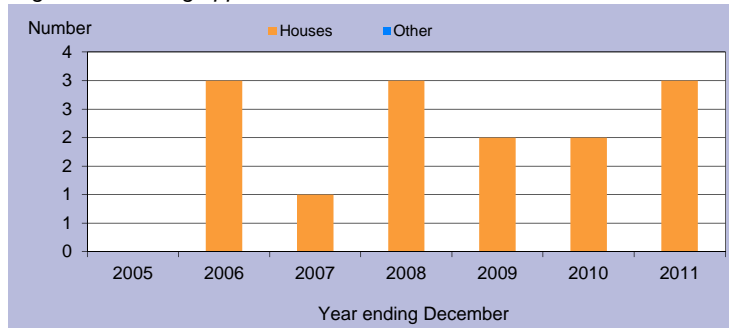
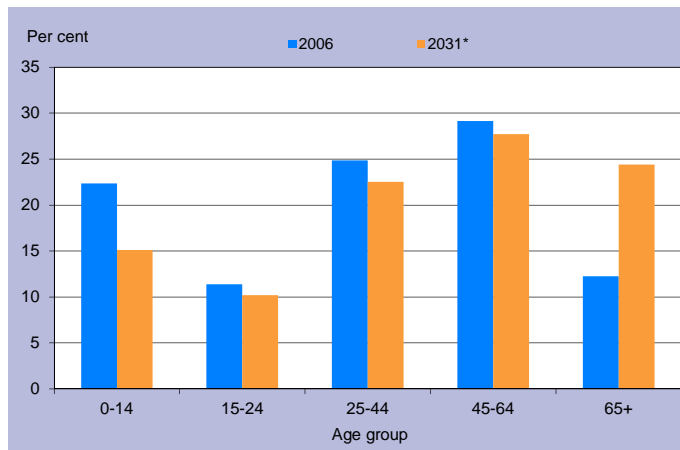


Table 4: Population by age group, Queensland

| | Age group | | | | | Median age |
|-------|-----------|---------|-----------|-----------|-----------|------------|
| | 0-14 | 15-24 | 25-44 | 45-64 | 65+ | |
| 2006 | 834,682 | 578,600 | 1,169,244 | 1,013,986 | 494,396 | 36.1 |
| | 20.4% | 14.1% | 28.6% | 24.8% | 12.1% | |
| 2031* | 1,205,836 | 814,688 | 1,703,235 | 1,578,741 | 1,290,350 | 40.2 |
| | 18.3% | 12.4% | 25.8% | 23.9% | 19.6% | |

* Medium series

Figure 4: Age distribution, Paroo (S), 2006 and 2031*



* Medium series

Household size

In 2006, the average household size for all occupied private dwellings in Paroo Shire Council was 2.4 persons. This compares with an average household size of 2.6 for all of Queensland in the same year (Table 6).

Table 6: Average household size by dwelling type

| Dwelling type | Average household size | | | |
|--------------------------------|------------------------|------|------|------|
| | Paroo (S) | | | Qld |
| | 1996 | 2001 | 2006 | 2006 |
| Separate house | 2.6 | 2.6 | 2.4 | 2.8 |
| Semi-detached, flats, etc | 1.6 | 1.5 | 1.4 | 1.8 |
| Other dwellings inc caravans | 2.0 | 1.8 | 1.8 | 1.8 |
| All occupied private dwellings | 2.5 | 2.5 | 2.4 | 2.6 |

Sources for the Population and Dwelling Profile:

ABS cat nos 3201.3, 3218.0, 3235.3, 8731.0 (preliminary as at December 2011); ABS unpublished births and deaths data, Census of Population and Housing, 1996, 2001 and 2006; Queensland Government Population Projections, 2011.

You are free to copy, communicate and adapt the work, as long as you attribute the authors. This document is licensed under a Creative Commons Attribution 2.5 Australia licence. To view a copy of this licence, visit <http://creativecommons.org/licenses/by/2.5/au>. To attribute this work, cite Population and Dwelling Profile, Paroo Shire Council, Office of Economic and Statistical Research, Queensland Treasury and Trade.

This profile is based on information available to the Office of Economic and Statistical Research at the time of preparation. It does not necessarily reflect the opinions or views of Queensland Treasury and Trade or the Queensland Government. Any statement, opinion or advice expressed or implied in this report is made in good faith but on the basis that the State of Queensland, and its agents and employees are not liable for any damage or loss whatsoever which may occur in relation to its use by the client or any third party.