

Population and Dwelling Profile

Palm Island Shire Council

Updated April 2012

Estimated resident population

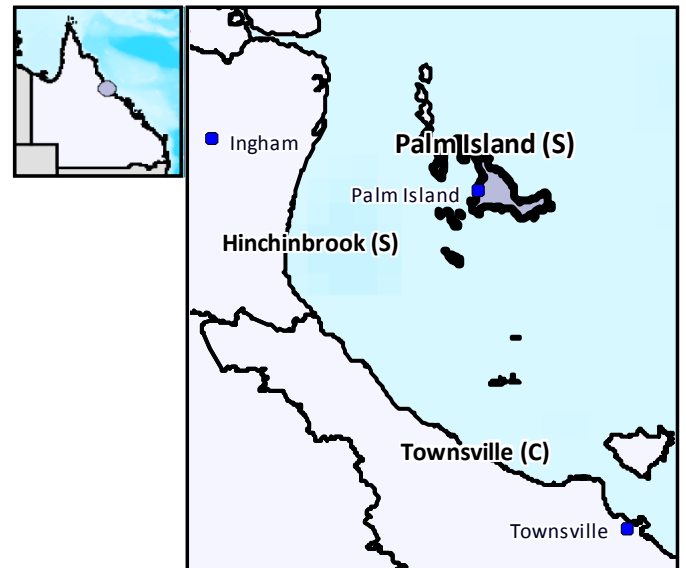
The preliminary estimated resident population of Palm Island Shire Council at 30 June 2011 was 2,258 persons, an increase of 41 persons or 1.8 per cent over the year. This compares with an increase of 30 persons or 1.4 per cent in the year to June 2010 (Table 1 and Figure 1).

Components of population change

In the year to June 2009, natural increase (births minus deaths) accounted for an increase of 65 persons while assumed net migration resulted in a loss of 71 persons (Table 1 and Figure 2).

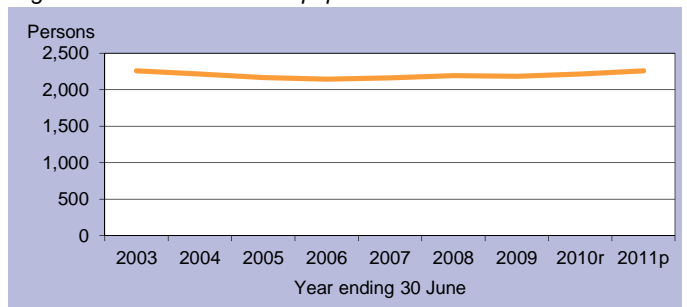
Population projections

Projections released in 2011 indicate that by 2016 the expected population of Palm Island Shire Council will be between 2,401 and 2,546 persons (Table 2 and Figure 3). By 2031 this is expected to change to between 2,779 and 3,350 persons (low and high series).



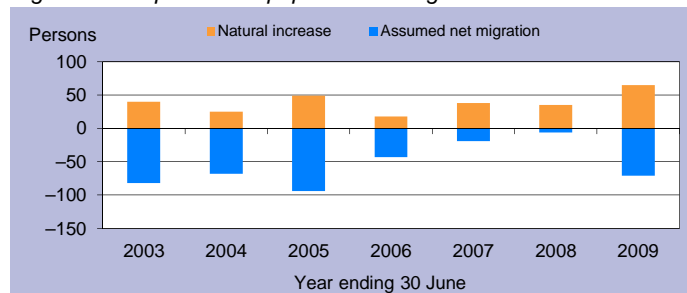
C = City S = Shire R = Regional Council T = Town

Figure 1: Estimated resident population



p = preliminary r = revised

Figure 2: Components of population change



p = preliminary r = revised

Figure 3: Population projections

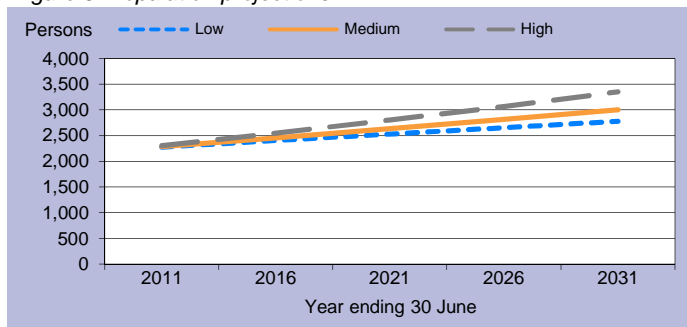


Table 1: Estimated resident population and components of change

Population trends		Annual population change				
As at 30 Jun	Est. resident population	Year to 30 Jun	Natural increase	Assumed net migration	Annual change	
					Total	Per cent
2003	2,258	2,003	40	-82	-42	-1.8
2004	2,215	2004	25	-68	-43	-1.9
2005	2,170	2005	49	-94	-45	-2.0
2006	2,145	2006	18	-43	-25	-1.2
2007	2,164	2007	38	-19	19	0.9
2008	2,193	2008	35	-6	29	1.3
2009	2,187	2009	65	-71	-6	-0.3
2010r	2,217	2010r	n.y.a.	n.y.a.	30	1.4
2011p	2,258	2011p	n.y.a.	n.y.a.	41	1.8

p = preliminary r = revised n.y.a. = not available

Table 2: Population projections

	Projected population			Average annual change (medium series)	
	Low series	Medium series	High series	Number	Per cent
2011	2,270	2,288	2,305	29	1.3
2016	2,401	2,456	2,546	34	1.4
2021	2,528	2,632	2,802	35	1.4
2026	2,654	2,812	3,066	36	1.3
2031	2,779	3,002	3,350	38	1.3

Table 3: Population by age group, Palm Island (S)

	Age group					Median age
	0-14	15-24	25-44	45-64	65+	
2006	776	402	655	286	26	22.3
	36.2%	18.7%	30.5%	13.3%	1.2%	
2031*	1,007	512	794	517	175	24.7
	33.5%	17.0%	26.4%	17.2%	5.8%	

* Medium series

Age structure

The median age of Palm Island Shire Council's population is projected to increase by 2.4 years from a median age of 22.3 years in 2006 to a median age of 24.7 years in 2031 (Table 3 and Figure 4). The median age of Queensland in 2031 is projected to be 40.2 years, under the medium series (Table 4).

Dwelling approvals

For the year ending December 2011, Palm Island Shire Council has had no reported new dwelling approvals (Table 5 and Figure 5).

Table 5: New dwelling approvals*

Year ending	New dwelling approvals			Total
	December	Houses	Other	
2005		0	0	0
2006		4	0	4
2007		0	0	0
2008		0	0	0
2009		1	4	5
2010		0	0	0
2011		0	0	0
Mar qtr 2011		0	0	0
Jun qtr 2011		0	0	0
Sep qtr 2011		0	0	0
Dec qtr 2011		0	0	0

* Excludes alterations/additions

Figure 5: Dwelling approvals

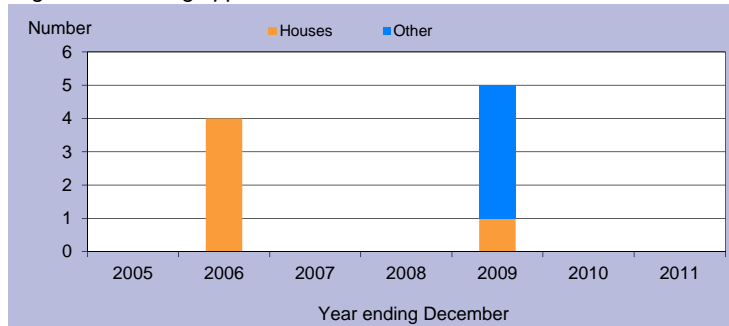
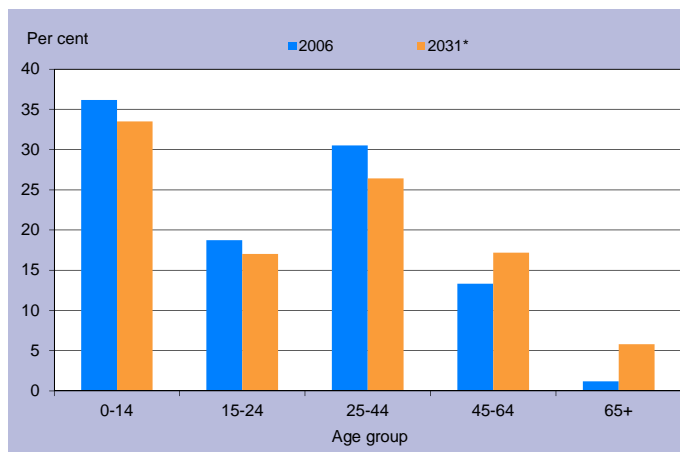


Table 4: Population by age group, Queensland

	Age group					Median age
	0-14	15-24	25-44	45-64	65+	
2006	834,682	578,600	1,169,244	1,013,986	494,396	36.1
	20.4%	14.1%	28.6%	24.8%	12.1%	
2031*	1,205,836	814,688	1,703,235	1,578,741	1,290,350	40.2
	18.3%	12.4%	25.8%	23.9%	19.6%	

* Medium series

Figure 4: Age distribution, Palm Island (S), 2006 and 2031*



* Medium series

Household size

In 2006, the average household size for all occupied private dwellings in Palm Island Shire Council was 5.4 persons. This compares with an average household size of 2.6 for all of Queensland in the same year (Table 6).

Table 6: Average household size by dwelling type

Dwelling type	Average household size			
	Palm Island (S)			Qld
	1996	2001	2006	2006
Separate house	6.7	6.4	5.6	2.8
Semi-detached, flats, etc	1.7	1.3	0.0	1.8
Other dwellings inc caravans	2.8	2.7	1.8	1.8
All occupied private dwellings	5.9	5.9	5.4	2.6

Sources for the Population and Dwelling Profile:

ABS cat nos 3201.3, 3218.0, 3235.3, 8731.0 (preliminary as at December 2011); ABS unpublished births and deaths data, Census of Population and Housing, 1996, 2001 and 2006; Queensland Government Population Projections, 2011.

You are free to copy, communicate and adapt the work, as long as you attribute the authors. This document is licensed under a Creative Commons Attribution 2.5 Australia licence. To view a copy of this licence, visit <http://creativecommons.org/licenses/by/2.5/au>. To attribute this work, cite Population and Dwelling Profile, Palm Island Shire Council, Office of Economic and Statistical Research, Queensland Treasury and Trade.

This profile is based on information available to the Office of Economic and Statistical Research at the time of preparation. It does not necessarily reflect the opinions or views of Queensland Treasury and Trade or the Queensland Government. Any statement, opinion or advice expressed or implied in this report is made in good faith but on the basis that the State of Queensland, and its agents and employees are not liable for any damage or loss whatsoever which may occur in relation to its use by the client or any third party.