

Population and Dwelling Profile

North Burnett Regional Council

Updated April 2012

Estimated resident population

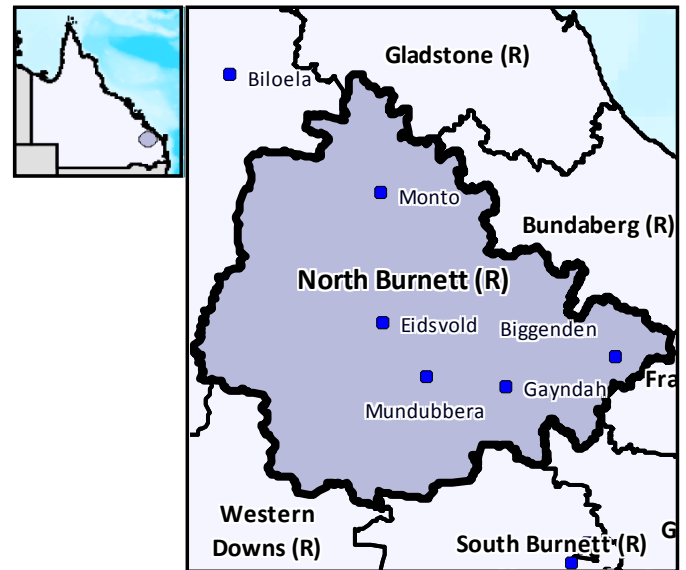
The preliminary estimated resident population of North Burnett Regional Council at 30 June 2011 was 10,832 persons, an increase of 48 persons or 0.4 per cent over the year. This compares with a decrease of 3 persons or 0.0 per cent in the year to June 2010 (Table 1 and Figure 1).

Components of population change

In the year to June 2009, natural increase (births minus deaths) accounted for an increase of 74 persons while assumed net migration resulted in a gain of 29 persons (Table 1 and Figure 2).

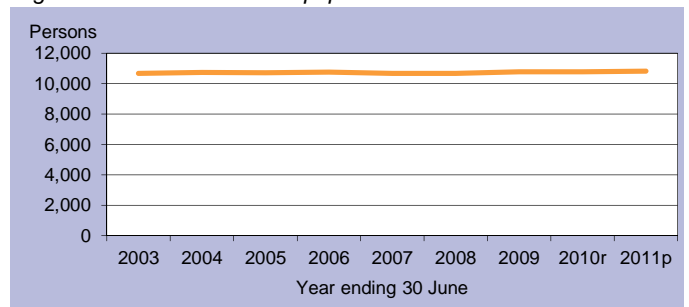
Population projections

Projections released in 2011 indicate that by 2016 the expected population of North Burnett Regional Council will be between 10,768 and 11,402 persons (Table 2 and Figure 3). By 2031 this is expected to change to between 11,098 and 12,823 persons (low and high series).



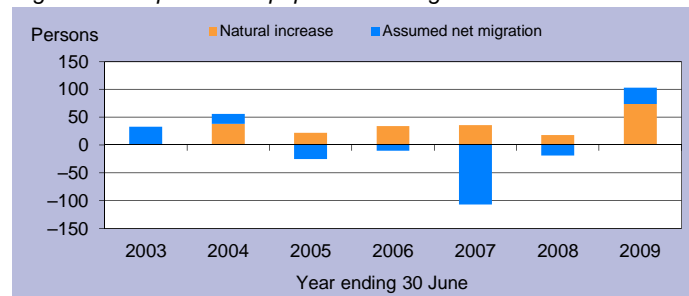
C = City S = Shire R = Regional Council T = Town

Figure 1: Estimated resident population



p = preliminary r = revised

Figure 2: Components of population change



p = preliminary r = revised

Figure 3: Population projections

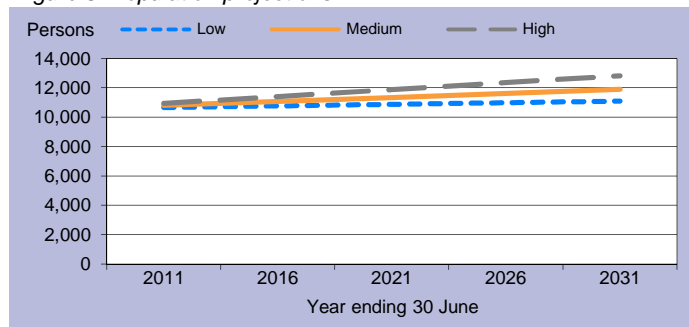


Table 1: Estimated resident population and components of change

Population trends		Annual population change				
As at 30 Jun	Est. resident population	Year to 30 Jun	Natural increase	Assumed net migration	Annual change	
					Total	Per cent
2003	10,679	2,003	0	33	33	0.3
2004	10,735	2004	38	18	56	0.5
2005	10,732	2005	22	-25	-3	-0.0
2006	10,756	2006	34	-10	24	0.2
2007	10,685	2007	36	-107	-71	-0.7
2008	10,684	2008	18	-19	-1	-0.0
2009	10,787	2009	74	29	103	1.0
2010r	10,784	2010r	n.y.a.	n.y.a.	-3	-0.0
2011p	10,832	2011p	n.y.a.	n.y.a.	48	0.4

p = preliminary r = revised n.y.a. = not available

Table 2: Population projections

	Projected population			Average annual change (medium series)	
	Low series	Medium series	High series	Number	Per cent
2011	10,664	10,804	10,934	10	0.1
2016	10,768	11,066	11,402	52	0.5
2021	10,876	11,342	11,881	55	0.5
2026	10,986	11,621	12,356	56	0.5
2031	11,098	11,899	12,823	56	0.5

Table 3: Population by age group, North Burnett (R)

	Age group					Median age
	0-14	15-24	25-44	45-64	65+	
2006	2,189	1,119	2,527	3,095	1,826	41.8
	20.4%	10.4%	23.5%	28.8%	17.0%	
2031*	1,961	1,008	2,481	3,179	3,275	48.3
	16.5%	8.5%	20.8%	26.7%	27.5%	

* Medium series

Age structure

The median age of North Burnett Regional Council's population is projected to increase by 6.5 years from a median age of 41.8 years in 2006 to a median age of 48.3 years in 2031 (Table 3 and Figure 4). The median age of Queensland in 2031 is projected to be 40.2 years, under the medium series (Table 4).

Dwelling approvals

There were 25 new dwelling approvals in North Burnett Regional Council over the year ending December 2011, a decrease of 34.2 per cent from the previous year (38) (Table 5). Separate houses made up 100.0 per cent of all new dwelling approvals over the year ending December 2011 (Figure 5).

Table 5: New dwelling approvals*

Year ending	New dwelling approvals		
	Houses	Other	Total
December			
2005	35	2	37
2006	23	2	25
2007	42	0	42
2008	21	0	21
2009	26	0	26
2010	34	4	38
2011	25	0	25
Mar qtr 2011	2	0	2
Jun qtr 2011	6	0	6
Sep qtr 2011	5	0	5
Dec qtr 2011	12	0	12

* Excludes alterations/additions

Figure 5: Dwelling approvals

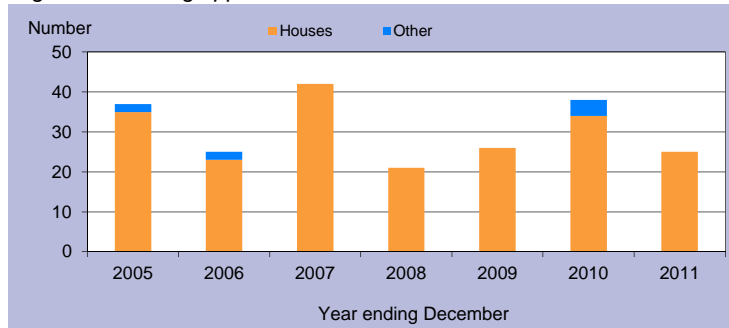
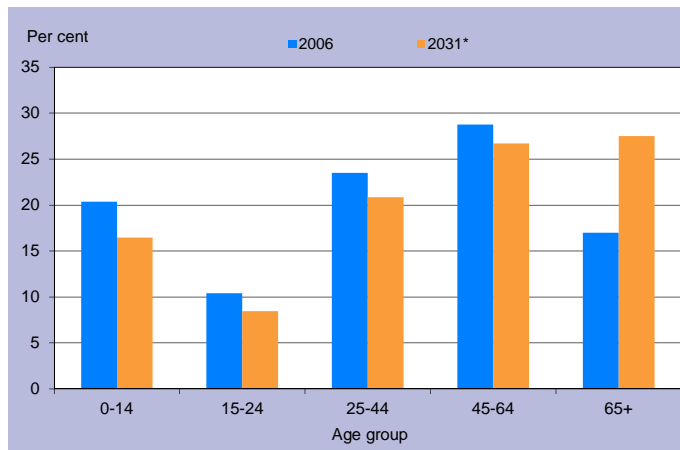


Table 4: Population by age group, Queensland

	Age group					Median age
	0-14	15-24	25-44	45-64	65+	
2006	834,682	578,600	1,169,244	1,013,986	494,396	36.1
	20.4%	14.1%	28.6%	24.8%	12.1%	
2031*	1,205,836	814,688	1,703,235	1,578,741	1,290,350	40.2
	18.3%	12.4%	25.8%	23.9%	19.6%	

* Medium series

Figure 4: Age distribution, North Burnett (R), 2006 and 2031*



* Medium series

Household size

In 2006, the average household size for all occupied private dwellings in North Burnett Regional Council was 2.3 persons. This compares with an average household size of 2.6 for all of Queensland in the same year (Table 6).

Table 6: Average household size by dwelling type

Dwelling type	Average household size			
	North Burnett (R)			Qld
	1996	2001	2006	2006
Separate house	2.7	2.5	2.4	2.8
Semi-detached, flats, etc	1.6	1.5	1.4	1.8
Other dwellings inc caravans	1.9	1.6	1.9	1.8
All occupied private dwellings	2.6	2.4	2.3	2.6

Sources for the Population and Dwelling Profile:

ABS cat nos 3201.3, 3218.0, 3235.3, 8731.0 (preliminary as at December 2011); ABS unpublished births and deaths data, Census of Population and Housing, 1996, 2001 and 2006; Queensland Government Population Projections, 2011.

You are free to copy, communicate and adapt the work, as long as you attribute the authors. This document is licensed under a Creative Commons Attribution 2.5 Australia licence. To view a copy of this licence, visit <http://creativecommons.org/licenses/by/2.5/au>. To attribute this work, cite Population and Dwelling Profile, North Burnett Regional Council, Office of Economic and Statistical Research, Queensland Treasury and Trade.

This profile is based on information available to the Office of Economic and Statistical Research at the time of preparation. It does not necessarily reflect the opinions or views of Queensland Treasury and Trade or the Queensland Government. Any statement, opinion or advice expressed or implied in this report is made in good faith but on the basis that the State of Queensland, and its agents and employees are not liable for any damage or loss whatsoever which may occur in relation to its use by the client or any third party.