

# Population and Dwelling Profile

## McKinlay Shire Council

Updated April 2012

### Estimated resident population

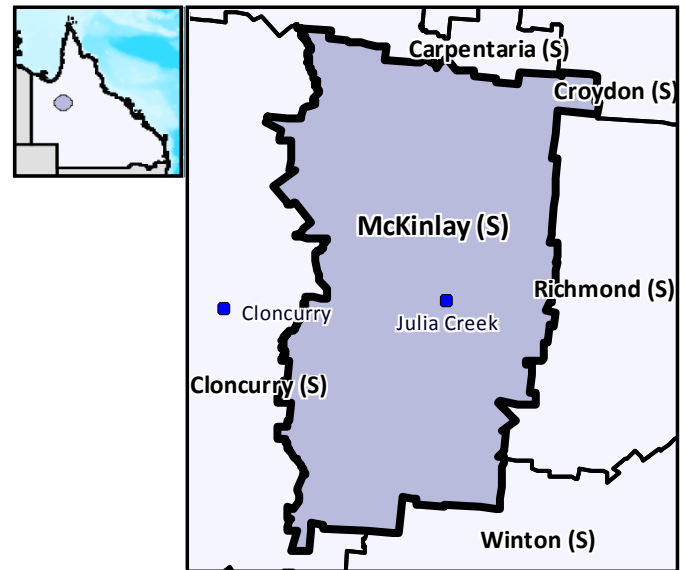
The preliminary estimated resident population of McKinlay Shire Council at 30 June 2011 was 951 persons, an increase of 9 persons or 1.0 per cent over the year. This compares with a decrease of 2 persons or 0.2 per cent in the year to June 2010 (Table 1 and Figure 1).

### Components of population change

In the year to June 2009, natural increase (births minus deaths) accounted for an increase of 8 persons while assumed net migration resulted in a loss of 28 persons (Table 1 and Figure 2).

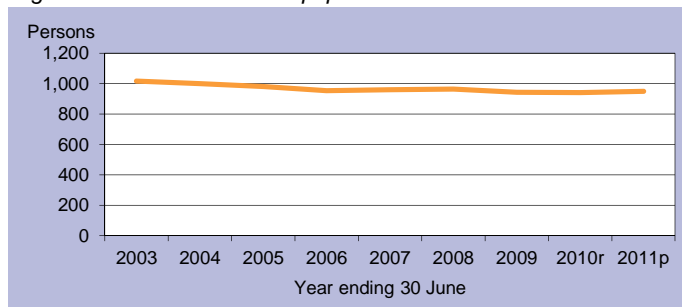
### Population projections

Projections released in 2011 indicate that by 2016 the expected population of McKinlay Shire Council will be between 868 and 981 persons (Table 2 and Figure 3). By 2031 this is expected to change to between 747 and 1,091 persons (low and high series).



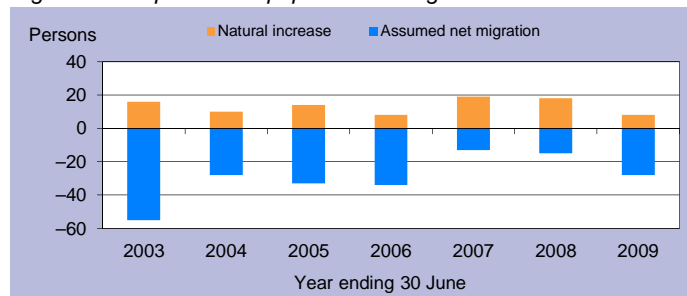
C = City S = Shire R = Regional Council T = Town

Figure 1: Estimated resident population



p = preliminary r = revised

Figure 2: Components of population change



p = preliminary r = revised

Figure 3: Population projections

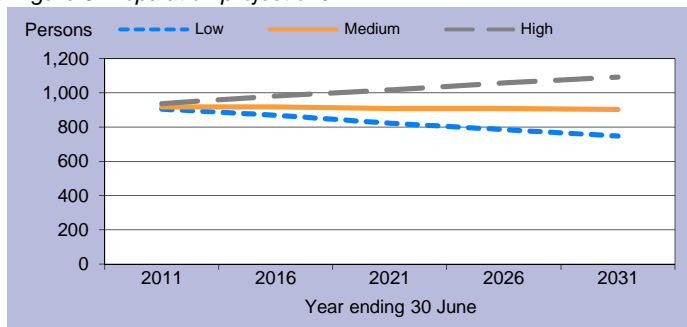


Table 1: Estimated resident population and components of change

Population trends		Annual population change				
As at 30 Jun	Est. resident population	Year to 30 Jun	Natural increase	Assumed net migration	Annual change Total	Annual change Per cent
2003	1,018	2,003	16	-55	-39	-3.7
2004	1,000	2004	10	-28	-18	-1.8
2005	981	2005	14	-33	-19	-1.9
2006	955	2006	8	-34	-26	-2.7
2007	961	2007	19	-13	6	0.6
2008	964	2008	18	-15	3	0.3
2009	944	2009	8	-28	-20	-2.1
2010r	942	2010r	n.y.a.	n.y.a.	-2	-0.2
2011p	951	2011p	n.y.a.	n.y.a.	9	1.0

p = preliminary r = revised n.y.a. = not available

Table 2: Population projections

	Projected population			Average annual change (medium series)	
	Low series	Medium series	High series	Number	Per cent
2011	904	918	936	-7	-0.8
2016	868	918	981	0	0.0
2021	822	908	1,017	-2	-0.2
2026	785	907	1,057	0	0.0
2031	747	902	1,091	-1	-0.1

Table 3: Population by age group, McKinlay (S)

	Age group					Median age
	0-14	15-24	25-44	45-64	65+	
2006	180	125	303	249	98	36.2
	18.8%	13.1%	31.7%	26.1%	10.3%	
2031*	144	102	134	340	184	49.1
	15.9%	11.3%	14.8%	37.6%	20.4%	

\* Medium series

### Age structure

The median age of McKinlay Shire Council's population is projected to increase by 12.9 years from a median age of 36.2 years in 2006 to a median age of 49.1 years in 2031 (Table 3 and Figure 4). The median age of Queensland in 2031 is projected to be 40.2 years, under the medium series (Table 4).

### Dwelling approvals

For the year ending December 2011, McKinlay Shire Council has had no reported new dwelling approvals (Table 5 and Figure 5).

Table 5: New dwelling approvals\*

Year ending	New dwelling approvals		
	Houses	Other	Total
December			
2005	0	0	0
2006	1	0	1
2007	2	0	2
2008	0	0	0
2009	1	0	1
2010	1	0	1
2011	0	0	0
Mar qtr 2011	0	0	0
Jun qtr 2011	0	0	0
Sep qtr 2011	0	0	0
Dec qtr 2011	0	0	0

\* Excludes alterations/additions

Figure 5: Dwelling approvals

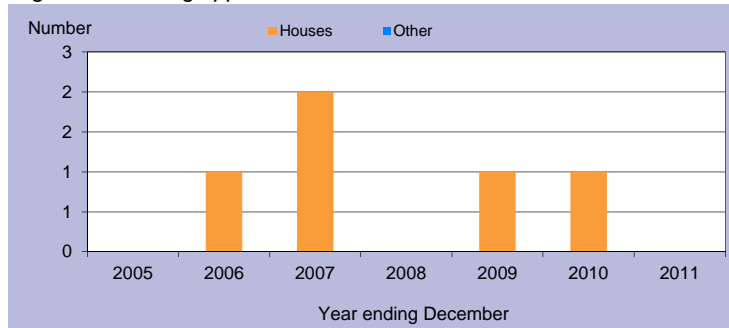
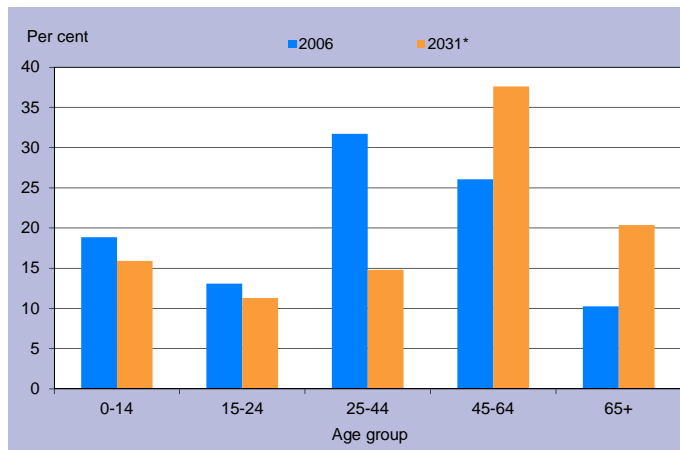


Table 4: Population by age group, Queensland

	Age group					Median age
	0-14	15-24	25-44	45-64	65+	
2006	834,682	578,600	1,169,244	1,013,986	494,396	36.1
	20.4%	14.1%	28.6%	24.8%	12.1%	
2031*	1,205,836	814,688	1,703,235	1,578,741	1,290,350	40.2
	18.3%	12.4%	25.8%	23.9%	19.6%	

\* Medium series

Figure 4: Age distribution, McKinlay (S), 2006 and 2031\*



\* Medium series

### Household size

In 2006, the average household size for all occupied private dwellings in McKinlay Shire Council was 2.5 persons. This compares with an average household size of 2.6 for all of Queensland in the same year (Table 6).

Table 6: Average household size by dwelling type

Dwelling type	Average household size			
	McKinlay (S)			Qld
	1996	2001	2006	2006
Separate house	3.3	2.8	2.6	2.8
Semi-detached, flats, etc	1.8	1.9	2.5	1.8
Other dwellings inc caravans	1.9	1.9	1.8	1.8
All occupied private dwellings	2.6	2.7	2.5	2.6

Sources for the Population and Dwelling Profile:

ABS cat nos 3201.3, 3218.0, 3235.3, 8731.0 (preliminary as at December 2011); ABS unpublished births and deaths data, Census of Population and Housing, 1996, 2001 and 2006; Queensland Government Population Projections, 2011.

You are free to copy, communicate and adapt the work, as long as you attribute the authors. This document is licensed under a Creative Commons Attribution 2.5 Australia licence. To view a copy of this licence, visit <http://creativecommons.org/licenses/by/2.5/au>. To attribute this work, cite Population and Dwelling Profile, McKinlay Shire Council, Office of Economic and Statistical Research, Queensland Treasury and Trade.

This profile is based on information available to the Office of Economic and Statistical Research at the time of preparation. It does not necessarily reflect the opinions or views of Queensland Treasury and Trade or the Queensland Government. Any statement, opinion or advice expressed or implied in this report is made in good faith but on the basis that the State of Queensland, and its agents and employees are not liable for any damage or loss whatsoever which may occur in relation to its use by the client or any third party.