

Population and Dwelling Profile

Hinchinbrook Shire Council

Updated April 2012

Estimated resident population

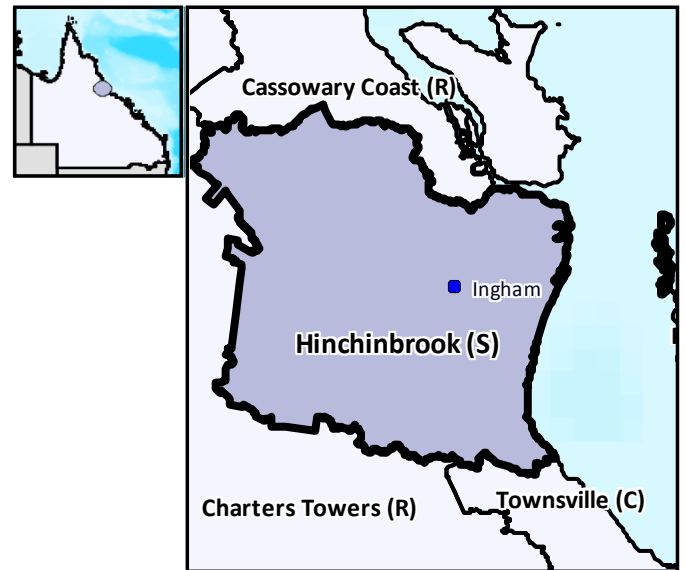
The preliminary estimated resident population of Hinchinbrook Shire Council at 30 June 2011 was 12,258 persons, an increase of 10 persons or 0.1 per cent over the year. This compares with a decrease of 35 persons or 0.3 per cent in the year to June 2010 (Table 1 and Figure 1).

Components of population change

In the year to June 2009, natural increase (births minus deaths) accounted for an increase of 14 persons while assumed net migration resulted in a gain of 20 persons (Table 1 and Figure 2).

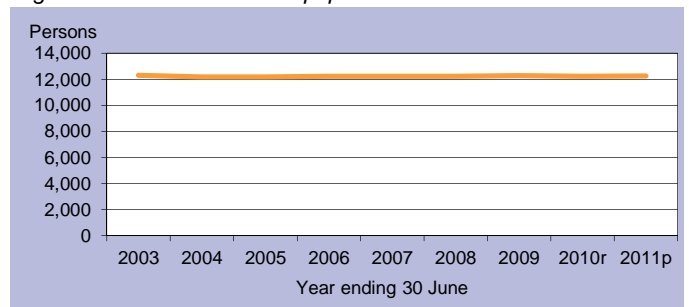
Population projections

Projections released in 2011 indicate that by 2016 the expected population of Hinchinbrook Shire Council will be between 12,437 and 12,859 persons (Table 2 and Figure 3). By 2031 this is expected to change to between 12,594 and 14,017 persons (low and high series).



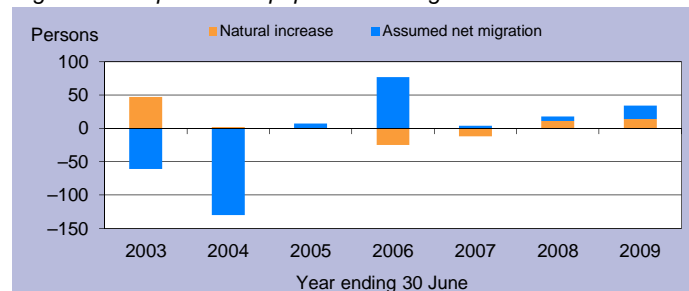
C = City S = Shire R = Regional Council T = Town

Figure 1: Estimated resident population



p = preliminary r = revised

Figure 2: Components of population change



p = preliminary r = revised

Figure 3: Population projections

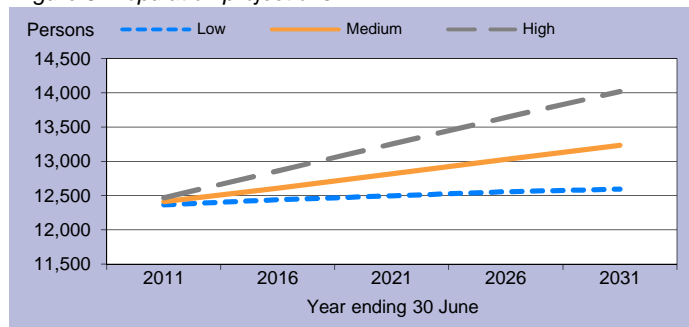


Table 1: Estimated resident population and components of change

Population trends		Annual population change				
As at 30 Jun	Est. resident population	Year to 30 Jun	Natural increase	Assumed net migration	Annual change	
					Total	Per cent
2003	12,308	2,003	47	-61	-14	-0.1
2004	12,180	2004	2	-130	-128	-1.0
2005	12,187	2005	0	7	7	0.1
2006	12,239	2006	-25	77	52	0.4
2007	12,231	2007	-12	4	-8	-0.1
2008	12,249	2008	11	7	18	0.1
2009	12,283	2009	14	20	34	0.3
2010r	12,248	2010r	n.y.a.	n.y.a.	-35	-0.3
2011p	12,258	2011p	n.y.a.	n.y.a.	10	0.1

p = preliminary r = revised n.y.a. = not available

Table 2: Population projections

	Projected population			Average annual change (medium series)	
	Low series	Medium series	High series	Number	Per cent
2011	12,364	12,409	12,467	34	0.3
2016	12,437	12,608	12,859	40	0.3
2021	12,496	12,815	13,251	41	0.3
2026	12,554	13,028	13,641	43	0.3
2031	12,594	13,231	14,017	41	0.3

Table 3: Population by age group, Hinchinbrook (S)

	Age group					Median age
	0-14	15-24	25-44	45-64	65+	
2006	2,471	1,244	2,738	3,353	2,433	43.2
	20.2%	10.2%	22.4%	27.4%	19.9%	
2031*	1,878	1,168	2,235	2,784	5,166	57.2
	14.2%	8.8%	16.9%	21.0%	39.0%	

* Medium series

Age structure

The median age of Hinchinbrook Shire Council's population is projected to increase by 14.0 years from a median age of 43.2 years in 2006 to a median age of 57.2 years in 2031 (Table 3 and Figure 4). The median age of Queensland in 2031 is projected to be 40.2 years, under the medium series (Table 4).

Dwelling approvals

There were 44 new dwelling approvals in Hinchinbrook Shire Council over the year ending December 2011, a decrease of 8.3 per cent from the previous year (48) (Table 5). Separate houses made up 90.9 per cent of all new dwelling approvals over the year ending December 2011 (Figure 5).

Table 5: New dwelling approvals*

Year ending	New dwelling approvals			
	December	Houses	Other	Total
2005		22	0	22
2006		28	0	28
2007		25	6	31
2008		35	0	35
2009		34	0	34
2010		32	16	48
2011		40	4	44
Mar qtr 2011		4	0	4
Jun qtr 2011		8	0	8
Sep qtr 2011		14	2	16
Dec qtr 2011		14	2	16

* Excludes alterations/additions

Figure 5: Dwelling approvals

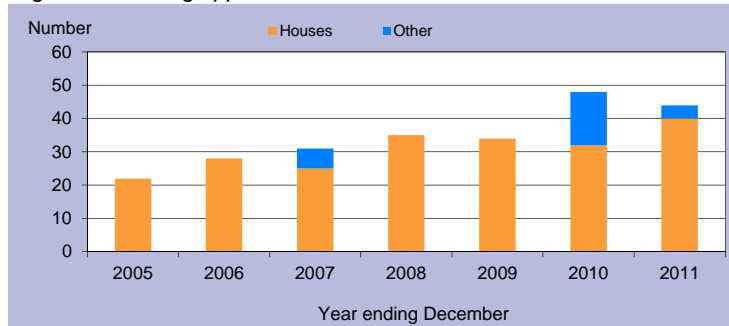
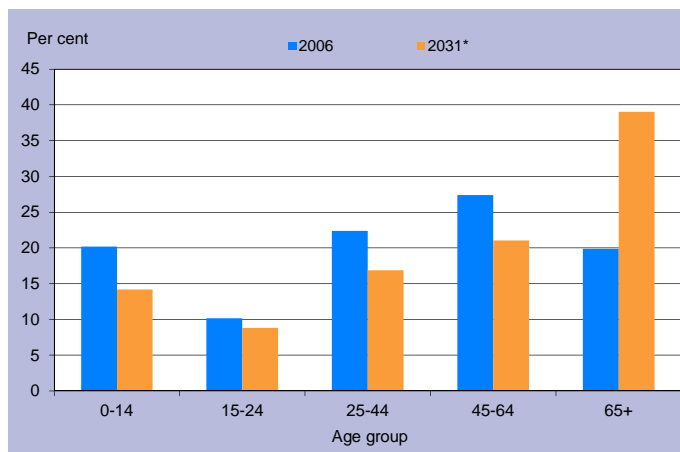


Table 4: Population by age group, Queensland

	Age group					Median age
	0-14	15-24	25-44	45-64	65+	
2006	834,682	578,600	1,169,244	1,013,986	494,396	36.1
	20.4%	14.1%	28.6%	24.8%	12.1%	
2031*	1,205,836	814,688	1,703,235	1,578,741	1,290,350	40.2
	18.3%	12.4%	25.8%	23.9%	19.6%	

* Medium series

Figure 4: Age distribution, Hinchinbrook (S), 2006 and 2031*



* Medium series

Household size

In 2006, the average household size for all occupied private dwellings in Hinchinbrook Shire Council was 2.4 persons. This compares with an average household size of 2.6 for all of Queensland in the same year (Table 6).

Table 6: Average household size by dwelling type

Dwelling type	Average household size			
	Hinchinbrook (S)			Qld
	1996	2001	2006	2006
Separate house	2.8	2.6	2.5	2.8
Semi-detached, flats, etc	1.8	1.4	1.6	1.8
Other dwellings inc caravans	1.9	1.9	1.9	1.8
All occupied private dwellings	2.6	2.5	2.4	2.6

Sources for the Population and Dwelling Profile:

ABS cat nos 3201.3, 3218.0, 3235.3, 8731.0 (preliminary as at December 2011); ABS unpublished births and deaths data, Census of Population and Housing, 1996, 2001 and 2006; Queensland Government Population Projections, 2011.

You are free to copy, communicate and adapt the work, as long as you attribute the authors. This document is licensed under a Creative Commons Attribution 2.5 Australia licence. To view a copy of this licence, visit <http://creativecommons.org/licenses/by/2.5/au>. To attribute this work, cite Population and Dwelling Profile, Hinchinbrook Shire Council, Office of Economic and Statistical Research, Queensland Treasury and Trade.

This profile is based on information available to the Office of Economic and Statistical Research at the time of preparation. It does not necessarily reflect the opinions or views of Queensland Treasury and Trade or the Queensland Government. Any statement, opinion or advice expressed or implied in this report is made in good faith but on the basis that the State of Queensland, and its agents and employees are not liable for any damage or loss whatsoever which may occur in relation to its use by the client or any third party.