

# Population and Dwelling Profile

## Goondiwindi Regional Council

Updated April 2012

### Estimated resident population

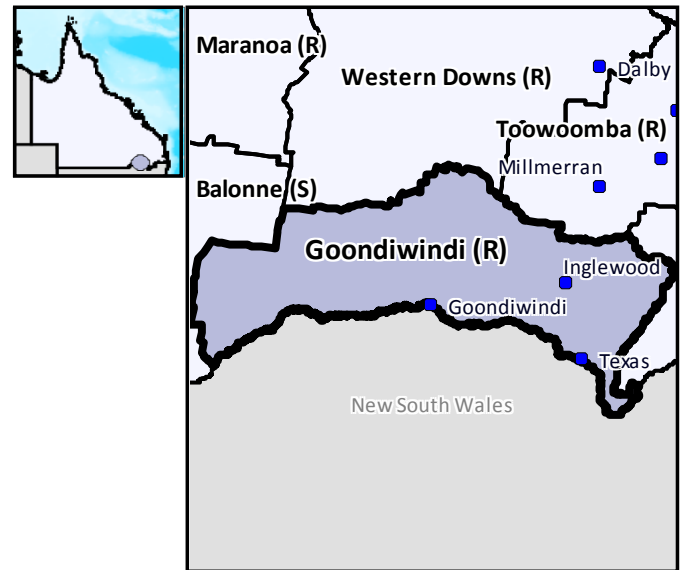
The preliminary estimated resident population of Goondiwindi Regional Council at 30 June 2011 was 11,437 persons, an increase of 45 persons or 0.4 per cent over the year. This compares with an increase of 204 persons or 1.8 per cent in the year to June 2010 (Table 1 and Figure 1).

### Components of population change

In the year to June 2009, natural increase (births minus deaths) accounted for an increase of 110 persons while assumed net migration resulted in a gain of 55 persons (Table 1 and Figure 2).

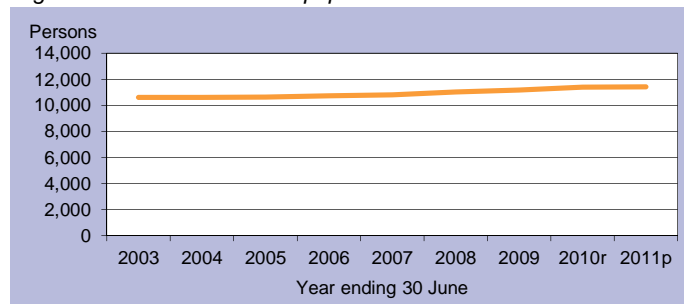
### Population projections

Projections released in 2011 indicate that by 2016 the expected population of Goondiwindi Regional Council will be between 11,620 and 12,281 persons (Table 2 and Figure 3). By 2031 this is expected to change to between 12,217 and 14,317 persons (low and high series).



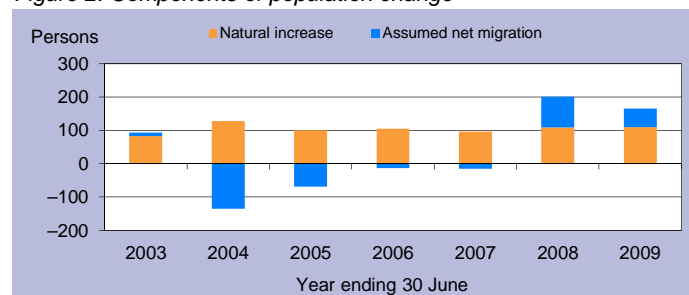
C = City S = Shire R = Regional Council T = Town

Figure 1: Estimated resident population



p = preliminary r = revised

Figure 2: Components of population change



p = preliminary r = revised

Figure 3: Population projections

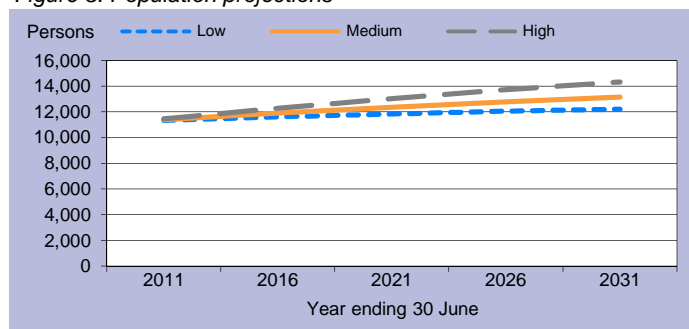


Table 1: Estimated resident population and components of change

Population trends		Annual population change				
As at 30 Jun	Est. resident population	Year to 30 Jun	Natural increase	Assumed net migration	Annual change	
					Total	Per cent
2003	10,625	2,003	83	10	93	0.9
2004	10,618	2004	128	-135	-7	-0.1
2005	10,649	2005	100	-69	31	0.3
2006	10,741	2006	105	-13	92	0.9
2007	10,822	2007	96	-15	81	0.8
2008	11,023	2008	109	92	201	1.9
2009	11,188	2009	110	55	165	1.5
2010r	11,392	2010r	n.y.a.	n.y.a.	204	1.8
2011p	11,437	2011p	n.y.a.	n.y.a.	45	0.4

p = preliminary r = revised n.y.a. = not available

Table 2: Population projections

	Projected population			Average annual change (medium series)	
	Low series	Medium series	High series	Number	Per cent
2011	11,337	11,392	11,452	130	1.2
2016	11,620	11,906	12,281	103	0.9
2021	11,844	12,352	13,017	89	0.7
2026	12,058	12,784	13,729	86	0.7
2031	12,217	13,140	14,317	71	0.6

Table 3: Population by age group, Goondiwindi (R)

	Age group					Median age
	0-14	15-24	25-44	45-64	65+	
2006	2,474	1,143	3,007	2,642	1,475	36.7
	23.0%	10.6%	28.0%	24.6%	13.7%	
2031*	2,250	1,262	3,239	3,240	3,149	43.7
	17.1%	9.6%	24.6%	24.7%	24.0%	

\* Medium series

### Age structure

The median age of Goondiwindi Regional Council's population is projected to increase by 7.0 years from a median age of 36.7 years in 2006 to a median age of 43.7 years in 2031 (Table 3 and Figure 4). The median age of Queensland in 2031 is projected to be 40.2 years, under the medium series (Table 4).

### Dwelling approvals

There were 14 new dwelling approvals in Goondiwindi Regional Council over the year ending December 2011, a decrease of 44.0 per cent from the previous year (25) (Table 5). Separate houses made up 100.0 per cent of all new dwelling approvals over the year ending December 2011 (Figure 5).

Table 5: New dwelling approvals\*

Year ending	New dwelling approvals		
	Houses	Other	Total
December			
2005	35	11	46
2006	52	2	54
2007	58	0	58
2008	27	14	41
2009	27	0	27
2010	23	2	25
2011	14	0	14
Mar qtr 2011	2	0	2
Jun qtr 2011	5	0	5
Sep qtr 2011	5	0	5
Dec qtr 2011	2	0	2

\* Excludes alterations/additions

Figure 5: Dwelling approvals

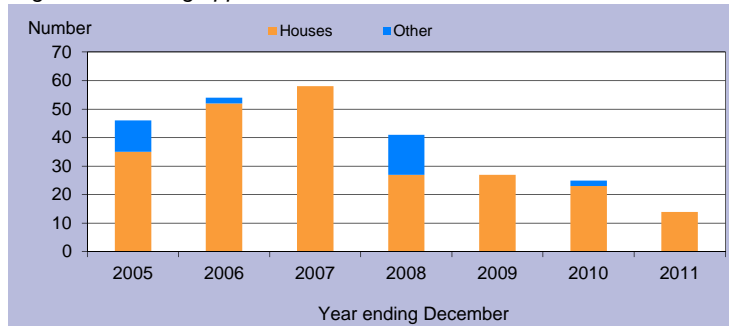
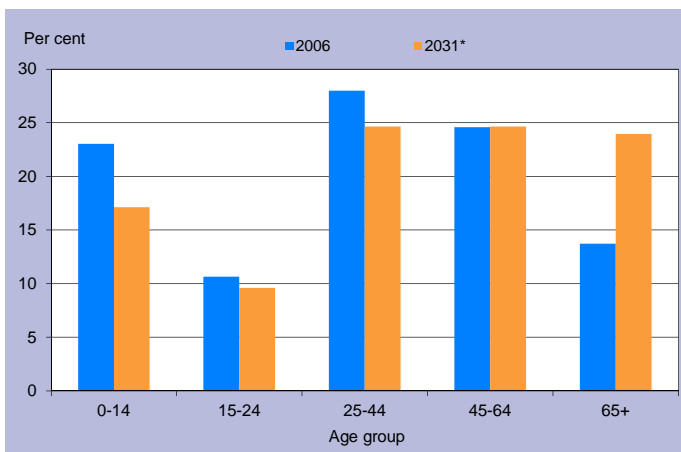


Table 4: Population by age group, Queensland

	Age group					Median age
	0-14	15-24	25-44	45-64	65+	
2006	834,682	578,600	1,169,244	1,013,986	494,396	36.1
	20.4%	14.1%	28.6%	24.8%	12.1%	
2031*	1,205,836	814,688	1,703,235	1,578,741	1,290,350	40.2
	18.3%	12.4%	25.8%	23.9%	19.6%	

\* Medium series

Figure 4: Age distribution, Goondiwindi (R), 2006 and 2031\*



\* Medium series

### Household size

In 2006, the average household size for all occupied private dwellings in Goondiwindi Regional Council was 2.5 persons. This compares with an average household size of 2.6 for all of Queensland in the same year (Table 6).

Table 6: Average household size by dwelling type

Dwelling type	Average household size			
	Goondiwindi (R)			Qld
	1996	2001	2006	2006
Separate house	2.7	2.7	2.6	2.8
Semi-detached, flats, etc	1.8	1.6	2.0	1.8
Other dwellings inc caravans	1.8	1.9	2.1	1.8
All occupied private dwellings	2.6	2.5	2.5	2.6

Sources for the Population and Dwelling Profile:

ABS cat nos 3201.3, 3218.0, 3235.3, 8731.0 (preliminary as at December 2011); ABS unpublished births and deaths data, Census of Population and Housing, 1996, 2001 and 2006; Queensland Government Population Projections, 2011.

You are free to copy, communicate and adapt the work, as long as you attribute the authors. This document is licensed under a Creative Commons Attribution 2.5 Australia licence. To view a copy of this licence, visit <http://creativecommons.org/licenses/by/2.5/au>. To attribute this work, cite Population and Dwelling Profile, Goondiwindi Regional Council, Office of Economic and Statistical Research, Queensland Treasury and Trade.

This profile is based on information available to the Office of Economic and Statistical Research at the time of preparation. It does not necessarily reflect the opinions or views of Queensland Treasury and Trade or the Queensland Government. Any statement, opinion or advice expressed or implied in this report is made in good faith but on the basis that the State of Queensland, and its agents and employees are not liable for any damage or loss whatsoever which may occur in relation to its use by the client or any third party.