

# Population and Dwelling Profile

## Cook Shire Council

Updated April 2012

### Estimated resident population

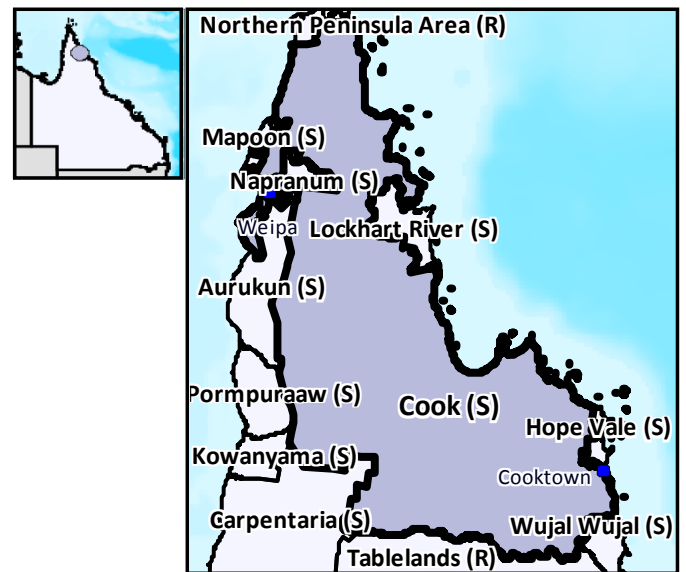
The preliminary estimated resident population of Cook Shire Council at 30 June 2011 was 4,222 persons, an increase of 253 persons or 6.4 per cent over the year. This compares with an increase of 70 persons or 1.8 per cent in the year to June 2010 (Table 1 and Figure 1).

### Components of population change

In the year to June 2009, natural increase (births minus deaths) accounted for an increase of 38 persons while assumed net migration resulted in a gain of 36 persons (Table 1 and Figure 2).

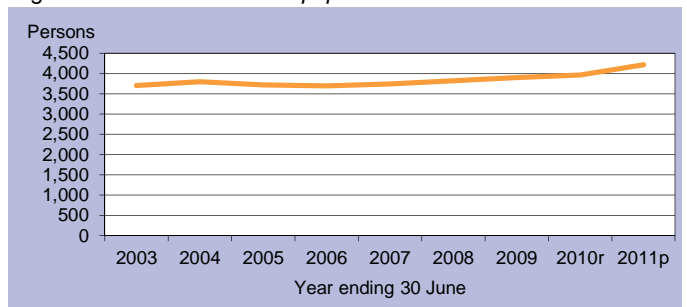
### Population projections

Projections released in 2011 indicate that by 2016 the expected population of Cook Shire Council will be between 4,236 and 4,361 persons (Table 2 and Figure 3). By 2031 this is expected to change to between 4,902 and 5,489 persons (low and high series).



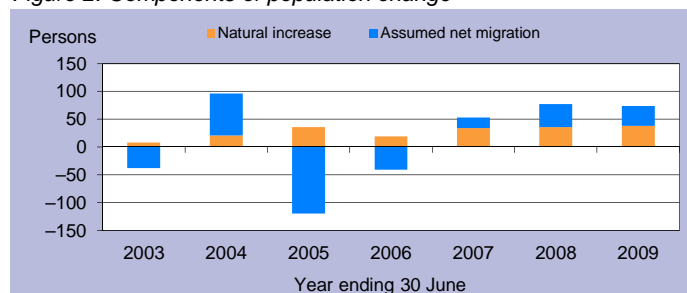
C = City S = Shire R = Regional Council T = Town

Figure 1: Estimated resident population



p = preliminary r = revised

Figure 2: Components of population change



p = preliminary r = revised

Figure 3: Population projections

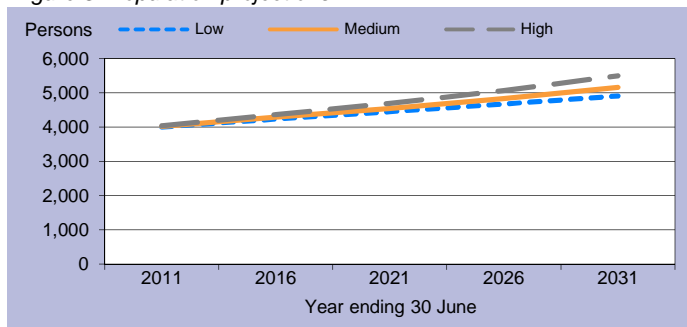


Table 1: Estimated resident population and components of change

Population trends		Annual population change				
As at 30 Jun	Est. resident population	Year to 30 Jun	Natural increase	Assumed net migration	Annual change	
					Total	Per cent
2003	3,705	2,003	8	-38	-30	-0.8
2004	3,801	2004	21	75	96	2.6
2005	3,717	2005	36	-120	-84	-2.2
2006	3,695	2006	19	-41	-22	-0.6
2007	3,748	2007	34	19	53	1.4
2008	3,825	2008	36	41	77	2.1
2009	3,899	2009	38	36	74	1.9
2010r	3,969	2010r	n.y.a.	n.y.a.	70	1.8
2011p	4,222	2011p	n.y.a.	n.y.a.	253	6.4

p = preliminary r = revised n.y.a. = not available

Table 2: Population projections

	Projected population			Average annual change (medium series)	
	Low series	Medium series	High series	Number	Per cent
2011	3,997	4,018	4,031	65	1.7
2016	4,236	4,287	4,361	54	1.3
2021	4,448	4,544	4,692	51	1.2
2026	4,667	4,831	5,066	57	1.2
2031	4,902	5,157	5,489	65	1.3

Table 3: Population by age group, Cook (S)

	Age group					Median age
	0-14	15-24	25-44	45-64	65+	
2006	738	334	1,062	1,215	346	40.0
	20.0%	9.0%	28.7%	32.9%	9.4%	
2031*	758	469	866	1,573	1,489	53.2
	14.7%	9.1%	16.8%	30.5%	28.9%	

\* Medium series

### Age structure

The median age of Cook Shire Council's population is projected to increase by 13.2 years from a median age of 40.0 years in 2006 to a median age of 53.2 years in 2031 (Table 3 and Figure 4). The median age of Queensland in 2031 is projected to be 40.2 years, under the medium series (Table 4).

### Dwelling approvals

There were 22 new dwelling approvals in Cook Shire Council over the year ending December 2011, an increase of 57.1 per cent from the previous year (14) (Table 5). Separate houses made up 68.2 per cent of all new dwelling approvals over the year ending December 2011 (Figure 5).

Table 5: New dwelling approvals\*

Year ending	New dwelling approvals		
	Houses	Other	Total
December			
2005	36	8	44
2006	28	0	28
2007	27	6	33
2008	16	10	26
2009	23	5	28
2010	14	0	14
2011	15	7	22
Mar qtr 2011	2	2	4
Jun qtr 2011	3	5	8
Sep qtr 2011	5	0	5
Dec qtr 2011	5	0	5

\* Excludes alterations/additions

Figure 5: Dwelling approvals

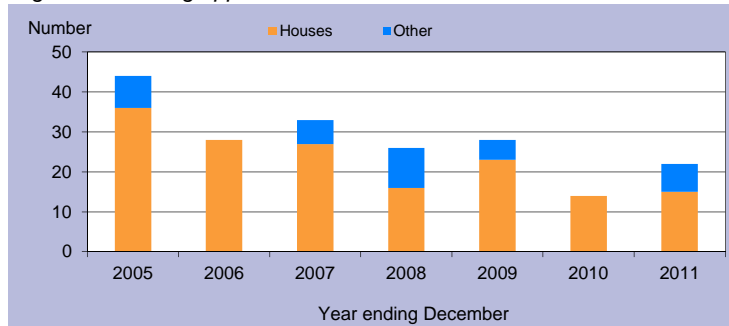
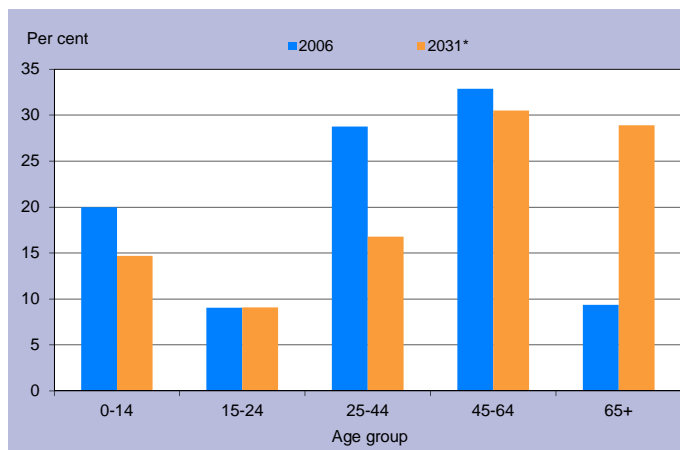


Table 4: Population by age group, Queensland

	Age group					Median age
	0-14	15-24	25-44	45-64	65+	
2006	834,682	578,600	1,169,244	1,013,986	494,396	36.1
	20.4%	14.1%	28.6%	24.8%	12.1%	
2031*	1,205,836	814,688	1,703,235	1,578,741	1,290,350	40.2
	18.3%	12.4%	25.8%	23.9%	19.6%	

\* Medium series

Figure 4: Age distribution, Cook (S), 2006 and 2031\*



\* Medium series

### Household size

In 2006, the average household size for all occupied private dwellings in Cook Shire Council was 2.3 persons. This compares with an average household size of 2.6 for all of Queensland in the same year (Table 6).

Table 6: Average household size by dwelling type

Dwelling type	Average household size			
	Cook (S)			Qld
	1996	2001	2006	2006
Separate house	3.4	3.7	2.5	2.8
Semi-detached, flats, etc	1.7	2.3	1.7	1.8
Other dwellings inc caravans	1.9	2.1	1.9	1.8
All occupied private dwellings	3.1	3.2	2.3	2.6

Sources for the Population and Dwelling Profile:

ABS cat nos 3201.3, 3218.0, 3235.3, 8731.0 (preliminary as at December 2011); ABS unpublished births and deaths data, Census of Population and Housing, 1996, 2001 and 2006; Queensland Government Population Projections, 2011.

You are free to copy, communicate and adapt the work, as long as you attribute the authors. This document is licensed under a Creative Commons Attribution 2.5 Australia licence. To view a copy of this licence, visit <http://creativecommons.org/licenses/by/2.5/au>. To attribute this work, cite Population and Dwelling Profile, Cook Shire Council, Office of Economic and Statistical Research, Queensland Treasury and Trade.

This profile is based on information available to the Office of Economic and Statistical Research at the time of preparation. It does not necessarily reflect the opinions or views of Queensland Treasury and Trade or the Queensland Government. Any statement, opinion or advice expressed or implied in this report is made in good faith but on the basis that the State of Queensland, and its agents and employees are not liable for any damage or loss whatsoever which may occur in relation to its use by the client or any third party.