

# Population and Dwelling Profile

## Charters Towers Regional Council

Updated April 2012

### Estimated resident population

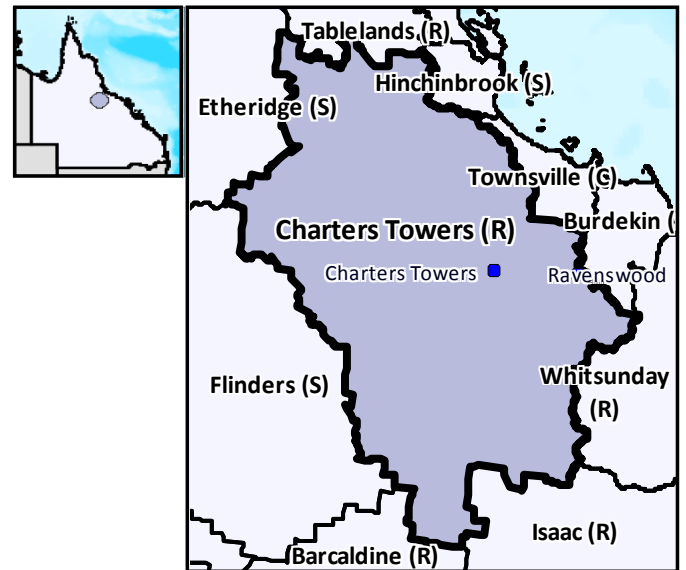
The preliminary estimated resident population of Charters Towers Regional Council at 30 June 2011 was 12,978 persons, an increase of 165 persons or 1.3 per cent over the year. This compares with an increase of 117 persons or 0.9 per cent in the year to June 2010 (Table 1 and Figure 1).

### Components of population change

In the year to June 2009, natural increase (births minus deaths) accounted for an increase of 85 persons while assumed net migration resulted in a gain of 63 persons (Table 1 and Figure 2).

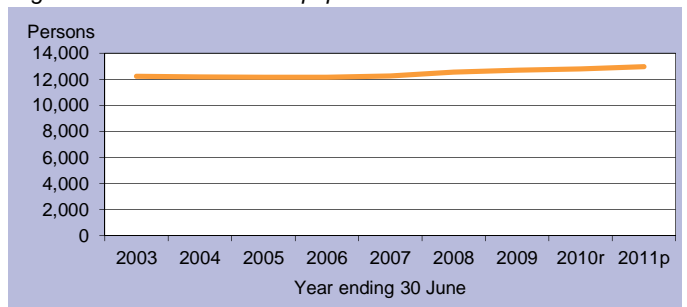
### Population projections

Projections released in 2011 indicate that by 2016 the expected population of Charters Towers Regional Council will be between 13,404 and 13,992 persons (Table 2 and Figure 3). By 2031 this is expected to change to between 14,100 and 16,408 persons (low and high series).



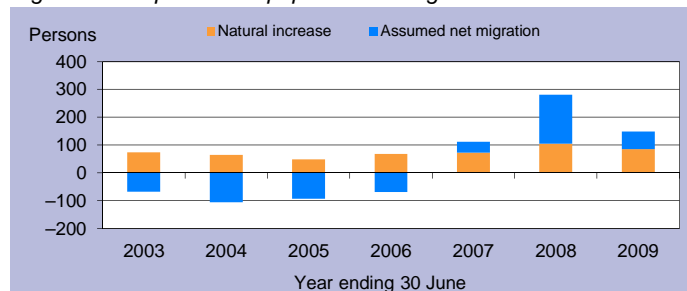
C = City S = Shire R = Regional Council T = Town

Figure 1: Estimated resident population



p = preliminary r = revised

Figure 2: Components of population change



p = preliminary r = revised

Figure 3: Population projections

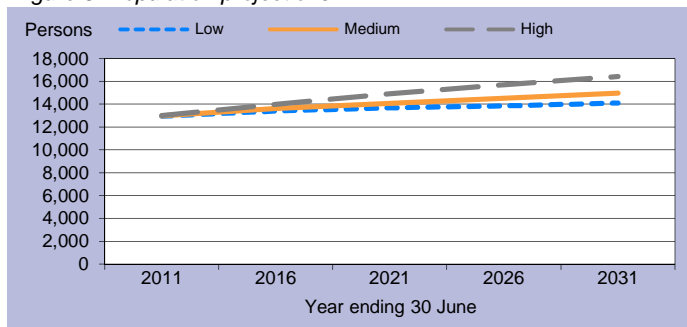


Table 1: Estimated resident population and components of change

Population trends		Annual population change				
As at 30 Jun	Est. resident population	Year to 30 Jun	Natural increase	Assumed net migration	Annual change	
					Total	Per cent
2003	12,242	2,003	74	-68	6	0.0
2004	12,201	2004	65	-106	-41	-0.3
2005	12,156	2005	48	-93	-45	-0.4
2006	12,155	2006	68	-69	-1	-0.0
2007	12,267	2007	72	40	112	0.9
2008	12,548	2008	105	176	281	2.3
2009	12,696	2009	85	63	148	1.2
2010r	12,813	2010r	n.y.a.	n.y.a.	117	0.9
2011p	12,978	2011p	n.y.a.	n.y.a.	165	1.3

p = preliminary r = revised n.y.a. = not available

Table 2: Population projections

	Projected population			Average annual change (medium series)	
	Low series	Medium series	High series	Number	Per cent
2011	12,956	12,979	13,006	165	1.3
2016	13,404	13,627	13,992	130	1.0
2021	13,670	14,063	14,900	87	0.6
2026	13,855	14,521	15,684	92	0.6
2031	14,100	14,963	16,408	88	0.6

Table 3: Population by age group, Charters Towers (R)

	Age group					Median age
	0-14	15-24	25-44	45-64	65+	
2006	2,883	1,613	3,063	2,987	1,609	36.0
	23.7%	13.3%	25.2%	24.6%	13.2%	
2031*	2,837	1,872	2,839	3,303	4,117	44.5
	19.0%	12.5%	19.0%	22.1%	27.5%	

\* Medium series

### Age structure

The median age of Charters Towers Regional Council's population is projected to increase by 8.5 years from a median age of 36.0 years in 2006 to a median age of 44.5 years in 2031 (Table 3 and Figure 4). The median age of Queensland in 2031 is projected to be 40.2 years, under the medium series (Table 4).

### Dwelling approvals

There were 35 new dwelling approvals in Charters Towers Regional Council over the year ending December 2011, a decrease of 30.0 per cent from the previous year (50) (Table 5). Separate houses made up 88.6 per cent of all new dwelling approvals over the year ending December 2011 (Figure 5).

Table 5: New dwelling approvals\*

Year ending	New dwelling approvals		
	Houses	Other	Total
December			
2005	27	8	35
2006	36	2	38
2007	41	0	41
2008	48	0	48
2009	40	4	44
2010	37	13	50
2011	31	4	35
Mar qtr 2011	6	0	6
Jun qtr 2011	11	0	11
Sep qtr 2011	4	4	8
Dec qtr 2011	10	0	10

\* Excludes alterations/additions

Figure 5: Dwelling approvals

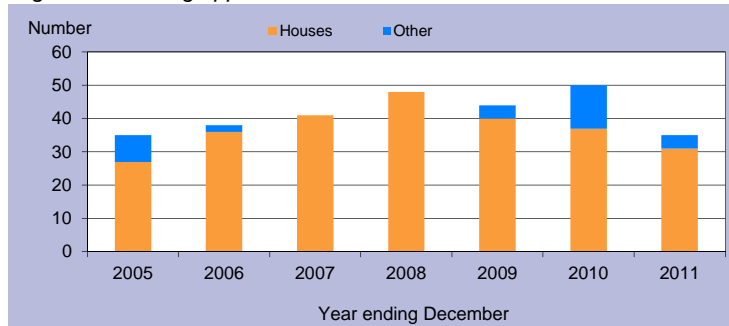
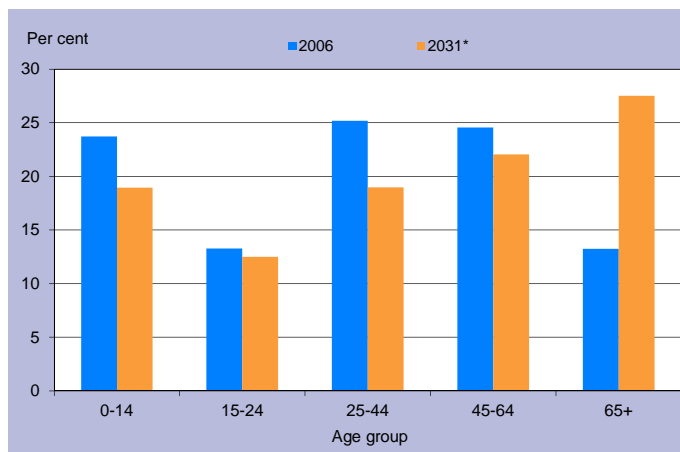


Table 4: Population by age group, Queensland

	Age group					Median age
	0-14	15-24	25-44	45-64	65+	
2006	834,682	578,600	1,169,244	1,013,986	494,396	36.1
	20.4%	14.1%	28.6%	24.8%	12.1%	
2031*	1,205,836	814,688	1,703,235	1,578,741	1,290,350	40.2
	18.3%	12.4%	25.8%	23.9%	19.6%	

\* Medium series

Figure 4: Age distribution, Charters Towers (R), 2006 and 2031\*



\* Medium series

### Household size

In 2006, the average household size for all occupied private dwellings in Charters Towers Regional Council was 2.5 persons. This compares with an average household size of 2.6 for all of Queensland in the same year (Table 6).

Table 6: Average household size by dwelling type

Dwelling type	Average household size			
	Charters Towers (R)			Qld
	1996	2001	2006	2006
Separate house	2.8	2.7	2.6	2.8
Semi-detached, flats, etc	1.8	1.7	2.0	1.8
Other dwellings inc caravans	1.7	1.9	1.9	1.8
All occupied private dwellings	3.0	2.6	2.5	2.6

Sources for the Population and Dwelling Profile:

ABS cat nos 3201.3, 3218.0, 3235.3, 8731.0 (preliminary as at December 2011); ABS unpublished births and deaths data, Census of Population and Housing, 1996, 2001 and 2006; Queensland Government Population Projections, 2011.

You are free to copy, communicate and adapt the work, as long as you attribute the authors. This document is licensed under a Creative Commons Attribution 2.5 Australia licence. To view a copy of this licence, visit <http://creativecommons.org/licenses/by/2.5/au>. To attribute this work, cite Population and Dwelling Profile, Charters Towers Regional Council, Office of Economic and Statistical Research, Queensland Treasury and Trade.

This profile is based on information available to the Office of Economic and Statistical Research at the time of preparation. It does not necessarily reflect the opinions or views of Queensland Treasury and Trade or the Queensland Government. Any statement, opinion or advice expressed or implied in this report is made in good faith but on the basis that the State of Queensland, and its agents and employees are not liable for any damage or loss whatsoever which may occur in relation to its use by the client or any third party.