

# Population and Dwelling Profile

## Central Highlands Regional Council

Updated April 2012

### Estimated resident population

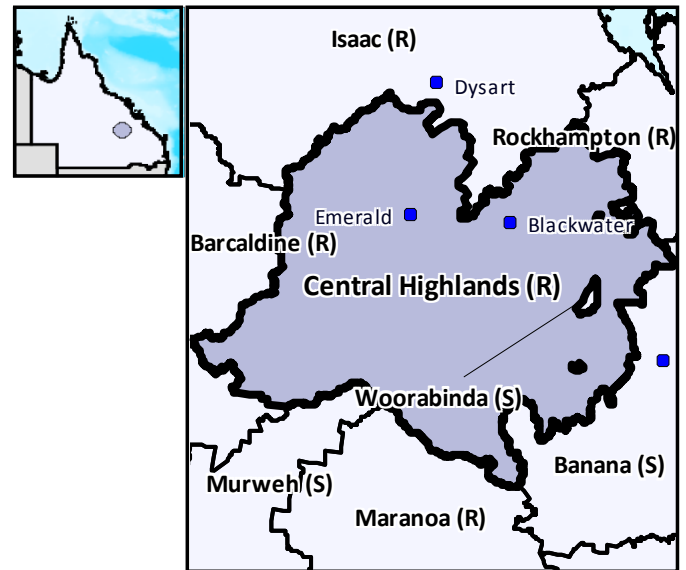
The preliminary estimated resident population of Central Highlands Regional Council at 30 June 2011 was 31,784 persons, an increase of 764 persons or 2.5 per cent over the year. This compares with an increase of 618 persons or 2.0 per cent in the year to June 2010 (Table 1 and Figure 1).

### Components of population change

In the year to June 2009, natural increase (births minus deaths) accounted for an increase of 501 persons while assumed net migration resulted in a gain of 558 persons (Table 1 and Figure 2).

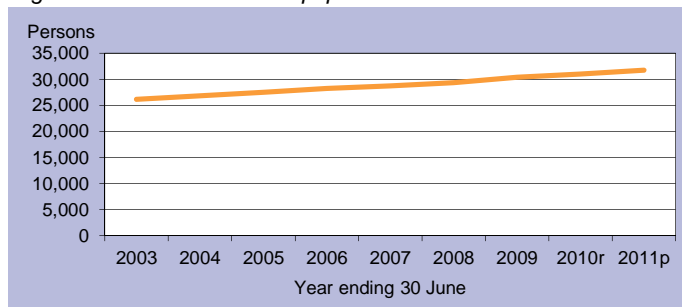
### Population projections

Projections released in 2011 indicate that by 2016 the expected population of Central Highlands Regional Council will be between 35,398 and 37,208 persons (Table 2 and Figure 3). By 2031 this is expected to change to between 45,751 and 54,981 persons (low and high series).



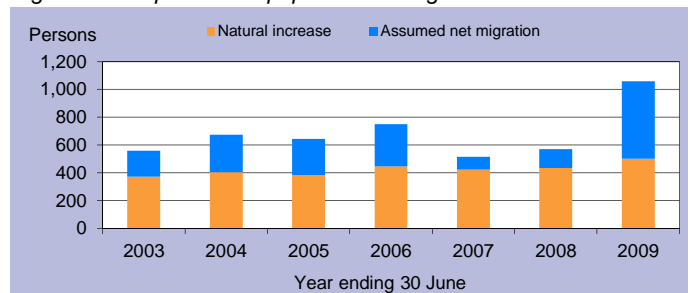
C = City S = Shire R = Regional Council T = Town

Figure 1: Estimated resident population



p = preliminary r = revised

Figure 2: Components of population change



p = preliminary r = revised

Figure 3: Population projections

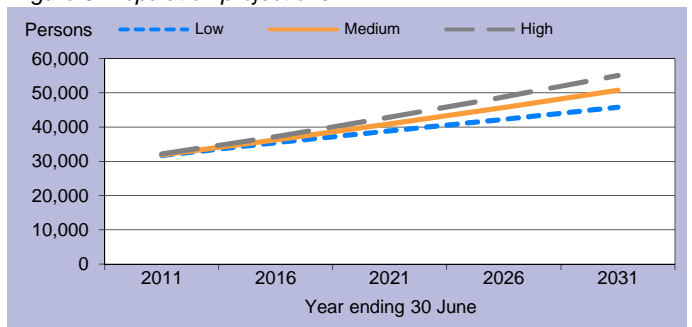


Table 1: Estimated resident population and components of change

Population trends		Annual population change				
As at 30 Jun	Est. resident population	Year to 30 Jun	Natural increase	Assumed net migration	Annual change Total	Per cent
2003	26,187	2,003	372	188	560	2.2
2004	26,861	2004	405	269	674	2.6
2005	27,505	2005	384	260	644	2.4
2006	28,256	2006	447	304	751	2.7
2007	28,772	2007	423	93	516	1.8
2008	29,343	2008	435	136	571	2.0
2009	30,402	2009	501	558	1,059	3.6
2010r	31,020	2010r	n.y.a.	n.y.a.	618	2.0
2011p	31,784	2011p	n.y.a.	n.y.a.	764	2.5

p = preliminary r = revised n.y.a. = not available

Table 2: Population projections

	Projected population			Average annual change (medium series)	
	Low series	Medium series	High series	Number	Per cent
2011	31,667	31,861	32,118	721	2.4
2016	35,398	36,256	37,208	879	2.6
2021	38,837	40,880	42,850	925	2.4
2026	42,200	45,685	48,758	961	2.2
2031	45,751	50,742	54,981	1,011	2.1

Table 3: Population by age group, Central Highlands (R)

	Age group					Median age
	0-14	15-24	25-44	45-64	65+	
2006	7,047	4,107	9,454	6,133	1,515	31.1
	24.9%	14.5%	33.5%	21.7%	5.4%	
2031*	10,800	6,151	15,817	12,504	5,472	35.6
	21.3%	12.1%	31.2%	24.6%	10.8%	

\* Medium series

### Age structure

The median age of Central Highlands Regional Council's population is projected to increase by 4.5 years from a median age of 31.1 years in 2006 to a median age of 35.6 years in 2031 (Table 3 and Figure 4). The median age of Queensland in 2031 is projected to be 40.2 years, under the medium series (Table 4).

### Dwelling approvals

There were 235 new dwelling approvals in Central Highlands Regional Council over the year ending December 2011, a decrease of 33.8 per cent from the previous year (355) (Table 5). Separate houses made up 58.3 per cent of all new dwelling approvals over the year ending December 2011 (Figure 5).

Table 5: New dwelling approvals\*

Year ending	New dwelling approvals		
	Houses	Other	Total
December			
2005	174	13	187
2006	249	72	321
2007	208	128	336
2008	100	41	141
2009	229	40	269
2010	278	77	355
2011	137	98	235
Mar qtr 2011	45	13	58
Jun qtr 2011	24	27	51
Sep qtr 2011	27	11	38
Dec qtr 2011	41	47	88

\* Excludes alterations/additions

Figure 5: Dwelling approvals

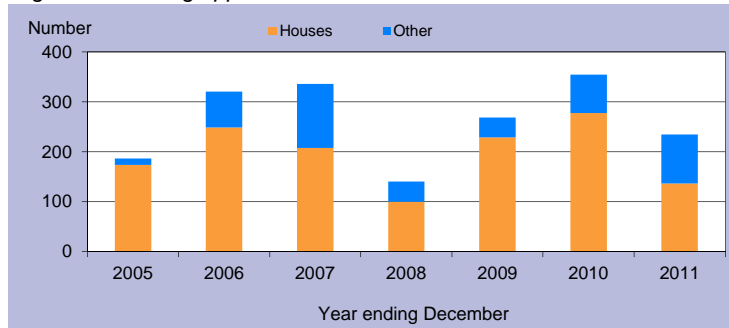
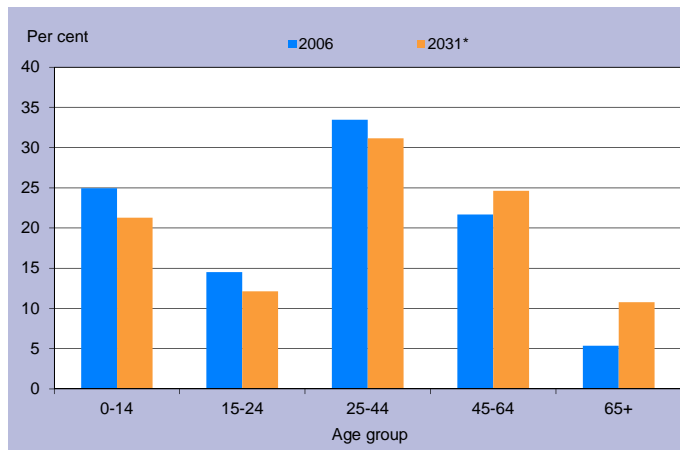


Table 4: Population by age group, Queensland

	Age group					Median age
	0-14	15-24	25-44	45-64	65+	
2006	834,682	578,600	1,169,244	1,013,986	494,396	36.1
	20.4%	14.1%	28.6%	24.8%	12.1%	
2031*	1,205,836	814,688	1,703,235	1,578,741	1,290,350	40.2
	18.3%	12.4%	25.8%	23.9%	19.6%	

\* Medium series

Figure 4: Age distribution, Central Highlands (R), 2006 and 2031\*



\* Medium series

### Household size

In 2006, the average household size for all occupied private dwellings in Central Highlands Regional Council was 2.7 persons. This compares with an average household size of 2.6 for all of Queensland in the same year (Table 6).

Table 6: Average household size by dwelling type

Dwelling type	Average household size			
	Central Highlands (R)			Qld
	1996	2001	2006	2006
Separate house	3.1	3.0	2.9	2.8
Semi-detached, flats, etc	1.9	1.7	1.7	1.8
Other dwellings inc caravans	1.9	1.9	1.9	1.8
All occupied private dwellings	2.7	2.7	2.7	2.6

Sources for the Population and Dwelling Profile:

ABS cat nos 3201.3, 3218.0, 3235.3, 8731.0 (preliminary as at December 2011); ABS unpublished births and deaths data, Census of Population and Housing, 1996, 2001 and 2006; Queensland Government Population Projections, 2011.

You are free to copy, communicate and adapt the work, as long as you attribute the authors. This document is licensed under a Creative Commons Attribution 2.5 Australia licence. To view a copy of this licence, visit <http://creativecommons.org/licenses/by/2.5/au>. To attribute this work, cite Population and Dwelling Profile, Central Highlands Regional Council, Office of Economic and Statistical Research, Queensland Treasury and Trade.

This profile is based on information available to the Office of Economic and Statistical Research at the time of preparation. It does not necessarily reflect the opinions or views of Queensland Treasury and Trade or the Queensland Government. Any statement, opinion or advice expressed or implied in this report is made in good faith but on the basis that the State of Queensland, and its agents and employees are not liable for any damage or loss whatsoever which may occur in relation to its use by the client or any third party.