

# Population and Dwelling Profile

## Cassowary Coast Regional Council

Updated April 2012

### Estimated resident population

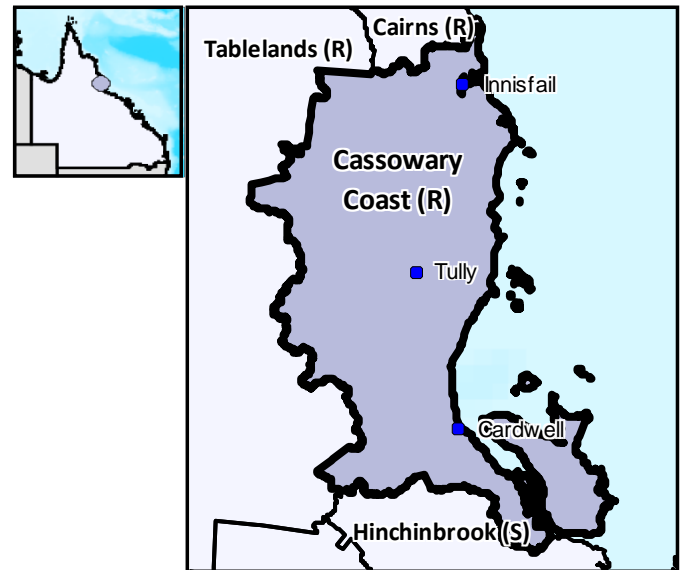
The preliminary estimated resident population of Cassowary Coast Regional Council at 30 June 2011 was 31,263 persons, an increase of 30 persons or 0.1 per cent over the year. This compares with an increase of 242 persons or 0.8 per cent in the year to June 2010 (Table 1 and Figure 1).

### Components of population change

In the year to June 2009, natural increase (births minus deaths) accounted for an increase of 202 persons while assumed net migration resulted in a gain of 331 persons (Table 1 and Figure 2).

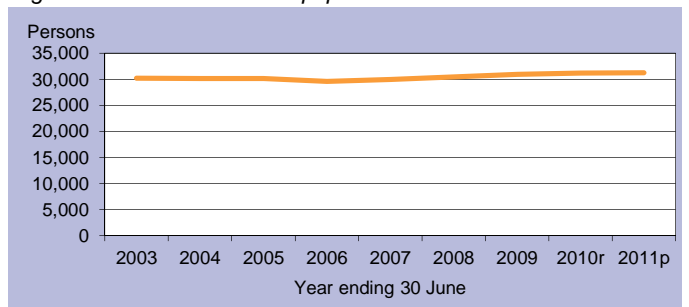
### Population projections

Projections released in 2011 indicate that by 2016 the expected population of Cassowary Coast Regional Council will be between 31,432 and 33,556 persons (Table 2 and Figure 3). By 2031 this is expected to change to between 32,695 and 38,154 persons (low and high series).



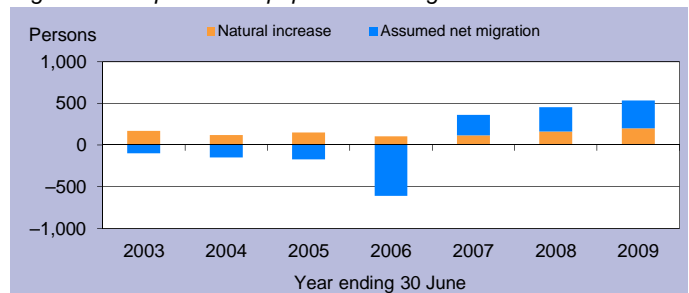
C = City S = Shire R = Regional Council T = Town

Figure 1: Estimated resident population



p = preliminary r = revised

Figure 2: Components of population change



p = preliminary r = revised

Figure 3: Population projections

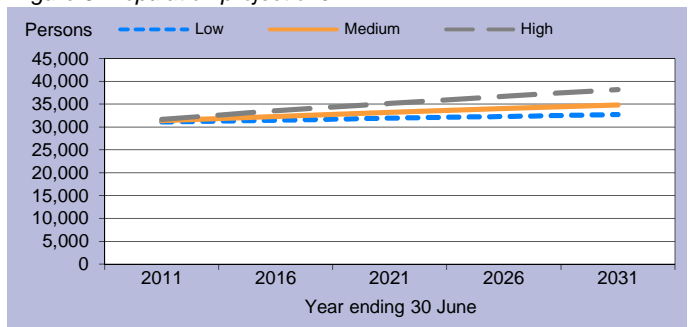


Table 1: Estimated resident population and components of change

Population trends		Annual population change				
As at 30 Jun	Est. resident population	Year to 30 Jun	Natural increase	Assumed net migration	Annual change Total	Per cent
2003	30,198	2,003	168	-101	67	0.2
2004	30,166	2004	119	-151	-32	-0.1
2005	30,145	2005	152	-173	-21	-0.1
2006	29,642	2006	105	-608	-503	-1.7
2007	30,005	2007	116	247	363	1.2
2008	30,458	2008	160	293	453	1.5
2009	30,991	2009	202	331	533	1.7
2010r	31,233	2010r	n.y.a.	n.y.a.	242	0.8
2011p	31,263	2011p	n.y.a.	n.y.a.	30	0.1

p = preliminary r = revised n.y.a. = not available

Table 2: Population projections

	Projected population			Average annual change (medium series)	
	Low series	Medium series	High series	Number	Per cent
2011	31,076	31,371	31,678	346	1.1
2016	31,432	32,307	33,556	187	0.6
2021	31,914	33,198	35,148	178	0.5
2026	32,328	34,046	36,693	170	0.5
2031	32,695	34,841	38,154	159	0.5

Table 3: Population by age group, Cassowary Coast (R)

	Age group					Median age
	0-14	15-24	25-44	45-64	65+	
2006	6,280	3,375	7,484	8,289	4,214	40.0
	21.2%	11.4%	25.2%	28.0%	14.2%	
2031*	5,519	3,235	6,912	8,639	10,538	49.8
	15.8%	9.3%	19.8%	24.8%	30.2%	

\* Medium series

### Age structure

The median age of Cassowary Coast Regional Council's population is projected to increase by 9.8 years from a median age of 40.0 years in 2006 to a median age of 49.8 years in 2031 (Table 3 and Figure 4). The median age of Queensland in 2031 is projected to be 40.2 years, under the medium series (Table 4).

### Dwelling approvals

There were 97 new dwelling approvals in Cassowary Coast Regional Council over the year ending December 2011, a decrease of 22.4 per cent from the previous year (125) (Table 5). Separate houses made up 89.7 per cent of all new dwelling approvals over the year ending December 2011 (Figure 5).

Table 5: New dwelling approvals\*

Year ending	New dwelling approvals		
	Houses	Other	Total
December			
2005	155	53	208
2006	178	21	199
2007	174	14	188
2008	157	17	174
2009	132	10	142
2010	95	30	125
2011	87	10	97
Mar qtr 2011	5	2	7
Jun qtr 2011	10	0	10
Sep qtr 2011	28	4	32
Dec qtr 2011	44	4	48

\* Excludes alterations/additions

Figure 5: Dwelling approvals

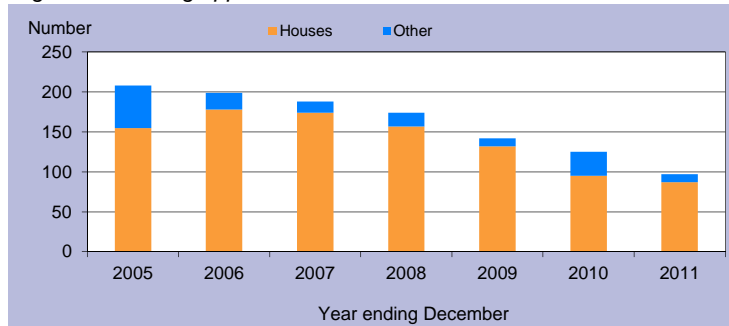
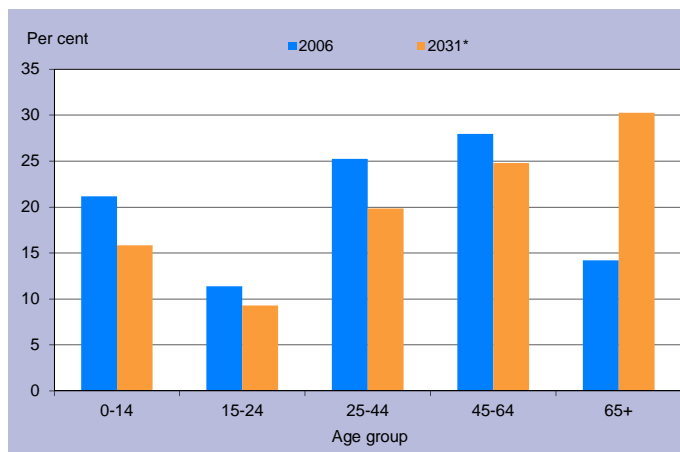


Table 4: Population by age group, Queensland

	Age group					Median age
	0-14	15-24	25-44	45-64	65+	
2006	834,682	578,600	1,169,244	1,013,986	494,396	36.1
	20.4%	14.1%	28.6%	24.8%	12.1%	
2031*	1,205,836	814,688	1,703,235	1,578,741	1,290,350	40.2
	18.3%	12.4%	25.8%	23.9%	19.6%	

\* Medium series

Figure 4: Age distribution, Cassowary Coast (R), 2006 and 2031\*



\* Medium series

### Household size

In 2006, the average household size for all occupied private dwellings in Cassowary Coast Regional Council was 2.6 persons. This compares with an average household size of 2.6 for all of Queensland in the same year (Table 6).

Table 6: Average household size by dwelling type

Dwelling type	Average household size			
	Cassowary Coast (R)			Qld
	1996	2001	2006	2006
Separate house	2.9	2.7	2.7	2.8
Semi-detached, flats, etc	2.0	1.8	2.1	1.8
Other dwellings inc caravans	1.9	1.8	2.0	1.8
All occupied private dwellings	2.6	2.5	2.6	2.6

Sources for the Population and Dwelling Profile:

ABS cat nos 3201.3, 3218.0, 3235.3, 8731.0 (preliminary as at December 2011); ABS unpublished births and deaths data, Census of Population and Housing, 1996, 2001 and 2006; Queensland Government Population Projections, 2011.

You are free to copy, communicate and adapt the work, as long as you attribute the authors. This document is licensed under a Creative Commons Attribution 2.5 Australia licence. To view a copy of this licence, visit <http://creativecommons.org/licenses/by/2.5/au>. To attribute this work, cite Population and Dwelling Profile, Cassowary Coast Regional Council, Office of Economic and Statistical Research, Queensland Treasury and Trade.

This profile is based on information available to the Office of Economic and Statistical Research at the time of preparation. It does not necessarily reflect the opinions or views of Queensland Treasury and Trade or the Queensland Government. Any statement, opinion or advice expressed or implied in this report is made in good faith but on the basis that the State of Queensland, and its agents and employees are not liable for any damage or loss whatsoever which may occur in relation to its use by the client or any third party.