

Population and Dwelling Profile

Burke Shire Council

Updated April 2012

Estimated resident population

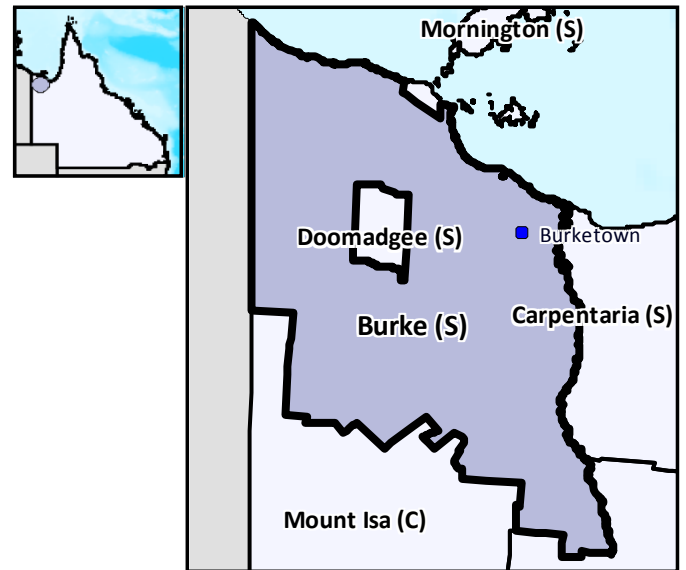
The preliminary estimated resident population of Burke Shire Council at 30 June 2011 was 566 persons, an increase of 13 persons or 2.4 per cent over the year. This compares with a decrease of 2 persons or 0.4 per cent in the year to June 2010 (Table 1 and Figure 1).

Components of population change

In the year to June 2009, natural increase (births minus deaths) accounted for an increase of 4 persons while assumed net migration resulted in a loss of 13 persons (Table 1 and Figure 2).

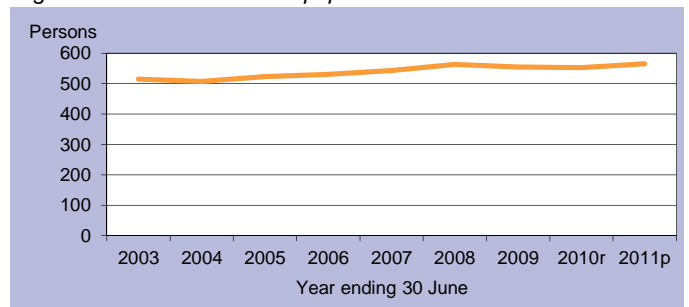
Population projections

Projections released in 2011 indicate that by 2016 the expected population of Burke Shire Council will be between 557 and 647 persons (Table 2 and Figure 3). By 2031 this is expected to change to between 544 and 816 persons (low and high series).



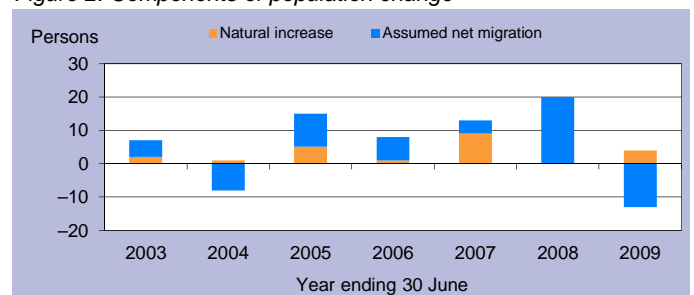
C = City S = Shire R = Regional Council T = Town

Figure 1: Estimated resident population



p = preliminary r = revised

Figure 2: Components of population change



p = preliminary r = revised

Figure 3: Population projections

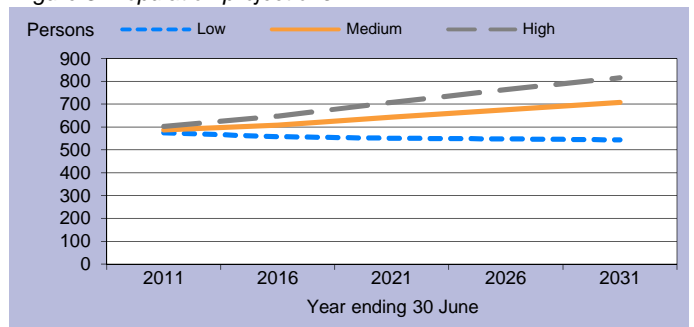


Table 1: Estimated resident population and components of change

Population trends		Annual population change					
As at 30 Jun	Est. resident population	Year to 30 Jun	Natural increase	Assumed net migration	Annual change		
					Total	Per cent	
2003	515	2,003	2	5	7	1.4	
2004	508	2004	1	-8	-7	-1.4	
2005	523	2005	5	10	15	3.0	
2006	531	2006	1	7	8	1.5	
2007	544	2007	9	4	13	2.4	
2008	564	2008	0	20	20	3.7	
2009	555	2009	4	-13	-9	-1.6	
2010r	553	2010r	n.y.a.	n.y.a.	-2	-0.4	
2011p	566	2011p	n.y.a.	n.y.a.	13	2.4	

p = preliminary r = revised n.y.a. = not available

Table 2: Population projections

	Projected population			Average annual change (medium series)	
	Low series	Medium series	High series	Number	Per cent
2011	575	587	602	11	2.0
2016	557	608	647	4	0.7
2021	551	643	707	7	1.1
2026	548	676	763	7	1.0
2031	544	707	816	6	0.9

Table 3: Population by age group, Burke (S)

	Age group					Median age
	0-14	15-24	25-44	45-64	65+	
2006	77	88	205	128	33	35.5
	14.5%	16.6%	38.6%	24.1%	6.2%	
2031*	95	84	160	253	116	46.1
	13.4%	11.9%	22.6%	35.7%	16.4%	

* Medium series

Age structure

The median age of Burke Shire Council's population is projected to increase by 10.6 years from a median age of 35.5 years in 2006 to a median age of 46.1 years in 2031 (Table 3 and Figure 4). The median age of Queensland in 2031 is projected to be 40.2 years, under the medium series (Table 4).

Dwelling approvals

For the year ending December 2011, Burke Shire Council has had no reported new dwelling approvals (Table 5 and Figure 5).

Table 5: New dwelling approvals*

Year ending	New dwelling approvals		
	Houses	Other	Total
December			
2005	0	0	0
2006	0	0	0
2007	0	0	0
2008	0	0	0
2009	0	0	0
2010	0	0	0
2011	0	0	0
Mar qtr 2011	0	0	0
Jun qtr 2011	0	0	0
Sep qtr 2011	0	0	0
Dec qtr 2011	0	0	0

* Excludes alterations/additions

Figure 5: Dwelling approvals

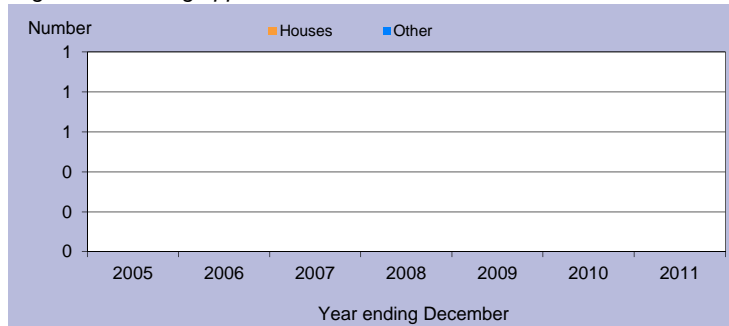
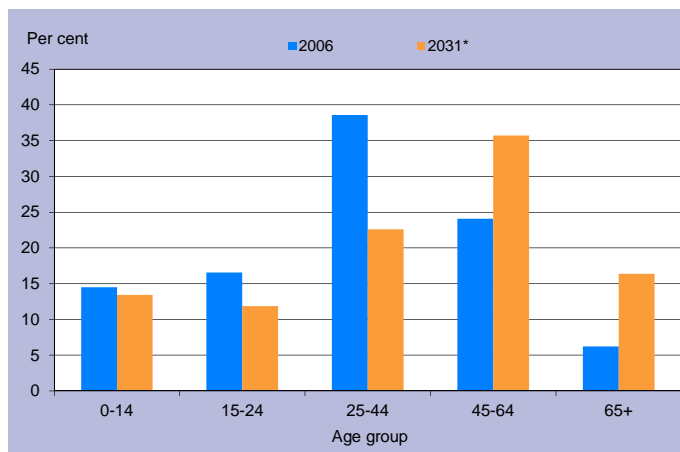


Table 4: Population by age group, Queensland

	Age group					Median age
	0-14	15-24	25-44	45-64	65+	
2006	834,682	578,600	1,169,244	1,013,986	494,396	36.1
	20.4%	14.1%	28.6%	24.8%	12.1%	
2031*	1,205,836	814,688	1,703,235	1,578,741	1,290,350	40.2
	18.3%	12.4%	25.8%	23.9%	19.6%	

* Medium series

Figure 4: Age distribution, Burke (S), 2006 and 2031*



* Medium series

Household size

In 2006, the average household size for all occupied private dwellings in Burke Shire Council was 2.4 persons. This compares with an average household size of 2.6 for all of Queensland in the same year (Table 6).

Table 6: Average household size by dwelling type

Dwelling type	Average household size			
	Burke (S)			Qld
	1996	2001	2006	2006
Separate house	5.6	5.3	2.7	2.8
Semi-detached, flats, etc	1.2	0.0	2.5	1.8
Other dwellings inc caravans	2.1	2.0	2.1	1.8
All occupied private dwellings	3.6	4.0	2.4	2.6

Sources for the Population and Dwelling Profile:

ABS cat nos 3201.3, 3218.0, 3235.3, 8731.0 (preliminary as at December 2011); ABS unpublished births and deaths data, Census of Population and Housing, 1996, 2001 and 2006; Queensland Government Population Projections, 2011.

You are free to copy, communicate and adapt the work, as long as you attribute the authors. This document is licensed under a Creative Commons Attribution 2.5 Australia licence. To view a copy of this licence, visit <http://creativecommons.org/licenses/by/2.5/au>. To attribute this work, cite Population and Dwelling Profile, Burke Shire Council, Office of Economic and Statistical Research, Queensland Treasury and Trade.

This profile is based on information available to the Office of Economic and Statistical Research at the time of preparation. It does not necessarily reflect the opinions or views of Queensland Treasury and Trade or the Queensland Government. Any statement, opinion or advice expressed or implied in this report is made in good faith but on the basis that the State of Queensland, and its agents and employees are not liable for any damage or loss whatsoever which may occur in relation to its use by the client or any third party.