

Population and Dwelling Profile

Bundaberg Regional Council

Updated April 2012

Estimated resident population

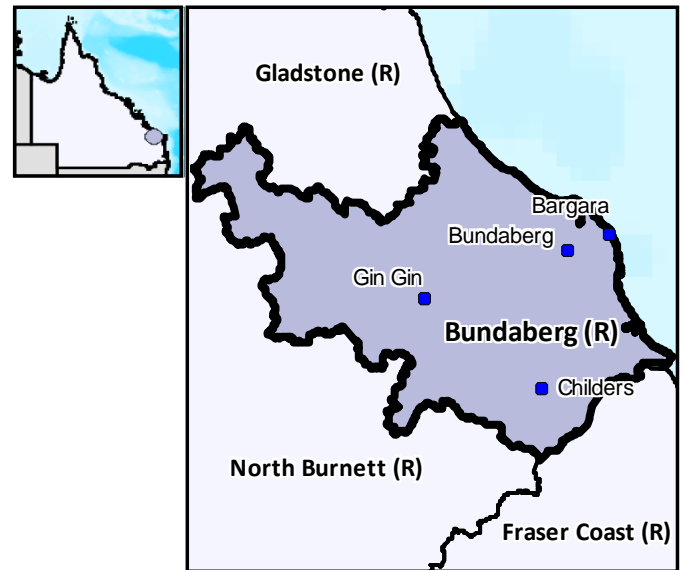
The preliminary estimated resident population of Bundaberg Regional Council at 30 June 2011 was 97,762 persons, an increase of 1,007 persons or 1.0 per cent over the year. This compares with an increase of 1,624 persons or 1.7 per cent in the year to June 2010 (Table 1 and Figure 1).

Components of population change

In the year to June 2009, natural increase (births minus deaths) accounted for an increase of 523 persons while assumed net migration resulted in a gain of 1,957 persons (Table 1 and Figure 2).

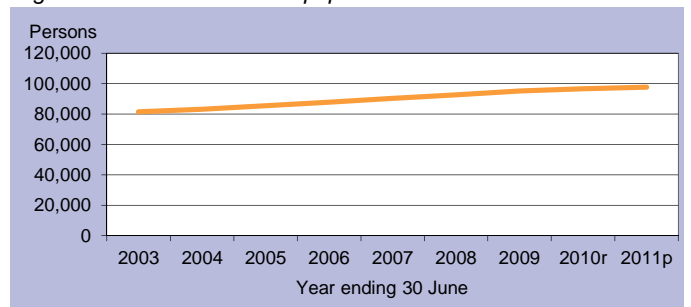
Population projections

Projections released in 2011 indicate that by 2016 the expected population of Bundaberg Regional Council will be between 105,340 and 110,454 persons (Table 2 and Figure 3). By 2031 this is expected to change to between 128,588 and 150,203 persons (low and high series).



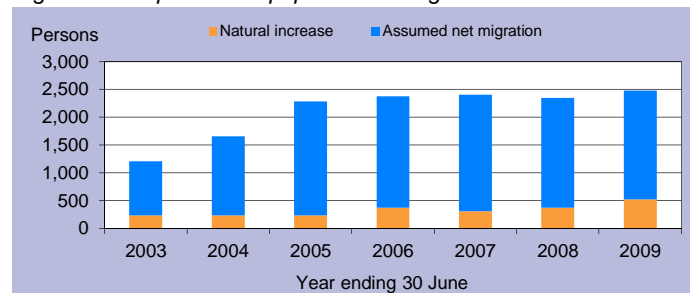
C = City S = Shire R = Regional Council T = Town

Figure 1: Estimated resident population



p = preliminary r = revised

Figure 2: Components of population change



p = preliminary r = revised

Figure 3: Population projections

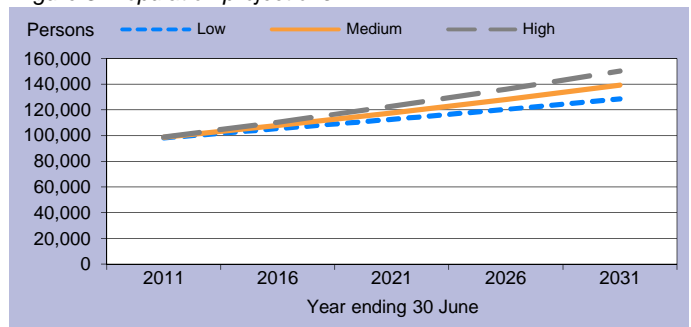


Table 1: Estimated resident population and components of change

Population trends		Annual population change				
As at 30 Jun	Est. resident population	Year to 30 Jun	Natural increase	Assumed net migration	Annual change	
					Total	Per cent
2003	81,579	2,003	237	973	1,210	1.5
2004	83,238	2004	236	1,423	1,659	2.0
2005	85,522	2005	236	2,048	2,284	2.7
2006	87,898	2006	371	2,005	2,376	2.8
2007	90,302	2007	311	2,093	2,404	2.7
2008	92,651	2008	370	1,979	2,349	2.6
2009	95,131	2009	523	1,957	2,480	2.7
2010r	96,755	2010r	n.y.a.	n.y.a.	1,624	1.7
2011p	97,762	2011p	n.y.a.	n.y.a.	1,007	1.0

p = preliminary r = revised n.y.a. = not available

Table 2: Population projections

	Projected population			Average annual change (medium series)	
	Low series	Medium series	High series	Number	Per cent
2011	98,017	98,533	98,961	2,127	2.3
2016	105,340	107,816	110,454	1,857	1.8
2021	112,647	117,585	122,820	1,954	1.7
2026	120,353	128,057	136,043	2,094	1.7
2031	128,588	139,350	150,203	2,259	1.7

Table 3: Population by age group, Bundaberg (R)

	Age group					Median age
	0-14	15-24	25-44	45-64	65+	
2006	18,021	10,274	20,484	24,171	14,948	41.1
	20.5%	11.7%	23.3%	27.5%	17.0%	
2031*	25,716	13,779	30,554	34,916	34,384	44.8
	18.5%	9.9%	21.9%	25.1%	24.7%	

* Medium series

Age structure

The median age of Bundaberg Regional Council's population is projected to increase by 3.7 years from a median age of 41.1 years in 2006 to a median age of 44.8 years in 2031 (Table 3 and Figure 4). The median age of Queensland in 2031 is projected to be 40.2 years, under the medium series (Table 4).

Dwelling approvals

There were 359 new dwelling approvals in Bundaberg Regional Council over the year ending December 2011, a decrease of 36.3 per cent from the previous year (564) (Table 5). Separate houses made up 91.9 per cent of all new dwelling approvals over the year ending December 2011 (Figure 5).

Table 5: New dwelling approvals*

Year ending	New dwelling approvals		
	Houses	Other	Total
December			
2005	685	426	1,111
2006	654	158	812
2007	916	306	1,222
2008	573	168	741
2009	500	90	590
2010	433	131	564
2011	330	29	359
Mar qtr 2011	67	4	71
Jun qtr 2011	80	7	87
Sep qtr 2011	107	8	115
Dec qtr 2011	76	10	86

* Excludes alterations/additions

Figure 5: Dwelling approvals

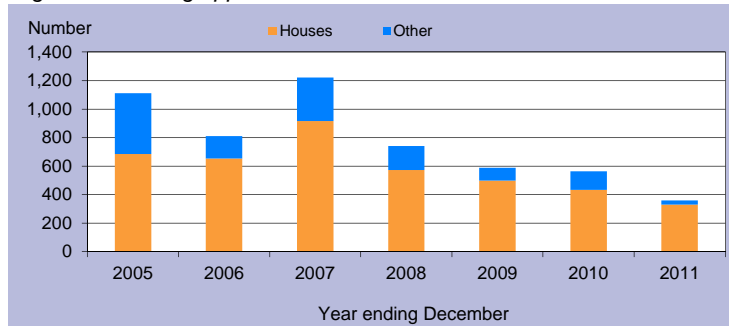
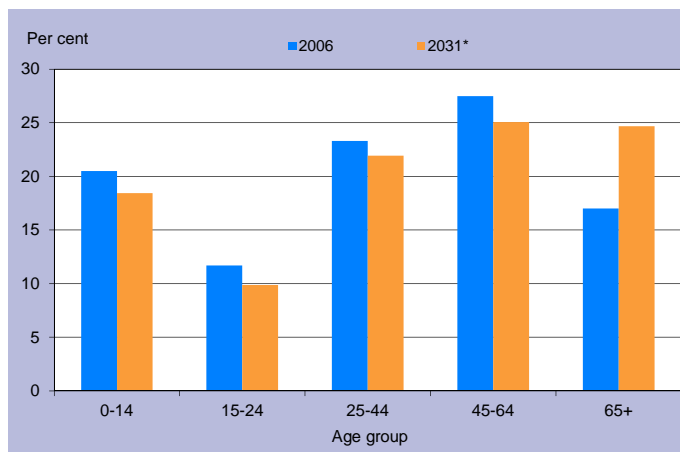


Table 4: Population by age group, Queensland

	Age group					Median age
	0-14	15-24	25-44	45-64	65+	
2006	834,682	578,600	1,169,244	1,013,986	494,396	36.1
	20.4%	14.1%	28.6%	24.8%	12.1%	
2031*	1,205,836	814,688	1,703,235	1,578,741	1,290,350	40.2
	18.3%	12.4%	25.8%	23.9%	19.6%	

* Medium series

Figure 4: Age distribution, Bundaberg (R), 2006 and 2031*



* Medium series

Household size

In 2006, the average household size for all occupied private dwellings in Bundaberg Regional Council was 2.5 persons. This compares with an average household size of 2.6 for all of Queensland in the same year (Table 6).

Table 6: Average household size by dwelling type

Dwelling type	Average household size			
	Bundaberg (R)			Qld
	1996	2001	2006	2006
Separate house	2.8	2.7	2.6	2.8
Semi-detached, flats, etc	1.7	1.6	1.6	1.8
Other dwellings inc caravans	1.9	1.8	1.9	1.8
All occupied private dwellings	2.6	2.5	2.5	2.6

Sources for the Population and Dwelling Profile:

ABS cat nos 3201.3, 3218.0, 3235.3, 8731.0 (preliminary as at December 2011); ABS unpublished births and deaths data, Census of Population and Housing, 1996, 2001 and 2006; Queensland Government Population Projections, 2011.

You are free to copy, communicate and adapt the work, as long as you attribute the authors. This document is licensed under a Creative Commons Attribution 2.5 Australia licence. To view a copy of this licence, visit <http://creativecommons.org/licenses/by/2.5/au>. To attribute this work, cite Population and Dwelling Profile, Bundaberg Regional Council, Office of Economic and Statistical Research, Queensland Treasury and Trade.

This profile is based on information available to the Office of Economic and Statistical Research at the time of preparation. It does not necessarily reflect the opinions or views of Queensland Treasury and Trade or the Queensland Government. Any statement, opinion or advice expressed or implied in this report is made in good faith but on the basis that the State of Queensland, and its agents and employees are not liable for any damage or loss whatsoever which may occur in relation to its use by the client or any third party.