

Population and Dwelling Profile

Banana Shire Council

Updated April 2012

Estimated resident population

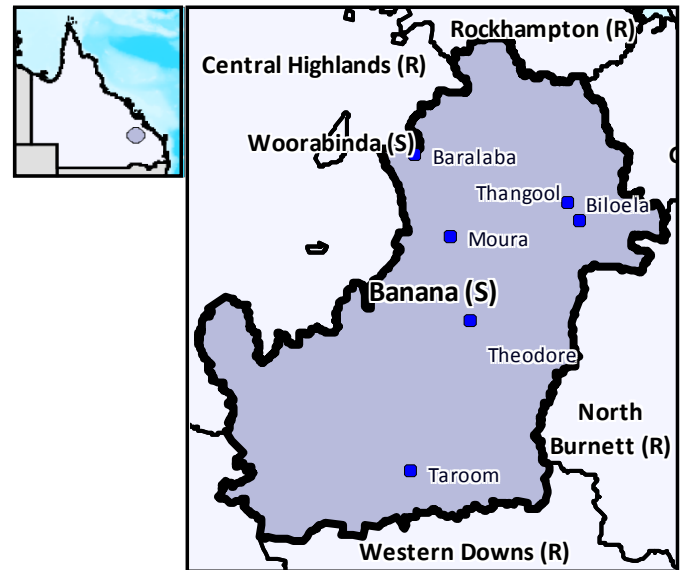
The preliminary estimated resident population of Banana Shire Council at 30 June 2011 was 15,593 persons, an increase of 27 persons or 0.2 per cent over the year. This compares with a decrease of 31 persons or 0.2 per cent in the year to June 2010 (Table 1 and Figure 1).

Components of population change

In the year to June 2009, natural increase (births minus deaths) accounted for an increase of 170 persons while assumed net migration resulted in a loss of 54 persons (Table 1 and Figure 2).

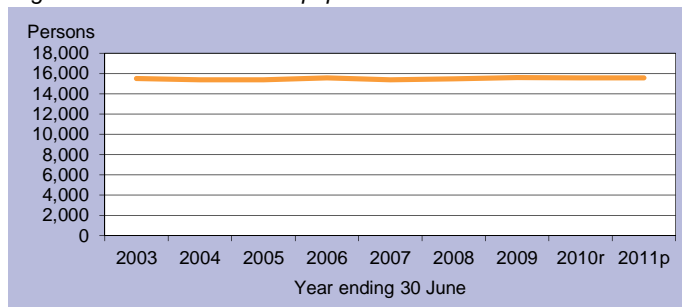
Population projections

Projections released in 2011 indicate that by 2016 the expected population of Banana Shire Council will be between 16,428 and 17,506 persons (Table 2 and Figure 3). By 2031 this is expected to change to between 17,105 and 20,533 persons (low and high series).



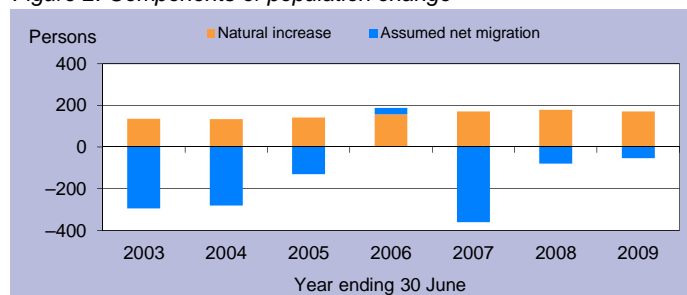
C = City S = Shire R = Regional Council T = Town

Figure 1: Estimated resident population



p = preliminary r = revised

Figure 2: Components of population change



p = preliminary r = revised

Figure 3: Population projections

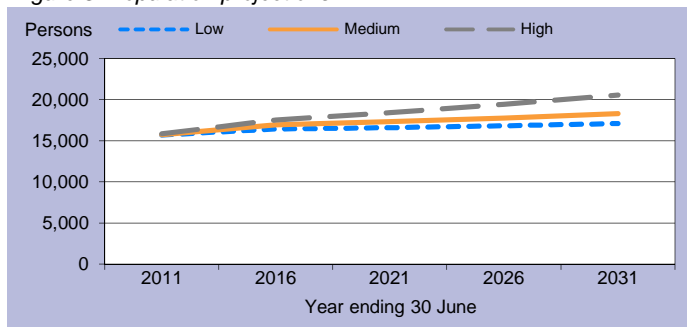


Table 1: Estimated resident population and components of change

Population trends		Annual population change				
As at 30 Jun	Est. resident population	Year to 30 Jun	Natural increase	Assumed net migration	Annual change	
					Total	Per cent
2003	15,520	2,003	136	-295	-159	-1.0
2004	15,374	2004	134	-280	-146	-0.9
2005	15,385	2005	141	-130	11	0.1
2006	15,572	2006	156	31	187	1.2
2007	15,382	2007	170	-360	-190	-1.2
2008	15,481	2008	178	-79	99	0.6
2009	15,597	2009	170	-54	116	0.7
2010r	15,566	2010r	n.y.a.	n.y.a.	-31	-0.2
2011p	15,593	2011p	n.y.a.	n.y.a.	27	0.2

p = preliminary r = revised n.y.a. = not available

Table 2: Population projections

	Projected population			Average annual change (medium series)	
	Low series	Medium series	High series	Number	Per cent
2011	15,698	15,742	15,828	34	0.2
2016	16,428	16,948	17,506	241	1.5
2021	16,594	17,310	18,411	72	0.4
2026	16,822	17,759	19,427	90	0.5
2031	17,105	18,277	20,533	104	0.6

Table 3: Population by age group, Banana (S)

	Age group					Median age
	0-14	15-24	25-44	45-64	65+	
2006	3,678	1,962	4,607	3,663	1,655	34.5
	23.6%	12.6%	29.6%	23.5%	10.6%	
2031*	4,100	2,108	5,228	4,219	2,622	36.1
	22.4%	11.5%	28.6%	23.1%	14.3%	

* Medium series

Age structure

The median age of Banana Shire Council's population is projected to increase by 1.6 years from a median age of 34.5 years in 2006 to a median age of 36.1 years in 2031 (Table 3 and Figure 4). The median age of Queensland in 2031 is projected to be 40.2 years, under the medium series (Table 4).

Dwelling approvals

There were 40 new dwelling approvals in Banana Shire Council over the year ending December 2011, a decrease of 9.1 per cent from the previous year (44) (Table 5). Separate houses made up 100.0 per cent of all new dwelling approvals over the year ending December 2011 (Figure 5).

Table 5: New dwelling approvals*

Year ending	New dwelling approvals		
	Houses	Other	Total
December			
2005	48	0	48
2006	48	16	64
2007	59	4	63
2008	25	3	28
2009	13	0	13
2010	44	0	44
2011	40	0	40
Mar qtr 2011	9	0	9
Jun qtr 2011	6	0	6
Sep qtr 2011	18	0	18
Dec qtr 2011	7	0	7

* Excludes alterations/additions

Figure 5: Dwelling approvals

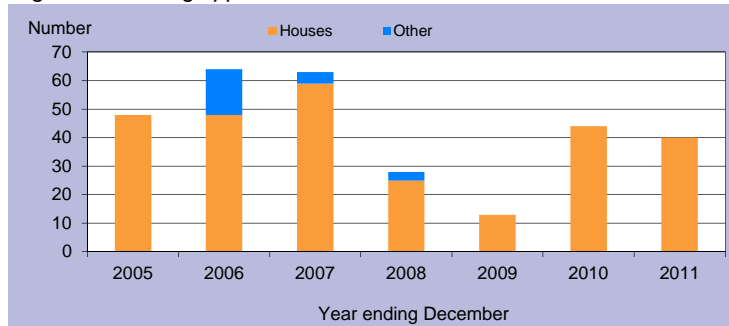
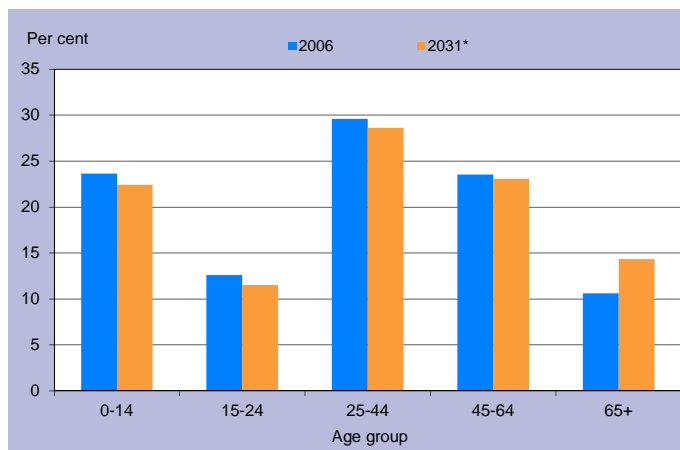


Table 4: Population by age group, Queensland

	Age group					Median age
	0-14	15-24	25-44	45-64	65+	
2006	834,682	578,600	1,169,244	1,013,986	494,396	36.1
	20.4%	14.1%	28.6%	24.8%	12.1%	
2031*	1,205,836	814,688	1,703,235	1,578,741	1,290,350	40.2
	18.3%	12.4%	25.8%	23.9%	19.6%	

* Medium series

Figure 4: Age distribution, Banana (S), 2006 and 2031*



* Medium series

Household size

In 2006, the average household size for all occupied private dwellings in Banana Shire Council was 2.5 persons. This compares with an average household size of 2.6 for all of Queensland in the same year (Table 6).

Table 6: Average household size by dwelling type

Dwelling type	Average household size			
	Banana (S)			Qld
	1996	2001	2006	2006
Separate house	2.8	2.7	2.7	2.8
Semi-detached, flats, etc	1.6	1.6	1.6	1.8
Other dwellings inc caravans	1.8	1.7	1.7	1.8
All occupied private dwellings	2.7	2.6	2.5	2.6

Sources for the Population and Dwelling Profile:

ABS cat nos 3201.3, 3218.0, 3235.3, 8731.0 (preliminary as at December 2011); ABS unpublished births and deaths data, Census of Population and Housing, 1996, 2001 and 2006; Queensland Government Population Projections, 2011.

You are free to copy, communicate and adapt the work, as long as you attribute the authors. This document is licensed under a Creative Commons Attribution 2.5 Australia licence. To view a copy of this licence, visit <http://creativecommons.org/licenses/by/2.5/au>. To attribute this work, cite Population and Dwelling Profile, Banana Shire Council, Office of Economic and Statistical Research, Queensland Treasury and Trade.

This profile is based on information available to the Office of Economic and Statistical Research at the time of preparation. It does not necessarily reflect the opinions or views of Queensland Treasury and Trade or the Queensland Government. Any statement, opinion or advice expressed or implied in this report is made in good faith but on the basis that the State of Queensland, and its agents and employees are not liable for any damage or loss whatsoever which may occur in relation to its use by the client or any third party.