

Population and Dwelling Profile

Balonne Shire Council

Updated April 2012

Estimated resident population

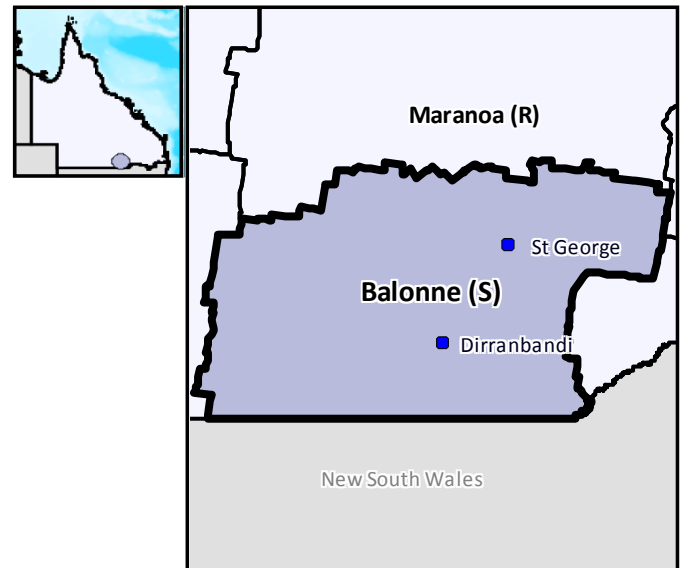
The preliminary estimated resident population of Balonne Shire Council at 30 June 2011 was 4,847 persons, an increase of 9 persons or 0.2 per cent over the year. This compares with a decrease of 9 persons or 0.2 per cent in the year to June 2010 (Table 1 and Figure 1).

Components of population change

In the year to June 2009, natural increase (births minus deaths) accounted for an increase of 82 persons while assumed net migration resulted in a loss of 87 persons (Table 1 and Figure 2).

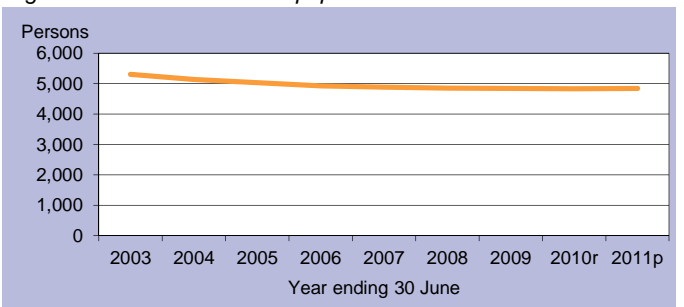
Population projections

Projections released in 2011 indicate that by 2016 the expected population of Balonne Shire Council will be between 4,791 and 5,060 persons (Table 2 and Figure 3). By 2031 this is expected to change to between 5,123 and 6,090 persons (low and high series).



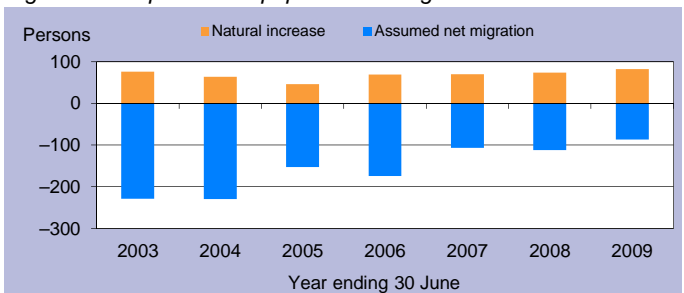
C = City S = Shire R = Regional Council T = Town

Figure 1: Estimated resident population



p = preliminary r = revised

Figure 2: Components of population change



p = preliminary r = revised

Figure 3: Population projections

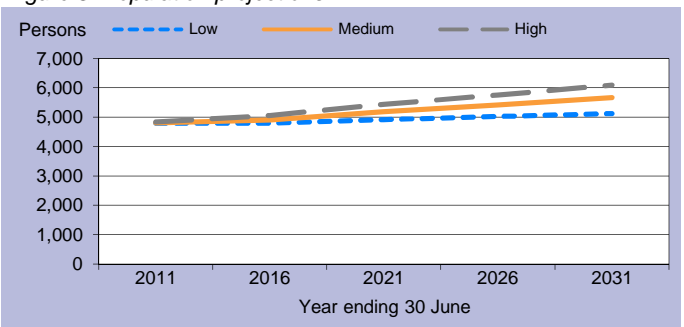


Table 1: Estimated resident population and components of change

Population trends		Annual population change				
As at 30 Jun	Est. resident population	Year to 30 Jun	Natural increase	Assumed net migration	Annual change	
					Total	Per cent
2003	5,305	2,003	76	-229	-153	-2.8
2004	5,139	2004	64	-230	-166	-3.1
2005	5,032	2005	46	-153	-107	-2.1
2006	4,927	2006	69	-174	-105	-2.1
2007	4,890	2007	70	-107	-37	-0.8
2008	4,852	2008	74	-112	-38	-0.8
2009	4,847	2009	82	-87	-5	-0.1
2010r	4,838	2010r	n.y.a.	n.y.a.	-9	-0.2
2011p	4,847	2011p	n.y.a.	n.y.a.	9	0.2

p = preliminary r = revised n.y.a. = not available

Table 2: Population projections

	Projected population			Average annual change (medium series)	
	Low series	Medium series	High series	Number	Per cent
2011	4,798	4,805	4,843	-24	-0.5
2016	4,791	4,906	5,060	20	0.4
2021	4,910	5,183	5,435	55	1.1
2026	5,019	5,418	5,759	47	0.9
2031	5,123	5,663	6,090	49	0.9

Table 3: Population by age group, Balonne (S)

	Age group					Median age
	0-14	15-24	25-44	45-64	65+	
2006	1,247	574	1,527	1,092	487	33.9
	25.3%	11.7%	31.0%	22.2%	9.9%	
2031*	1,288	720	1,493	1,254	906	35.0
	22.8%	12.7%	26.4%	22.2%	16.0%	

* Medium series

Age structure

The median age of Balonne Shire Council's population is projected to increase by 1.1 years from a median age of 33.9 years in 2006 to a median age of 35.0 years in 2031 (Table 3 and Figure 4). The median age of Queensland in 2031 is projected to be 40.2 years, under the medium series (Table 4).

Dwelling approvals

There were 4 new dwelling approvals in Balonne Shire Council over the year ending December 2011, a decrease of 50.0 per cent from the previous year (8) (Table 5). Separate houses made up 100.0 per cent of all new dwelling approvals over the year ending December 2011 (Figure 5).

Table 5: New dwelling approvals*

Year ending	New dwelling approvals		
	Houses	Other	Total
December			
2005	13	0	13
2006	10	0	10
2007	18	0	18
2008	1	0	1
2009	11	0	11
2010	5	3	8
2011	4	0	4
Mar qtr 2011	1	0	1
Jun qtr 2011	0	0	0
Sep qtr 2011	1	0	1
Dec qtr 2011	2	0	2

* Excludes alterations/additions

Figure 5: Dwelling approvals

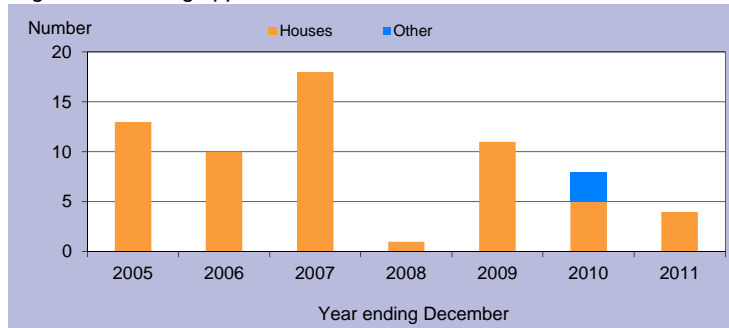
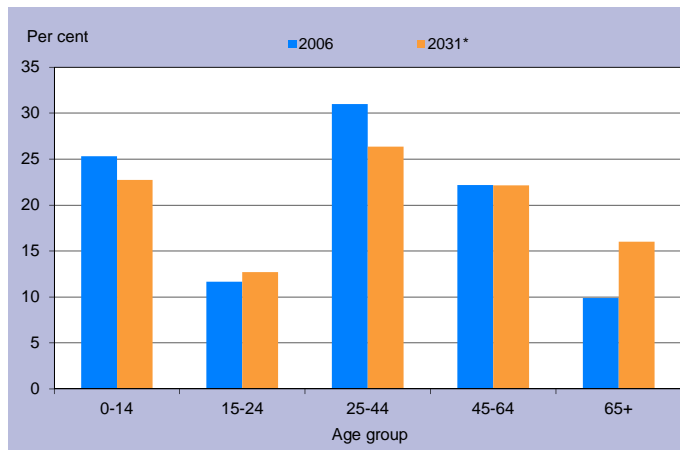


Table 4: Population by age group, Queensland

	Age group					Median age
	0-14	15-24	25-44	45-64	65+	
2006	834,682	578,600	1,169,244	1,013,986	494,396	36.1
	20.4%	14.1%	28.6%	24.8%	12.1%	
2031*	1,205,836	814,688	1,703,235	1,578,741	1,290,350	40.2
	18.3%	12.4%	25.8%	23.9%	19.6%	

* Medium series

Figure 4: Age distribution, Balonne (S), 2006 and 2031*



* Medium series

Household size

In 2006, the average household size for all occupied private dwellings in Balonne Shire Council was 2.6 persons. This compares with an average household size of 2.6 for all of Queensland in the same year (Table 6).

Table 6: Average household size by dwelling type

Dwelling type	Average household size			
	Balonne (S)			Qld
	1996	2001	2006	2006
Separate house	2.9	2.7	2.7	2.8
Semi-detached, flats, etc	2.0	2.3	1.9	1.8
Other dwellings inc caravans	1.8	1.9	1.7	1.8
All occupied private dwellings	2.7	2.6	2.6	2.6

Sources for the Population and Dwelling Profile:

ABS cat nos 3201.3, 3218.0, 3235.3, 8731.0 (preliminary as at December 2011); ABS unpublished births and deaths data, Census of Population and Housing, 1996, 2001 and 2006; Queensland Government Population Projections, 2011.

You are free to copy, communicate and adapt the work, as long as you attribute the authors. This document is licensed under a Creative Commons Attribution 2.5 Australia licence. To view a copy of this licence, visit <http://creativecommons.org/licenses/by/2.5/au>. To attribute this work, cite Population and Dwelling Profile, Balonne Shire Council, Office of Economic and Statistical Research, Queensland Treasury and Trade.

This profile is based on information available to the Office of Economic and Statistical Research at the time of preparation. It does not necessarily reflect the opinions or views of Queensland Treasury and Trade or the Queensland Government. Any statement, opinion or advice expressed or implied in this report is made in good faith but on the basis that the State of Queensland, and its agents and employees are not liable for any damage or loss whatsoever which may occur in relation to its use by the client or any third party.