

Notes:

This map shows the industrial land supply by indicative development time frames. This map does not commit the relevant council or statutory authority to permit development within the time frames specified.

This map is an output of the Industrial Land Monitoring Program for SEQ and is to be interpreted in conjunction with that Program. Information about the Program's methodology can be viewed in the industrial development activity profile and explanatory notes.

While every care is taken to ensure the accuracy of this information, Queensland Treasury makes no representations or warranties about the accuracy, reliability, completeness or suitability for any particular purpose and disclaims all responsibility and all liability (including without limitation, liability in negligence) for all expenses, losses, damages (including indirect or consequential damage) and costs which might be incurred as a result of the information being inaccurate or incomplete in any way and for any reason.

© Queensland Government 2011

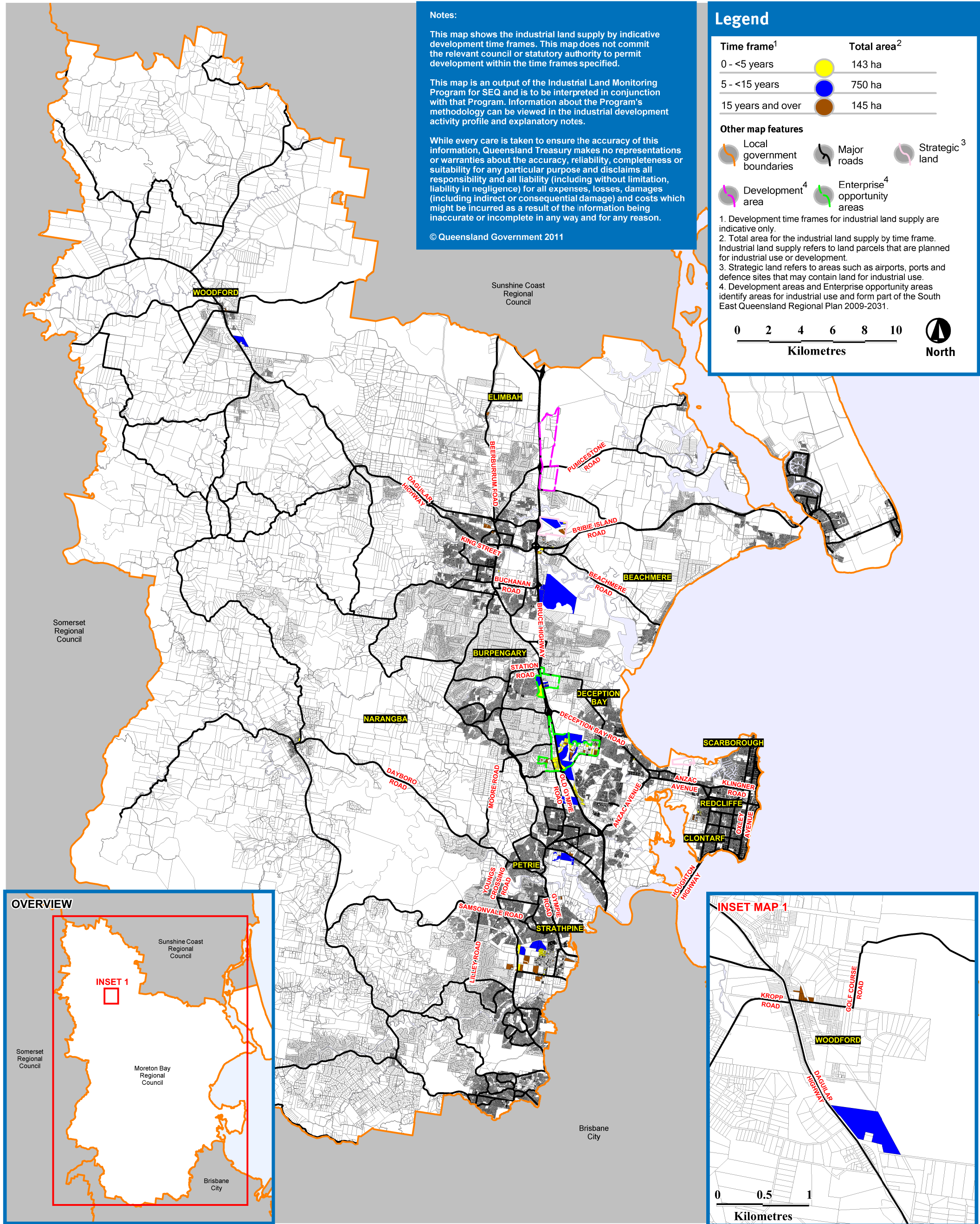
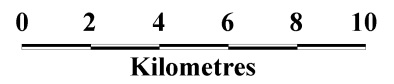
Legend

Time frame ¹	Total area ²
0 - <5 years	143 ha
5 - <15 years	750 ha
15 years and over	145 ha

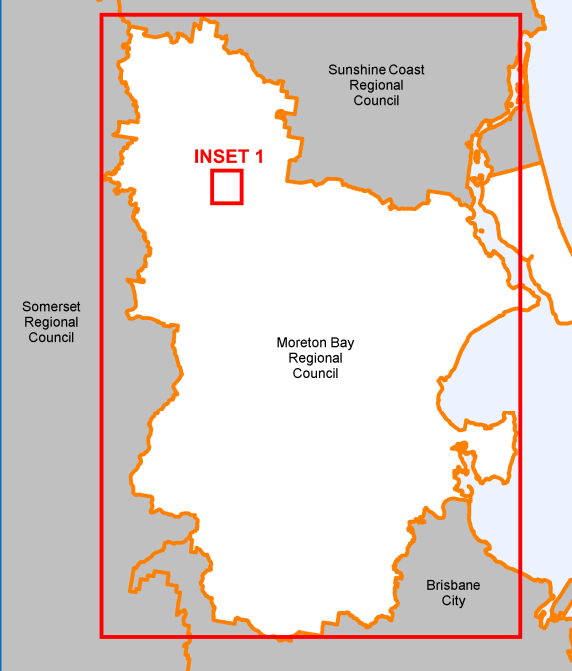
Other map features

- Local government boundaries
- Major roads
- Strategic land³
- Development area⁴
- Enterprise opportunity areas⁴

1. Development time frames for industrial land supply are indicative only.
2. Total area for the industrial land supply by time frame. Industrial land supply refers to land parcels that are planned for industrial use or development.
3. Strategic land refers to areas such as airports, ports and defence sites that may contain land for industrial use.
4. Development areas and Enterprise opportunity areas identify areas for industrial use and form part of the South East Queensland Regional Plan 2009-2031.



OVERVIEW



INSET MAP 1

