





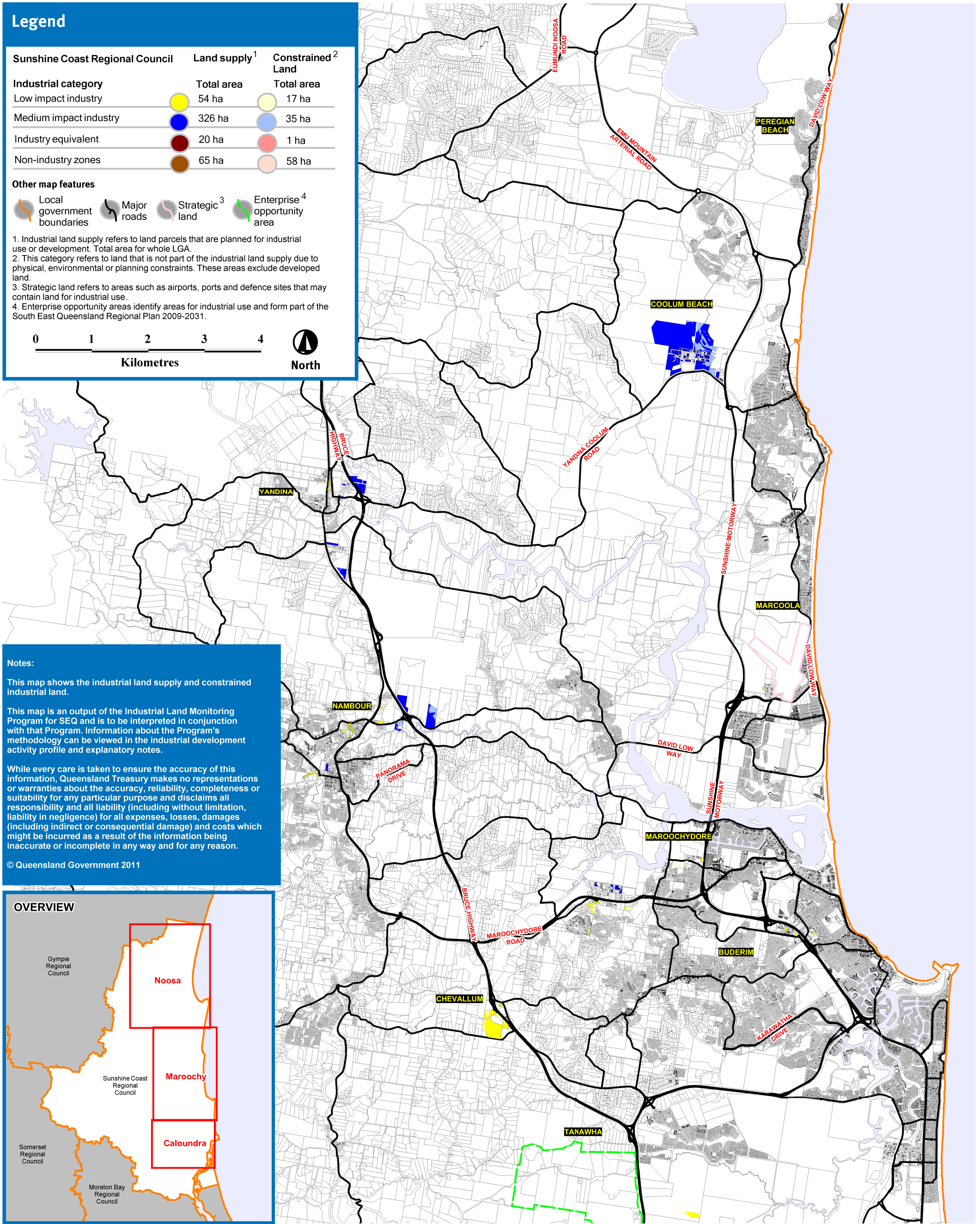
Legend

Sunshine Coast Regional Council	Land supply ¹	Constrained Land ²
Industrial category	Total area	Total area
Low impact industry	54 ha	17 ha
Medium impact industry	326 ha	35 ha
Industry equivalent	20 ha	1 ha
Non-industry zones	65 ha	58 ha

Other map features

-  Local government boundaries
-  Major roads
-  Strategic³ land
-  Enterprise⁴ opportunity area

1. Industrial land supply refers to land parcels that are planned for industrial use or development. Total area for whole LGA.
2. This category refers to land that is not part of the industrial land supply due to physical, environmental or planning constraints. These areas exclude developed land.
3. Strategic land refers to areas such as airports, ports and defence sites that may contain land for industrial use.
4. Enterprise opportunity areas identify areas for industrial use and form part of the South East Queensland Regional Plan 2009-2031.



Notes:

This map shows the industrial land supply and constrained industrial land.

This map is an output of the Industrial Land Monitoring Program for SEQ and is to be interpreted in conjunction with that Program. Information about the Program's methodology can be viewed in the industrial development activity profile and explanatory notes.

While every care is taken to ensure the accuracy of this information, Queensland Treasury makes no representations or warranties about the accuracy, reliability, completeness or suitability for any particular purpose and disclaims all responsibility and all liability (including without limitation, liability in negligence) for all expenses, losses, damages (including indirect or consequential damage) and costs which might be incurred as a result of the information being inaccurate or incomplete in any way and for any reason.

© Queensland Government 2011

OVERVIEW

