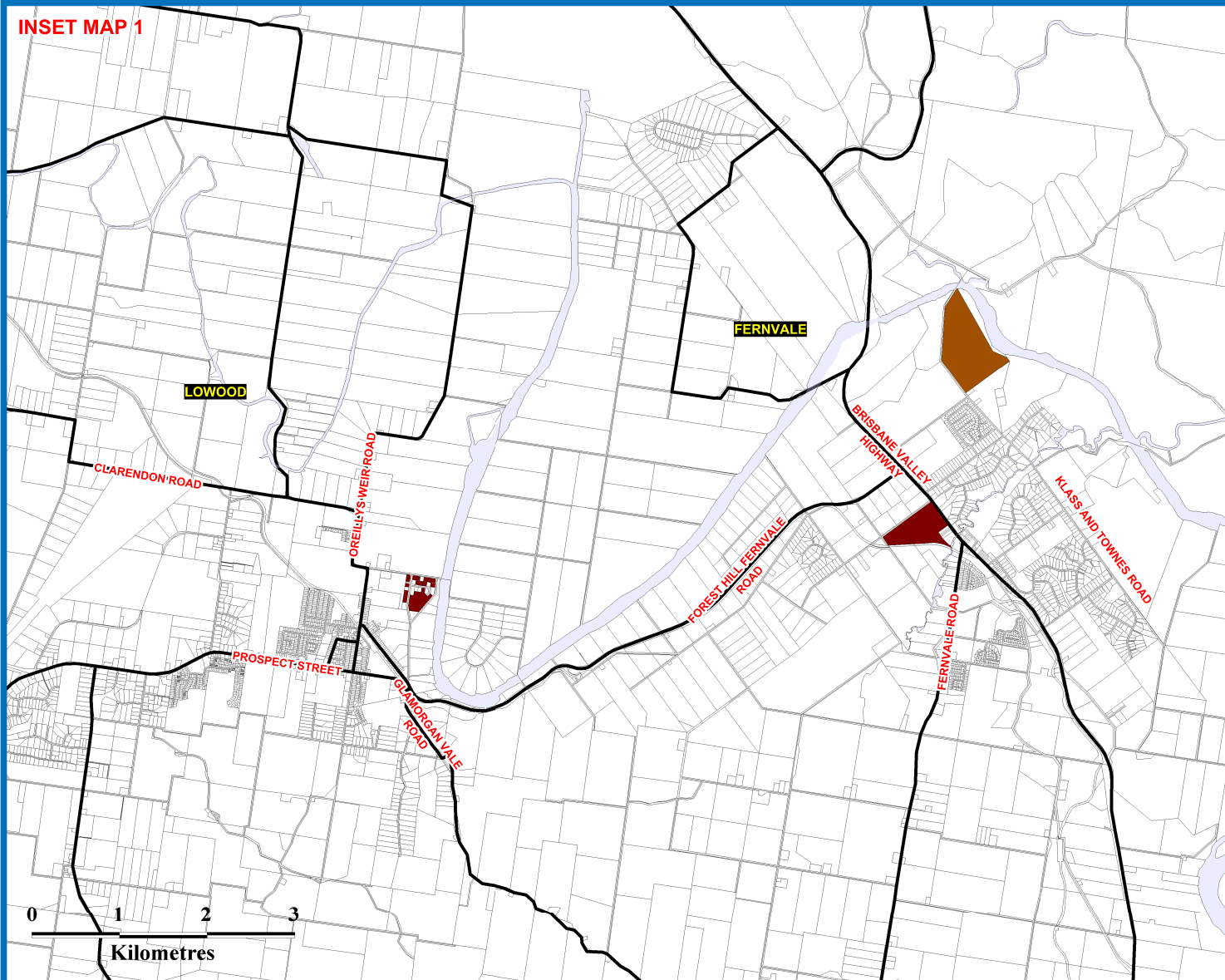
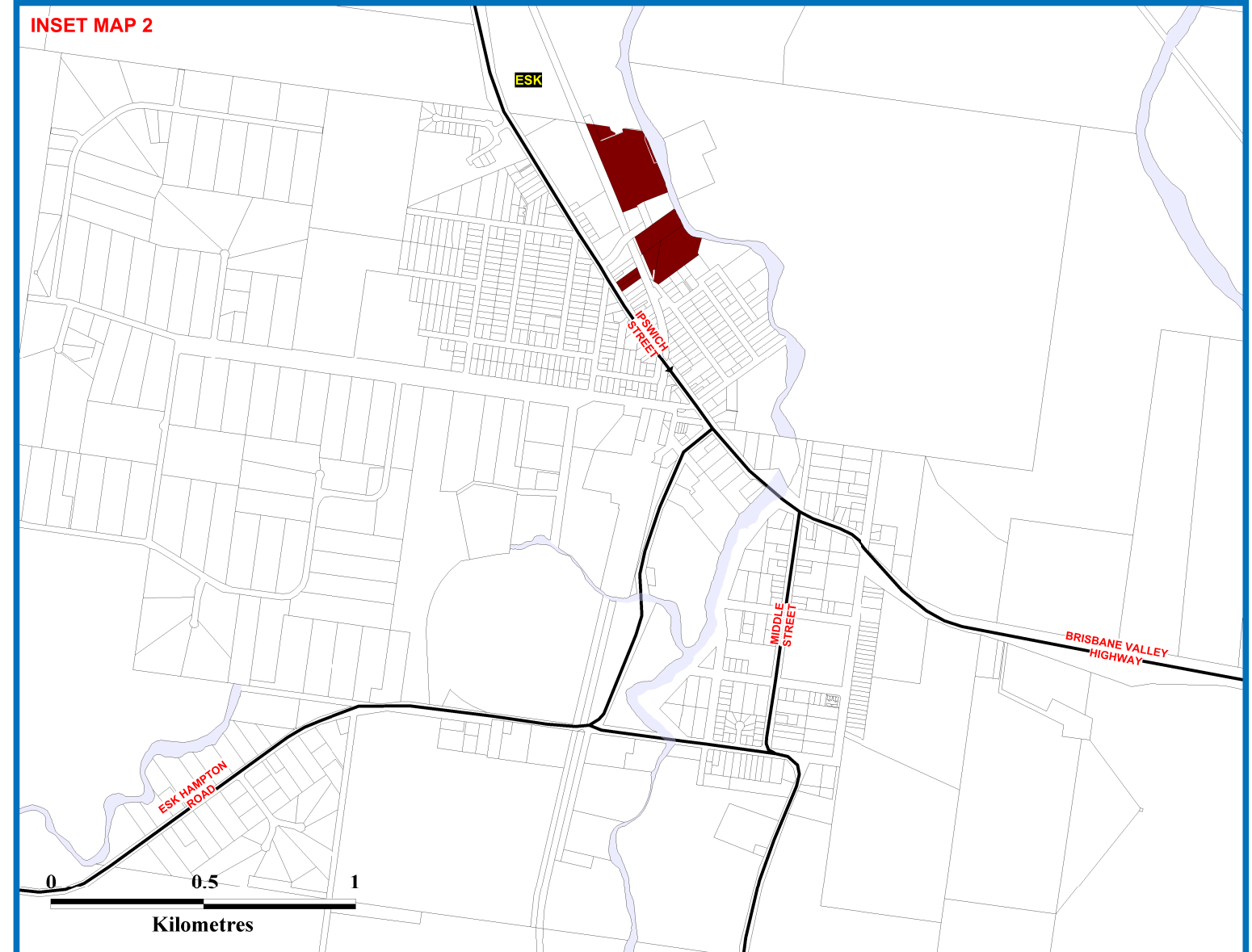


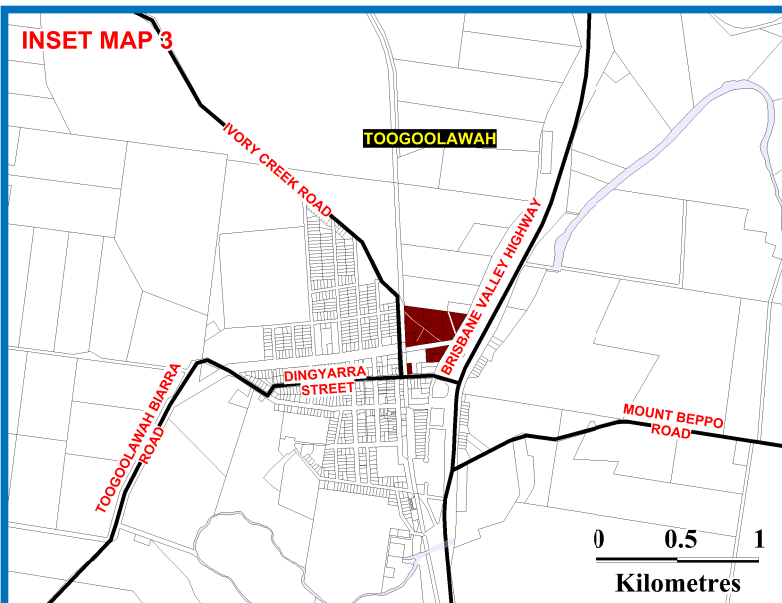
INSET MAP 1



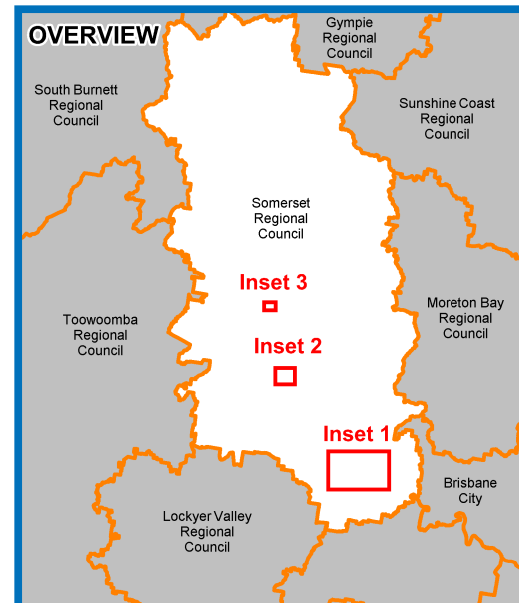
INSET MAP 2



INSET MAP 3



OVERVIEW



Notes:

This map shows the industrial land supply and constrained industrial land.

This map is an output of the Industrial Land Monitoring Program for SEQ and is to be interpreted in conjunction with that Program. Information about the Program's methodology can be viewed in the industrial development activity profile and explanatory notes.

While every care is taken to ensure the accuracy of this information, Queensland Treasury makes no representations or warranties about the accuracy, reliability, completeness or suitability for any particular purpose and disclaims all responsibility and all liability (including without limitation, liability in negligence) for all expenses, losses, damages (including indirect or consequential damage) and costs which might be incurred as a result of the information being inaccurate or incomplete in any way and for any reason.

© Queensland Government 2011

Legend

Industrial category	Land supply <sup>1</sup>		Constrained <sup>2</sup> Land	
	Industry equivalent	Total area	Total area	Total area
Industry equivalent		44 ha		0 ha
Non-industry zones		46 ha		0 ha

Other map features

- Local government boundaries
- Major roads

1. Industrial land supply refers to land parcels that are planned for industrial use or development.  
2. This category refers to land that is not part of the industrial land supply due to physical, environmental or planning constraints. These areas exclude developed land.

