

Notes:

This map shows the industrial land supply and constrained industrial land.

This map is an output of the Industrial Land Monitoring Program for SEQ and is to be interpreted in conjunction with that Program. Information about the Program's methodology can be viewed in the industrial development activity profile and explanatory notes.

While every care is taken to ensure the accuracy of this information, Queensland Treasury makes no representations or warranties about the accuracy, reliability, completeness or suitability for any particular purpose and disclaims all responsibility and all liability (including without limitation, liability in negligence) for all expenses, losses, damages (including indirect or consequential damage) and costs which might be incurred as a result of the information being inaccurate or incomplete in any way and for any reason.

© Queensland Government 2011

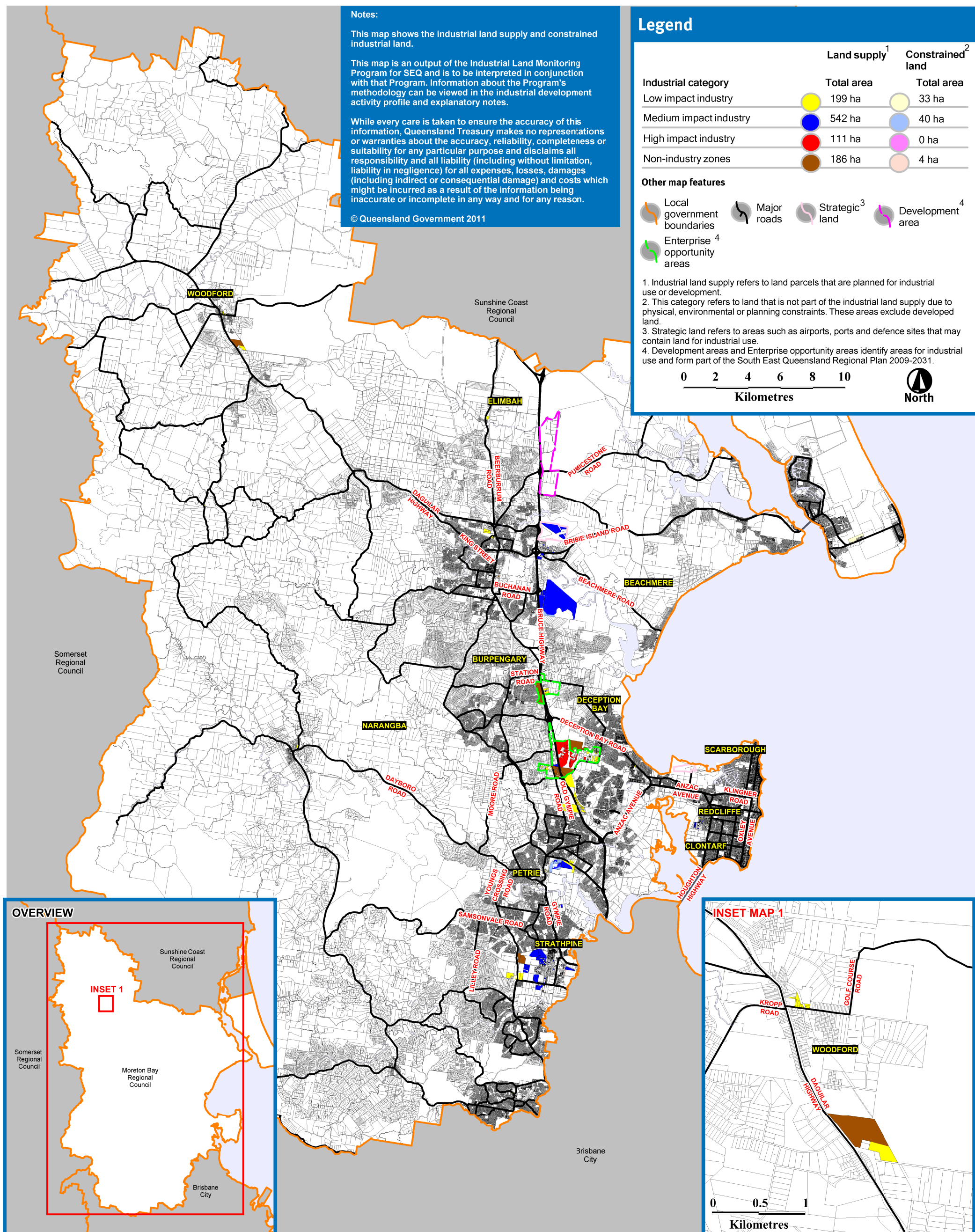
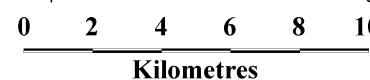
Legend

Industrial category	Land supply ¹		Constrained land ²	
	Symbol	Total area	Symbol	Total area
Low impact industry		199 ha		33 ha
Medium impact industry		542 ha		40 ha
High impact industry		111 ha		0 ha
Non-industry zones		186 ha		4 ha

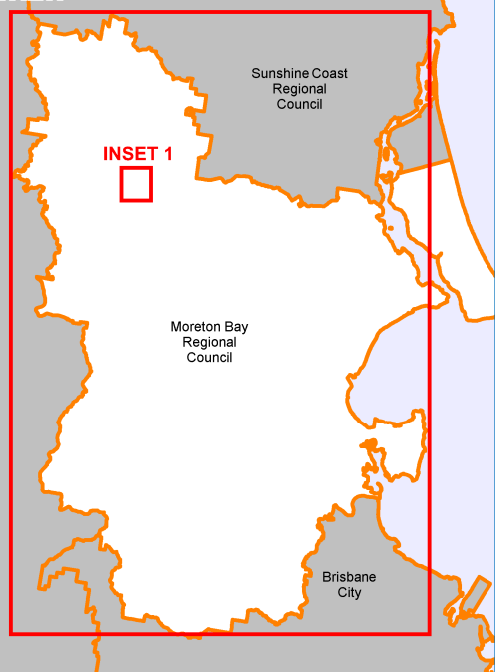
Other map features

- Local government boundaries
- Major roads
- Strategic land³
- Development area⁴
- Enterprise opportunity areas⁴

1. Industrial land supply refers to land parcels that are planned for industrial use or development.
2. This category refers to land that is not part of the industrial land supply due to physical, environmental or planning constraints. These areas exclude developed land.
3. Strategic land refers to areas such as airports, ports and defence sites that may contain land for industrial use.
4. Development areas and Enterprise opportunity areas identify areas for industrial use and form part of the South East Queensland Regional Plan 2009-2031.



OVERVIEW



INSET MAP 1

