

# MIGRATION

## Background Research Paper 3



**Queensland** Government

Prepared by Glen Heyen  
Office of Economic and Statistical Research  
Queensland Treasury

August 2003

**© Queensland Government 2003**

Copyright protects this publication. Except for purposes permitted under the Copyright Act 1968 (Commonwealth), reproduction by whatever means is prohibited without the prior written permission of the Under Treasurer, Queensland Treasury.

**Further Information**

For more information regarding the assumptions and the Background Research Papers for the Queensland Government Population Projections, 2003 please contact:

**Office of Economic and Statistical Research**

**Phone: 07 3224 5326**

**Email: [oesr@treasury.qld.gov.au](mailto:oesr@treasury.qld.gov.au)**

**[www.oesr.qld.gov.au/releases/populationprojections](http://www.oesr.qld.gov.au/releases/populationprojections)**

Papers in this series include:

1. Background Research Paper 1: Assumptions used in the Queensland Population Projections to 2051
2. Background Research Paper 2: Fertility and Mortality
3. Background Research Paper 3: Migration

**Disclaimer**

These population projections have been produced to assist policy makers, researchers and others in their work. However, the parameters affecting the projections are constantly changing, and as such the projections are likely to change. Queensland Treasury does not guarantee or make any representations as to their accuracy or completeness. Any information, statement, opinion or advice expressed or

implied in this document is made on the basis that the State of Queensland, its agents and employees are not liable for any damage or loss whatsoever that may occur in relation to its use.

## CONTENTS

1.	EXECUTIVE SUMMARY	i
2.	INTRODUCTION	1
3.	OVERSEAS MIGRATION	2
	Composition	2
	Trends	2
4.	INTERSTATE MIGRATION	4
	Net migration trends	5
	Interstate arrival and departure trends	6
	Gross migraproduction rates – definition	7
	Gross migraproduction rates – interstate migration (rest of Australia to Queensland, Queensland to rest of Australia)	7
	Gross migraproduction rates – interstate migration (rest of Australia to Queensland statistical divisions; Queensland statistical divisions to rest of Australia)	9
5.	INTRASTATE MIGRATION	10
	Gross migraproduction rates – intrastate migration (Queensland statistical divisions to rest of Queensland; rest of Queensland to Queensland statistical divisions)	10
6.	APPENDIX – Migration probabilities	11

## 1. EXECUTIVE SUMMARY

### *Overseas Migration*

- In the 15 years to 2001-02, Queensland's net overseas migration gains varied from a low of 3,700 persons per year to a high of 21,800 persons per year. Queensland's share of Australia's net overseas migration gain has averaged 13.5% in the past 15 years, and 16.1% in the most recent five year period.

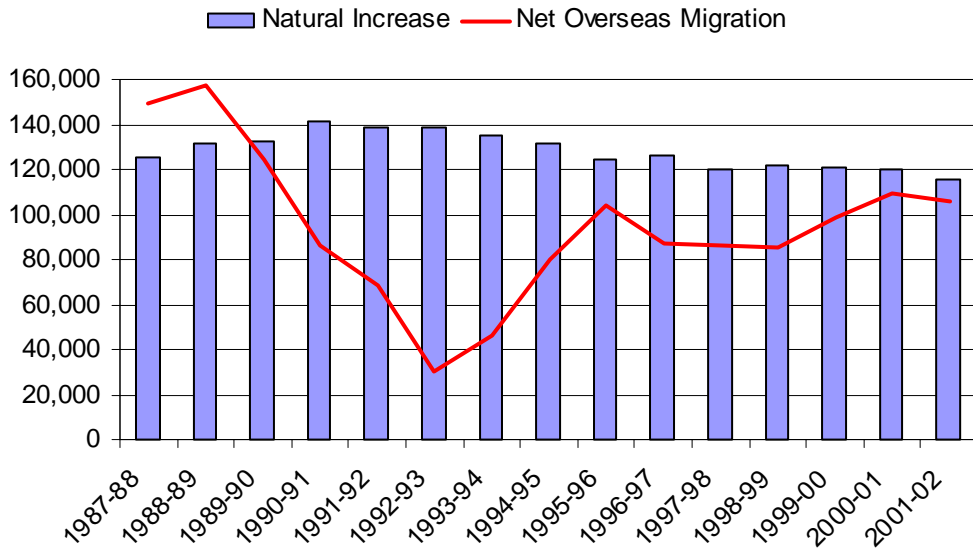
### *Internal Migration*

- Recent net interstate migration levels to Queensland have varied considerably. High annual net interstate migration levels of between 40,000 and 50,000 persons were experienced in the early 1990s, but this fell to between 15,000 and 20,000 persons by the late 1990s.
- Net interstate migration gains for Queensland are now recovering to higher levels. Based on the latest quarterly Medicare change of address data, the Australian Bureau of Statistics estimates that net interstate migration to Queensland for the 12 months ended December 2002 was around 36,500 persons.
- In the past 15 years, interstate arrival numbers to Queensland have varied between 91,800 persons and 119,000 persons per year. There has been considerable fluctuation over this time period.
- In comparison, interstate departures from Queensland on a per capita basis have remained relatively consistent in the past 15 years. The number has gradually increased from 64,100 persons to 81,800 persons per year over this time period.
- One method used to measure migration intensity is to calculate the area under the age-specific migration curve. Such a measure is called the Gross Migration Rate (GMR). When expressed as a probability, a GMR for migration between region A and region B represents the number of moves that a person in region A can expect to make in his or her lifetime to region B.
- Data from the 1996 and 2001 Censuses on the usual residence of individuals at the time of the census and one year prior to the census show that the GMR for in-migration to Queensland from the rest of Australia was 0.460 in 1995-96 and 0.544 in 2000-01, while the out-migration rates were 1.483 in 1995-96 and 1.393 in 2000-01.
- GMRs for in-flows from the rest of Australia (interstate migration) to the Brisbane and Moreton Statistical Divisions increased considerably between 1995-96 and 2000-01 (from 0.166 to 0.200 and from 0.130 to 0.174 respectively). Increases of this magnitude were not recorded for other statistical divisions.
- GMRs for in-flows from the rest of Queensland (intrastate migration) to the Brisbane and Moreton Statistical Divisions also increased between 1995-96 and 2000-01 (from 1.445 to 1.708 and from 0.740 to 0.914 respectively).

## 2. INTRODUCTION

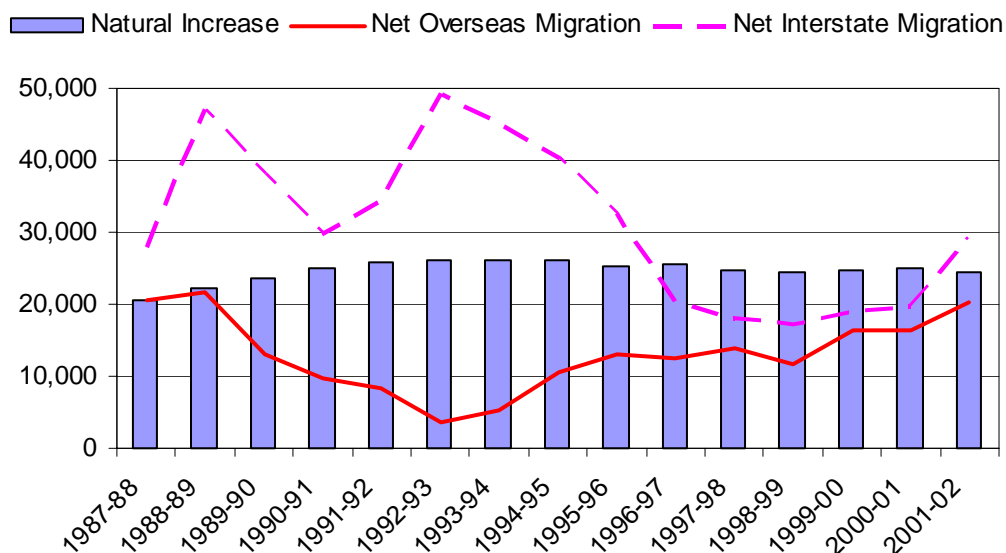
While natural increase in Australia and Queensland has been relatively stable in recent decades, migration levels have shown considerable variation (see Figures 1 and 2).

**Figure 1: Natural increase and net overseas migration, Australia, 1987-88 to 2001-02**



Source: Australian Bureau of Statistics, Australian Demographic Statistics, Cat. no. 3101.0

**Figure 2: Natural increase, net overseas migration and net interstate migration, Queensland 1987-88 to 2001-02**



Source: Australian Bureau of Statistics, Australian Demographic Statistics, Cat. no. 3101.0

Variation in overseas migration levels are largely a result of changes in the Commonwealth Government's migrant visa quota and the breakdown of this quota by class, the unrestricted movement between Australia and New Zealand, and relative economic and social conditions in Australia and overseas. Interstate migration is a result of amenity with a well-defined net movement from colder to warmer climates, cost of living differentials between states and territories, and differences in state and territory economies. The number of permanent and long-term arrivals into Australia can affect the level of interstate migration, due to overseas migrants moving to Queensland after settling initially in other states and territories.

### **3. OVERSEAS MIGRATION**

#### **Composition**

The overseas migration component of population growth is comprised of three parts: permanent movement, long-term movement and category jumping.

Permanent arrivals (settlers) comprise travellers who hold migrant visas (regardless of stated intended period of stay), New Zealand citizens who indicate an intention to settle and those who are otherwise eligible to settle (e.g. overseas-born children of Australian citizens). Permanent departures comprise movements of persons who on departure state that they do not intend to return to Australia.

Long-term arrivals comprise overseas visitors who intend to stay in Australia for 12 months or more (but not permanently) and Australian residents returning after an absence of 12 months or more overseas. Long-term departures comprise Australian residents who intend to stay abroad for 12 months or more (but not permanently) and overseas visitors departing who stayed 12 months or more in Australia.

Category jumping describes changes between actual and intended duration of stay of travellers to and from Australia, such that their classification as short-term or long-term/permanent is different at departure compared with arrival.

#### **Trends**

Since 1987-88, net overseas migration for Australia has varied from a net gain of 157,436 persons in 1988-89 to a much lower net gain of 30,042 persons in 1992-93. Similarly, Queensland experienced net overseas migration gains of 21,776 persons in 1988-89 and 3,719 persons in 1992-93 (see Table 1). Queensland's share of these net flows has averaged 13.5% between 1986-87 and 2001-02, but has averaged 16.1% in the most recent five year period.

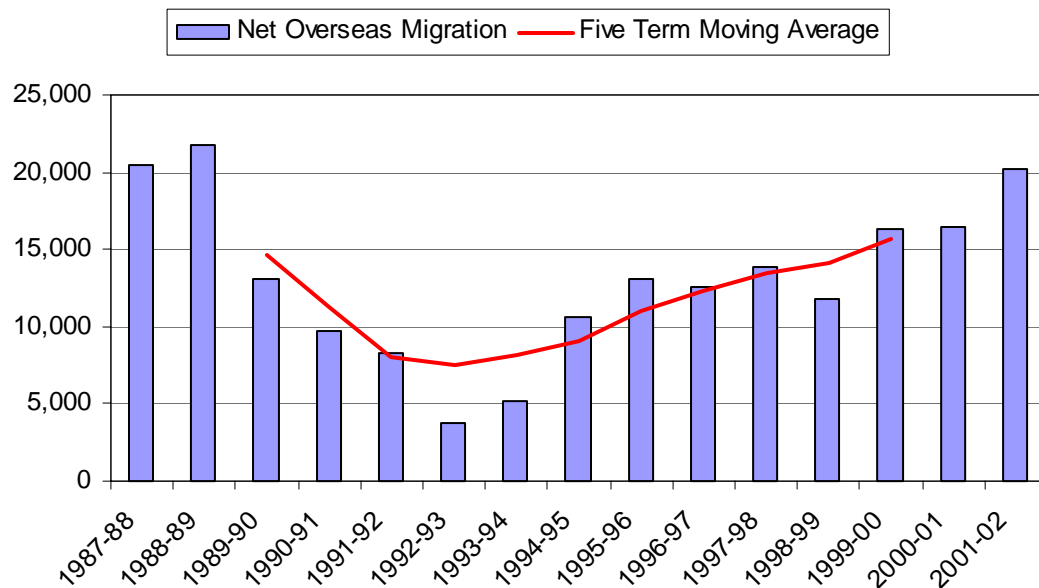
**Table 1: Net overseas migration, Queensland and Australia, 1987-88 to 2001-02**

	Queensland	Australia	Qld as a % of Aust
1987-88	20,442	149,341	13.7
1988-89	21,776	157,436	13.8
1989-90	13,142	124,647	10.5
1990-91	9,743	86,432	11.3
1991-92	8,250	68,580	12.0
1992-93	3,719	30,042	12.4
1993-94	5,241	46,549	11.3
1994-95	10,580	80,125	13.2
1995-96	13,051	104,137	12.5
1996-97	12,622	87,079	14.5
1997-98	13,800	86,354	16.0
1998-99	11,744	85,120	13.8
1999-00	16,276	99,056	16.4
2000-01	16,419	109,729	15.0
2001-02	20,236	106,055	19.1

Source: Australian Bureau of Statistics, Australian Demographic Statistics, Cat. no. 3101.0

When a five term moving average curve is applied to net overseas migration for Queensland for the 15 years to 2001-02, the low and high points are 7,500 persons and 15,700 persons respectively (see Figure 3).

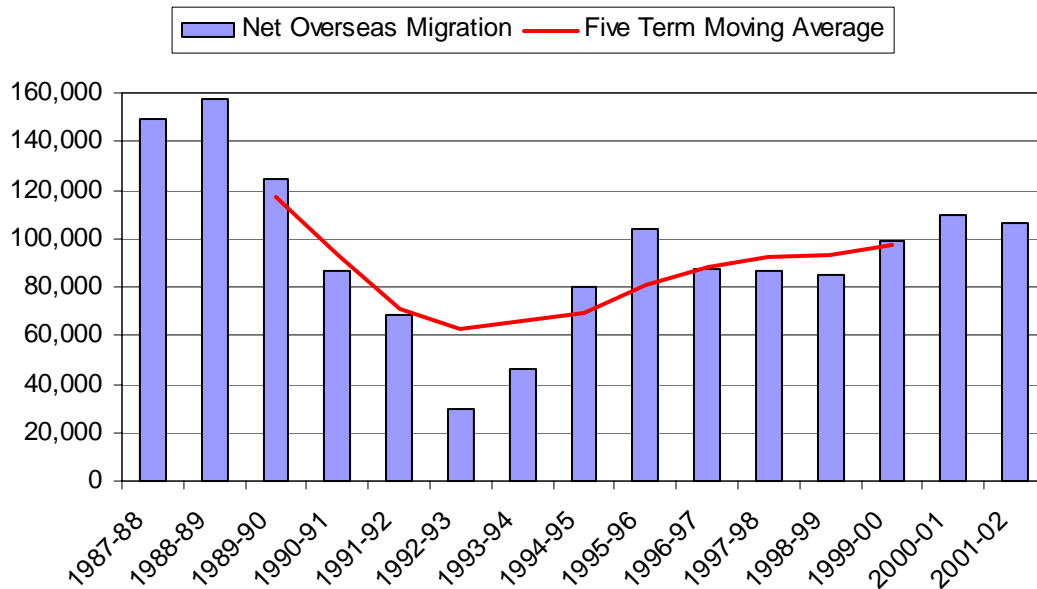
**Figure 3: Net overseas migration, Queensland, 1987-88 to 2001-02**



Source: Australian Bureau of Statistics, Australian Demographic Statistics, Cat. no. 3101.0

For net overseas migration to Australia, a five term moving average curve produces low and high points of 62,300 persons and 117,300 persons respectively for the 15 years to 2001-02 (see Figure 4).

**Figure 4: Net overseas migration, Australia, 1987-88 to 2001-02**



Source: Australian Bureau of Statistics, Australian Demographic Statistics, Cat. no. 3101.0

#### 4. INTERSTATE MIGRATION

There are three main sources of interstate migration data.

Firstly, five yearly censuses undertaken by the Australian Bureau of Statistics provide information on the usual residence of individuals at the time of the census and one year prior to the census.

Secondly, administrative data on change of address are collected quarterly from Medicare by the Health Insurance Commission. These data include the postcode of origin and destination, and the age and sex of the mover.

Lastly, the Australian Bureau of Statistics publishes quarterly interstate arrival and departure estimates, which are then used as a key input to estimated resident population at the state and territory level. The interstate migration estimates are modelled using both census migration data and Medicare change of address migration data.

## Net migration trends

Interstate migration is the most volatile component of population change in Queensland. Interstate migration estimates published by the Australian Bureau of Statistics indicate that Queensland has experienced net interstate migration gains every year in the recent past, with peaks of over 47,000 and 49,000 in 1988-89 and 1992-93 respectively. Annual net gains fell to between 15,000 and 20,000 persons in the late 1990s, but are now recovering to higher levels (see Table 2).

Based on the latest quarterly Medicare change of address data, the Australian Bureau of Statistics estimates that net interstate migration to Queensland for the 12 months ended December 2002 was around 36,500 persons.

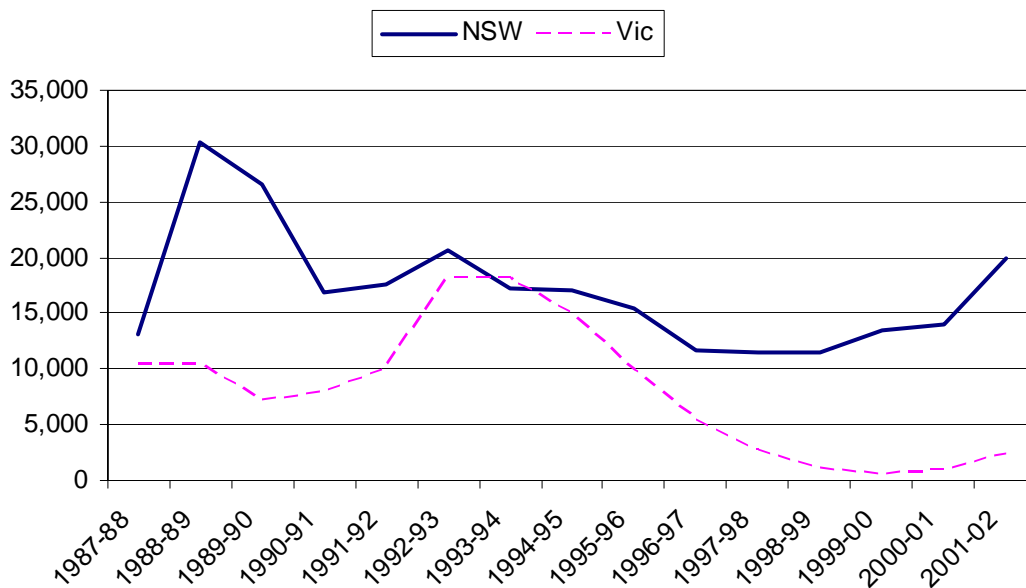
**Table 2: Net interstate migration, Queensland, 1987-88 to 2001-02**

1987-88	27,720
1988-89	47,062
1989-90	38,102
1990-91	29,709
1991-92	34,099
1992-93	49,162
1993-94	44,936
1994-95	40,224
1995-96	32,614
1996-97	20,179
1997-98	17,967
1998-99	17,233
1999-00	19,012
2000-01	19,654
2001-02	29,028

Source: Australian Bureau of Statistics, Australian Demographic Statistics, Cat. no. 3101.0

New South Wales and Victoria are the largest sources of interstate movers to Queensland. The recovery in net flows to Queensland in 2001-02 is mainly a result of a large increase in net flows from New South Wales in 2001-02, which were the highest in nine years (see Figure 5).

**Figure 5: Net Interstate Migration to Queensland, from New South Wales and Victoria, 1987-88 to 2001-02**

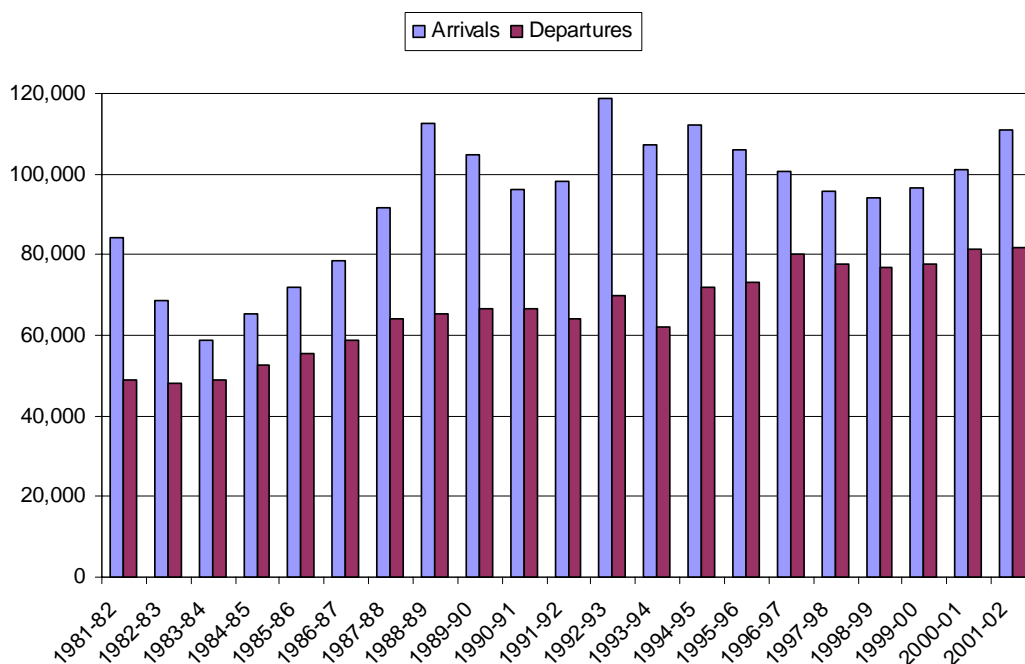


Source: Australian Bureau of Statistics, Australian Demographic Statistics, Cat. no. 3101.0

### Interstate arrival and departure trends

In 2001-02, the estimated number of interstate arrivals to Queensland (110,876 persons) was the highest since 1994-95. The estimated number of interstate departures in 2001-02 was the highest in the past 20 years (see Figure 6 and Table 3). There is more volatility in the arrivals series compared with the departures series.

**Figure 6: Interstate Arrivals and Departures, Queensland, 1981-82 to 2001-02**



Source: Australian Bureau of Statistics, Australian Demographic Statistics, Cat. no. 3101.0

**Table 3: Interstate Arrivals and Departures, Queensland, 1981-82 to 2001-02**

	Arrivals	Departures
1981-82	84,229	48,776
1982-83	68,755	47,924
1983-84	58,824	48,865
1984-85	65,469	52,549
1985-86	72,014	55,514
1986-87	78,464	58,746
1987-88	91,835	64,115
1988-89	112,568	65,506
1989-90	104,860	66,758
1990-91	96,359	66,650
1991-92	98,378	64,279
1992-93	118,967	69,805
1993-94	107,060	62,124
1994-95	112,261	72,037
1995-96	105,861	73,247
1996-97	100,501	80,322
1997-98	95,821	77,854
1998-99	93,977	76,744
1999-00	96,769	77,757
2000-01	101,101	81,447
2001-02	110,876	81,848

Source: Australian Bureau of Statistics, Australian Demographic Statistics, Cat. no. 3101.0

### **Gross migraproduction rates – definition**

One method of measuring migration is to calculate the area under the age-specific migration curve. Such a measure is called the Gross Migraproduction Rate (GMR) and is analogous to the Total Fertility Rate in that it is the sum of age-specific rates. Unlike other measures such as the total numbers of migrants or the crude migration rate (total numbers of migrants divided by the total population) it has the advantage of standardising for age structure.

Different GMRs can be calculated for different types of migration flow. For example, a GMR for all in-migration to a region, a GMR for all out-migration from a region, a GMR for migration between region A and region B, a GMR for rural to urban flows, and so on.

When expressed as an expectation, a GMR for migration between region A and region B represents the number of moves that a person in region A can expect to make in his or her lifetime to region B.

### **Gross migraproduction rates – interstate migration (rest of Australia to Queensland; Queensland to rest of Australia)**

Data from the 1996 and 2001 Censuses on the usual residence of individuals at the time of the census and one year prior to the census show that the GMR for in-migration to Queensland from the rest of Australia was 0.460 in 1995-96 and 0.544 in 2000-01 (see Table 4). The GMR for out-migration from Queensland to the rest of Australia was 1.483 in 1995-96 and 1.393 in 2000-01 (see Table 5).

Note that the data refer to the 12 month period prior to each census, which is held in August, and as such the financial year is used as an approximation. It is also not possible to measure the effects of return migration on the data. Persons who move from region A to region B and

then return to region A within the 12 month period are treated as non-movers. In addition, multiple moves are not recorded. Persons who move from region A to region B and then to region C within the 12 month period are treated as migrants from region A to region C only. No account for mortality has been made in the following results.

**Table 4: Gross migraproduction rates, interstate flows from rest of Australia to Queensland, 1995-96 and 2000-01**

Age Group	1995-96			2000-01		
	Number of Movers from ROA (a) to Qld	ROA (a) Population	Migration Probability	Number of Movers from ROA (a) to Qld	ROA (a) Population	Migration Probability
00-04yrs	7,269	1,031,942	0.0070	7,294	984,141	0.0074
05-09yrs	6,953	1,025,300	0.0068	7,446	1,052,716	0.0071
10-14yrs	5,674	1,025,278	0.0055	6,059	1,072,994	0.0056
15-19yrs	6,857	990,878	0.0069	7,238	1,057,238	0.0068
20-24yrs	12,223	1,064,844	0.0115	11,215	990,091	0.0113
25-29yrs	11,156	1,043,313	0.0107	11,756	999,948	0.0118
30-34yrs	8,979	1,133,667	0.0079	10,197	1,131,629	0.0090
35-39yrs	7,358	1,118,287	0.0066	8,391	1,131,363	0.0074
40-44yrs	5,310	1,050,947	0.0051	6,488	1,176,965	0.0055
45-49yrs	4,343	989,196	0.0044	5,394	1,079,886	0.0050
50-54yrs	3,049	763,373	0.0040	5,013	1,007,776	0.0050
55-59yrs	2,227	631,878	0.0035	4,238	844,944	0.0050
60-64yrs	1,756	561,063	0.0031	3,372	661,195	0.0051
65-69yrs	1,438	549,097	0.0026	2,353	557,932	0.0042
70-74yrs	974	475,139	0.0020	1,946	517,400	0.0038
75-79yrs	664	323,612	0.0021	1,576	439,043	0.0036
80-84yrs	388	223,768	0.0017	1,080	298,403	0.0036
85+yrs	290	156,194	0.0019	787	260,367	0.0030
TOTAL	86,906	14,157,776	0.0061	101,844	15,264,030	0.0067
		<b>GMR =</b>	<b>0.460</b>		<b>GMR =</b>	<b>0.544</b>

(a) ROA = Rest of Australia.

Source: Australian Bureau of Statistics, 1996 and 2001 Censuses of Population and Housing, unpublished migration data.

**Table 5: Gross migraproduction rates, interstate flows from Queensland to rest of Australia, 1995-96 and 2000-01**

Age Group	1995-96			2000-01		
	Number of Movers from Qld to ROA (a)	Qld Population	Migration Probability	Number of Movers from Qld to ROA (a)	Qld Population	Migration Probability
00-04yrs	5,464	236,675	0.023	4,759	234,038	0.020
05-09yrs	4,344	231,512	0.019	4,144	252,492	0.016
10-14yrs	3,384	239,812	0.014	3,061	256,773	0.012
15-19yrs	4,810	230,124	0.021	4,511	253,557	0.018
20-24yrs	10,666	248,544	0.043	8,769	234,227	0.037
25-29yrs	10,002	234,595	0.043	9,475	233,915	0.041
30-34yrs	6,959	247,492	0.028	7,182	256,728	0.028
35-39yrs	4,970	244,174	0.020	4,937	254,527	0.019
40-44yrs	3,421	231,121	0.015	3,579	268,362	0.013
45-49yrs	2,597	221,433	0.012	2,704	246,175	0.011
50-54yrs	1,812	172,153	0.011	2,473	234,676	0.011
55-59yrs	1,311	137,892	0.010	1,939	199,102	0.010
60-64yrs	1,041	116,939	0.009	1,442	152,461	0.009
65-69yrs	991	112,844	0.009	1,057	122,372	0.009
70-74yrs	741	96,651	0.008	884	110,014	0.008
75-79yrs	445	67,292	0.007	689	91,098	0.008
80-84yrs	300	44,705	0.007	452	62,596	0.007
85+yrs	161	30,973	0.005	285	52,668	0.005
TOTAL	63,419	3,144,932	0.020	62,342	3,515,781	0.018
		<b>GMR =</b>	<b>1.483</b>		<b>GMR =</b>	<b>1.393</b>

(a) ROA = Rest of Australia.

Source: Australian Bureau of Statistics, 1996 and 2001 Censuses of Population and Housing, unpublished migration data..

**Gross migraproduction rates – interstate migration (rest of Australia to Queensland statistical divisions; Queensland statistical divisions to rest of Australia)**

Data from the 1996 and 2001 Censuses on the usual residence of individuals at the time of the census and one year prior to the census show that the GMRs for in-migration and out-migration to Queensland from the rest of Australia and from Queensland to the rest of Australia differ greatly at the statistical division level (see Tables 6 and 7).

**Table 6: Gross migraproduction rates, interstate flows from rest of Australia to Queensland statistical divisions, 1995-96 and 2000-01**

Statistical Division	1995-96	2000-01
Brisbane	0.166	0.200
Moreton	0.130	0.174
Wide Bay-Burnett	0.028	0.031
Darling Downs	0.019	0.023
South West	0.002	0.002
Fitzroy	0.015	0.015
Central West	0.001	0.001
Mackay	0.014	0.017
Northern	0.028	0.028
Far North	0.035	0.033
North West	0.005	0.005

Source: Australian Bureau of Statistics, 1996 and 2001 Censuses of Population and Housing, unpublished migration data.

**Table 7: Gross migraproduction rates, interstate flows from Queensland statistical divisions to rest of Australia, 1995-96 and 2000-01**

Statistical Division	1995-96	2000-01
Brisbane	1.172	1.126
Moreton	2.110	1.917
Wide Bay-Burnett	1.402	1.219
Darling Downs	1.170	1.168
South West	1.420	1.243
Fitzroy	1.108	1.051
Central West	1.554	1.511
Mackay	1.492	1.594
Northern	2.079	1.722
Far North	2.179	1.945
North West	2.040	2.115

Source: Australian Bureau of Statistics, 1996 and 2001 Censuses of Population and Housing, unpublished migration data.

## 5. INTRASTATE MIGRATION

There are two main sources of intrastate (within the state) migration data. Firstly, five yearly censuses undertaken by the Australian Bureau of Statistics provide information on the usual residence of individuals at the time of the census and one year prior to the census. These data are collected at small geographical levels, including for statistical divisions. Secondly, administrative data are collected quarterly from Medicare changes of address by the Health Insurance Commission. These data include the postcode of origin and destination, and the age and sex of the mover. The postcode data can be converted to a statistical division level.

### **Gross migraproduction rates – intrastate migration (Queensland statistical divisions to rest of Queensland; rest of Queensland to Queensland statistical divisions)**

Data from the 1996 and 2001 Censuses on the usual residence of individuals at the time of the census and one year prior to the census reveal that there is significant spatial variability in GMRs for in-migration and out-migration between Queensland statistical divisions (see Tables 8 and 9).

**Table 8: Gross migraproduction rates, intrastate flows from rest of Queensland to Queensland statistical divisions, 1995-96 and 2000-01**

Statistical Division	1995-96	2000-01
Brisbane	1.445	1.708
Moreton	0.740	0.914
Wide Bay-Burnett	0.272	0.296
Darling Downs	0.219	0.248
South West	0.040	0.041
Fitzroy	0.206	0.223
Central West	0.019	0.028
Mackay	0.143	0.160
Northern	0.199	0.203
Far North	0.193	0.195
North West	0.063	0.071

Source: Australian Bureau of Statistics, 1996 and 2001 Censuses of Population and Housing, unpublished migration data.

**Table 9: Gross migraproduction rates, intrastate flows from Queensland statistical divisions to rest of Queensland, 1995-96 and 2000-01**

Statistical Division	1995-96	2000-01
Brisbane	1.626	1.809
Moreton	2.819	3.120
Wide Bay-Burnett	4.129	4.731
Darling Downs	3.699	4.405
South West	6.257	9.304
Fitzroy	3.748	4.776
Central West	7.813	10.902
Mackay	4.051	4.896
Northern	3.383	3.667
Far North	3.140	3.699
North West	7.682	9.920

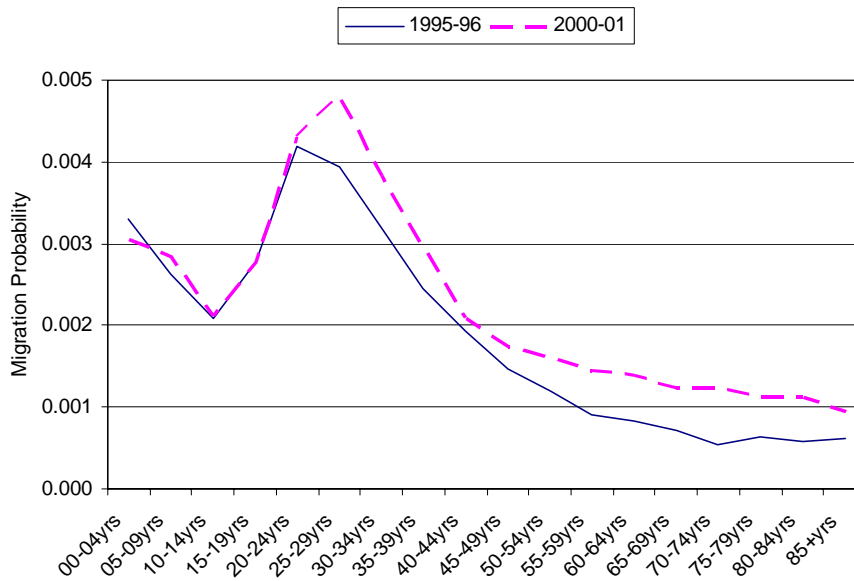
Source: Australian Bureau of Statistics, 1996 and 2001 Censuses of Population and Housing, unpublished migration data.

## 6. APPENDIX – MIGRATION PROBABILITIES

Migration probabilities by five-year age group for in- and out-flows for each statistical division are shown below, for flows within Queensland and between Queensland and the rest of Australia.

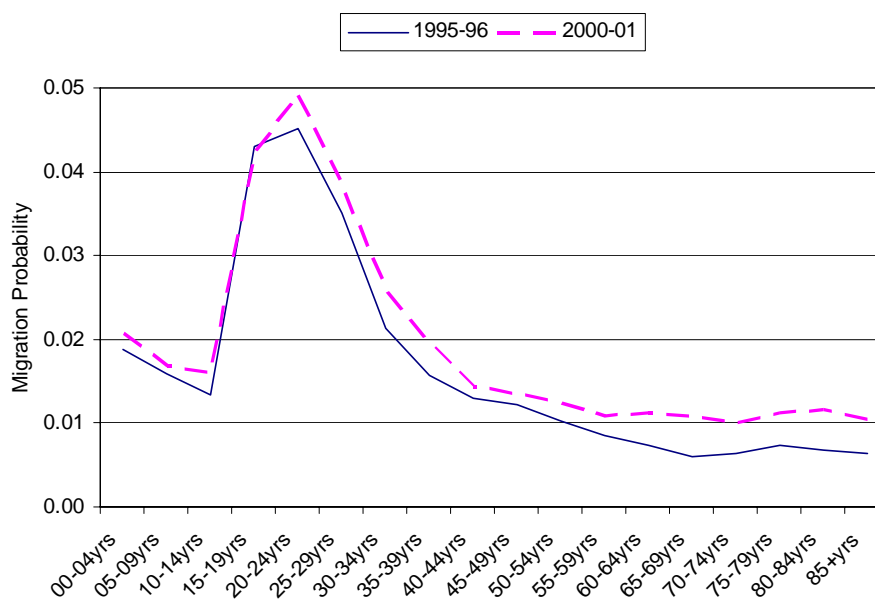
### Brisbane Statistical Division

Migration probabilities, rest of Australia to Brisbane SD, 1995-96 and 2000-01



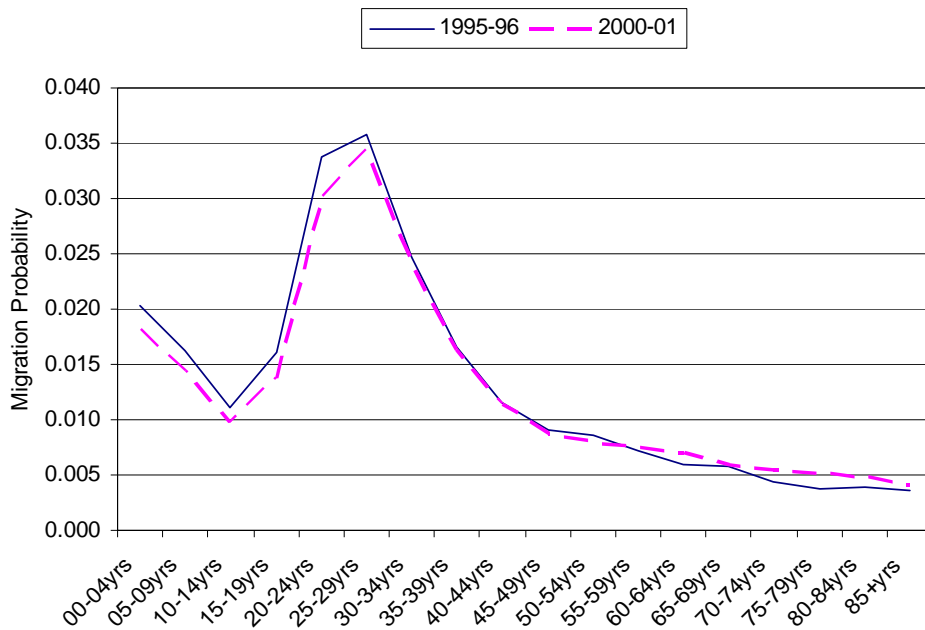
Source: Australian Bureau of Statistics, 1996 and 2001 Censuses of Population and Housing, unpublished migration data.

Migration probabilities, rest of Queensland to Brisbane SD, 1995-96 and 2000-01



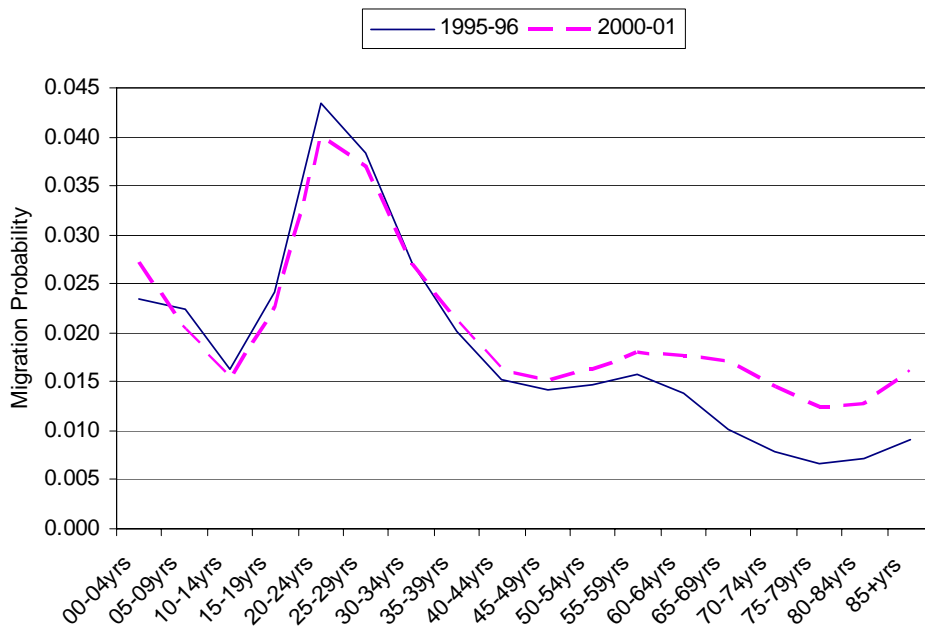
Source: Australian Bureau of Statistics, 1996 and 2001 Censuses of Population and Housing, unpublished migration data.

Migration probabilities, Brisbane SD to rest of Australia, 1995-96 and 2000-01



Source: Australian Bureau of Statistics, 1996 and 2001 Censuses of Population and Housing, unpublished migration data.

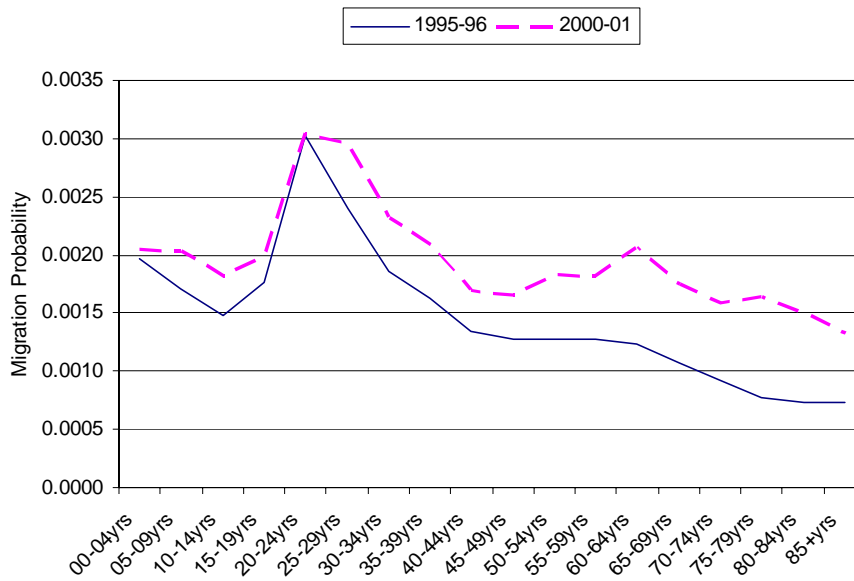
Migration probabilities, Brisbane SD to rest of Queensland, 1995-96 and 2000-01



Source: Australian Bureau of Statistics, 1996 and 2001 Censuses of Population and Housing, unpublished migration data.

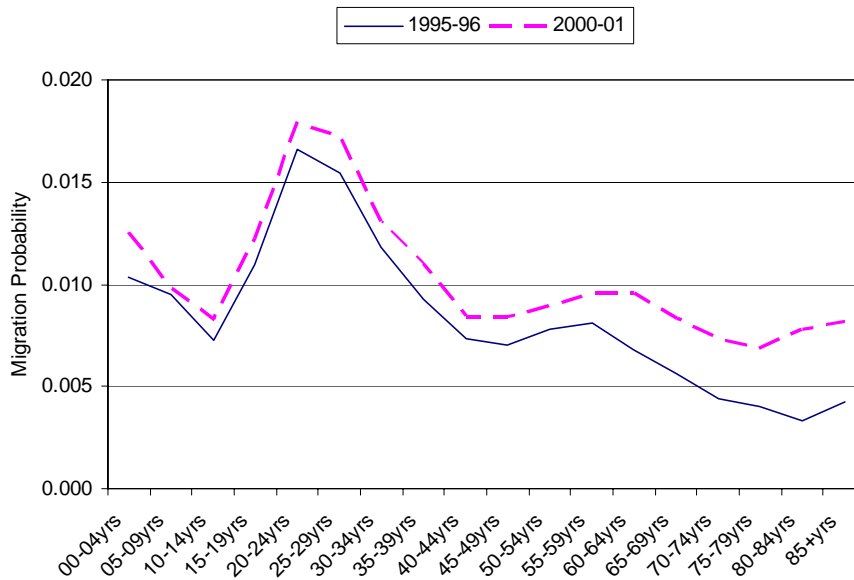
## Moreton Statistical Division

### Migration Probabilities, Rest of Australia to Moreton SD, 1995-96 and 2000-01



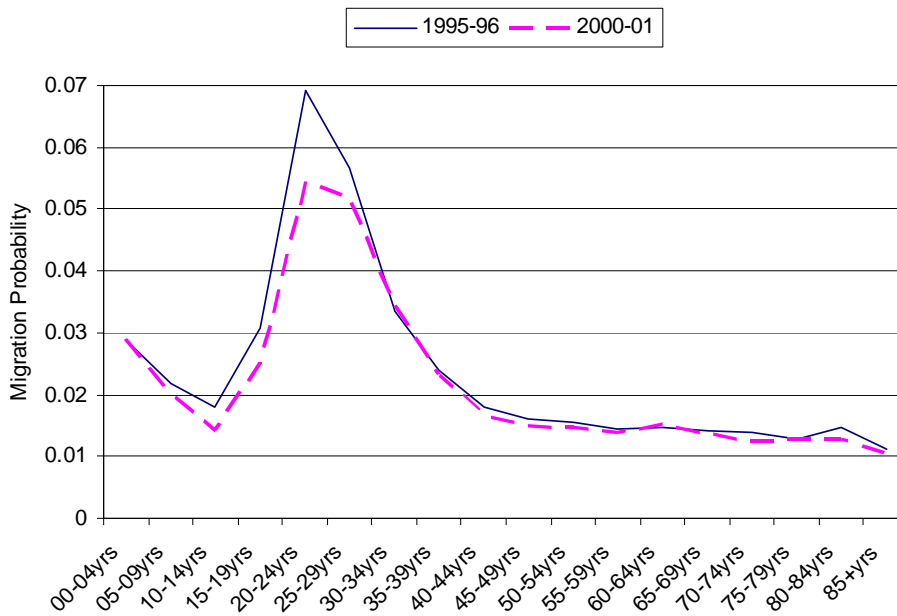
Source: Australian Bureau of Statistics, 1996 and 2001 Censuses of Population and Housing, unpublished migration data.

### Migration Probabilities, Rest of Queensland to Moreton SD, 1995-96 and 2000-01



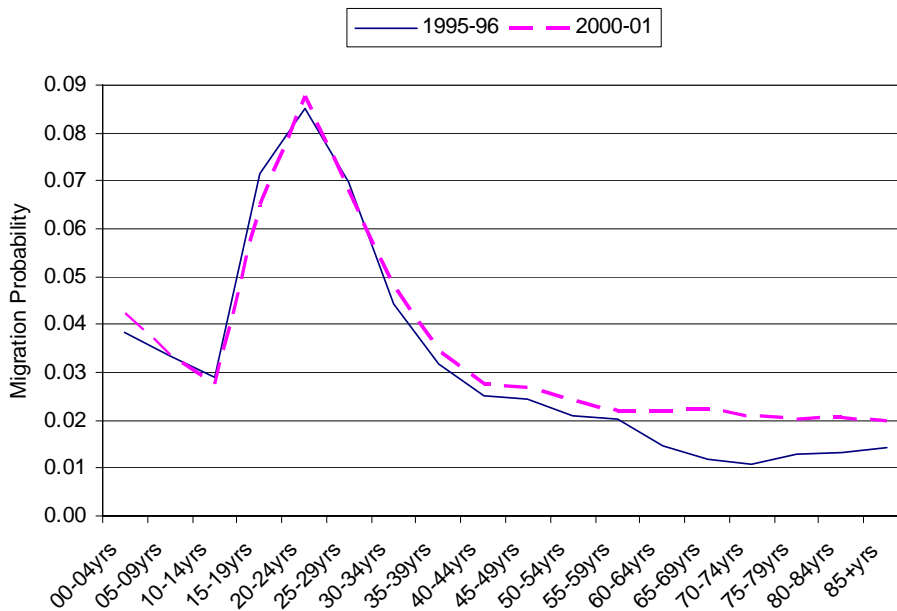
Source: Australian Bureau of Statistics, 1996 and 2001 Censuses of Population and Housing, unpublished migration data.

### Migration Probabilities, Moreton SD to Rest of Australia, 1995-96 and 2000-01



Source: Australian Bureau of Statistics, 1996 and 2001 Censuses of Population and Housing, unpublished migration data.

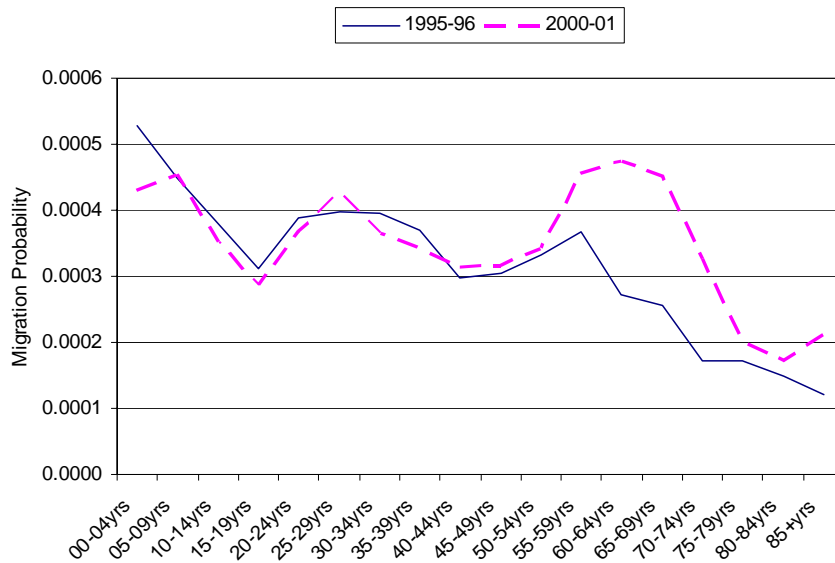
### Migration Probabilities, Moreton SD to Rest of Queensland, 1995-96 and 2000-01



Source: Australian Bureau of Statistics, 1996 and 2001 Censuses of Population and Housing, unpublished migration data.

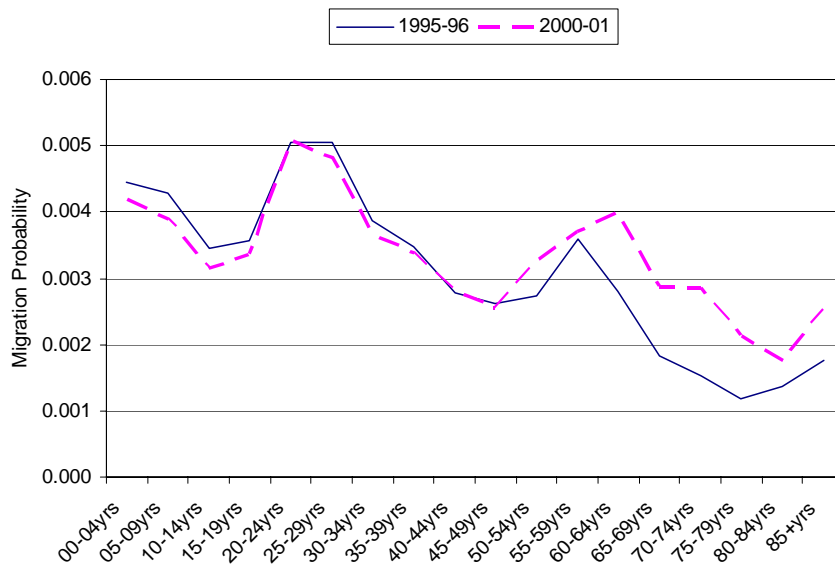
## Wide Bay-Burnett Statistical Division

### Migration Probabilities, Rest of Australia to Wide Bay-Burnett SD, 1995-96 and 2000-01



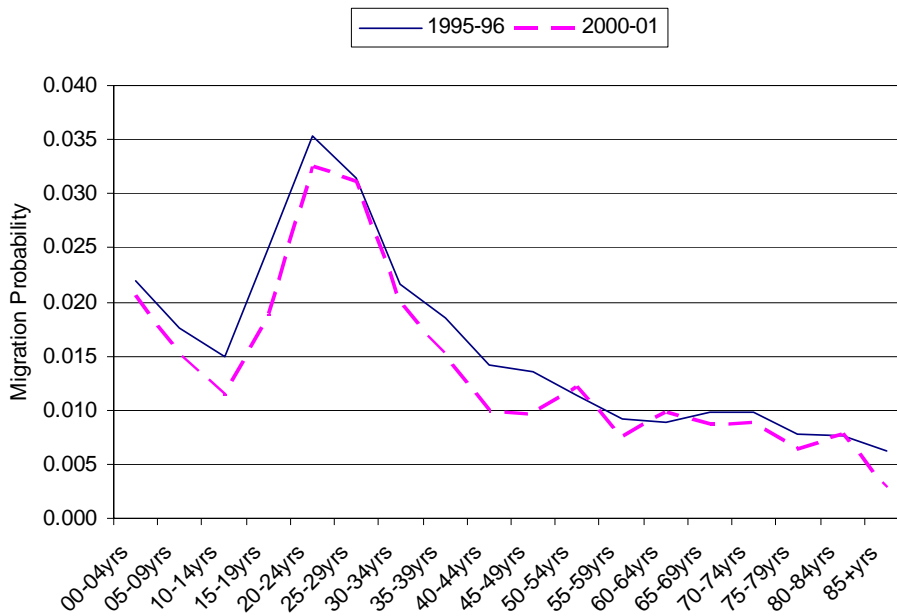
Source: Australian Bureau of Statistics, 1996 and 2001 Censuses of Population and Housing, unpublished migration data.

### Migration Probabilities, Rest of Queensland to Wide Bay-Burnett SD, 1995-96 and 2000-01



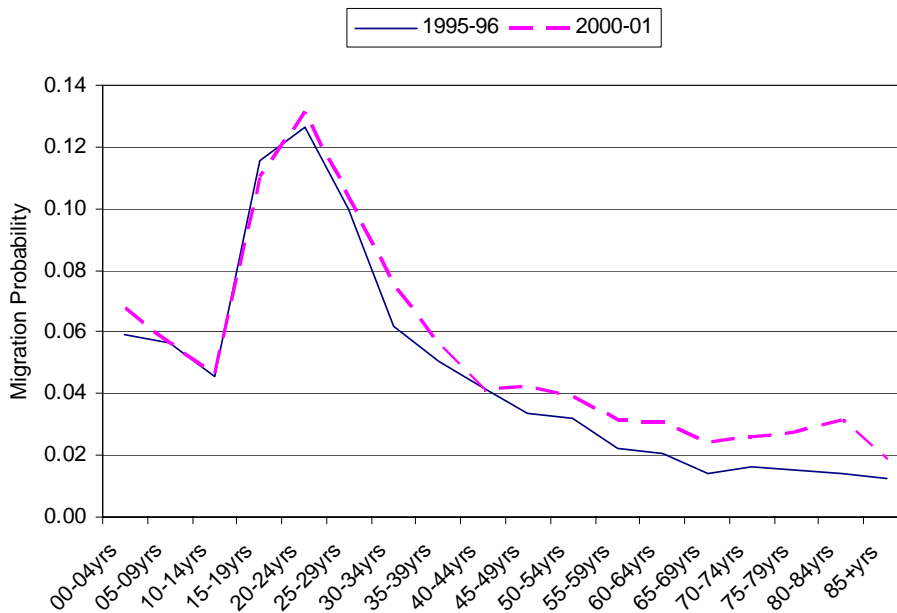
Source: Australian Bureau of Statistics, 1996 and 2001 Censuses of Population and Housing, unpublished migration data.

### Migration Probabilities, Wide Bay-Burnett SD to Rest of Australia, 1995-96 and 2000-01



Source: Australian Bureau of Statistics, 1996 and 2001 Censuses of Population and Housing, unpublished migration data.

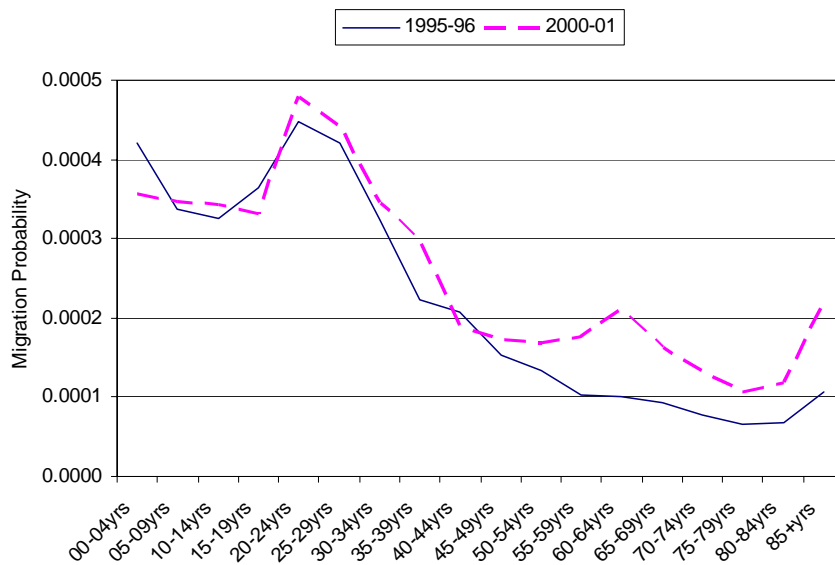
### Migration Probabilities, Wide Bay-Burnett SD to Rest of Queensland, 1995-96 and 2000-01



Source: Australian Bureau of Statistics, 1996 and 2001 Censuses of Population and Housing, unpublished migration data.

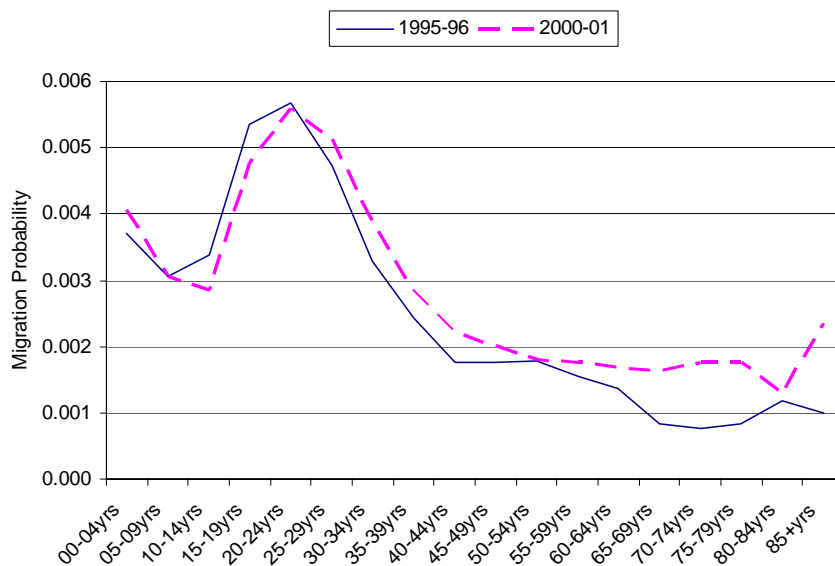
## Darling Downs Statistical Division

### Migration Probabilities, Rest of Australia to Darling Downs SD, 1995-96 and 2000-01



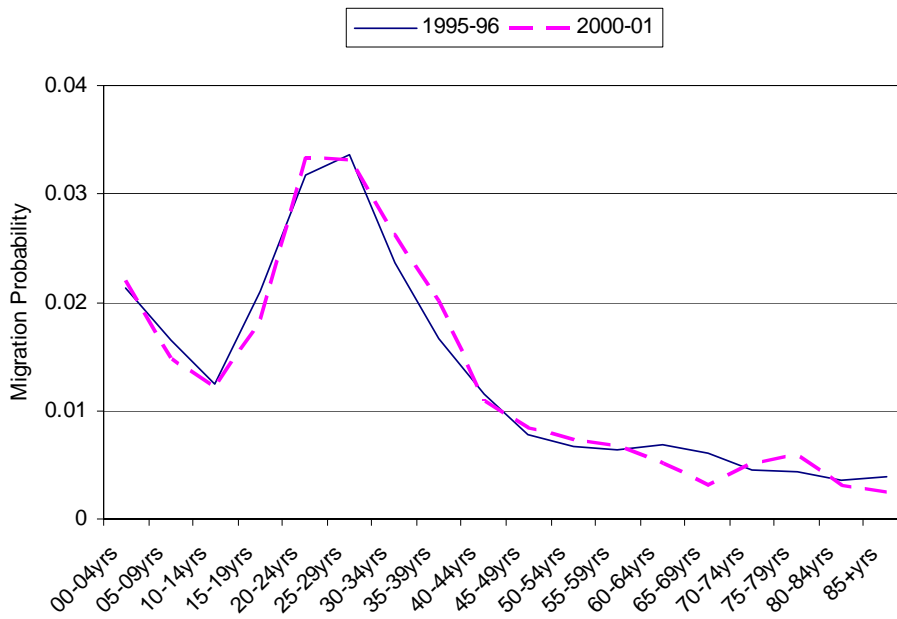
Source: Australian Bureau of Statistics, 1996 and 2001 Censuses of Population and Housing, unpublished migration data.

### Migration Probabilities, Rest of Queensland to Darling Downs SD, 1995-96 and 2000-01



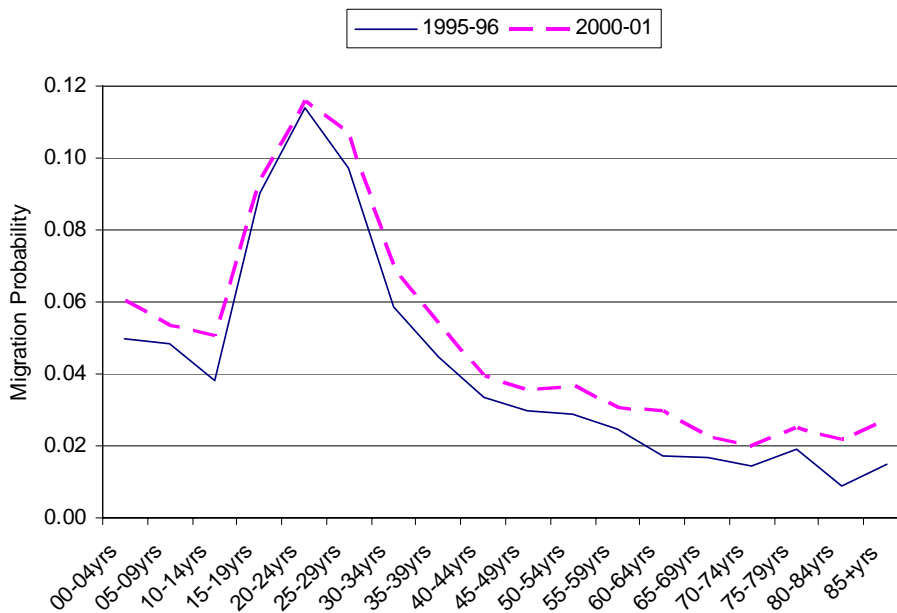
Source: Australian Bureau of Statistics, 1996 and 2001 Censuses of Population and Housing, unpublished migration data.

### Migration Probabilities, Darling Downs SD to Rest of Australia, 1995-96 and 2000-01



Source: Australian Bureau of Statistics, 1996 and 2001 Censuses of Population and Housing, unpublished migration data.

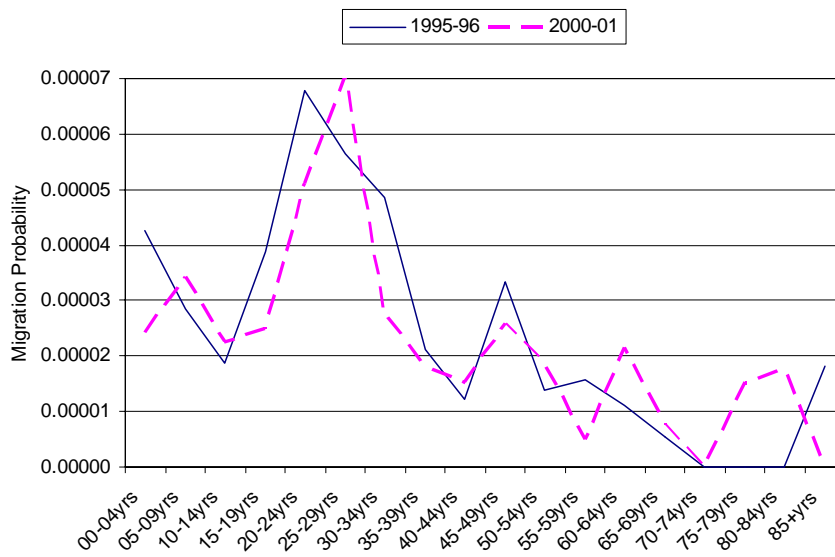
### Migration Probabilities, Darling Downs SD to Rest of Queensland, 1995-96 and 2000-01



Source: Australian Bureau of Statistics, 1996 and 2001 Censuses of Population and Housing, unpublished migration data.

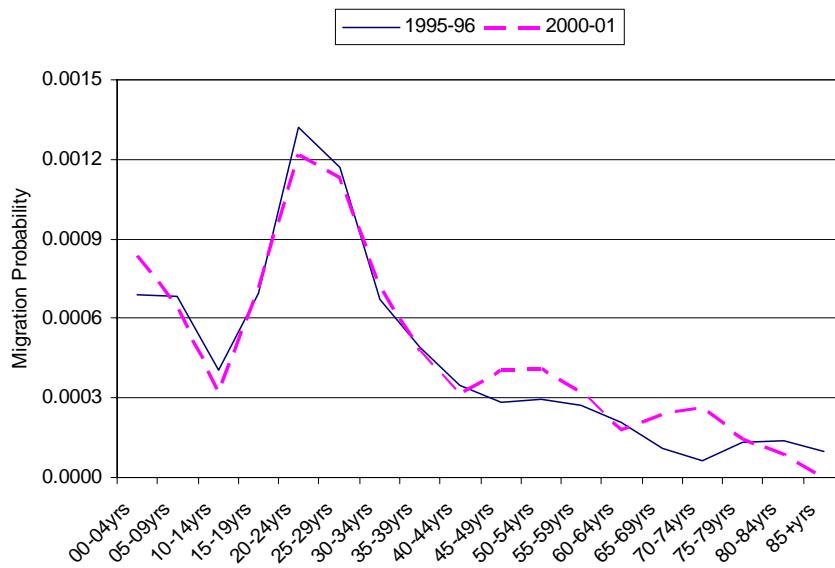
## South West Statistical Division

### Migration Probabilities, Rest of Australia to South West SD, 1995-96 and 2000-01



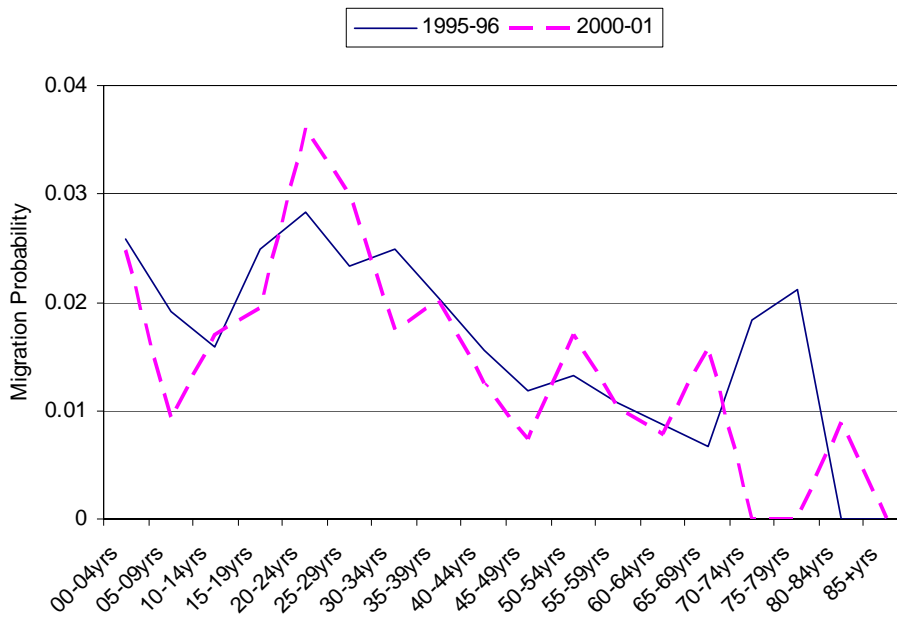
Source: Australian Bureau of Statistics, 1996 and 2001 Censuses of Population and Housing, unpublished migration data.

### Migration Probabilities, Rest of Queensland to South West SD, 1995-96 and 2000-01



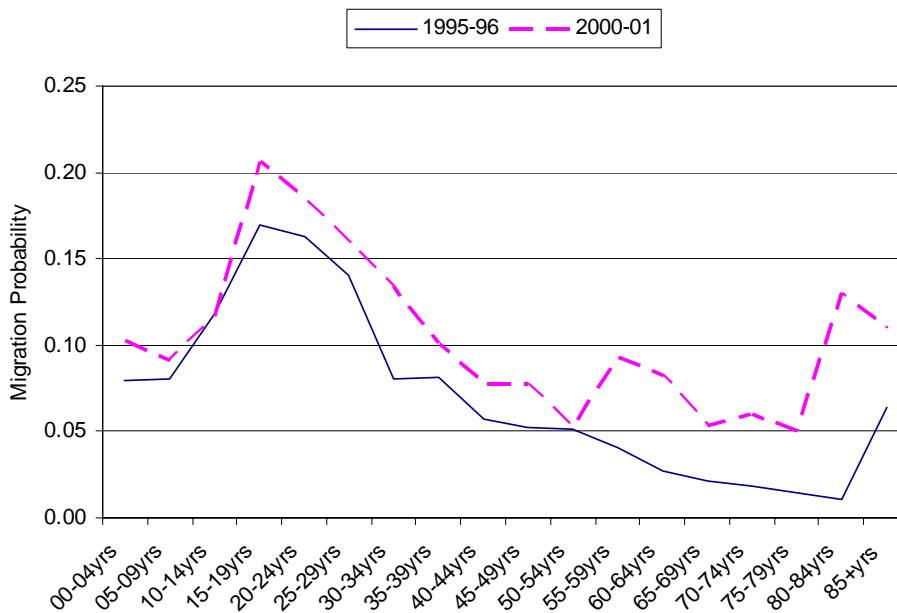
Source: Australian Bureau of Statistics, 1996 and 2001 Censuses of Population and Housing, unpublished migration data.

### Migration Probabilities, South West SD to Rest of Australia, 1995-96 and 2000-01



Source: Australian Bureau of Statistics, 1996 and 2001 Censuses of Population and Housing, unpublished migration data.

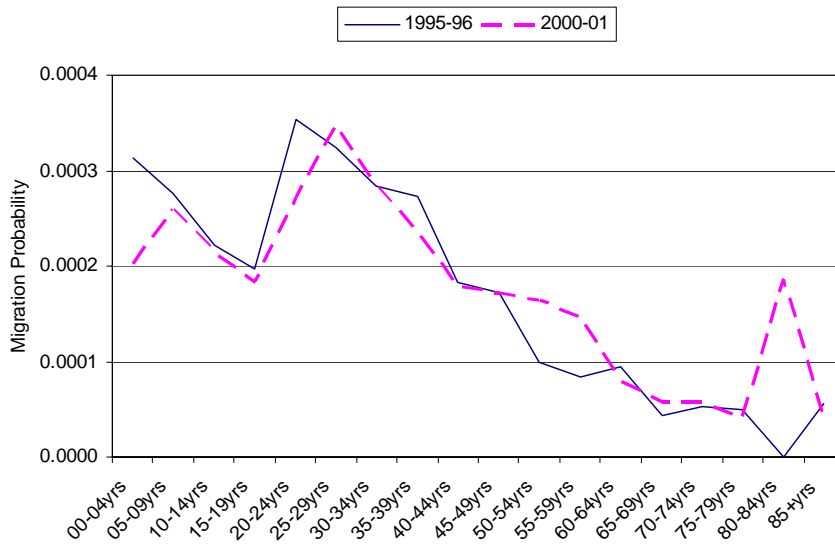
### Migration Probabilities, South West SD to Rest of Queensland, 1995-96 and 2000-01



Source: Australian Bureau of Statistics, 1996 and 2001 Censuses of Population and Housing, unpublished migration data.

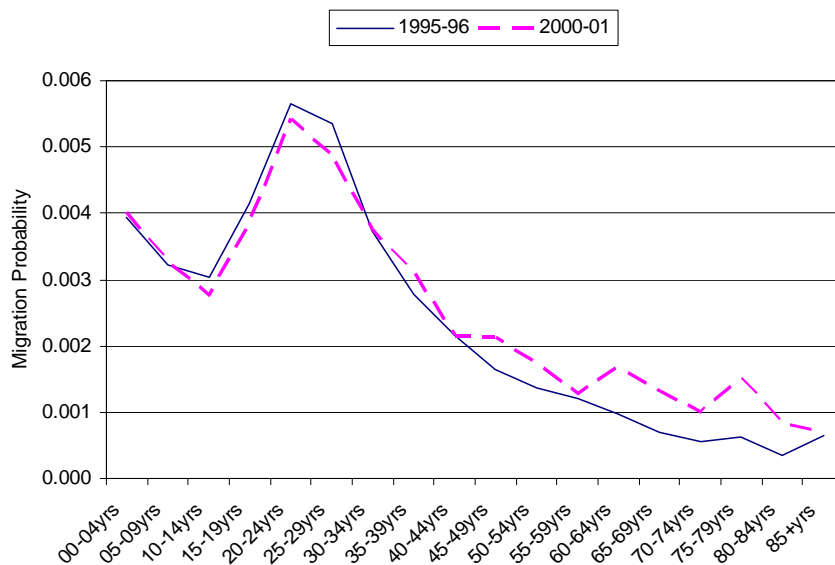
## Fitzroy Statistical Division

### Migration Probabilities, Rest of Australia to Fitzroy SD, 1995-96 and 2000-01



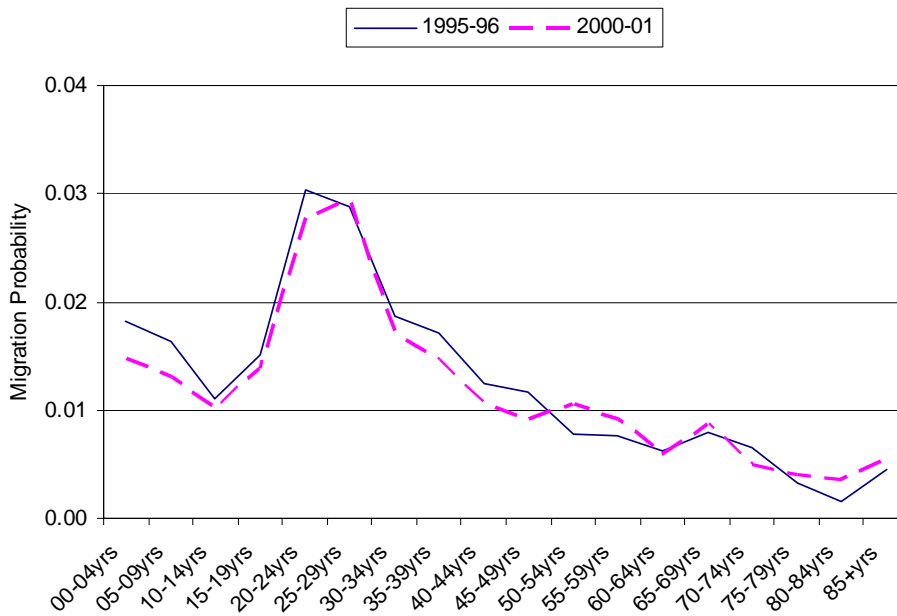
Source: Australian Bureau of Statistics, 1996 and 2001 Censuses of Population and Housing, unpublished migration data.

### Migration Probabilities, Rest of Queensland to Fitzroy SD, 1995-96 and 2000-01



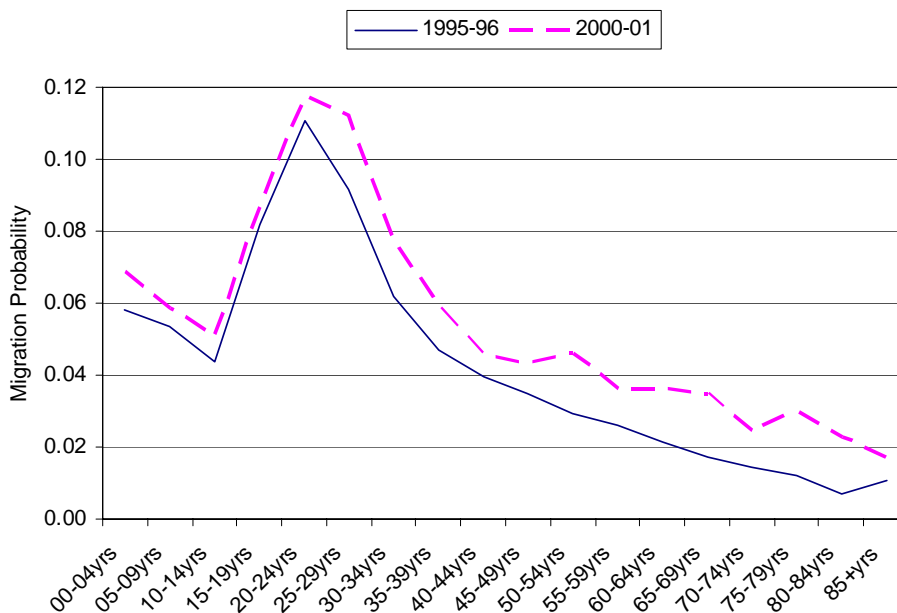
Source: Australian Bureau of Statistics, 1996 and 2001 Censuses of Population and Housing, unpublished migration data.

### Migration Probabilities, Fitzroy SD to Rest of Australia, 1995-96 and 2000-01



Source: Australian Bureau of Statistics, 1996 and 2001 Censuses of Population and Housing, unpublished migration data.

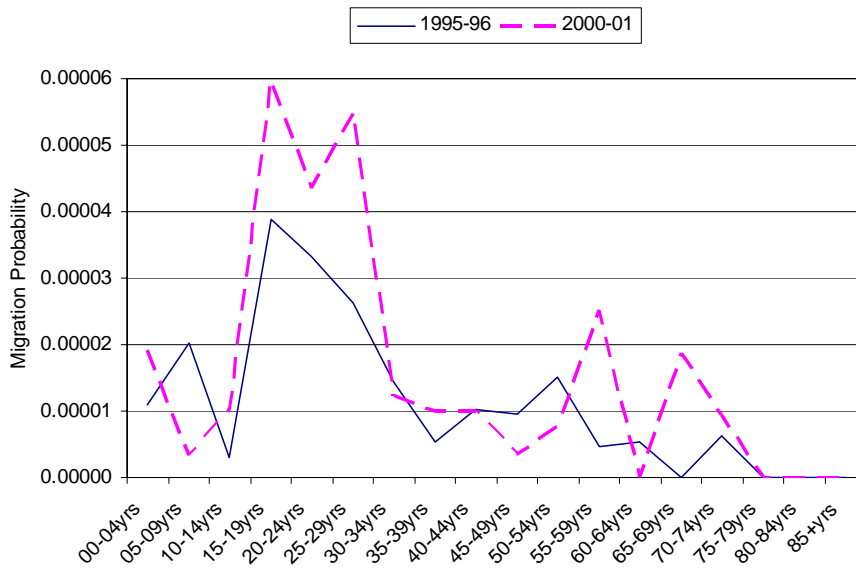
### Migration Probabilities, Fitzroy SD to Rest of Queensland, 1995-96 and 2000-01



Source: Australian Bureau of Statistics, 1996 and 2001 Censuses of Population and Housing, unpublished migration data.

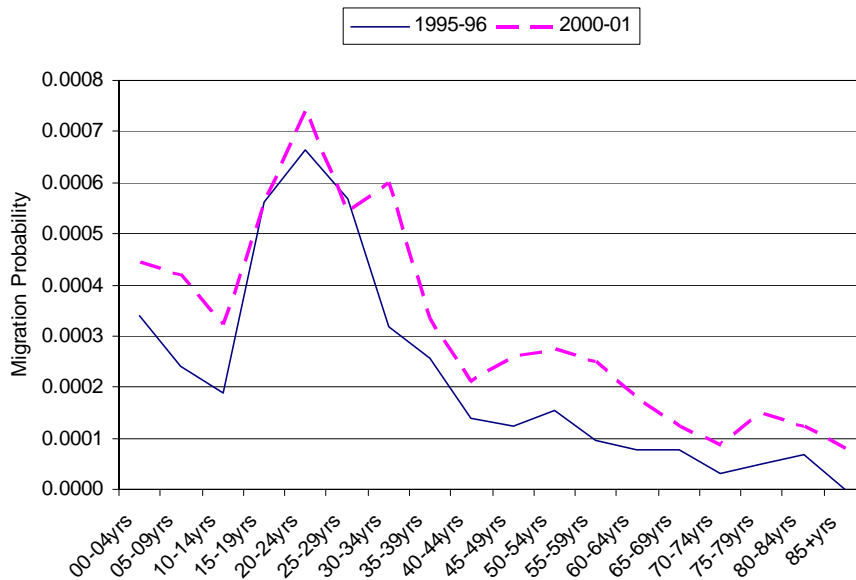
## Central West Statistical Division

### Migration Probabilities, Rest of Australia to Central West SD, 1995-96 and 2000-01



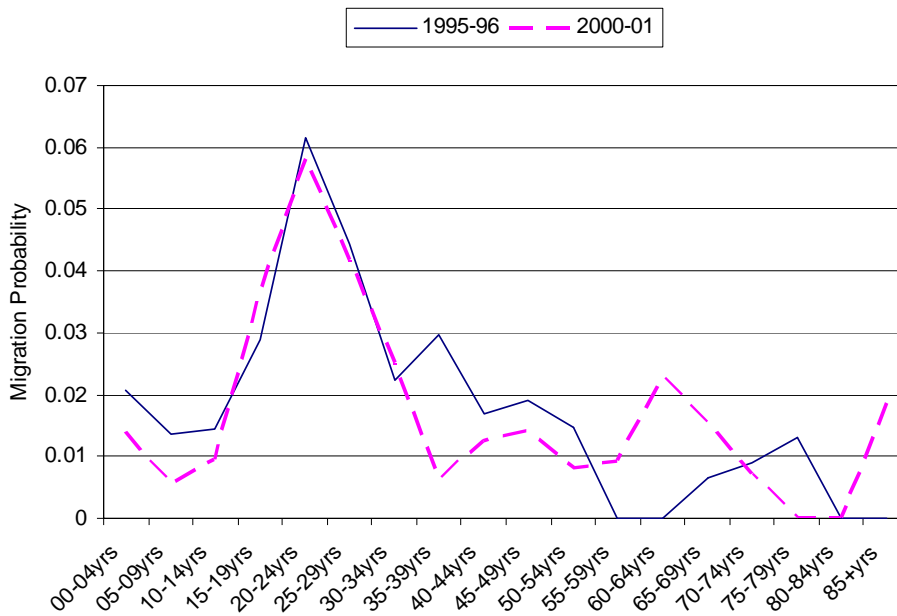
Source: Australian Bureau of Statistics, 1996 and 2001 Censuses of Population and Housing, unpublished migration data.

### Migration Probabilities, Rest of Queensland to Central West SD, 1995-96 and 2000-01



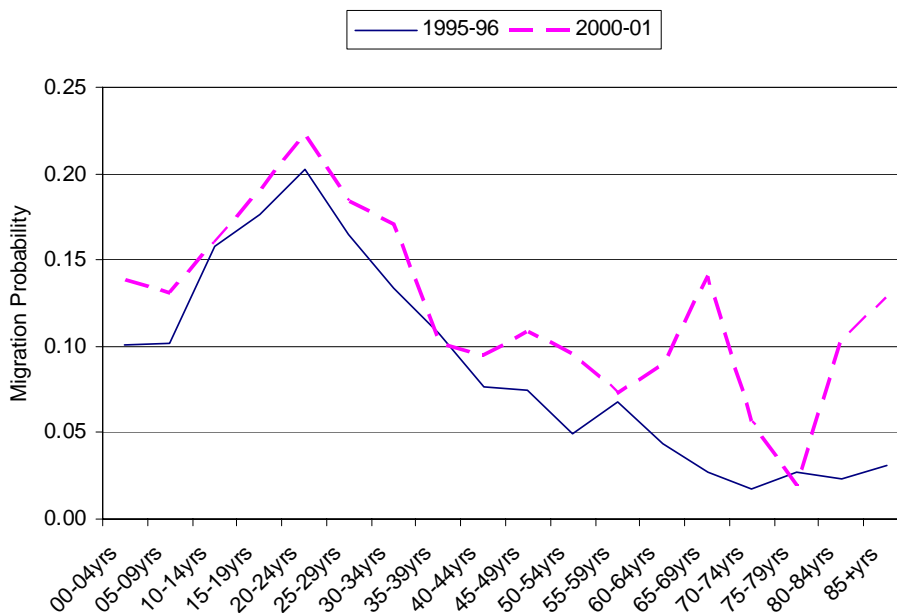
Source: Australian Bureau of Statistics, 1996 and 2001 Censuses of Population and Housing, unpublished migration data.

### Migration Probabilities, Central West SD to Rest of Australia, 1995-96 and 2000-01



Source: Australian Bureau of Statistics, 1996 and 2001 Censuses of Population and Housing, unpublished migration data.

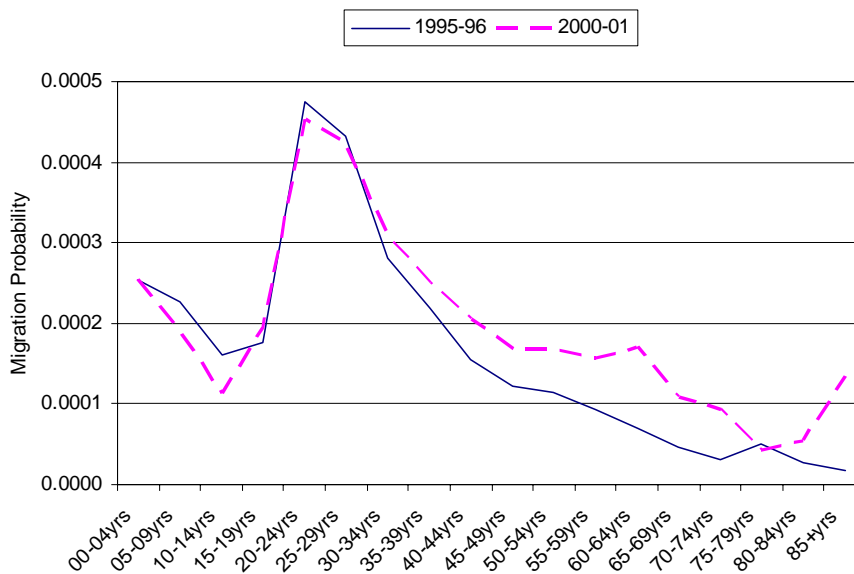
### Migration Probabilities, Central West SD to Rest of Queensland, 1995-96 and 2000-01



Source: Australian Bureau of Statistics, 1996 and 2001 Censuses of Population and Housing, unpublished migration data.

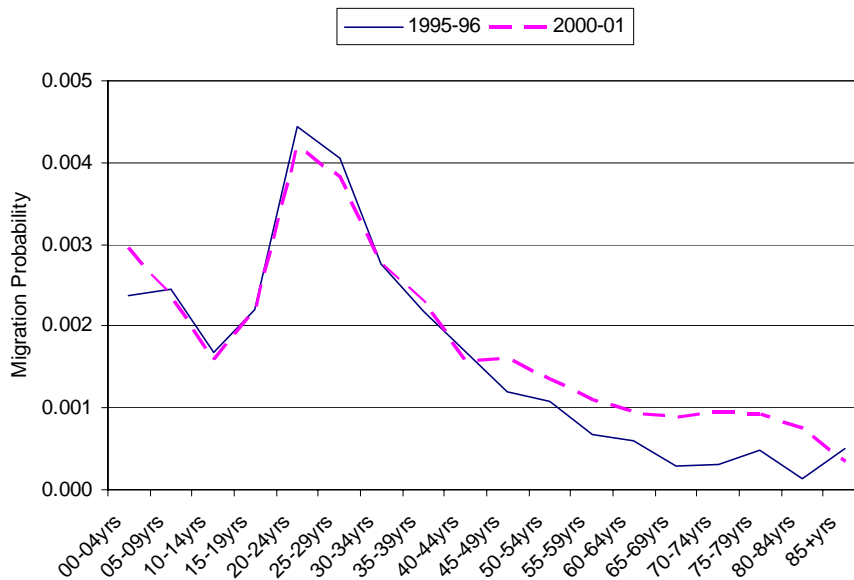
## Mackay Statistical Division

### Migration Probabilities, Rest of Australia to Mackay SD, 1995-96 and 2000-01



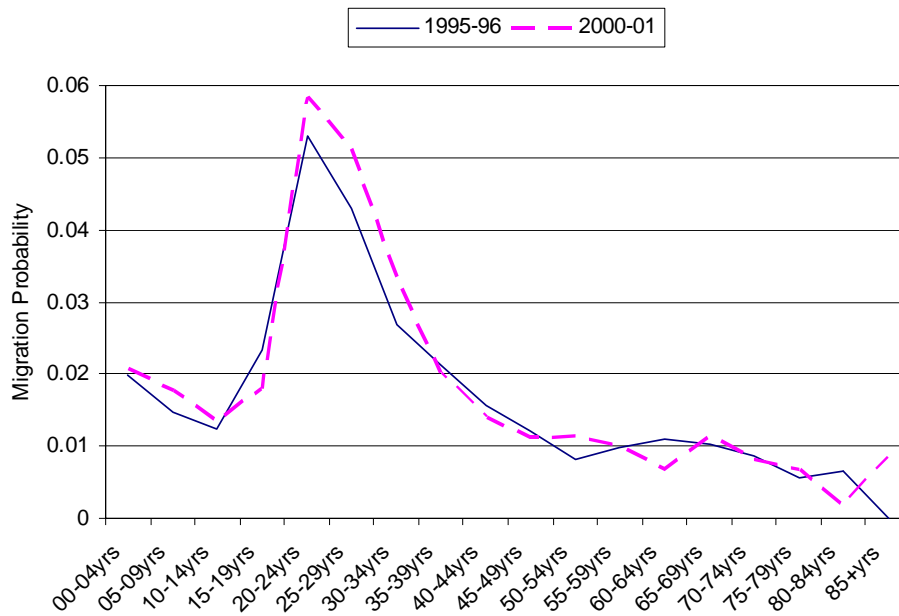
Source: Australian Bureau of Statistics, 1996 and 2001 Censuses of Population and Housing, unpublished migration data.

### Migration Probabilities, Rest of Queensland to Mackay SD, 1995-96 and 2000-01



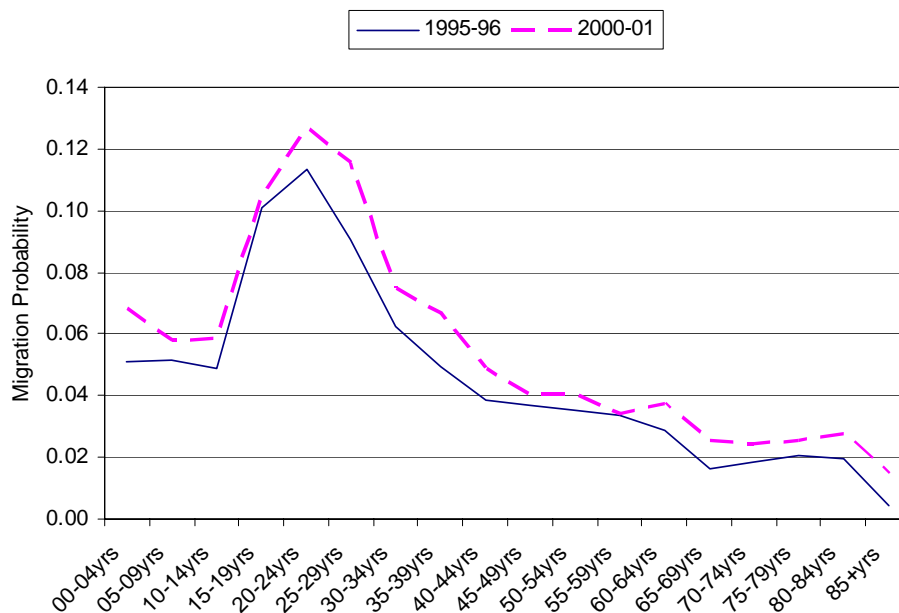
Source: Australian Bureau of Statistics, 1996 and 2001 Censuses of Population and Housing, unpublished migration data.

### Migration Probabilities, Mackay SD to Rest of Australia, 1995-96 and 2000-01



Source: Australian Bureau of Statistics, 1996 and 2001 Censuses of Population and Housing, unpublished migration data.

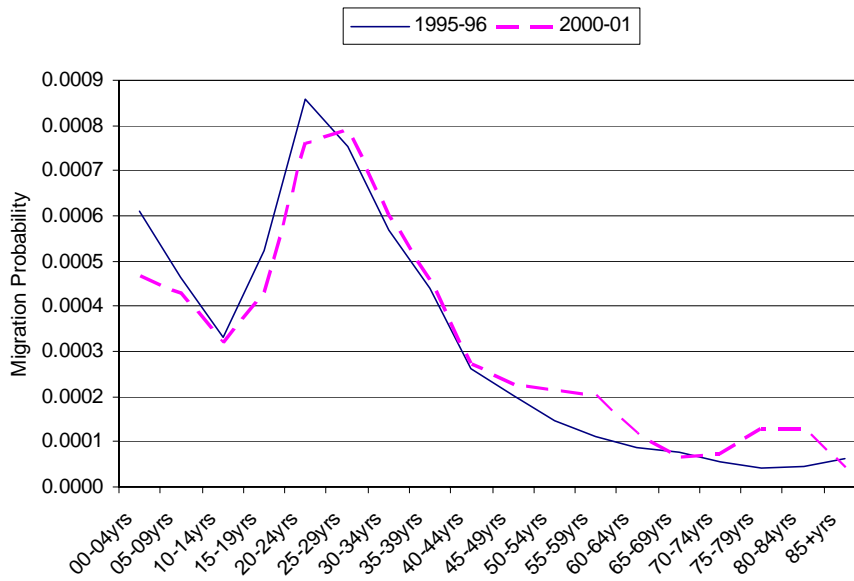
### Migration Probabilities, Mackay SD to Rest of Queensland, 1995-96 and 2000-01



Source: Australian Bureau of Statistics, 1996 and 2001 Censuses of Population and Housing, unpublished migration data.

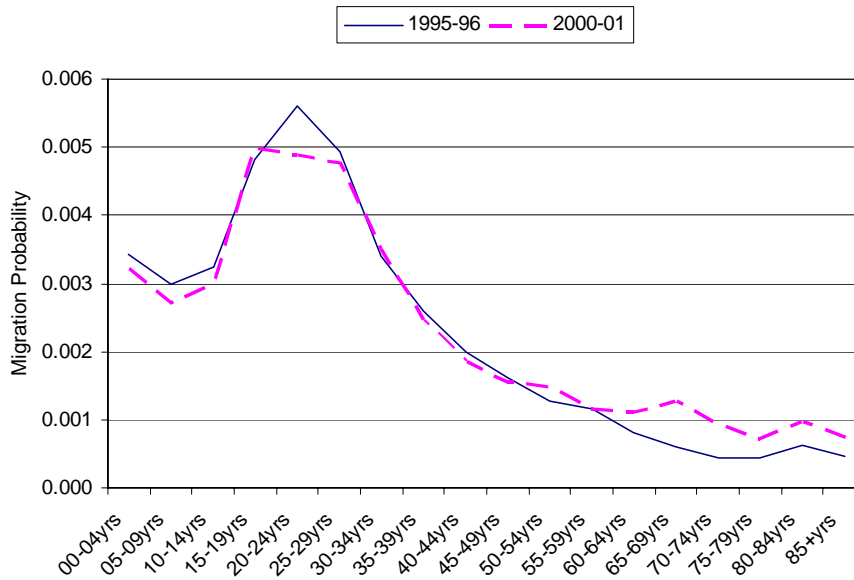
## Northern Statistical Division

### Migration Probabilities, Rest of Australia to Northern SD, 1995-96 and 2000-01



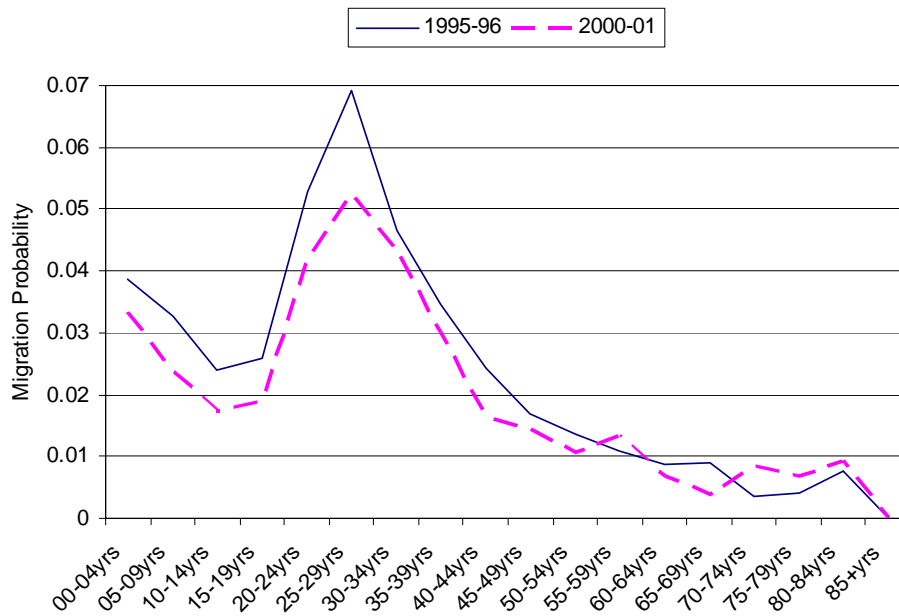
Source: Australian Bureau of Statistics, 1996 and 2001 Censuses of Population and Housing, unpublished migration data.

### Migration Probabilities, Rest of Queensland to Northern SD, 1995-96 and 2000-01



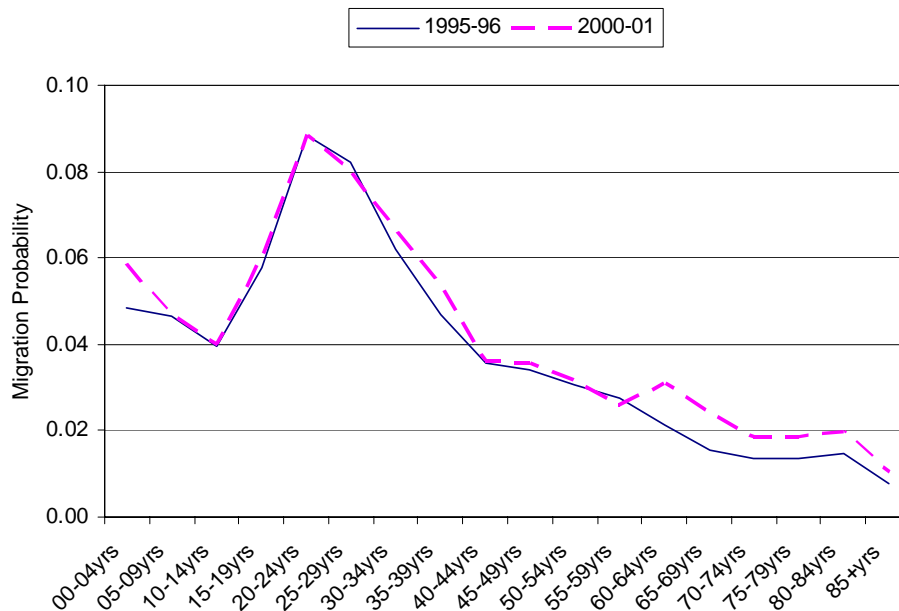
Source: Australian Bureau of Statistics, 1996 and 2001 Censuses of Population and Housing, unpublished migration data.

### Migration Probabilities, Northern SD to Rest of Australia, 1995-96 and 2000-01



Source: Australian Bureau of Statistics, 1996 and 2001 Censuses of Population and Housing, unpublished migration data.

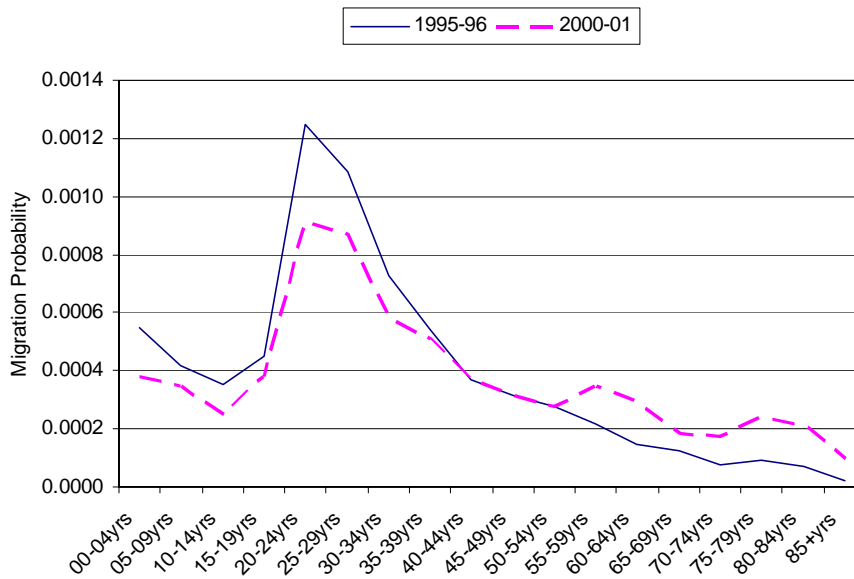
### Migration Probabilities, Northern SD to Rest of Queensland, 1995-96 and 2000-01



Source: Australian Bureau of Statistics, 1996 and 2001 Censuses of Population and Housing, unpublished migration data.

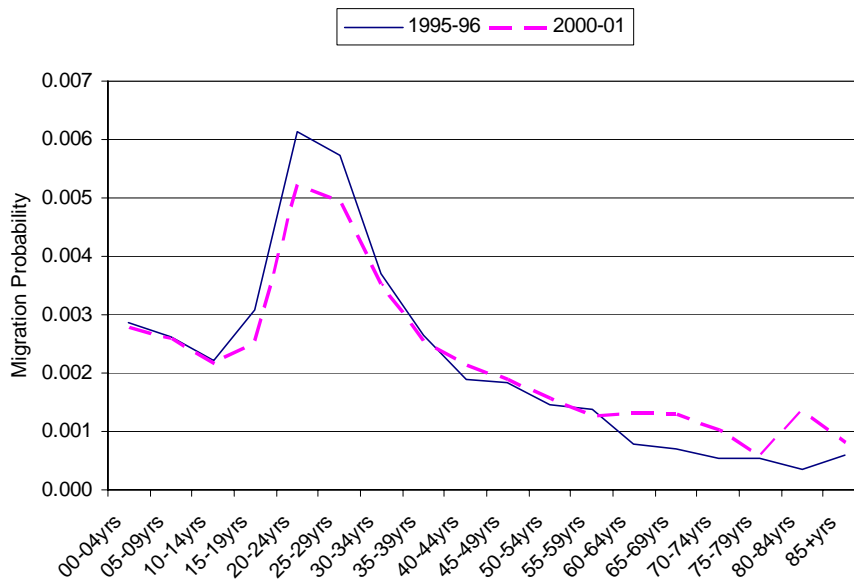
## Far North Statistical Division

### Migration Probabilities, Rest of Australia to Far North SD, 1995-96 and 2000-01



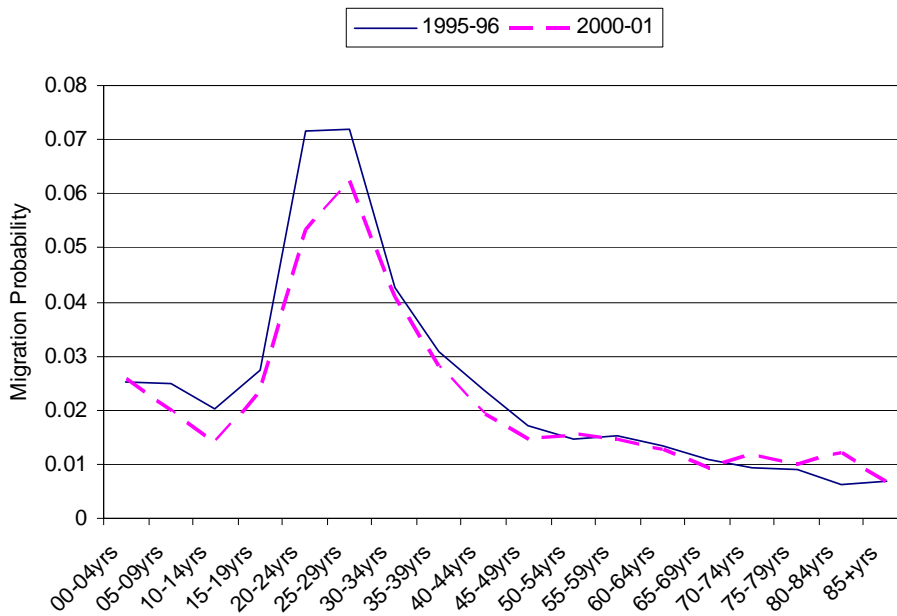
Source: Australian Bureau of Statistics, 1996 and 2001 Censuses of Population and Housing, unpublished migration data.

### Migration Probabilities, Rest of Queensland to Far North SD, 1995-96 and 2000-01



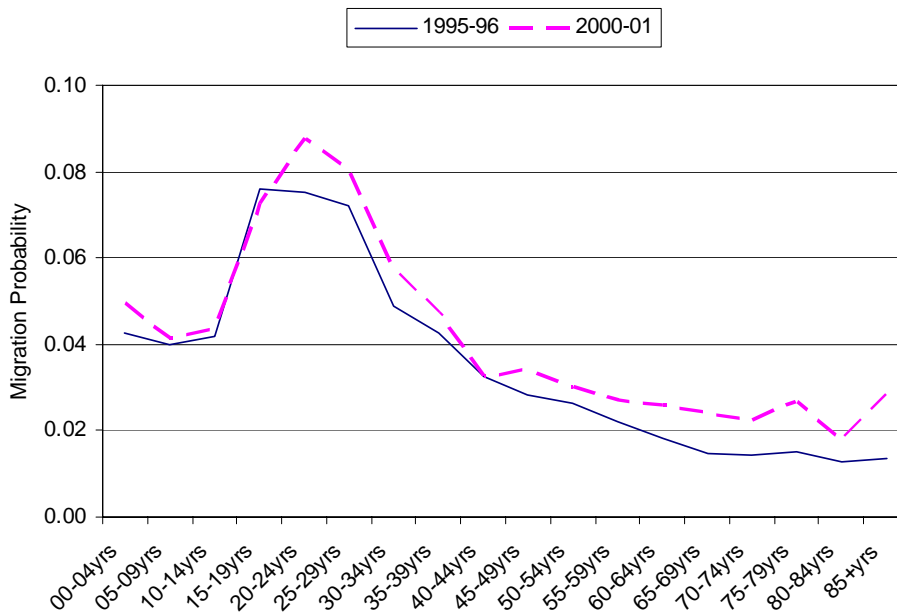
Source: Australian Bureau of Statistics, 1996 and 2001 Censuses of Population and Housing, unpublished migration data.

### Migration Probabilities, Far North SD to Rest of Australia, 1995-96 and 2000-01



Source: Australian Bureau of Statistics, 1996 and 2001 Censuses of Population and Housing, unpublished migration data.

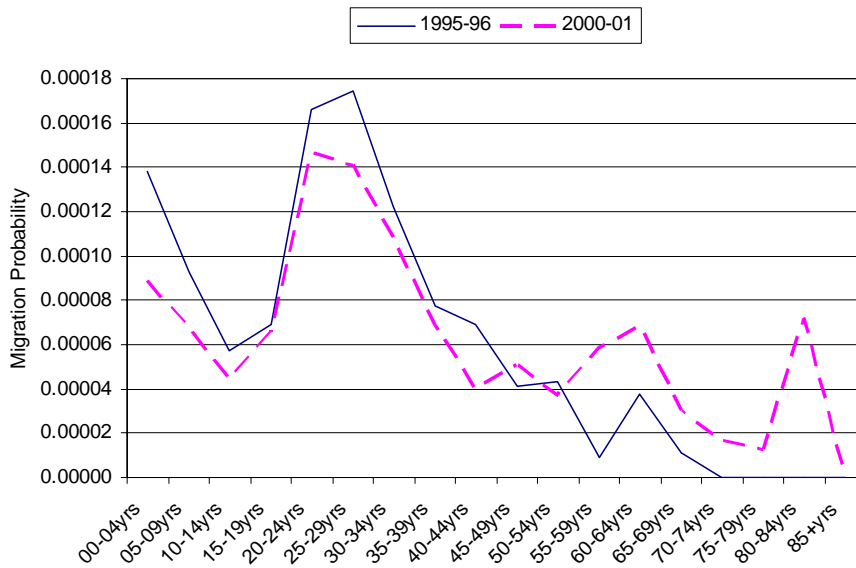
### Migration Probabilities, Far North SD to Rest of Queensland, 1995-96 and 2000-01



Source: Australian Bureau of Statistics, 1996 and 2001 Censuses of Population and Housing, unpublished migration data.

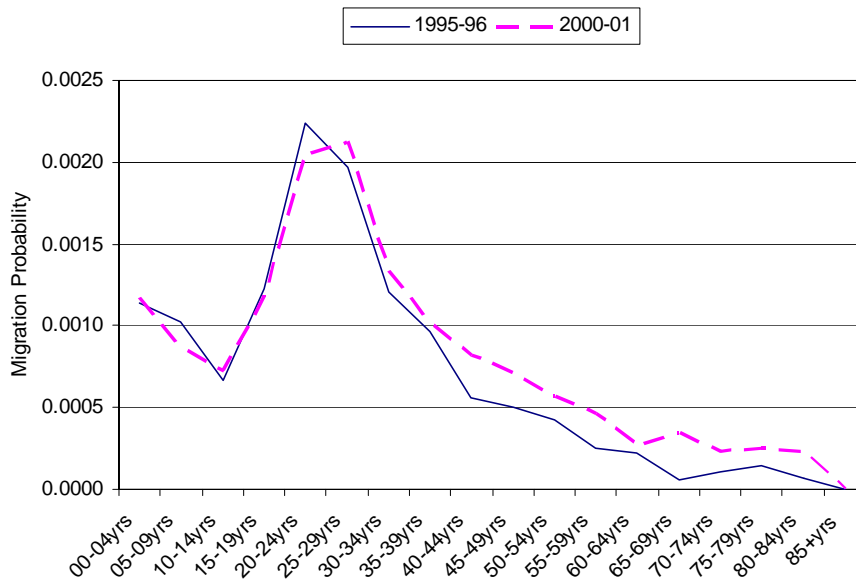
## North West Statistical Division

### Migration Probabilities, Rest of Australia to North West SD, 1995-96 and 2000-01



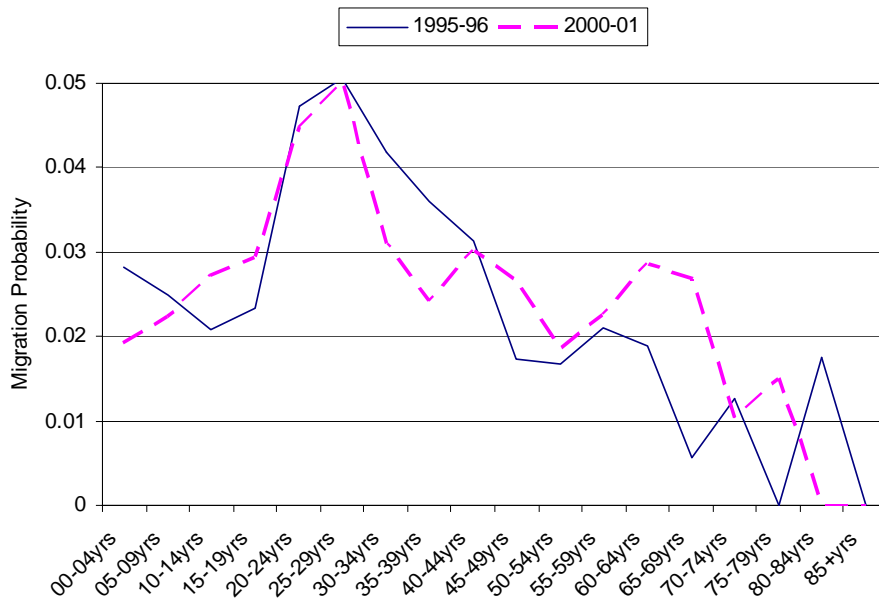
Source: Australian Bureau of Statistics, 1996 and 2001 Censuses of Population and Housing, unpublished migration data.

### Migration Probabilities, Rest of Queensland to North West SD, 1995-96 and 2000-01



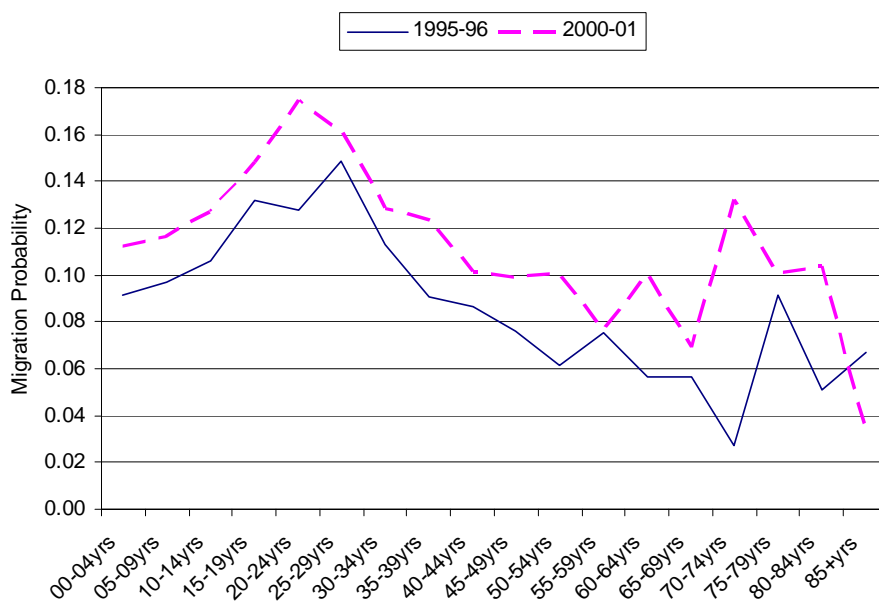
Source: Australian Bureau of Statistics, 1996 and 2001 Censuses of Population and Housing, unpublished migration data.

### Migration Probabilities, North West SD to Rest of Australia, 1995-96 and 2000-01



Source: Australian Bureau of Statistics, 1996 and 2001 Censuses of Population and Housing, unpublished migration data.

### Migration Probabilities, North West SD to Rest of Queensland, 1995-96 and 2000-01



Source: Australian Bureau of Statistics, 1996 and 2001 Censuses of Population and Housing, unpublished migration data.