



Department of Infrastructure and Planning

Population and residential development trends in the Rockhampton region

Ross Barker and Alison Taylor

Rockhampton regional seminar, 2nd September 2009





Outline

Recent population trends - Ross

- National and state level trends
- Regional patterns of growth
- Local population change

Future population and demographic challenges - Alison

- Projected population
- Changing age structure
- Future household types and living arrangements

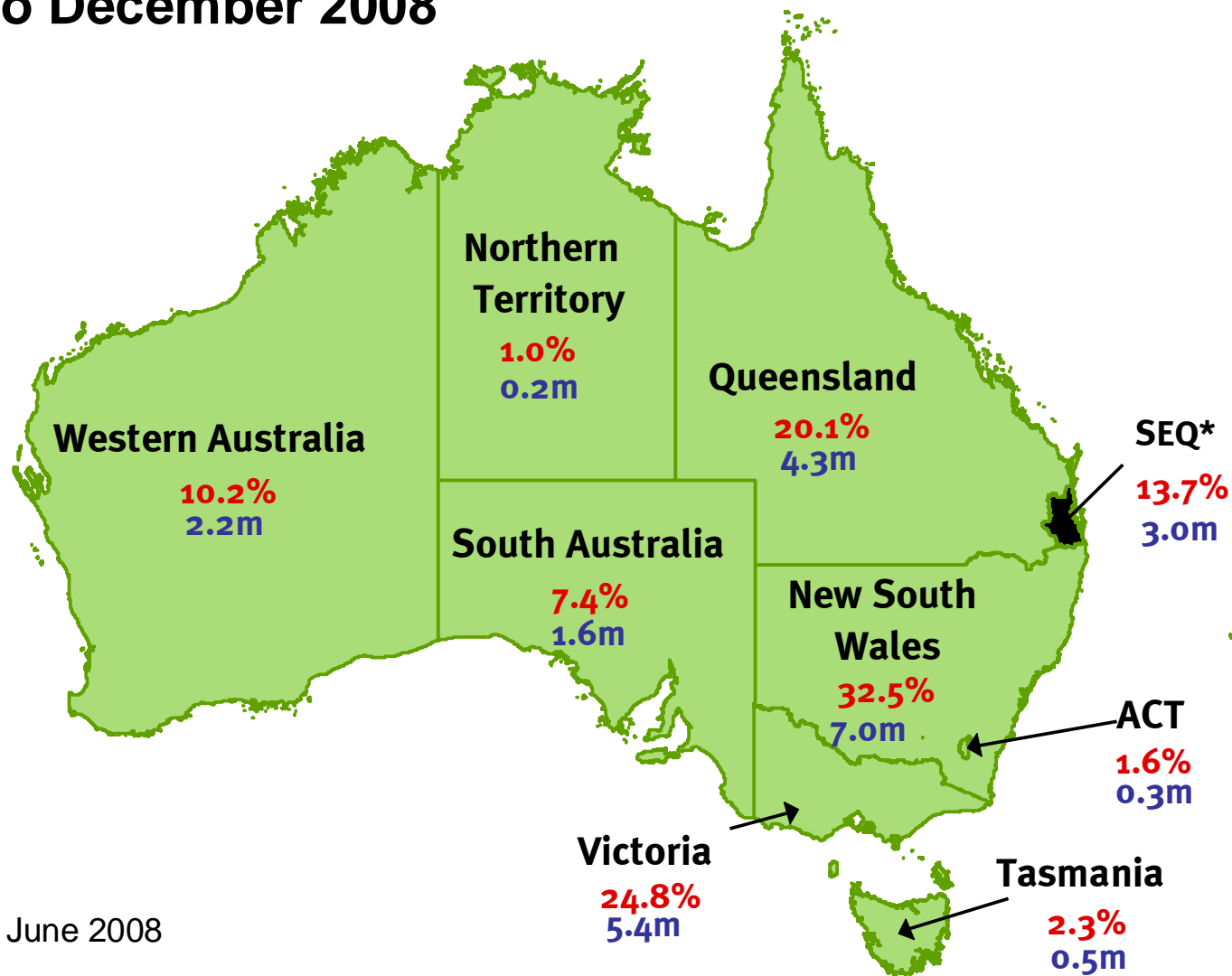
12.50 Light lunch

Residential activity trends - Ross

Guest speaker – Mayor Brad Carter, Rockhampton Regional Council

2.30 Close

Proportion of Australia's Population, by state and territory, Year to December 2008

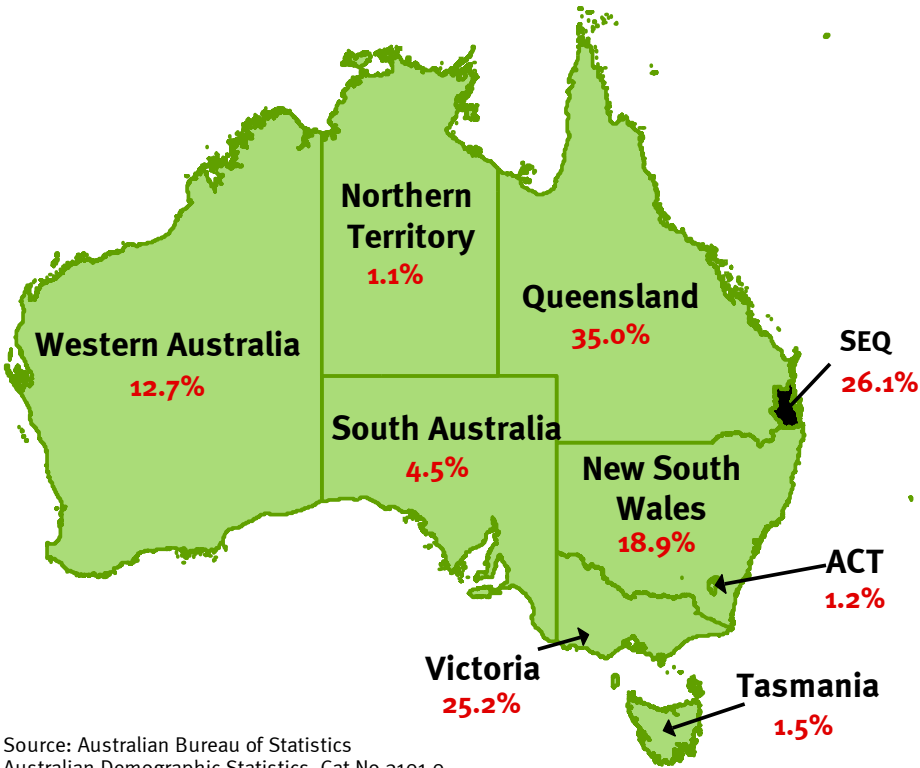


*SEQ at June 2008

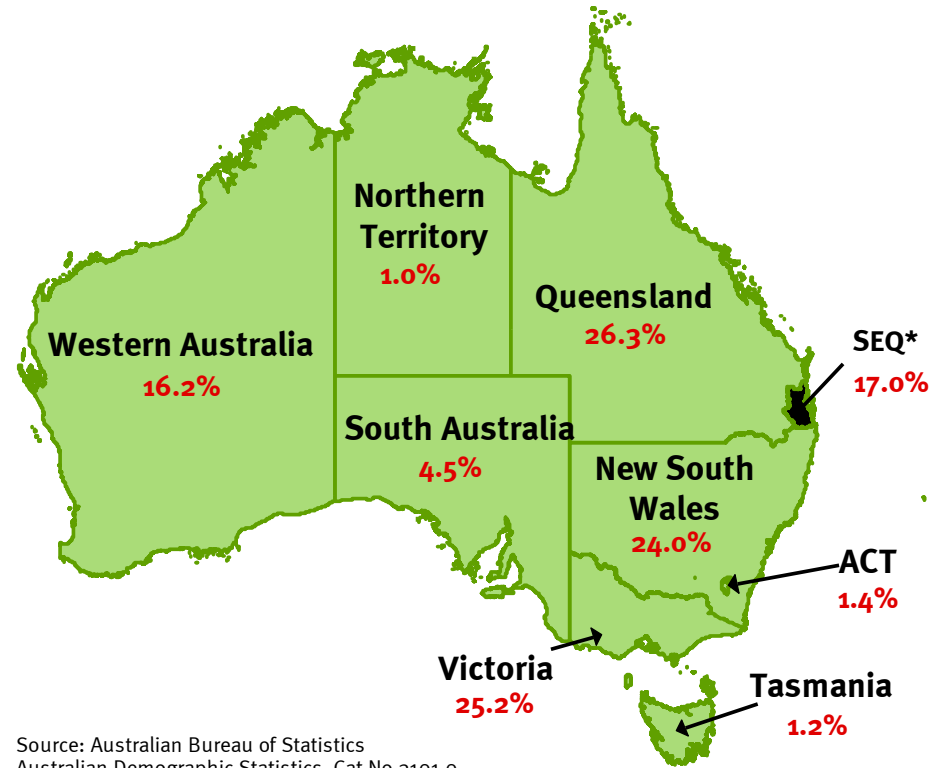
Source: ABS CAT No 3101.0

Rapid population growth

2001-2006



2008



Source: Australian Bureau of Statistics
Australian Demographic Statistics, Cat No 3101.0

QLD average 92k

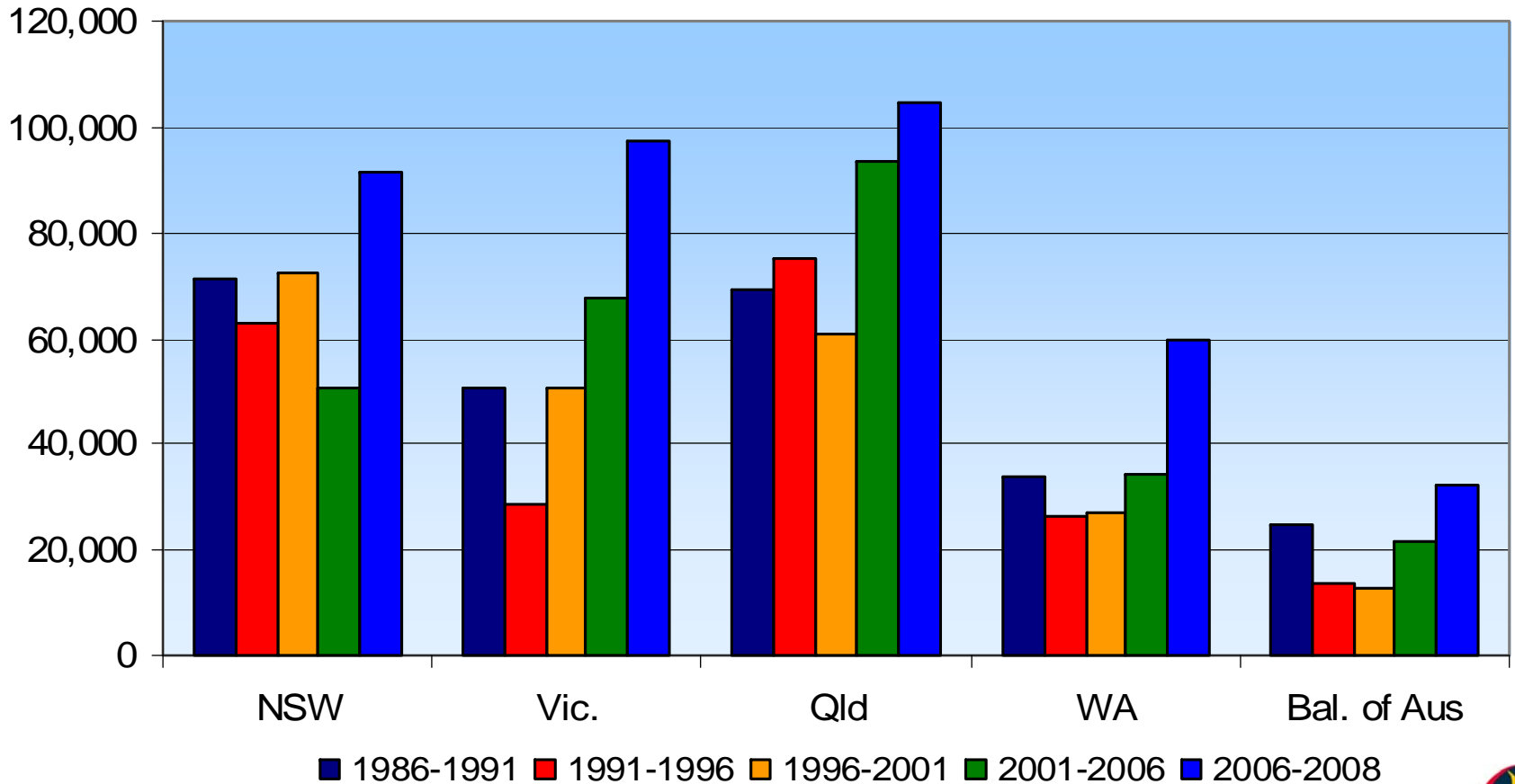
*SEQ at June 2008

Source: Australian Bureau of Statistics
Australian Demographic Statistics, Cat No 3101.0

QLD average 107k

Source: ABS CAT No 3101.0

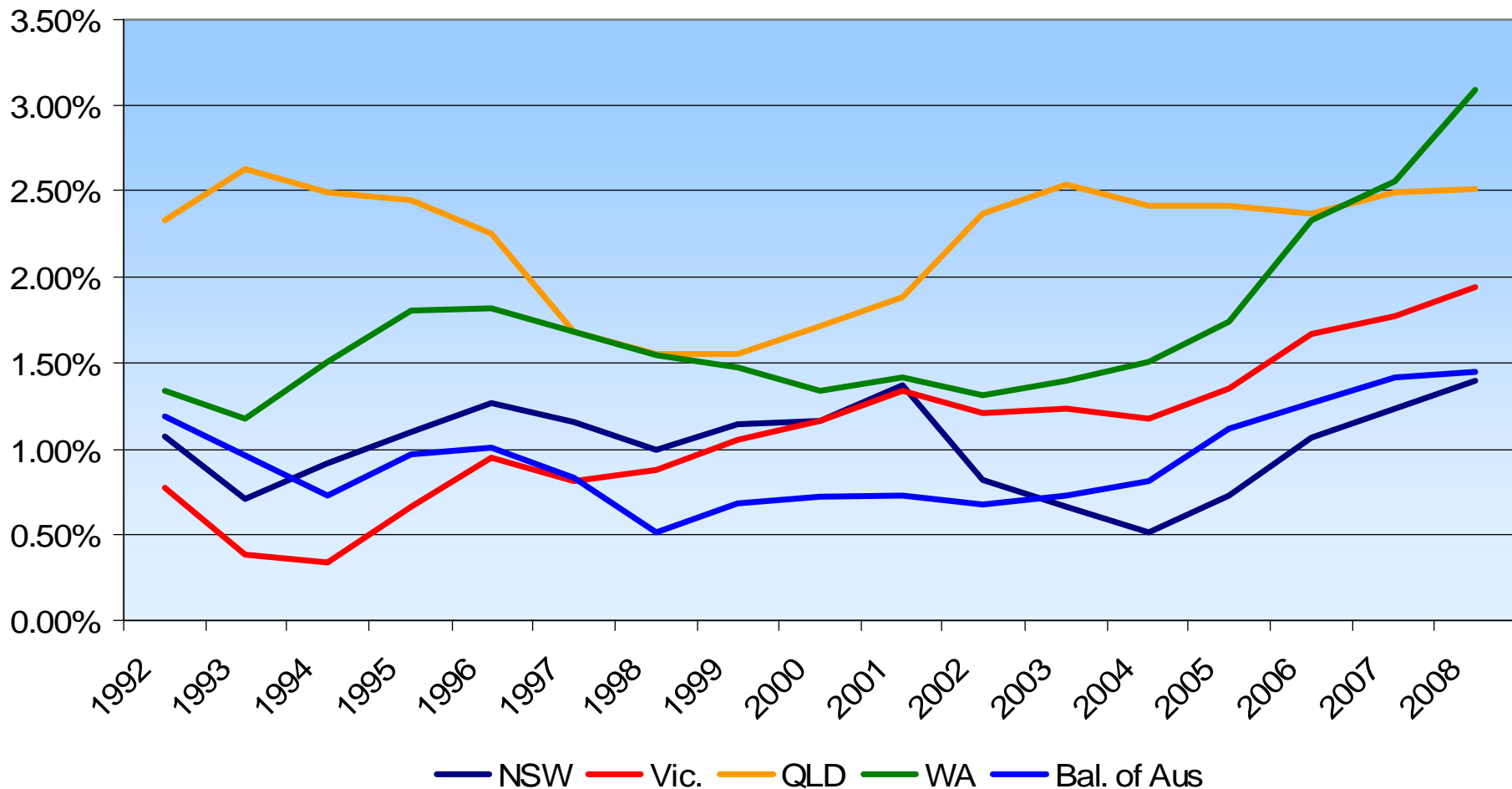
Queensland – grows more than NSW or Victoria - annual average years ending December



Source: ABS, Australian Demographic Statistics,
Cat. No. 3105.0 and 3101.0

Australia's Fastest Growing State - Almost

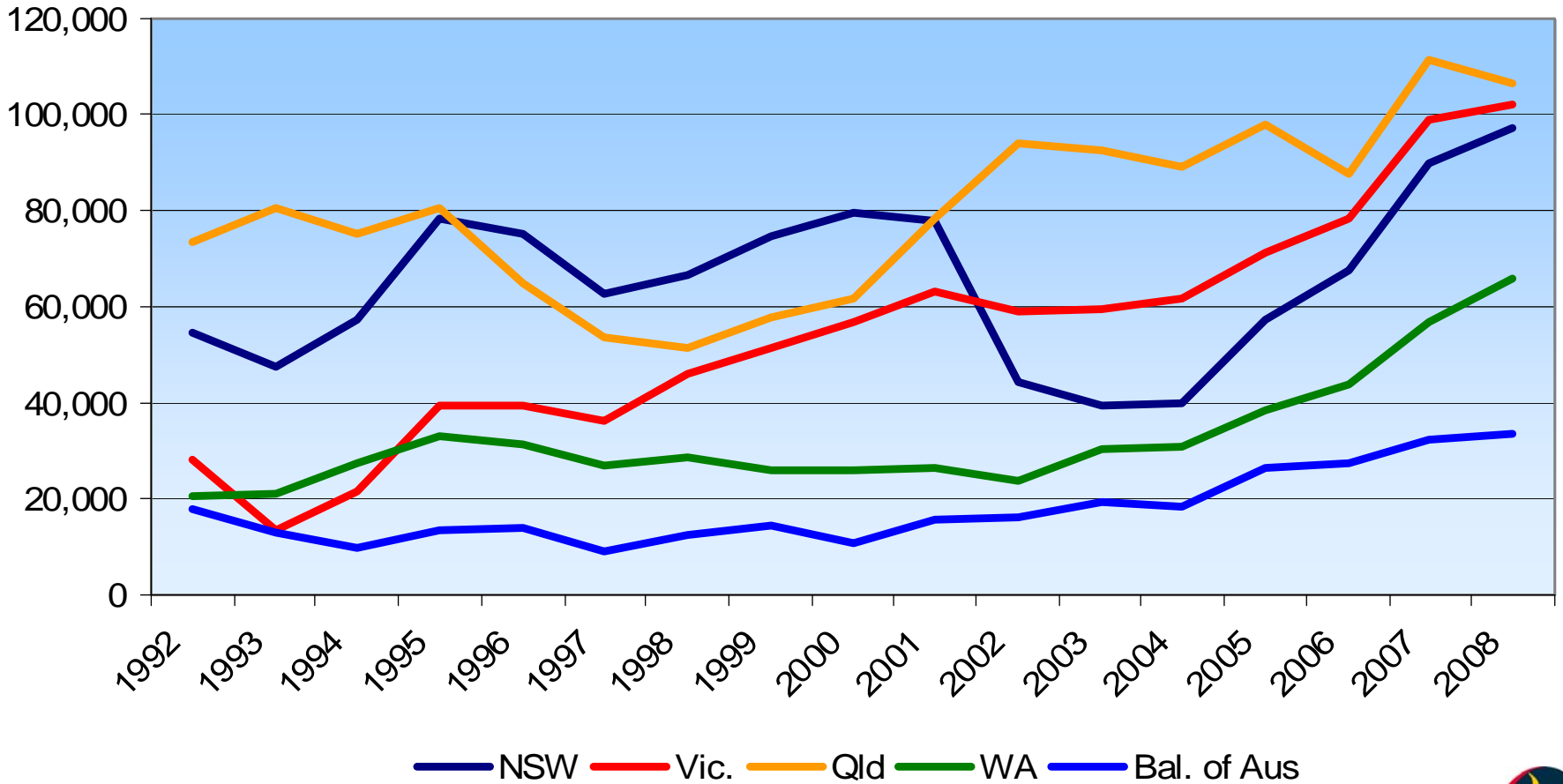
year ending December 2008



Source: ABS Cat. No. 3101.0

Australia's Largest Growing State - Just

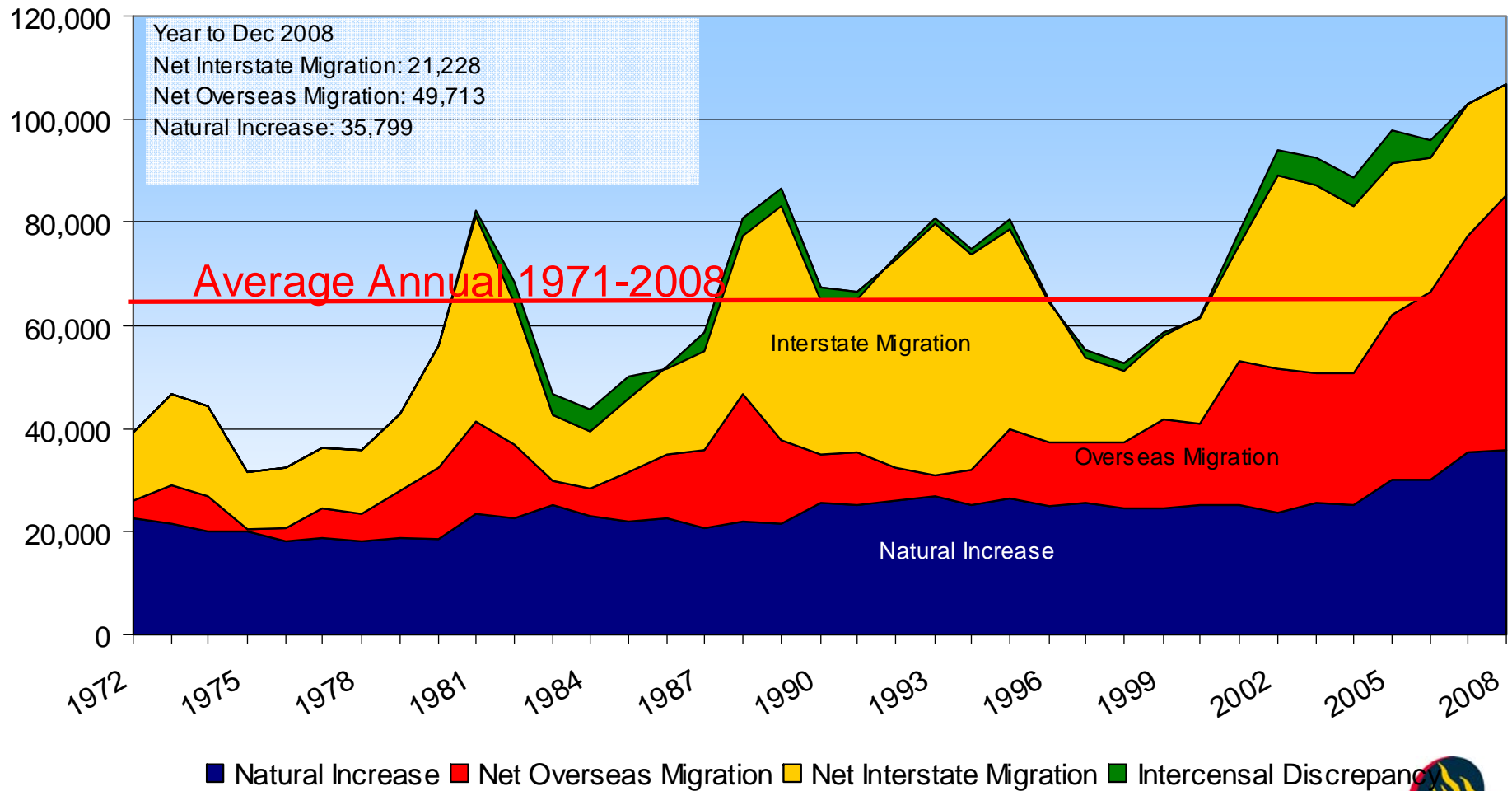
year ending December 2007



Source: ABS, Cat. No. 3101.0

Components of population change

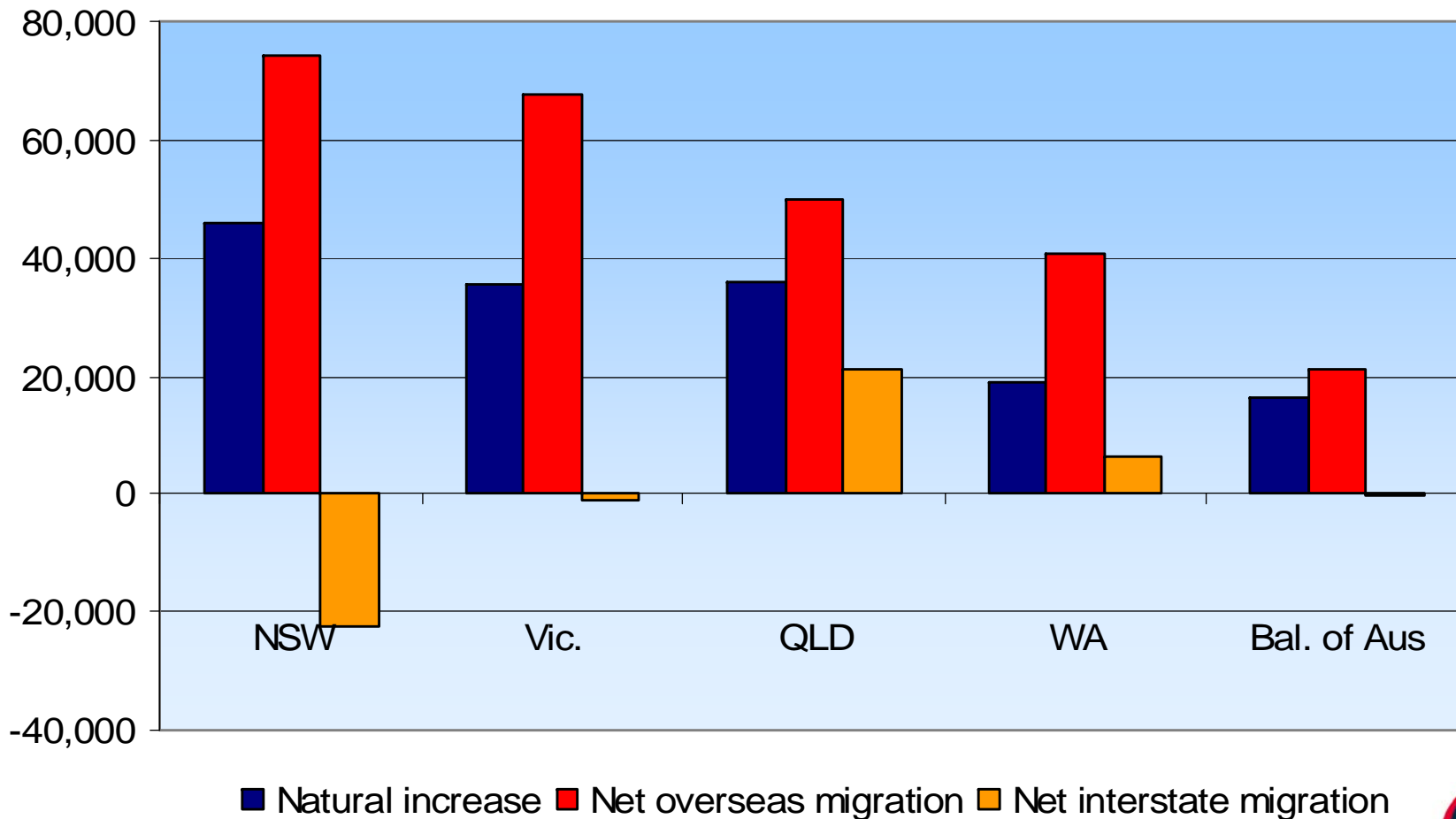
year to December



Source: ABS, Australian Demographic Statistics, Cat No.3101.0

What is driving Queensland's growth?

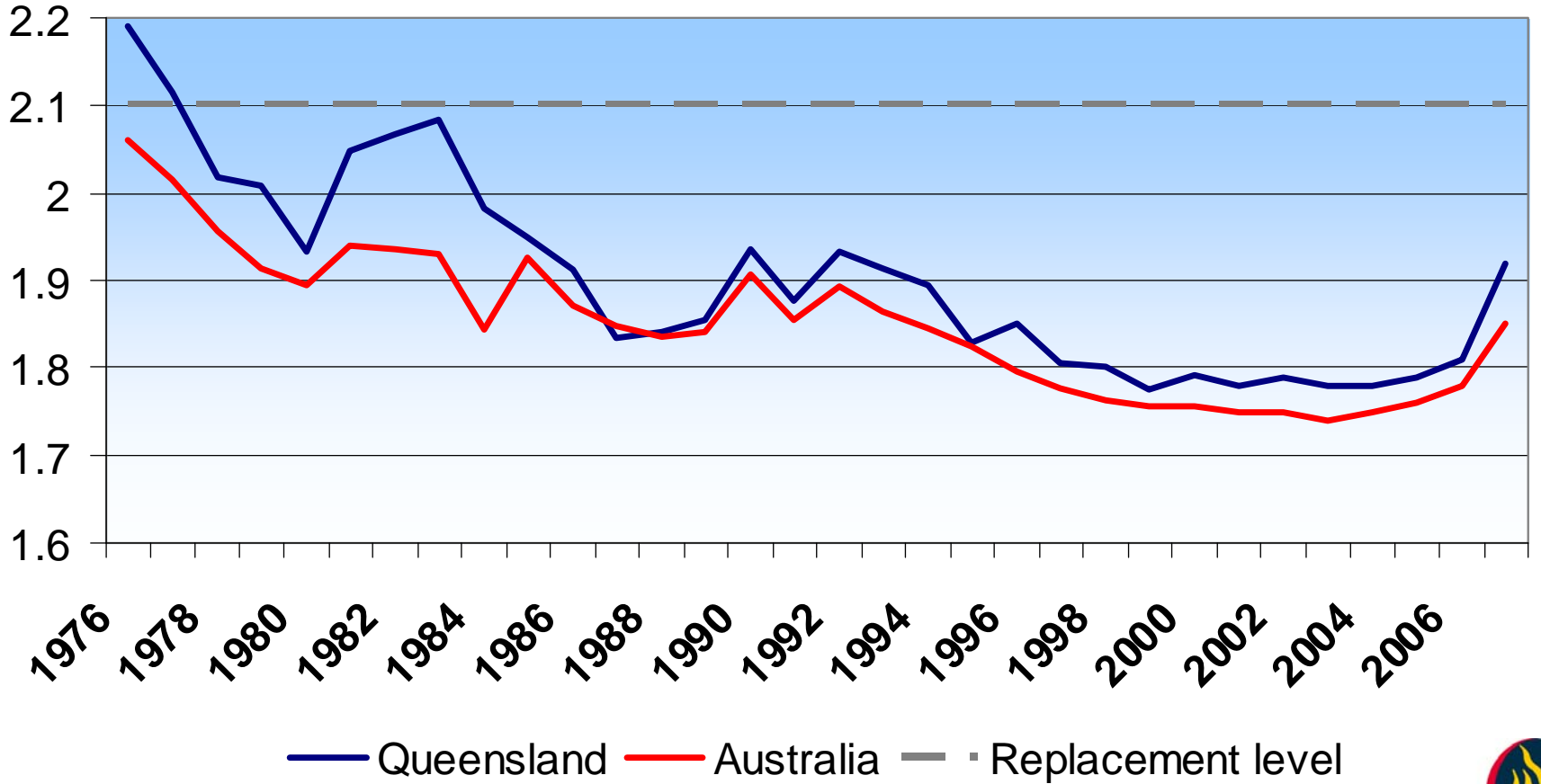
year ending December 2008



■ Natural increase ■ Net overseas migration ■ Net interstate migration

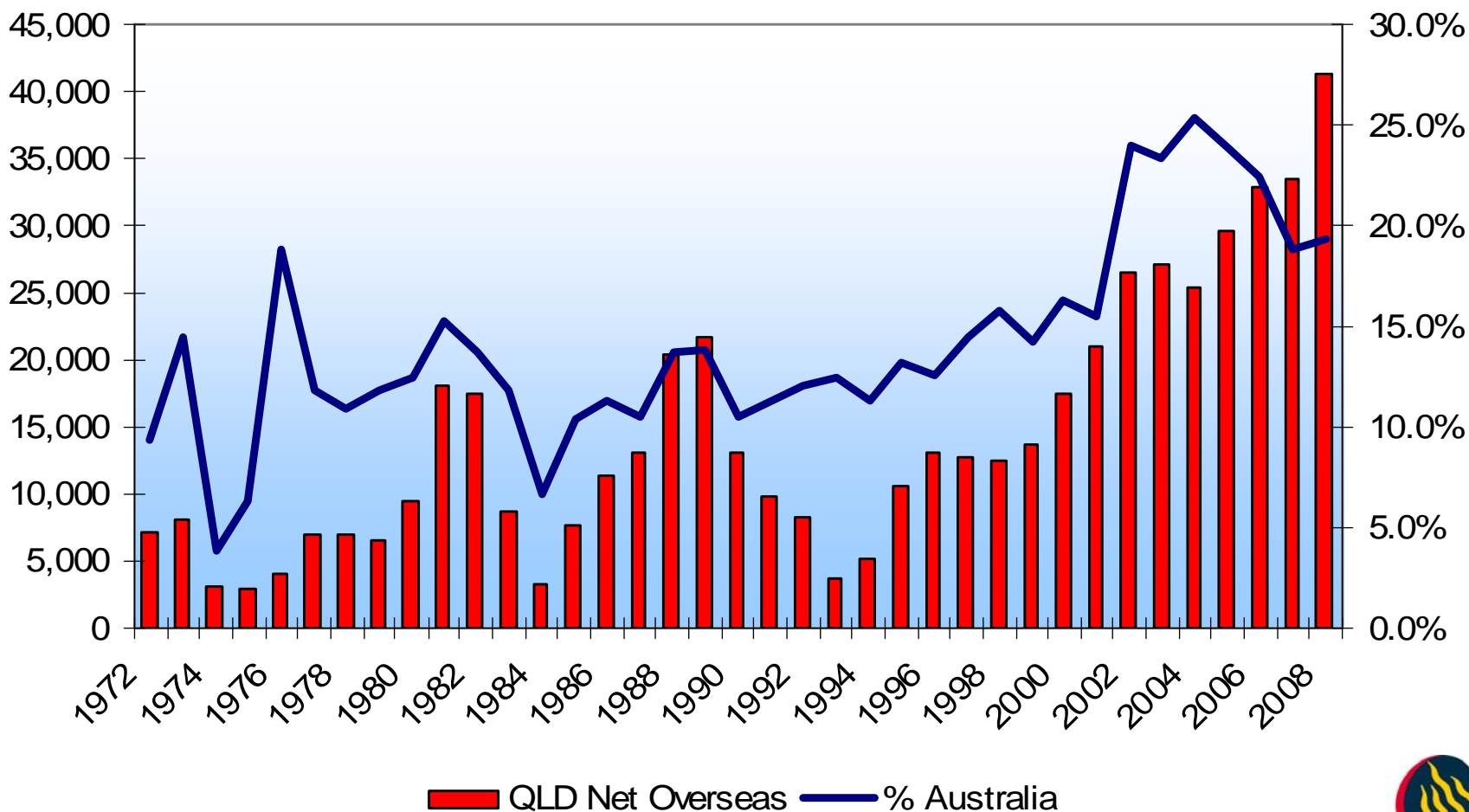
Source: ABS, Australian Demographic Statistics, Cat No.3101.0

Total Fertility Rate and Replacement Level, Queensland and Australia



Source: ABS, Births, Cat. No. 3301.0

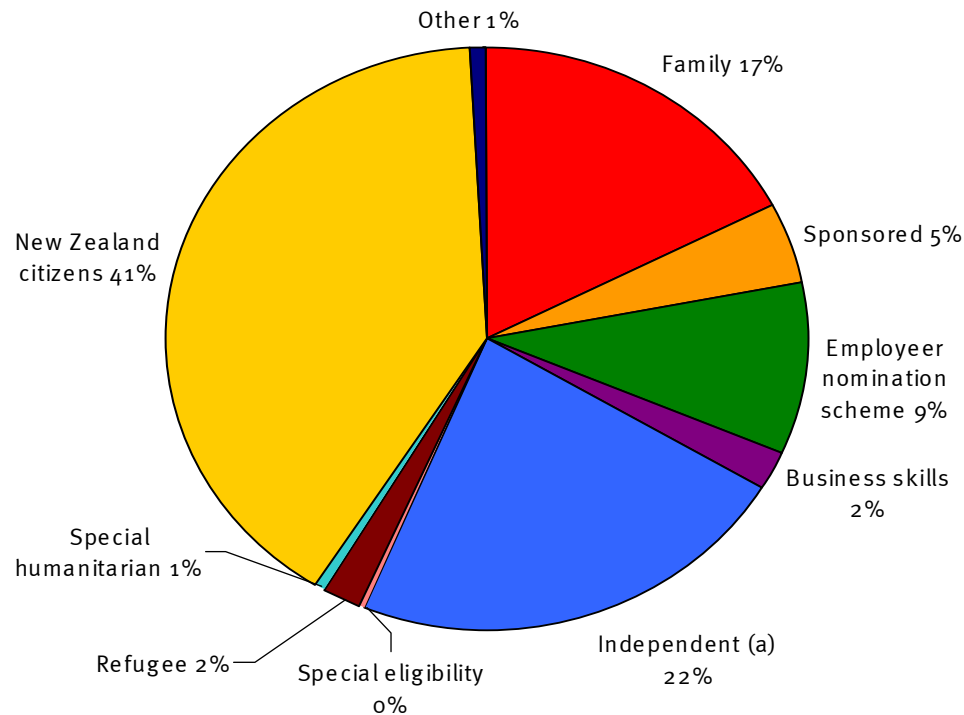
Queensland has been getting about 790 people each week from overseas - years ending December



Source: ABS, Australian Demographic Statistics, Cat No 3101.0

Settler arrivals to QLD by eligibility criteria

Years ending June 2008



Source: Overseas migration to Queensland 2009, PIFU, July 2009

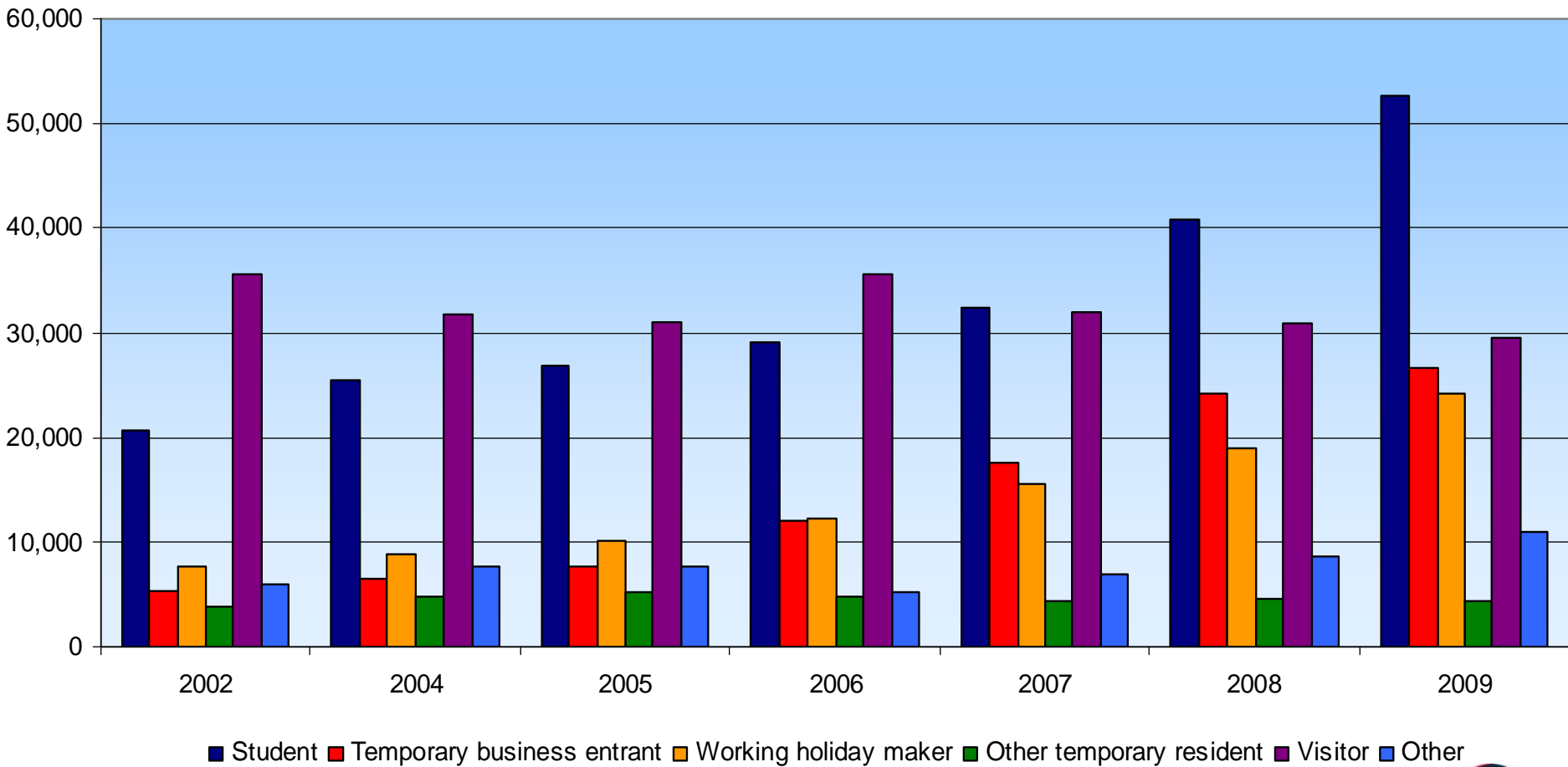
Top 10 birthplace countries for settler arrivals

Year to June 2008

Rank	Country of Birth	Persons	Per cent
1	New Zealand	13,009	40.0%
2	United Kingdom	5,954	18.3%
3	South Africa	1,570	4.8%
4	India	1,228	3.8%
5	Philippines	1,070	3.3%
6	China (Excl. SAR & Taiwan)	846	2.6%
7	Malaysia	500	1.5%
8	Korea	425	1.3%
9	Fiji	420	1.3%
10	Thailand	380	1.2%
	Subtotal	25,402	78.2%
	Total	32,496	100.0%

Source: Overseas migration to Queensland 2009,
PIFU, July 2009

Stock of temporary entrants to QLD by visa category



Source: Department of Immigration and Citizenship

Location of 457 Visa positions in Queensland

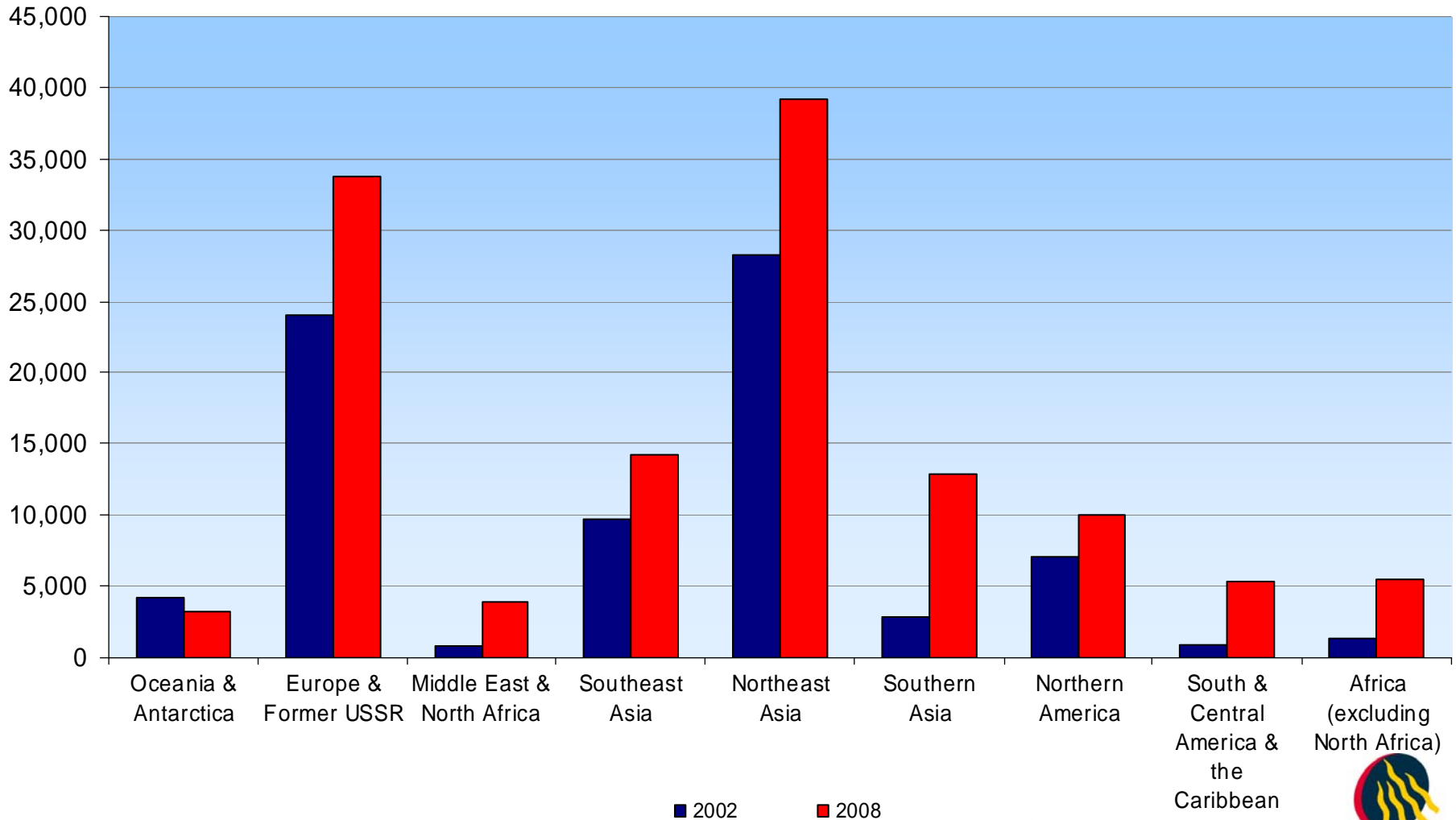
Year to June

Statistical Division	2004-05	2005-06	2006-07	2007-08
Brisbane	2,840	5,990	8,940	12,420
Gold Coast	810	1,030	1,470	1,600
Sunshine Coast	100	310	360	490
West Moreton	20	110	80	100
Wide Bay-Burnett	60	180	440	400
Darling Downs	110	480	540	560
Fitzroy	190	880	950	940
Mackay	310	920	1,080	1,060
Northern	140	590	820	910
Far North	540	770	950	930
Western Queensland	110	260	360	500
Total	5,230	11,520	15,990	19,910

Source: Department of Immigration and Citizenship
Excludes position not specified

Temporary entrants by major citizenship group

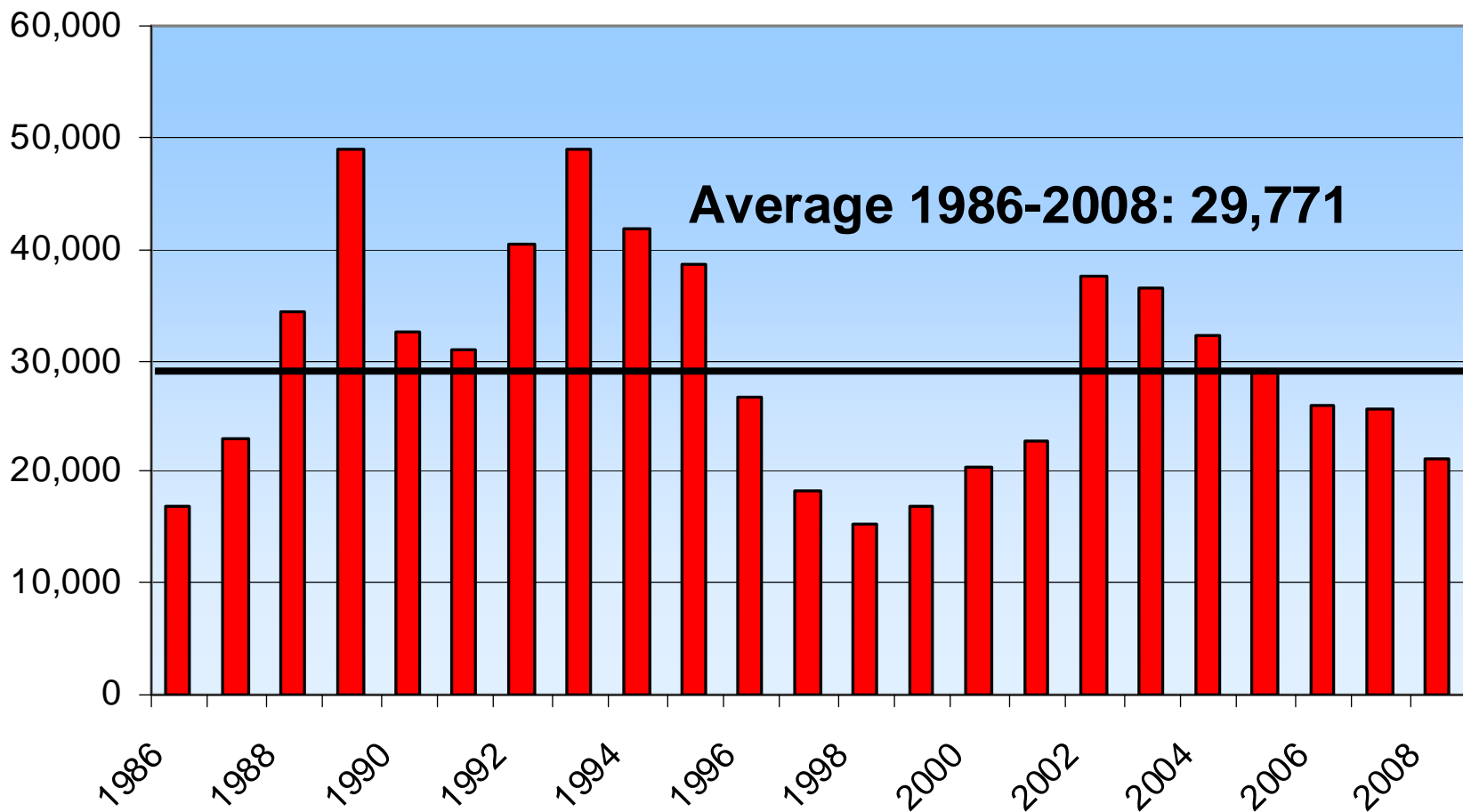
Years ending June



Source: Overseas migration to Queensland 2009, PIFU, July 2009

Net interstate migration to Queensland

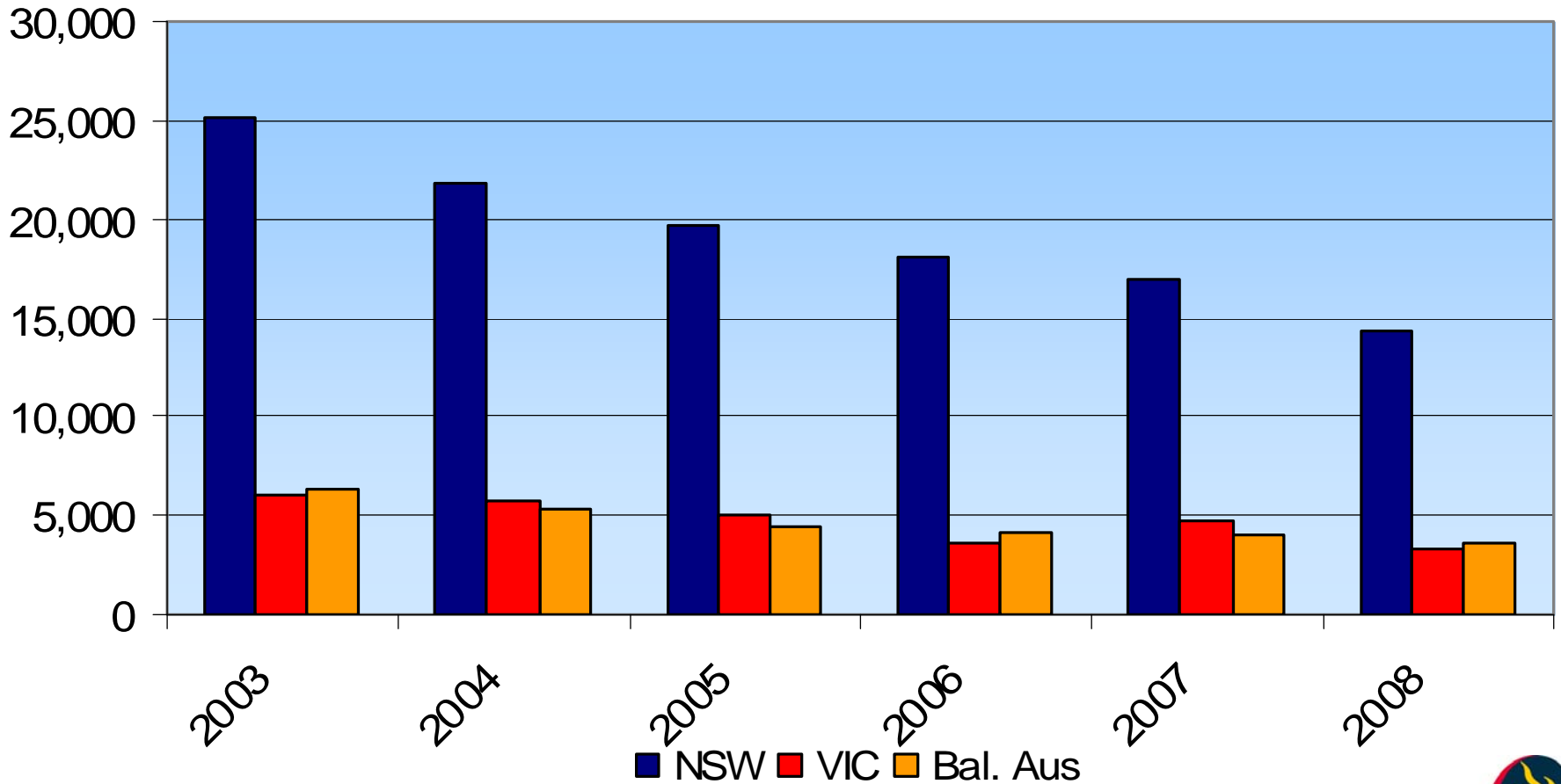
years ending December



Source: ABS, Cat. No. 3101.0 and historical data

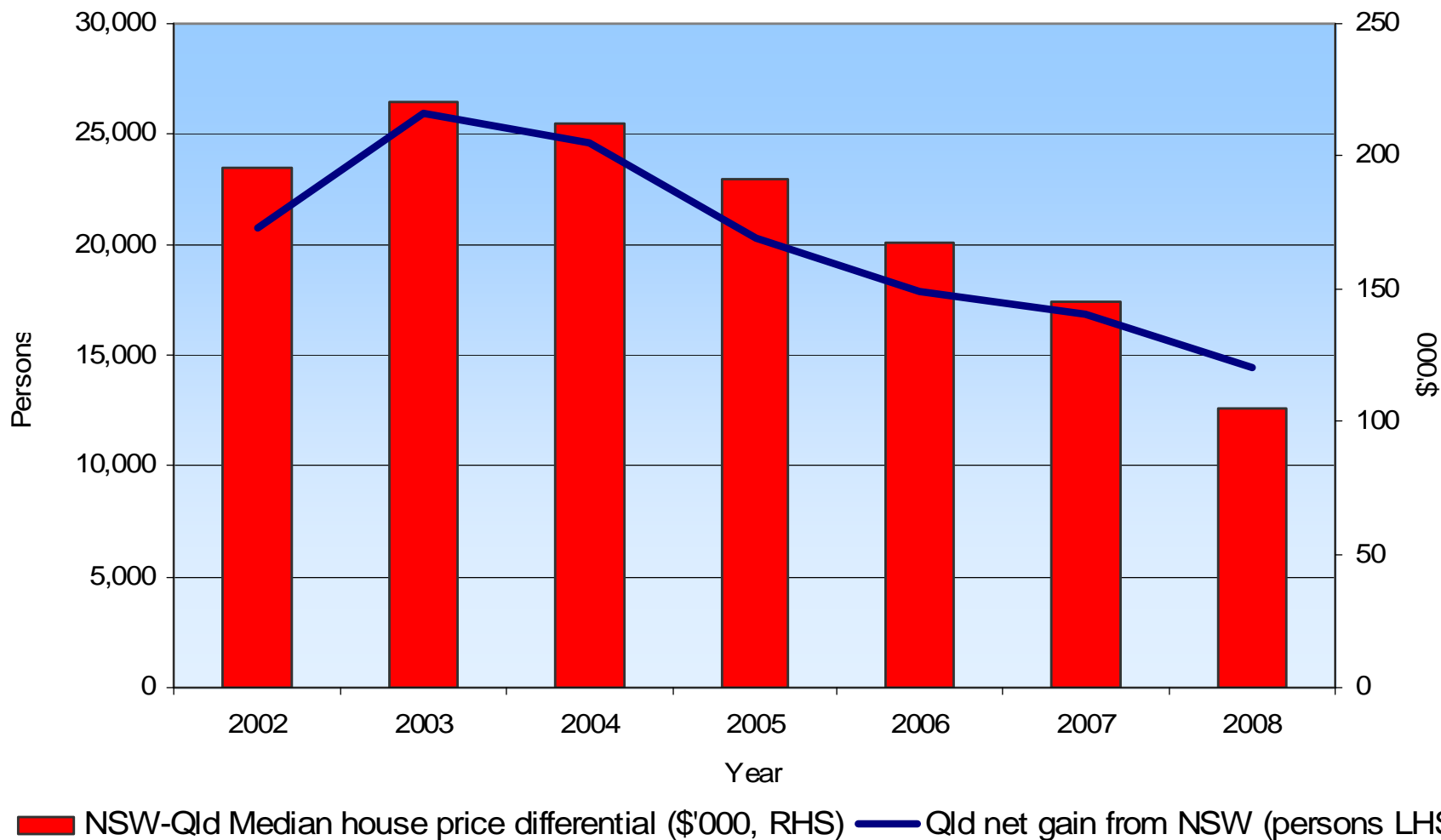
Net interstate migration gains to Queensland, 2003-2008

years ending December



Source: ABS, Australian Demographic Statistics, Cat No.3101.0

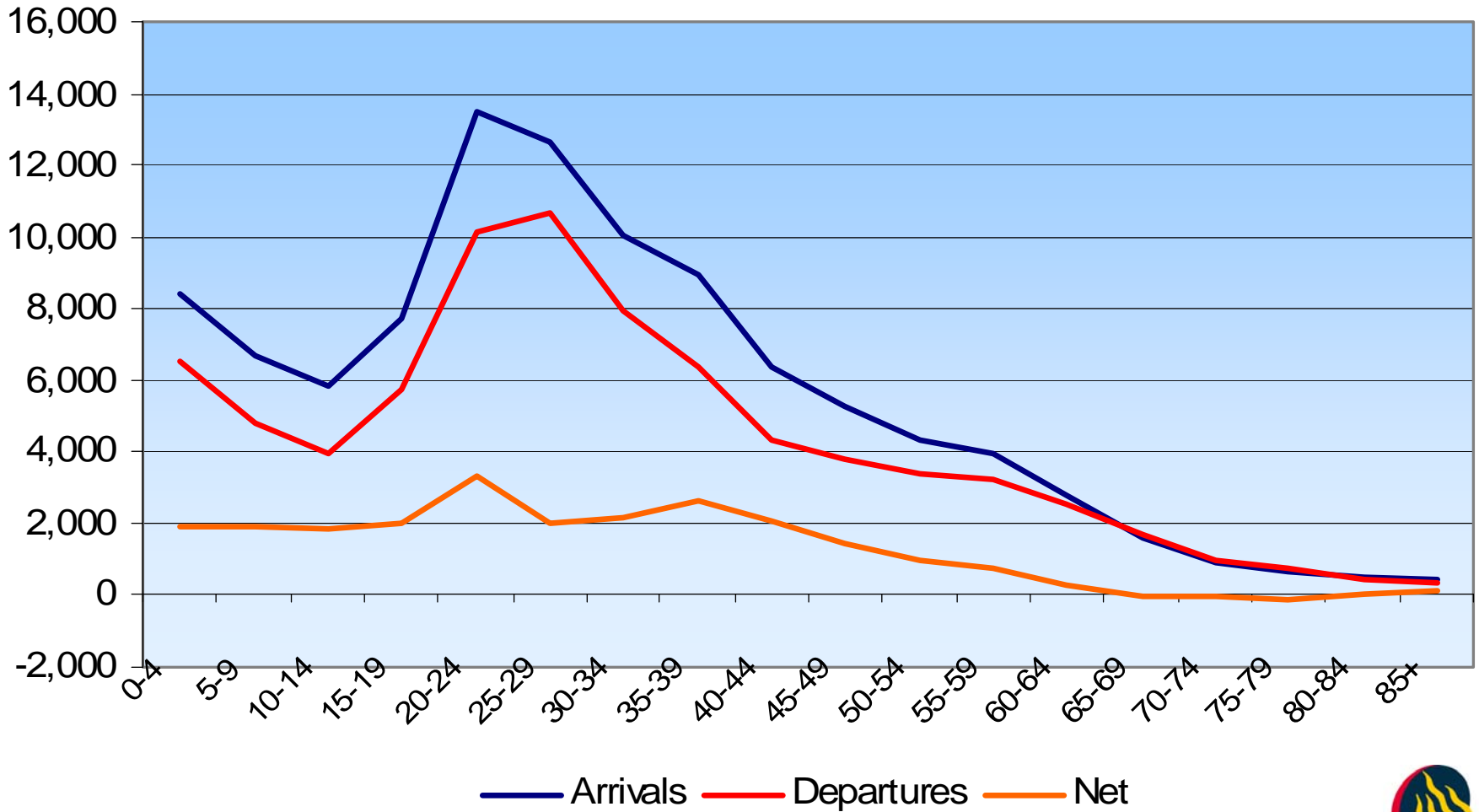
Net interstate migration and median house price differential, Queensland and New South Wales, year to 30 June 2002 to 2008



Source: ABS, Australian Demographic Statistics
Cat No 3101.0, 3412.0, Cat No 6416.0

Age profile of interstate migration, Queensland

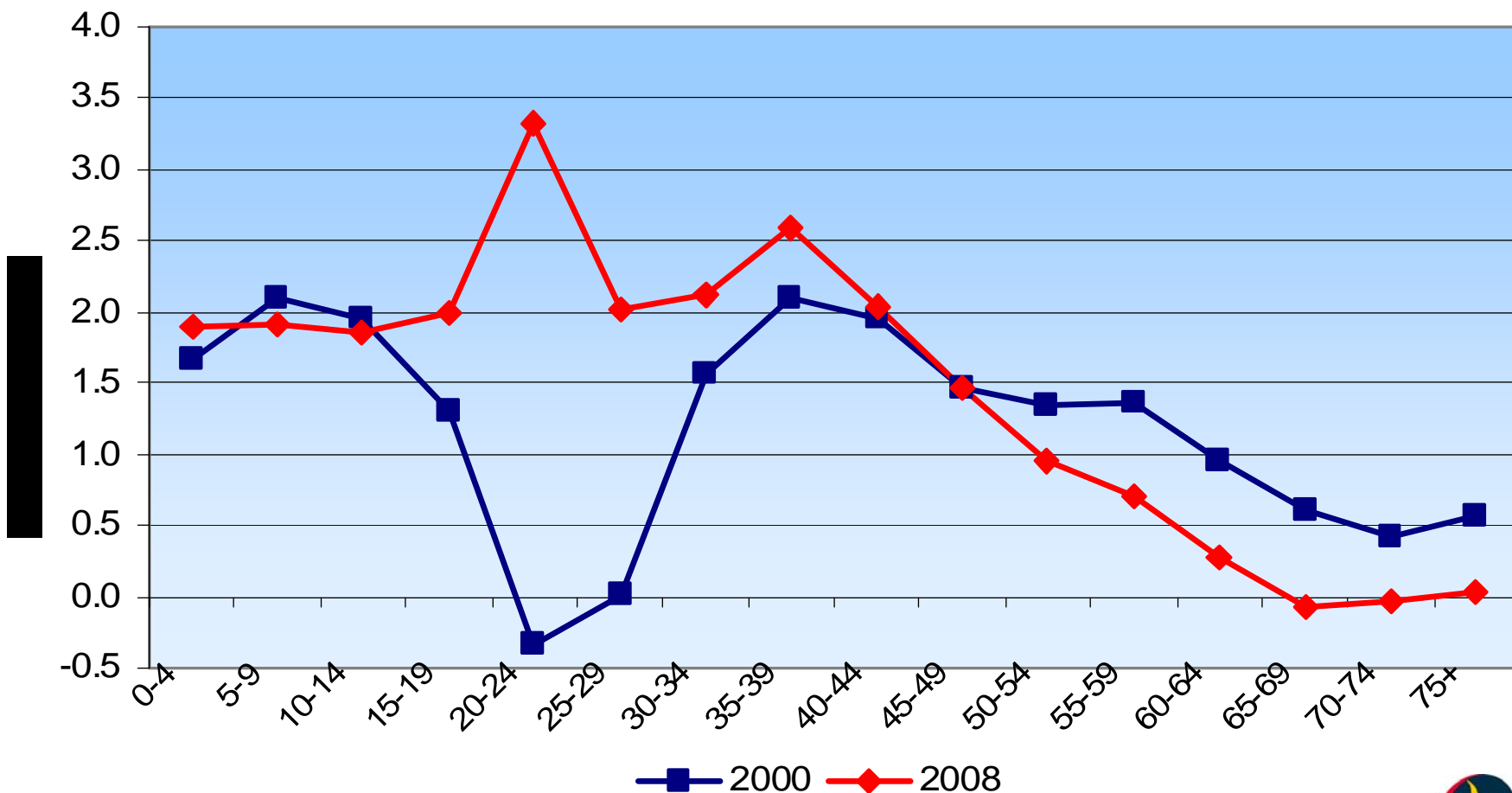
Year ending June 2008



Source: ABS, Migration Australia, Cat No 3412.0

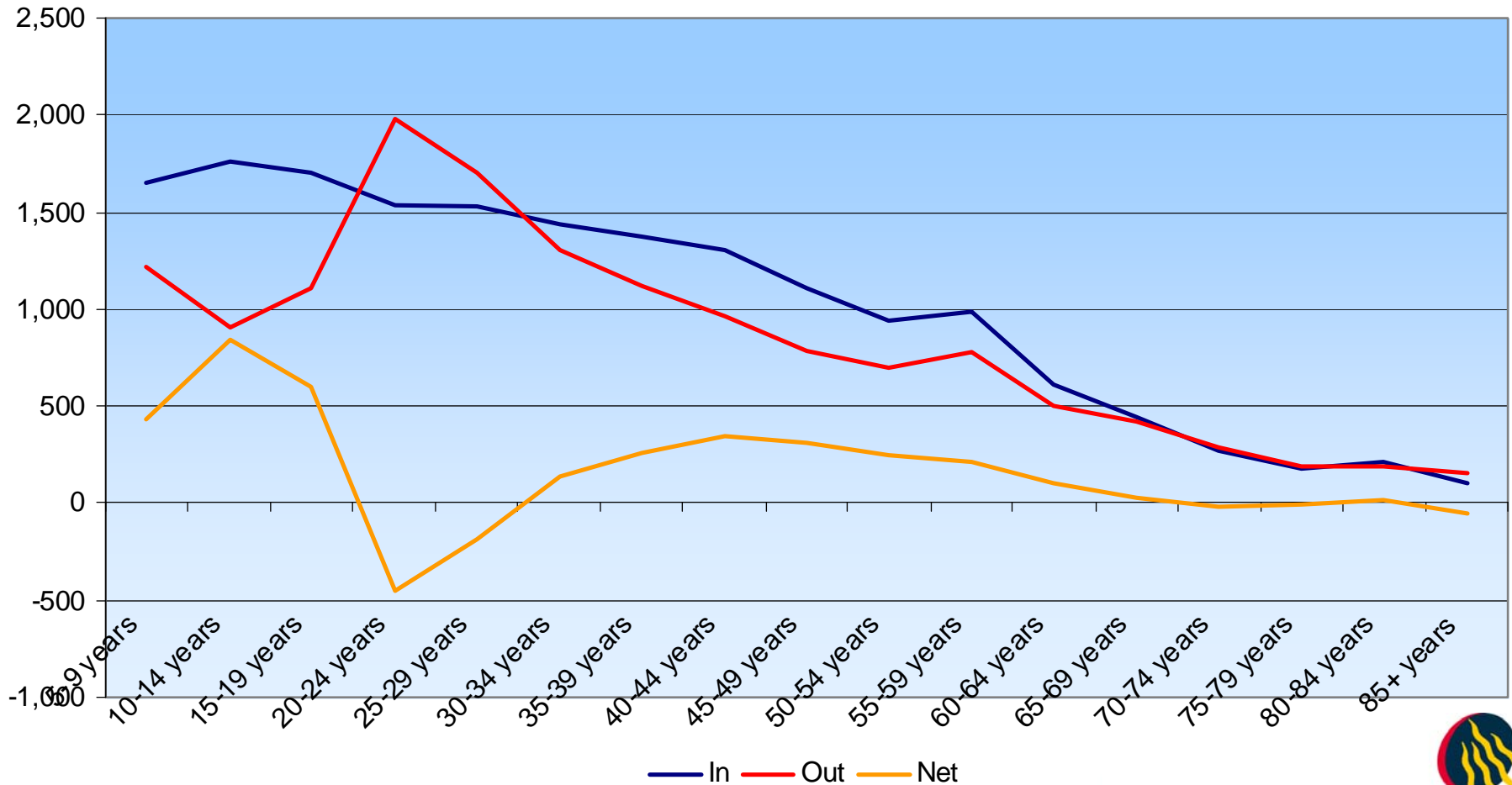
Age profile of net interstate migration, Queensland

year ending June



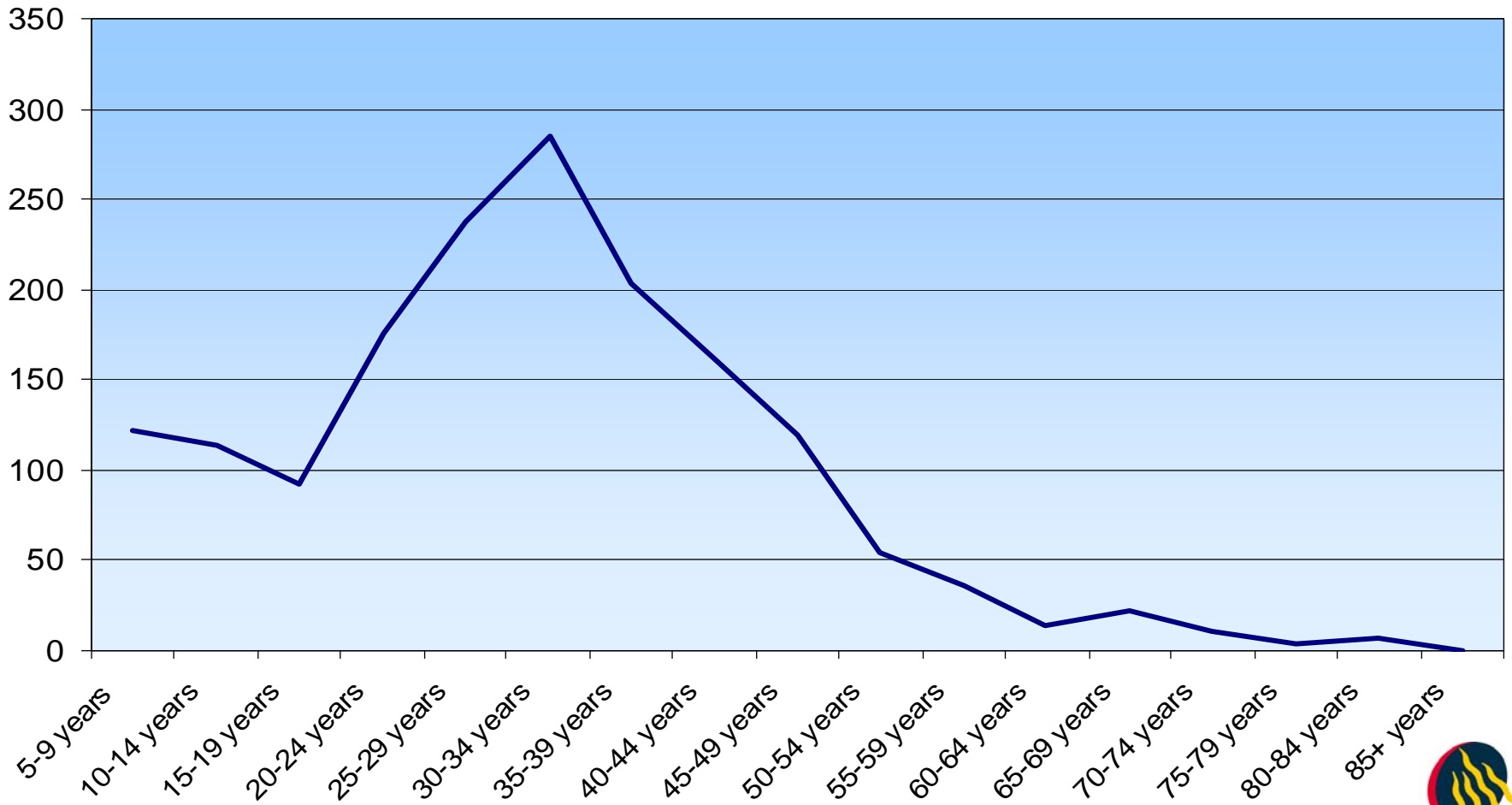
Source: ABS unpublished

Age profile of internal migration, Rockhampton (R) 2001-2006



Source: Census of Population and Housing 2006

Age profile of inbound international migration, Rockhampton (R) 2001-2006



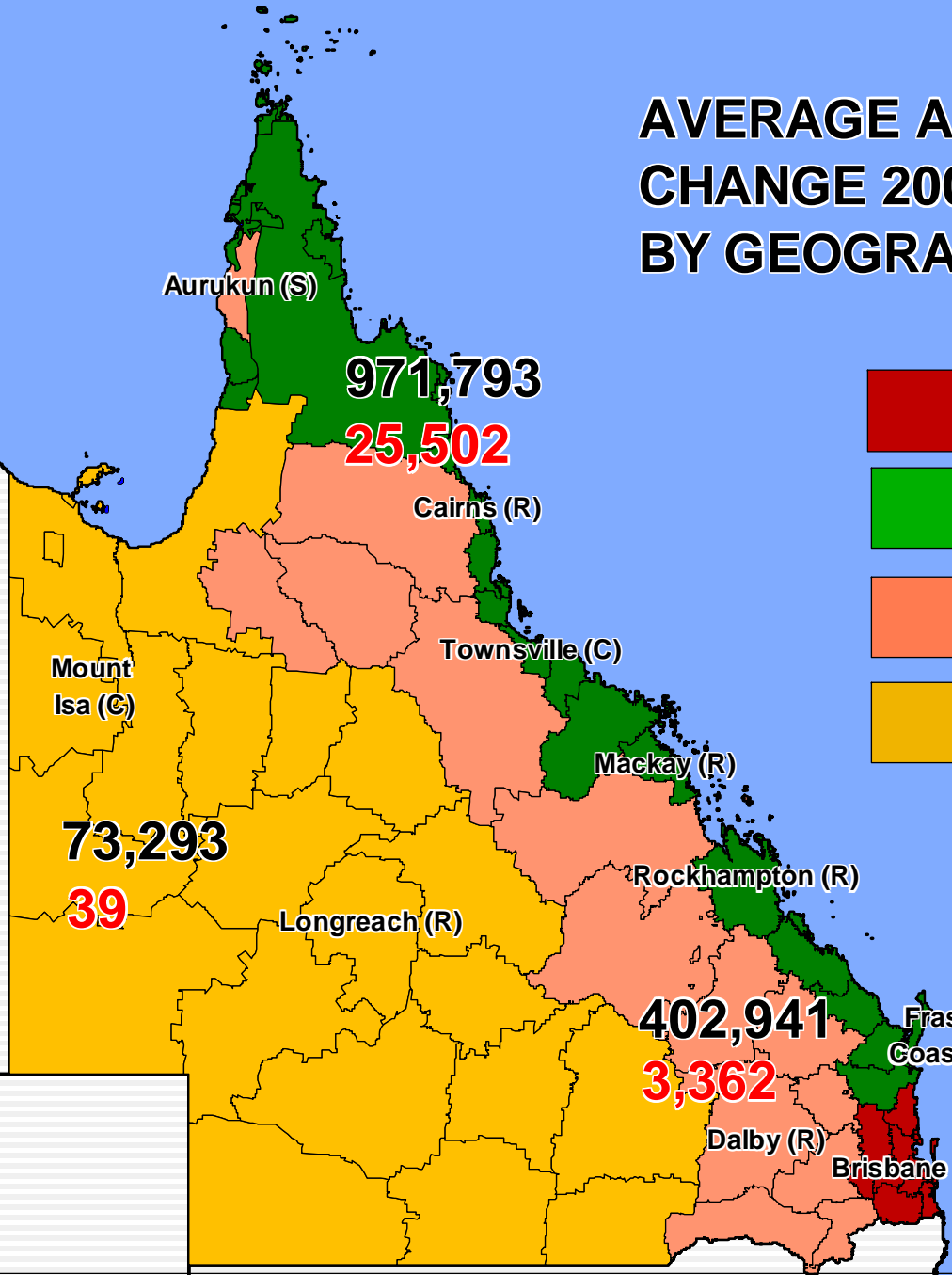
Source: Census of Population and Housing 2006

— Overseas inflow



Queensland
Government

AVERAGE ANNUAL POPULATION CHANGE 2006-2008(p*), QUEENSLAND BY GEOGRAPHIC REGION



- South East (10 LGAs)
- East Coast (26 LGAs)
- Inland (15 LGAs)
- Western (23 LGAs)

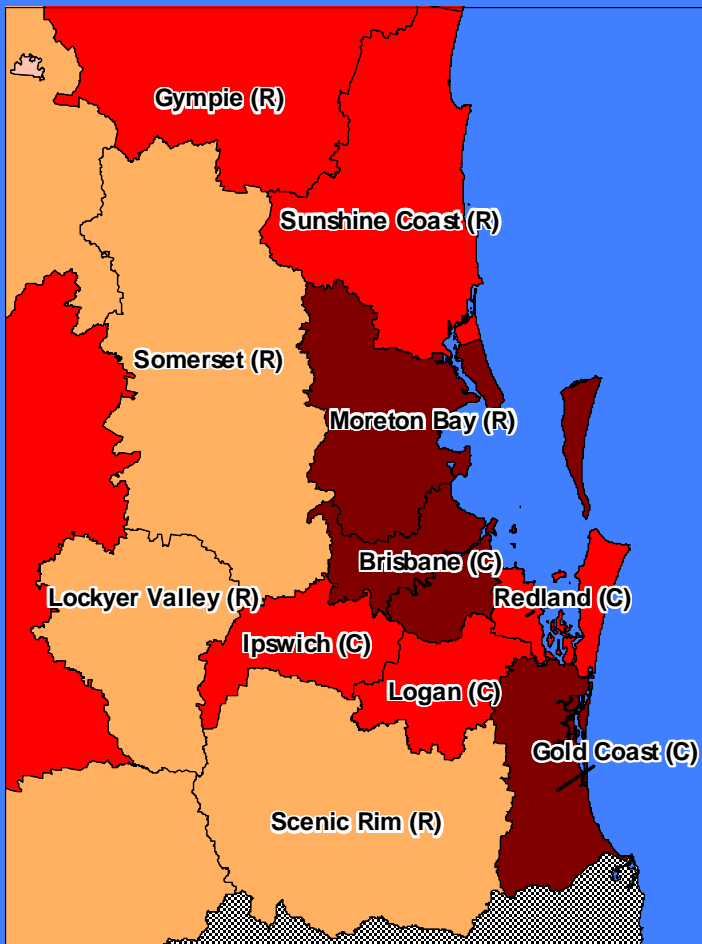
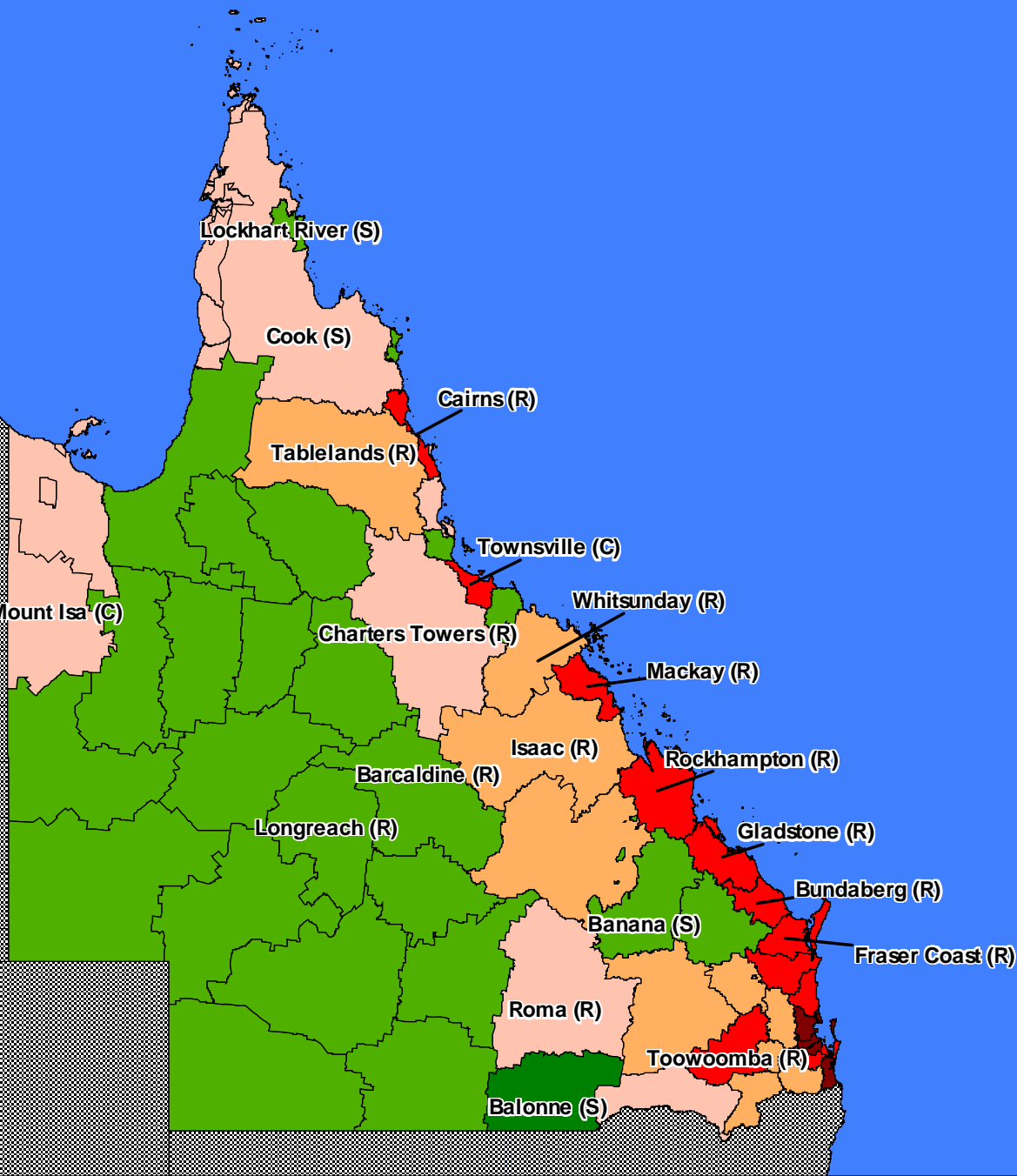
Queensland:
4,293,915 ERP 2008
101,504 Average Annual Change

(p*) Preliminary Estimate
 Rebased of Census data

Average Annual Population Change

30 June 2001 - 30 June 2008

10,000 to 18,743	(3)
1,000 to 10,000	(13)
100 to 1,000	(11)
0 to 100	(20)
-100 to 0	(27)
-200 to -100	(1)



10 Largest growing LGAs in Regional Queensland

Average annual growth, 2001-2006, 2007-2008

Rank	LGA	2001-2006		2007-2008	
		No.	%	No.	%
1	Cairns (RC)	3,889	3.0	5,985	3.9
2	Townsville (C)	4,098	2.8	5,134	3.0
3	Fraser Coast (RC)	2,968	4.0	3,124	3.4
4	Mackay (RC)	3,250	3.6	2,650	2.4
5	Bundaberg (RC)	1,791	2.2	2,039	2.3
6	Gladstone (RC)	1,514	3.3	1,871	3.4
7	Toowoomba (RC)	2,741	1.8	1,657	1.1
8	Rockhampton (RC)	1,858	1.9	1,412	1.3
9	Gympie (RC)	1,115	2.9	1,084	2.4
10	Whitsunday (RC)	685	2.5	997	3.1

Ranked by change 2007-2008

Source: ABS Cat No 3218.0.



Queensland
Government

Population growth in Fitzroy SD

Average annual growth, 2001-2006 and 2007-2008, and share of SD growth (%)

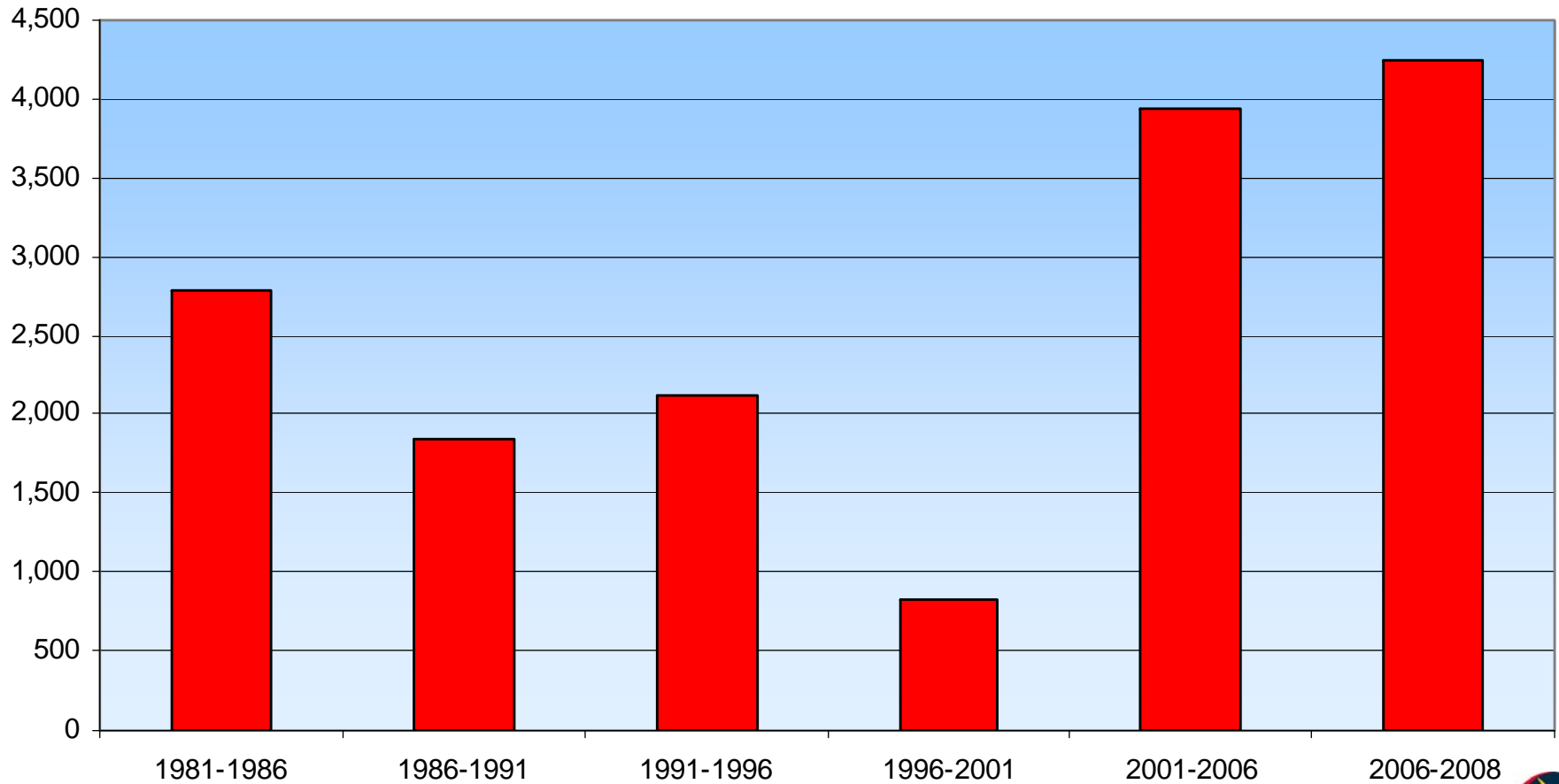
LGA	2001-2006		2007-2008	
	No.	%	No.	%
Banana	-53	-1.4	47	1.2
Central Highlands	639	16.2	472	12.4
Gladstone	1,514	38.5	1,871	49.0
Rockhampton	1,858	47.2	1,412	37.0
Woorabinda	-23	-0.6	18	0.5
Fitzroy SD	3,935	100.0	3,820	100.0

Source: ABS Cat No 3218.0



Queensland
Government

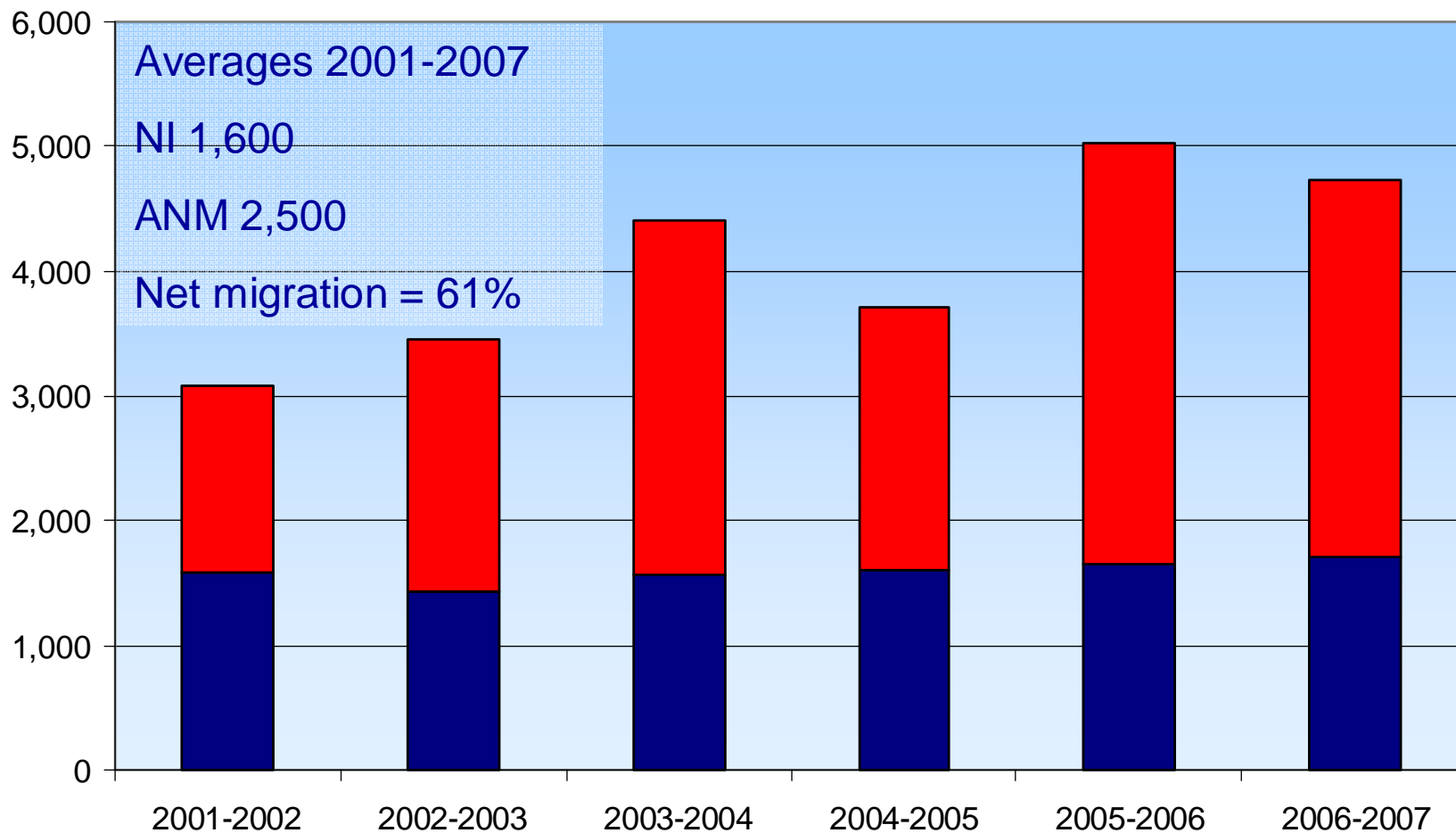
Fitzroy SD – average annual growth, 1981-2008



Source: ABS Cat No 3218.0

Components of population change, Fitzroy SD

years ending June



Source: ABS Cat No. 3218.0, 3301.0, 3302.0 and PIFU calculations

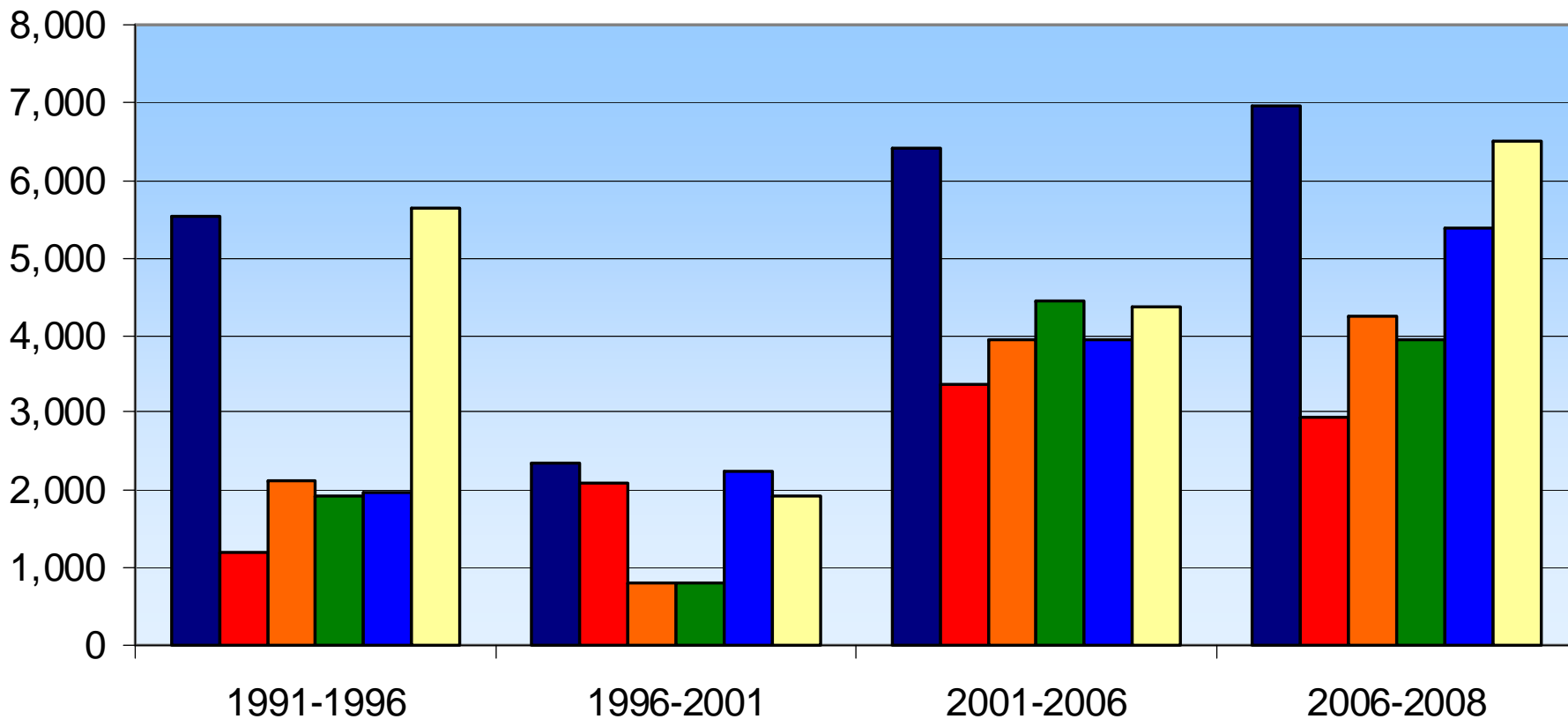
■ Natural Increase ■ Assumed Net Migration



Queensland
Government

How does growth in CQANM compare with other regions?

Average annual change



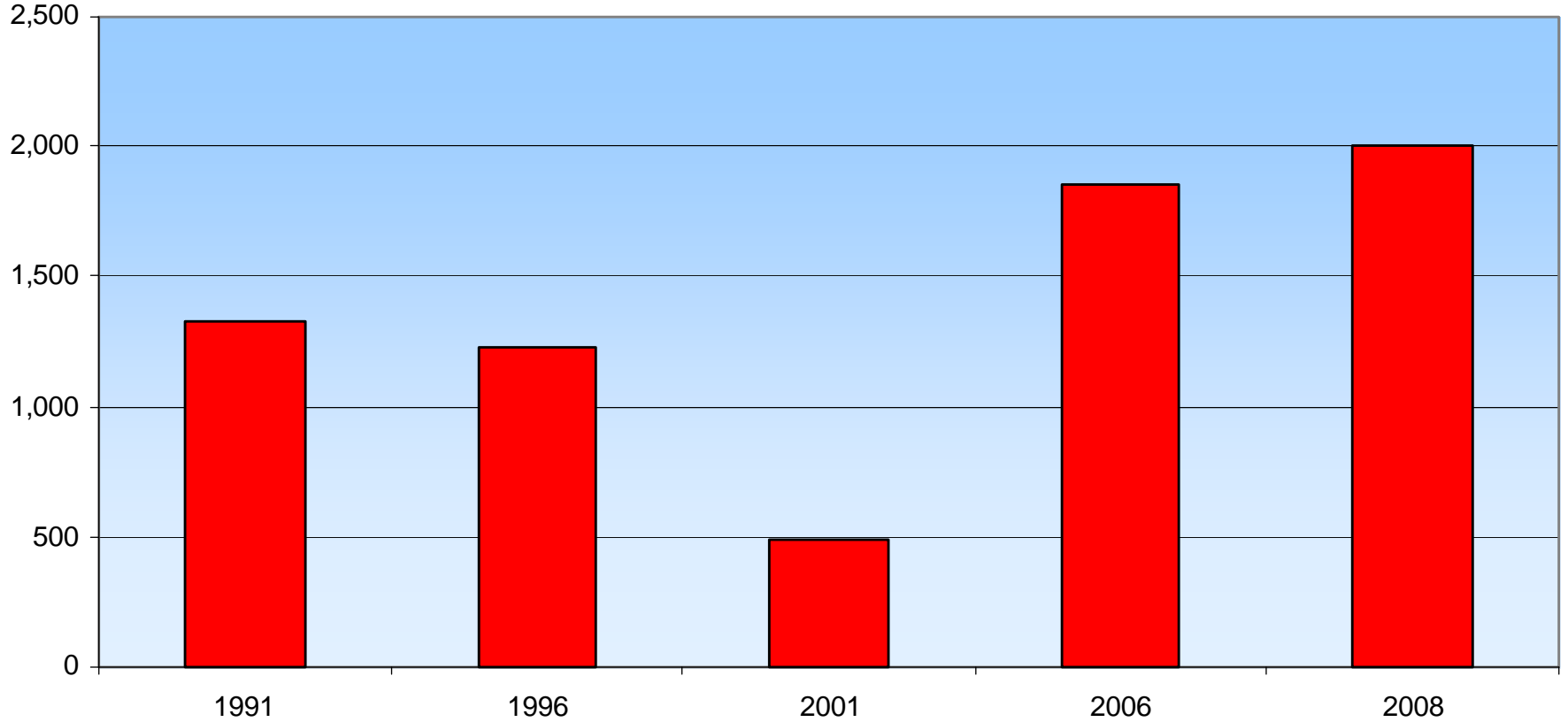
■ WBB 2026 ■ Darling Downs ■ CQANM ■ WHAM ■ NQ ■ Far North



Queensland
Government

Rockhampton Regional Council population change

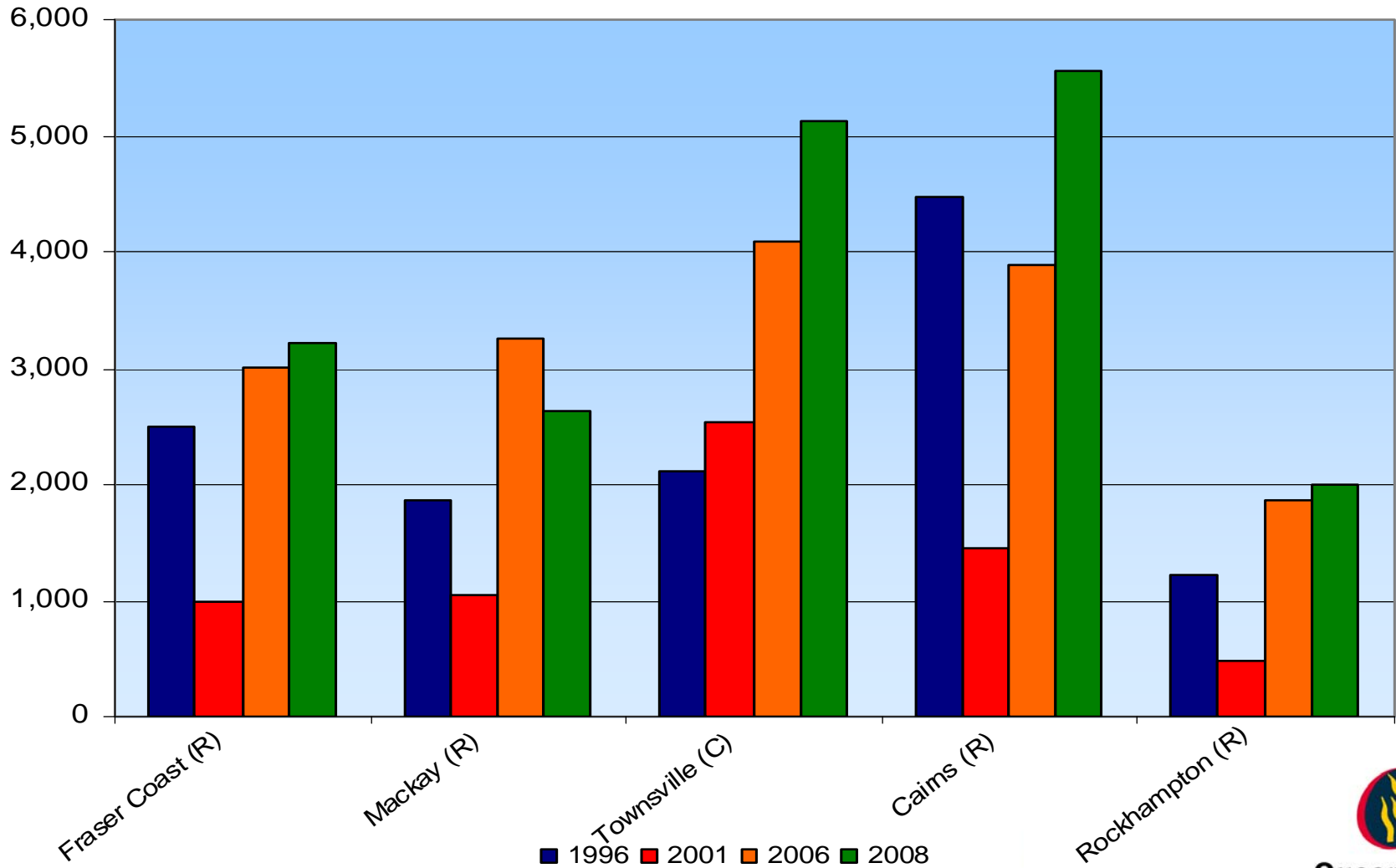
Average annual growth, five years ending 1991, 1996, 2001, 2006 and two years ending 2008



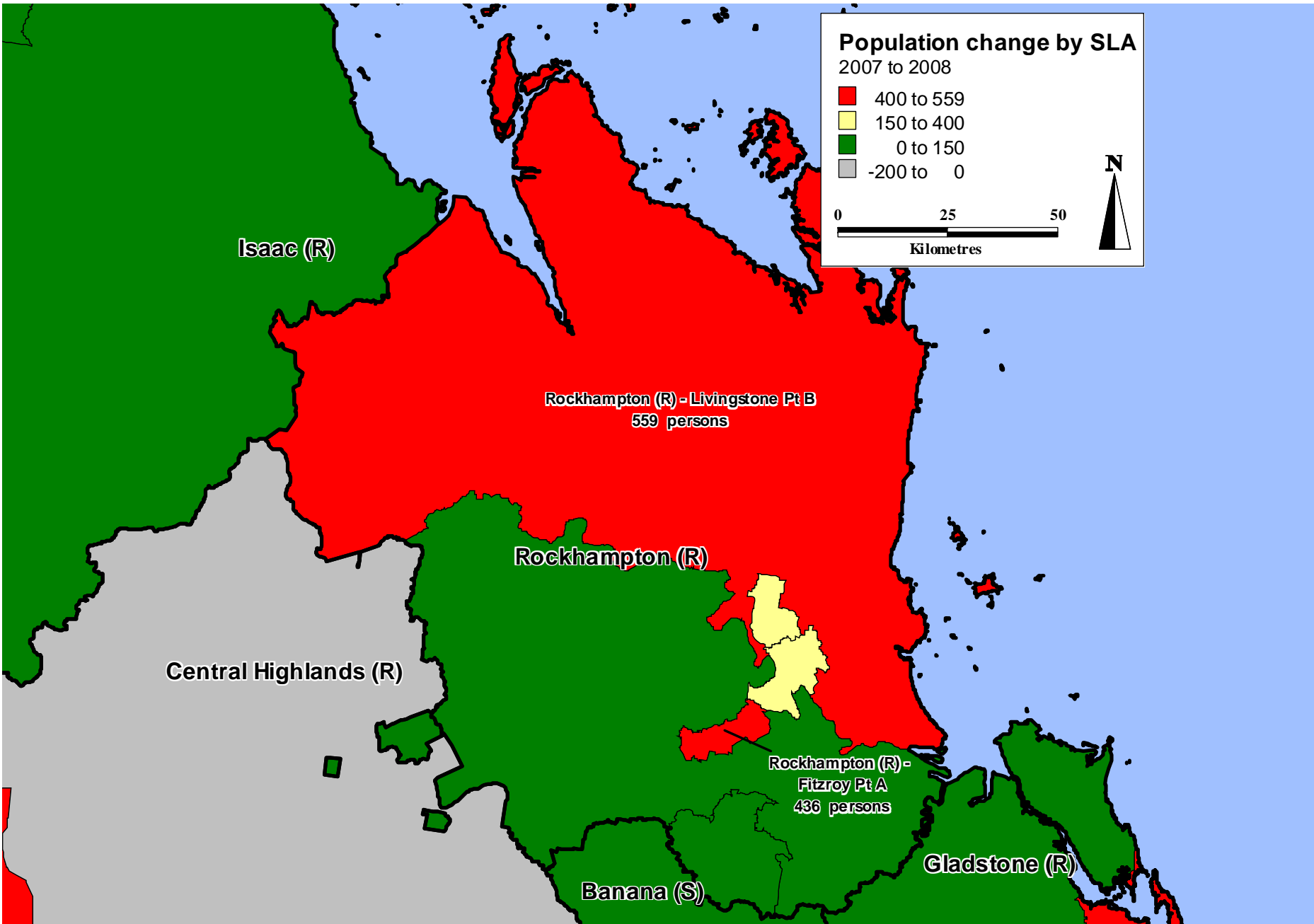
Source: ABS Cat No. 3218.0

Comparing growth in Queensland's larger regional cities

Years ending June



Population change, Rockhampton SLAS 2007-2008



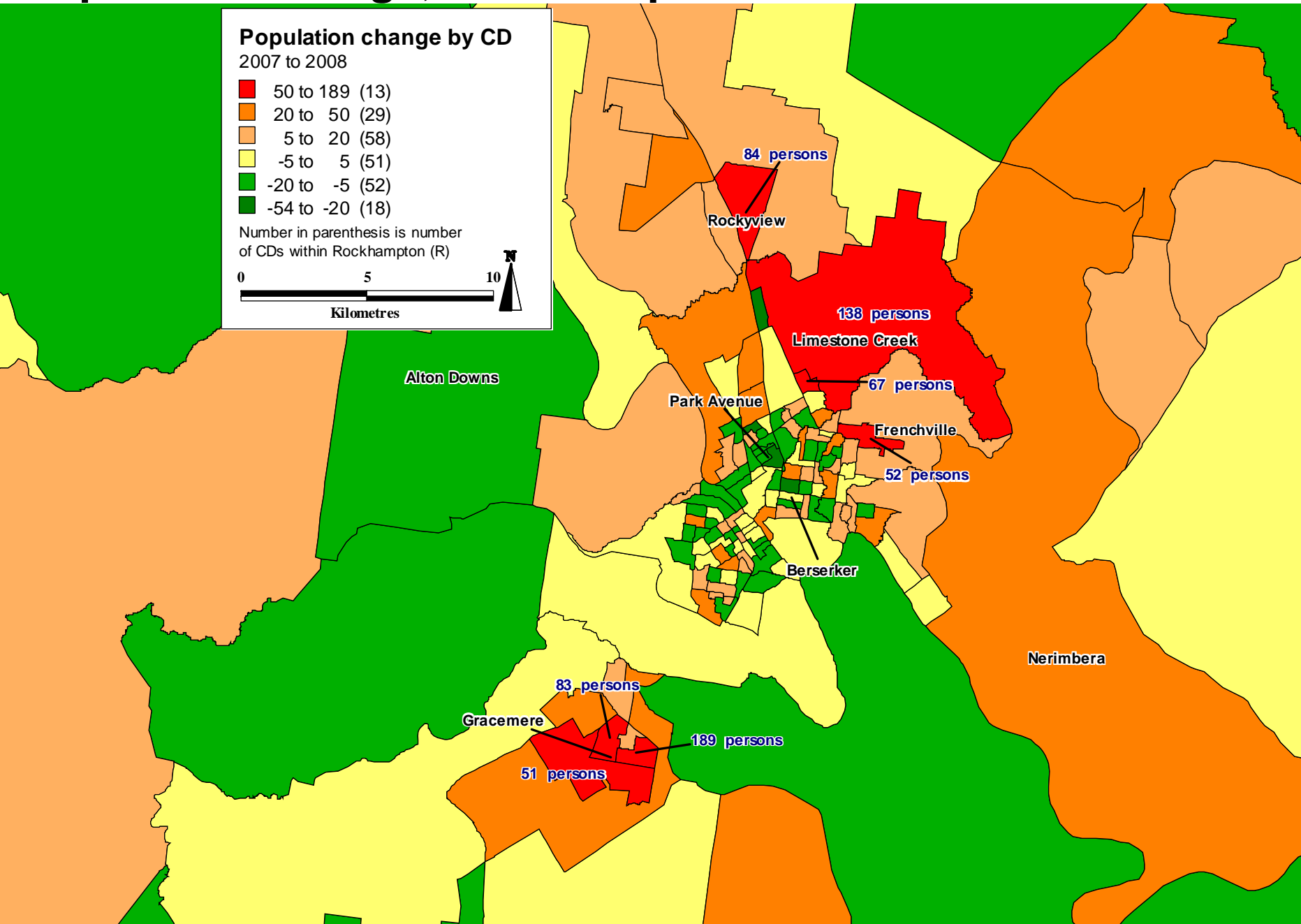
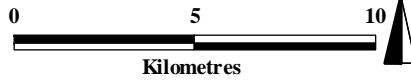
Population change, Rockhampton Urban Area 2007-2008

Population change by CD

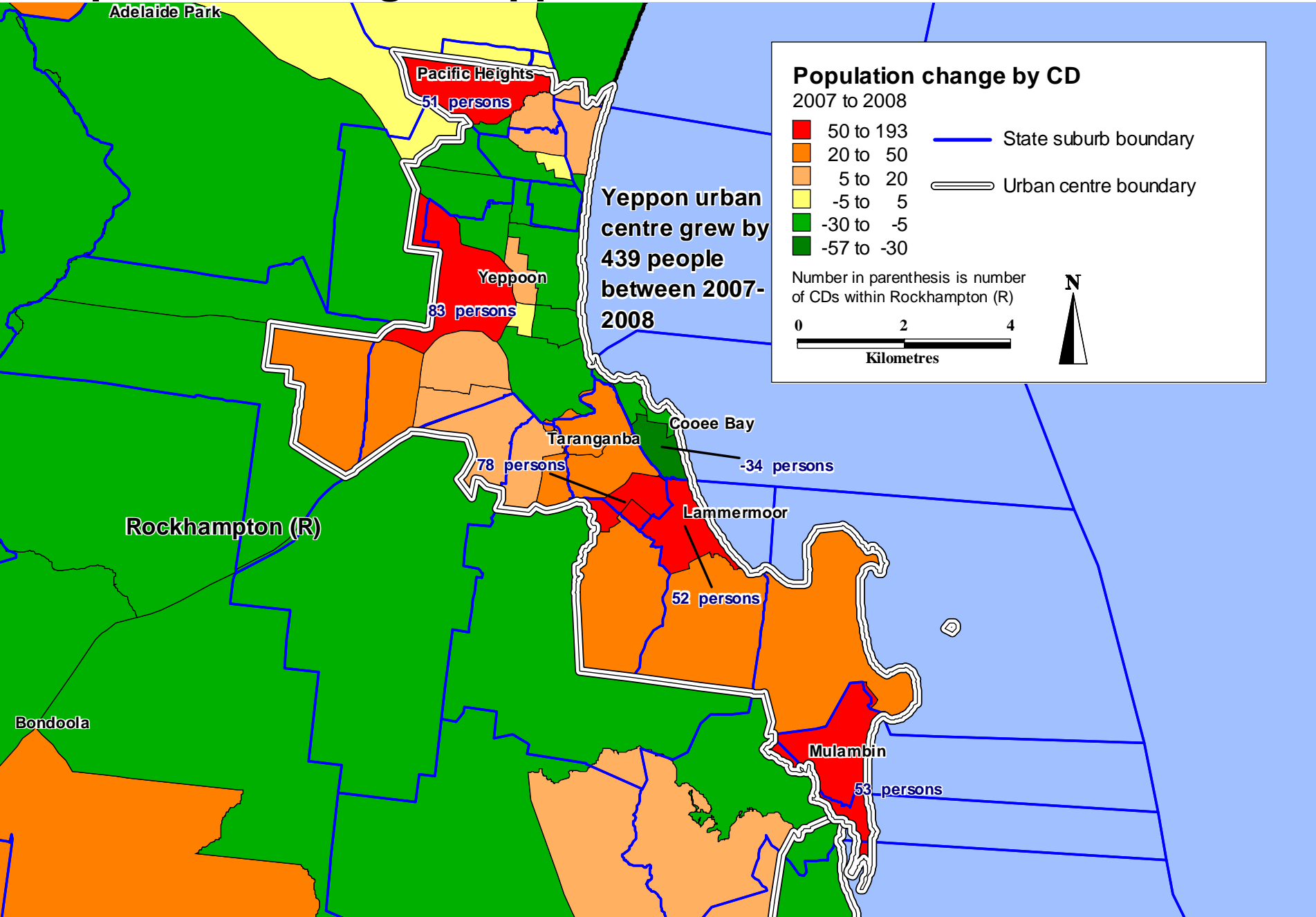
2007 to 2008

- 50 to 189 (13)
- 20 to 50 (29)
- 5 to 20 (58)
- 5 to 5 (51)
- 20 to -5 (52)
- 54 to -20 (18)

Number in parenthesis is number of CDs within Rockhampton (R)



Population change, Yeppoon area 2007-2008



Top 10 urban centres and localities in Fitzroy SD

Rank	UCL	2001	2006	2008	2001-2006		2006-2008	
		no.	no.	no.	no.	%	no.	%
1	Rockhampton	60,509	64,771	65,798	852	1.3	513	0.8
2	Gladstone	26,736	30,635	32,415	780	2.5	890	2.7
3	Yeppoon	11,937	14,087	15,220	430	3.1	566	3.7
4	Emerald	9,931	11,757	12,592	365	3.1	417	3.3
5	Gracemere	4,189	5,357	6,163	234	4.4	403	6.5
6	Biloela	5,531	5,728	5,758	39	0.7	15	0.3
7	Blackwater	4,762	5,371	5,156	122	2.3	-108	-2.1
8	Tannum Sands	3,630	4,396	4,638	153	3.5	121	2.6
9	Boyne Island	3,642	3,907	4,202	53	1.4	148	3.5
10	Emu Park	2,747	3,150	3,342	81	2.6	96	2.9

Ranked by ERP 2008

Source: PIFU calculations



Summary

Queensland had record levels of population growth in excess of 100,000 people each year over the last two years

High growth is driven primarily by strong levels of overseas migration which is more than twice the level of interstate migration.

40% of settler arrivals to Qld come from New Zealand followed by UK with 18%

Increasing number of overseas migrants enter Australia as temporary entrants, particularly students and short to medium term workers.

Natural increase is also strong accounting for 34% of Qld's growth in 2008. A record 63,000 births occurred in 2008 more than 10,000 higher 5 years ago.



Summary continued...

Rockhampton (R) ranks at number eight and Gladstone (R) number six in the top 10 for largest growing LGAs in Regional Queensland.

Rockhampton (R) grew by 1,412 in 2007-8, about one quarter lower compared with a average of 1,858 in the 5 years to 2006. Gladstone (R) grew by 1,871 in 2007-8 compared with an average of 1,514 in the 5 years 2006.

Migration to the Fitzroy Region accounted for 61% of the Region's population growth since 2001. The Region's growth of nearly 4,000 people was similar to the Mackay Region.

Most of the population growth in Rockhampton (R) 2007-8 occurred in Yeppoon (439) followed by Gracemere (393) and former Rockhampton City (182).





Department of **Infrastructure and Planning**
Planning Information and Forecasting Unit
PO Box 15009 City East Qld 4002 Australia
tel +61 7 3237 1115
fax +61 7 3235 4071
pifu@dip.qld.gov.au

www.dip.qld.gov.au