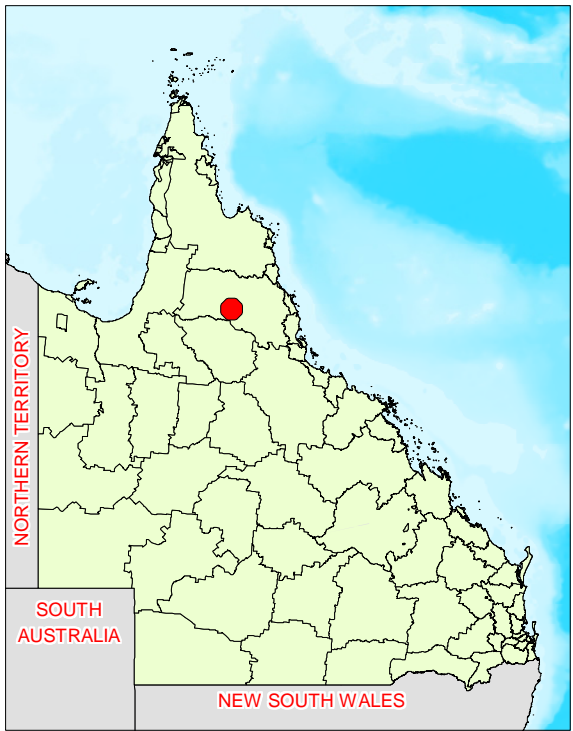
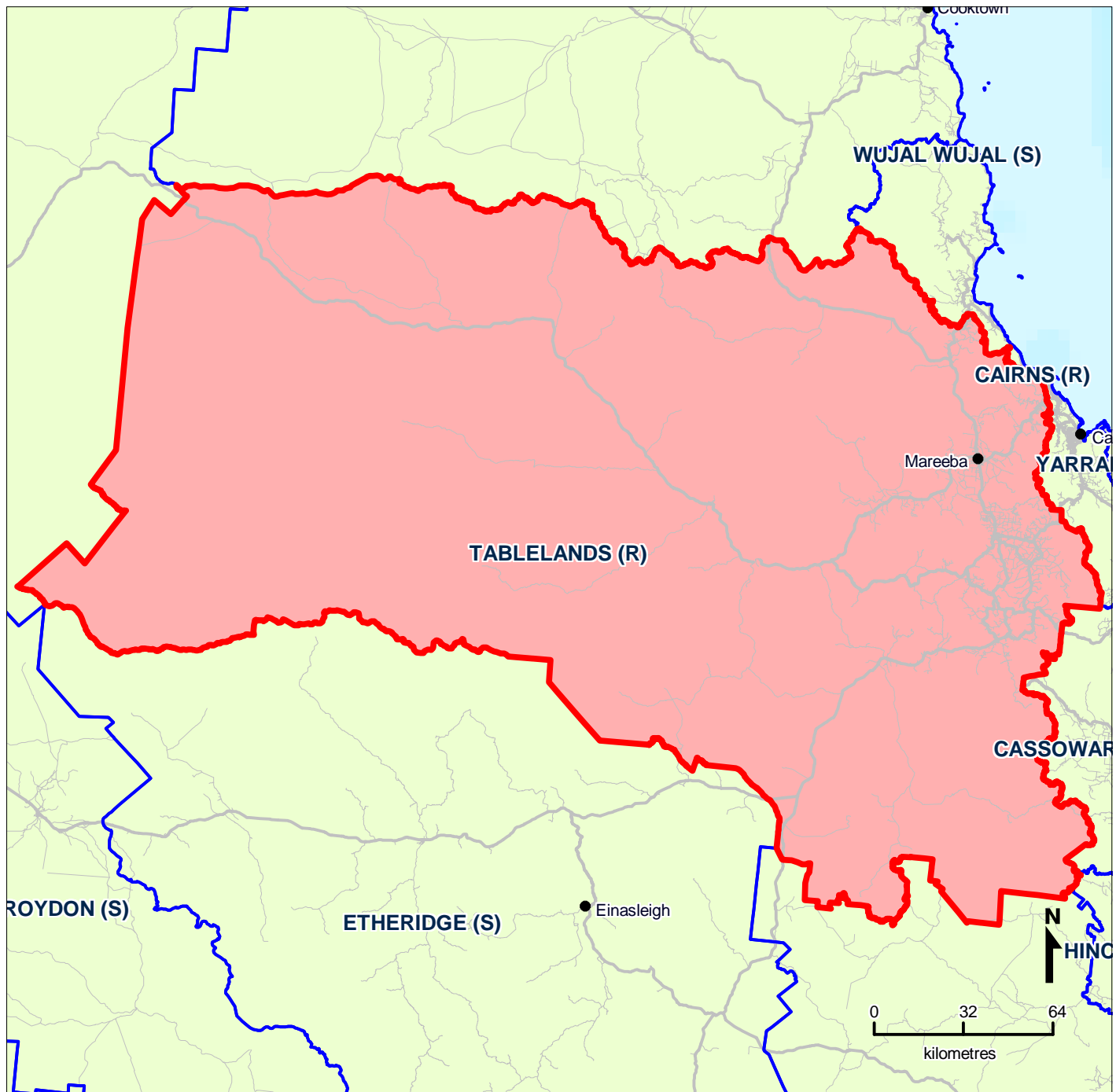


Queensland Local Government Areas (LGA), 2008 - Tablelands (R) (ASGC Code 36810)



LEGEND

- SELECTED REGION**
- LOCAL GOVERNMENT AREA BOUNDARY**
- Road Network**
- Cities/Towns**

Queensland Government
Treasury

Map produced by Office of Economic and Statistical Research, Queensland Treasury (www.oesr.qld.gov.au/maps). Data sourced from Australian Bureau of Statistics, Australian Standard Geographical Classification (ASGC), 2008 (cat. no. 1216.0) Queensland Government, State Digital Road Network (SDRN), December 2008
© The State of Queensland (Queensland Treasury) 2009