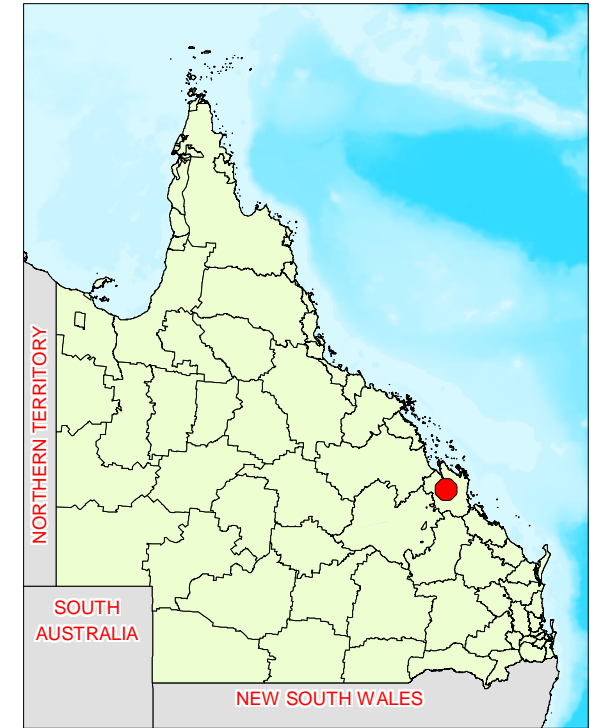
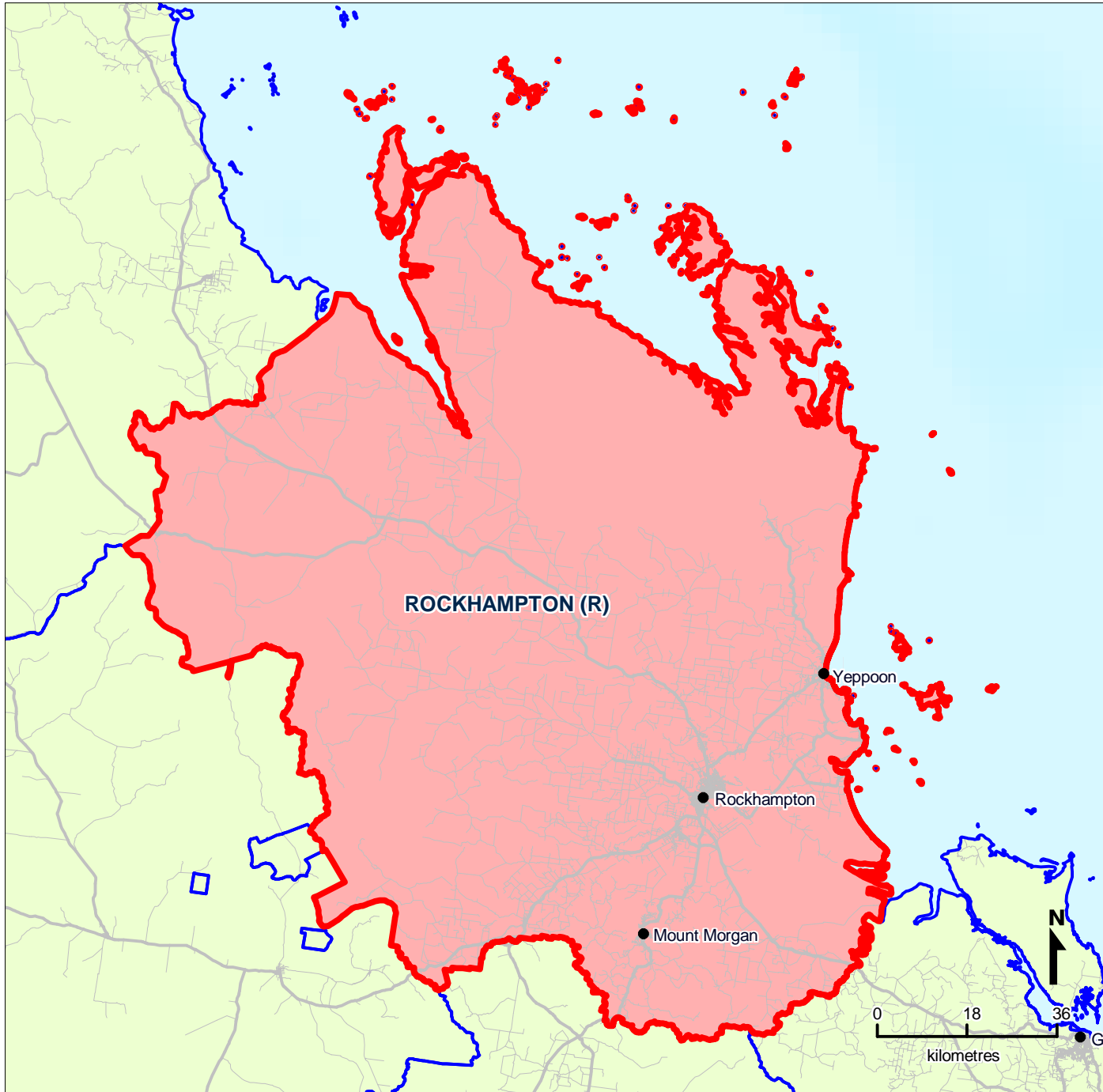


Queensland Local Government Areas (LGA), 2008 - Rockhampton (R) (ASGC Code 36360)



LEGEND

- SELECTED REGION
- LOCAL GOVERNMENT AREA BOUNDARY
- Road Network
- Cities/Towns



Queensland Government
Treasury

Map produced by Office of Economic and Statistical Research, Queensland Treasury (www.oesr.qld.gov.au/maps). Data sourced from Australian Bureau of Statistics, Australian Standard Geographical Classification (ASGC), 2008 (cat. no. 1216.0) Queensland Government, State Digital Road Network (SDRN), December 2008
© The State of Queensland (Queensland Treasury) 2009