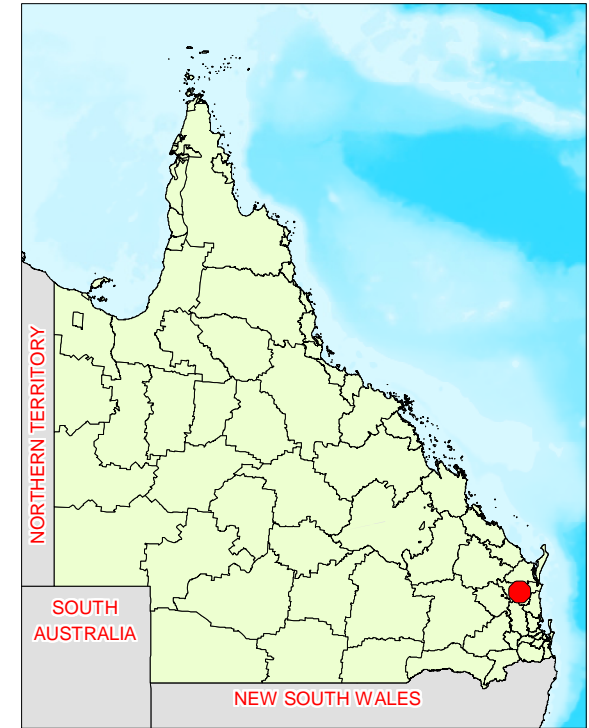
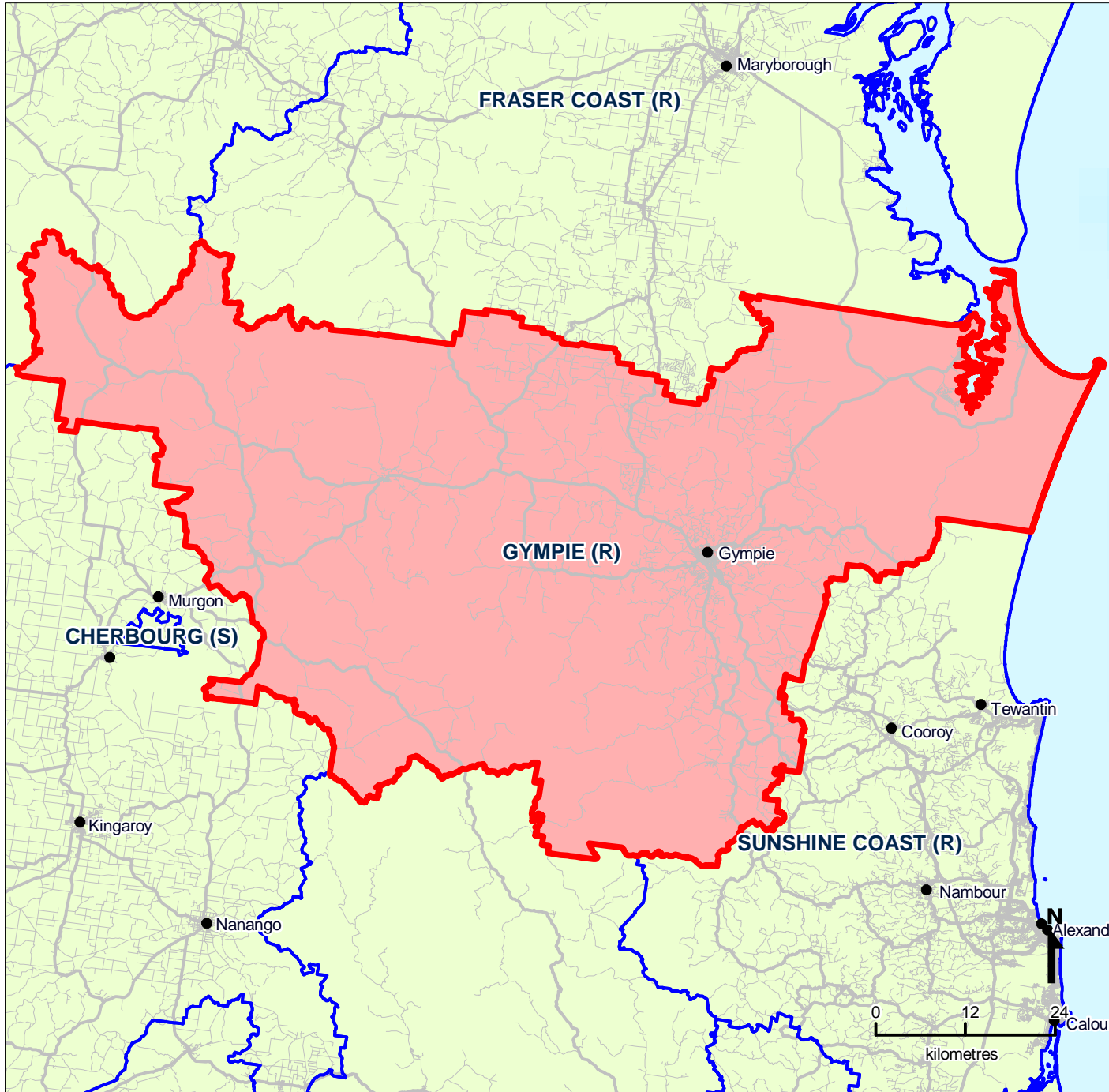


# Queensland Local Government Areas (LGA), 2008 - Gympie (R) (ASGC Code 33620)



**LEGEND**

- SELECTED REGION**
- LOCAL GOVERNMENT AREA BOUNDARY**
- Road Network**
- Cities/Towns**



**Queensland Government**  
Treasury

Map produced by Office of Economic and Statistical Research, Queensland Treasury ([www.oesr.qld.gov.au/maps](http://www.oesr.qld.gov.au/maps)). Data sourced from Australian Bureau of Statistics, Australian Standard Geographical Classification (ASGC), 2008 (cat. no. 1216.0) Queensland Government, State Digital Road Network (SDRN), December 2008  
© The State of Queensland (Queensland Treasury) 2009