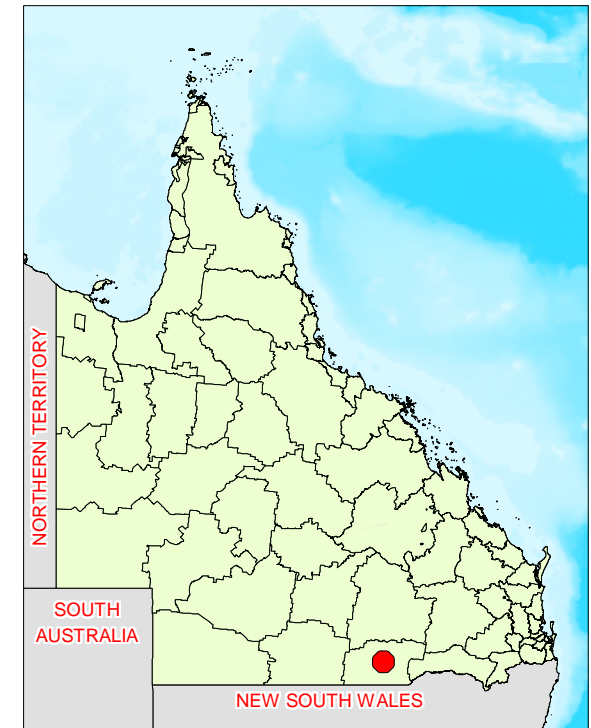
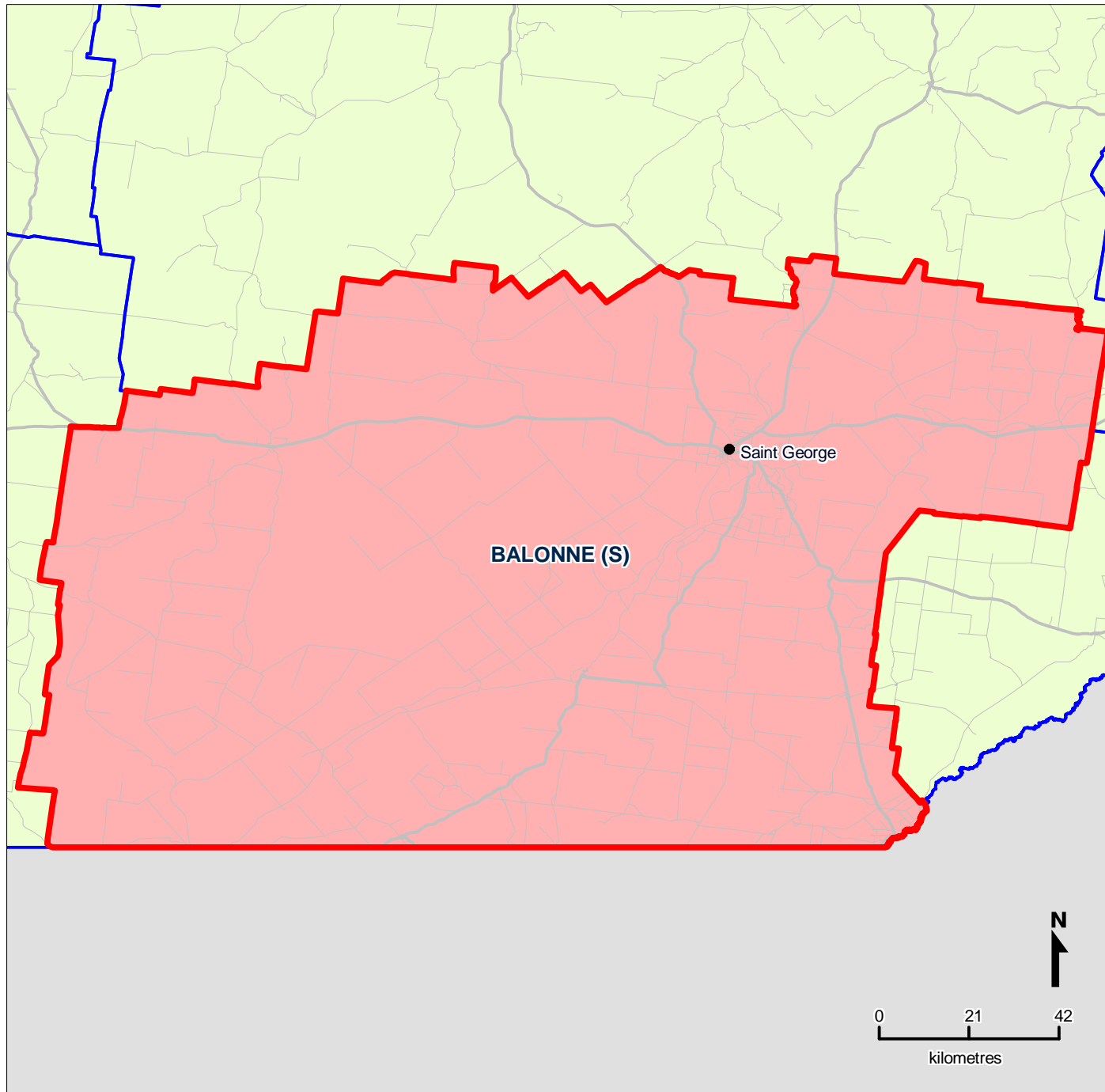


# Queensland Local Government Areas (LGA), 2008 - Balonne (S) (ASGC Code 30300)



## LEGEND

-  **SELECTED REGION**
-  **LOCAL GOVERNMENT AREA BOUNDARY**
-  **Road Network**
-  **Cities/Towns**



**Queensland Government**  
Treasury

Map produced by Office of Economic and Statistical Research, Queensland Treasury ([www.oesr.qld.gov.au/maps](http://www.oesr.qld.gov.au/maps)). Data sourced from Australian Bureau of Statistics, Australian Standard Geographical Classification (ASGC), 2008 (cat. no. 1216.0) Queensland Government, State Digital Road Network (SDRN), December 2008  
© The State of Queensland (Queensland Treasury) 2009