

Main Features

Imprisonment rate quarterly change:

Queensland	no change
Australia	↑ 0.1%

Imprisonment rate annual change:

Queensland	↓ 1.5%
Australia	↑ 2.6%

Female imprisonment rate quarterly change:

Queensland	↑ 0.4%
Australia	↑ 0.7%

Community-based corrections rate quarterly change:

Queensland	↑ 0.7%
Australia	↑ 1.2%

Commentary

In December quarter 2004:

- There were 179.7 persons in custody per 100,000 adult population in Queensland, which is unchanged from the previous quarter and 1.5% less than the rate of imprisonment 12 months earlier. The rate remains higher than the Australian rate of 154.4 persons per 100,000 (see Figure 1). Queensland had the third highest imprisonment rate of any state or territory.
- Queensland's prisons, including Work Outreach Camps and Community Custody Centres, held an average of 5,346 prisoners per day, up 26 persons per day from 5,320 in September quarter 2004 and up 54 persons per day over the year (see Figure 2). The Australian average daily number for the December quarter was 23,816 prisoners per day, an increase of 326 persons per day from the September quarter and an increase of 938 over the past year.
- The number of Aboriginal and Torres Strait Islander people in Queensland prisons was 1,300 (24.8% of the State's total adult prison population).
- Females represented 6.7% of Queensland's prison population. The number of females in prison per 100,000 adult female population increased 0.4% from the previous quarter. Across Australia, 6.7% of the prison population were women.
- In Queensland, there were 391.1 persons per 100,000 adult population in community-based corrections, down 0.7% from September quarter 2004 (see Figure 3). This remains higher than the Australian rate of 336.6 persons per 100,000 adult population. Queensland had the fourth highest rate nationally.

- Sentenced prisoners represented 79.9% of the Queensland prison population, marginally higher than the Australian rate of 79.3%.

Figure 1: Imprisonment rate

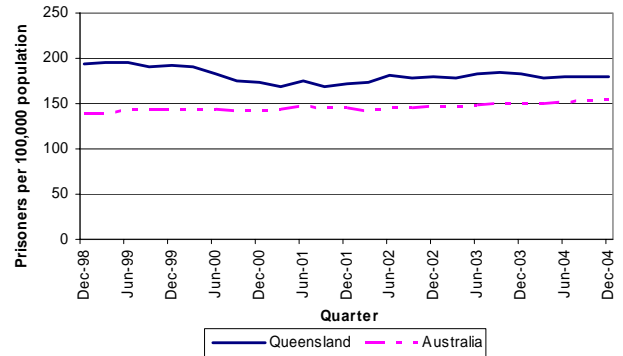


Figure 2: Prisoners in Queensland

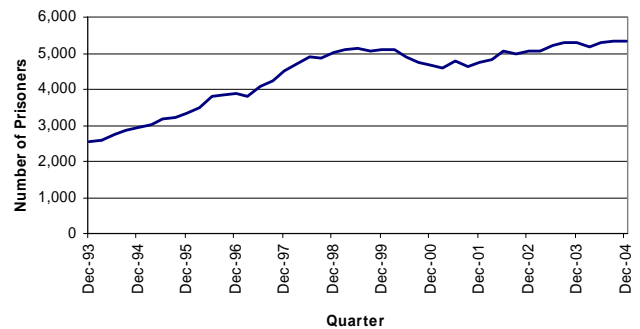
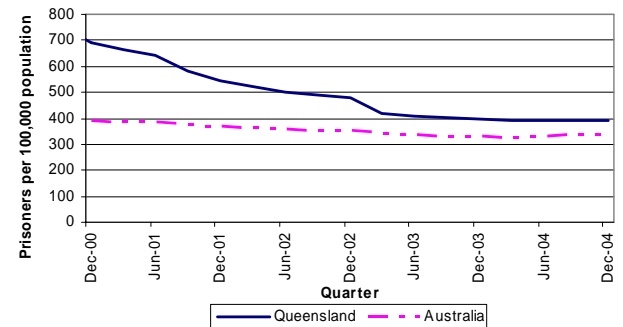


Figure 3: Community-based corrections rate



Note: Indigenous imprisonment rate data were not available for the December quarter 2004 publication.

Population figures used in calculating rates are for adults 18 years and over for all states except Queensland and Victoria which use adults aged 17 years and over.