



OFFICE OF ECONOMIC AND STATISTICAL RESEARCH

INFORMATION BRIEF

2001 CENSUS OF POPULATION AND HOUSING

FAMILY TYPE

Main Features

Proportions of different family types

	Queensland	Australia
Couple With Children	34.0%	35.4%
Couple Without Children	28.4%	26.9%
One Parent	12.2%	11.6%
Lone Person	24.0%	24.7%
Other Family	1.3%	1.4%

Percentage point change in proportion of family types from 1996 Census

	Queensland	Australia
Couple With Children	↓ 3.0%	↓ 2.5%
Couple Without Children	↑ 0.6%	↑ 0.8%
One Parent	↑ 0.9%	↑ 0.6%
Lone Person	↑ 1.5%	↑ 1.1%
Other Family	↓ 0.1%	No change

Commentary

- These counts are based on the results of the August 2001 Census of Population and Housing conducted by the Australian Bureau of Statistics. Data presented are based on the place of enumeration counts, not place of usual residence. Place of usual residence data will be available in April 2003.
- This information brief examines the types of families people were living in at the time of the 2001 census. For the purposes of this brief, people living by themselves are considered single person families. Children aged less than 15 years, dependent students and non-dependent children living in the same household as their parents are considered children for the purposes of this brief. For example, a couple living with their 25 year old child are considered a couple with children, while a couple whose children have left home are not.
- There were 1,229,451 families in Queensland on the Census night. This is an increase of 11.6% from the 1,101,503 in 1996. There was a slightly lower (7.6%) increase in the number of families in Australia, from 6,088,735 in 1996 to 6,553,041 in 2001.
- 767,503 families (62.4%) were couple families, while 445,381 (36.2%) were either sole-parent or lone-person families. In 1996, 64.8% of families were couple families and 33.8% were sole-parent or lone-person families.

- In total, 567,664 (46.2%) Queensland families had children living with them. This has decreased slightly from 48.2% in 1996. This decrease was similar for the whole of Australia, with 47.1% of families having dependents compared with 49.0% in 1996.
- There were 149,858 (12.2%) sole-parent families in Queensland. This is an increase from 124,292 (11.3%) in 1996.
- More than half (54.4%) of the couple families in Queensland had children. Of these, 302,001 (72.3%) had dependent children, 98,016 (23.5%) had dependent students and 68,122 (16.3%) had only non-dependent children.
- The number of people living by themselves has increased from 248,336 in 1996 to 295,523 in 2001. This represents an increase from 7.4% of people in 1996 to 8.1% in 2001. This is slightly less than the country as a whole, with 8.5% of people in Australia living by themselves in 2001, compared with 8.0% in 1996 (figure 1).

Figure 1: Proportion of people living alone, Queensland and Australia, 1996 – 2001.

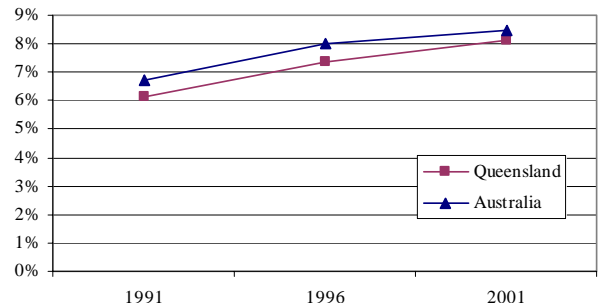


Figure 2: Family types, Queensland, 2001.

