

### Main Features

#### Preliminary estimated resident population at 30 June 2008:

Queensland	4,279,411
Australia	21,373,998
Qld share of national population	20.0%

#### Population growth (12 months to 30 June 2008):

Queensland	2.3%
Australia	1.7%
Qld share of national growth	27.3%

#### Queensland components of population increase:

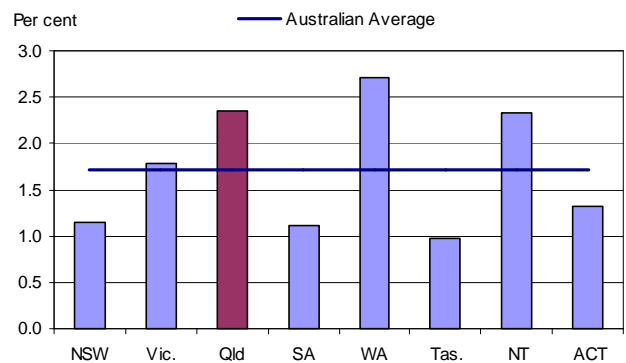
	12 mths to Jun 2008	% of growth
Natural increase	33,605	34.3
Net interstate migration	23,085	23.6
Net overseas migration	41,290	42.1
Total	97,980	100.0

### Commentary

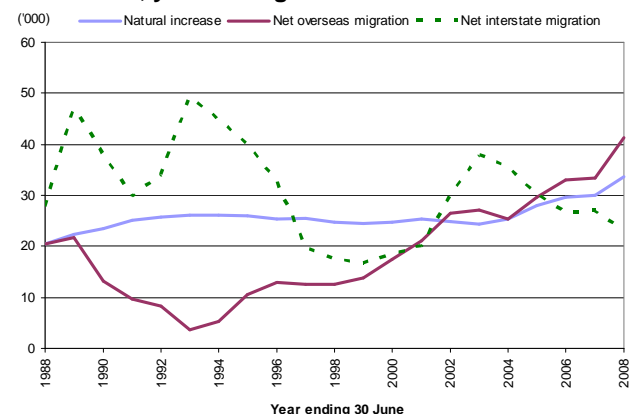
- Data reported in this brief for 30 September 2006 onwards are preliminary. Data prior to 30 September 2006 are final.
- Queensland's preliminary estimated resident population at 30 June 2008 was 4,279,411 persons. Queensland's population accounts for 20.0% of the Australian population.
- Queensland's population increased by 2.3% (97,980 persons) over the 12 months to 30 June 2008. This was higher than the growth rate for Australia (1.7%) and the second-highest growth rate for all states and territories (Figure 1).
- Net overseas migration made the largest contribution to population growth in Queensland in the 12 months to 30 June 2008 (42.1%), followed by natural increase (34.3%) and net interstate migration (23.6%) (Figure 2).
- Net overseas migration to Queensland was 41,290 persons in the year ending 30 June 2008. The figure for the latest 12-month period was the highest recorded since the introduction of the estimated resident population series by the Australian Bureau of Statistics in 1971.\*
- Natural increase (births minus deaths) in the year ending 30 June 2008 for Queensland was 33,605 persons, the highest on record since the introduction of the series by the Australian Bureau of Statistics in 1971. The growth in natural increase is largely due to the increase in the number of registered births in 2007 and 2008.

- The level of net interstate migration to Queensland continues to be the highest of all Australian states and territories. In the 12 months to 30 June 2008 net interstate migration to Queensland eased to 23,085 persons.

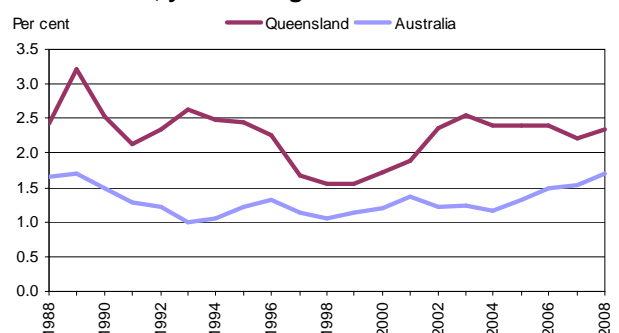
**Figure 1: Population growth rate, Australia and states and territories, year ending 30 June 2008**



**Figure 2: Population increase by component of growth, Queensland, year ending 30 June**



**Figure 3: Population annual growth rate, Queensland and Australia, year ending 30 June**



\* Net overseas migration estimates contain a break in time series from September quarter 2006 onwards, when an improved methodology was introduced.